

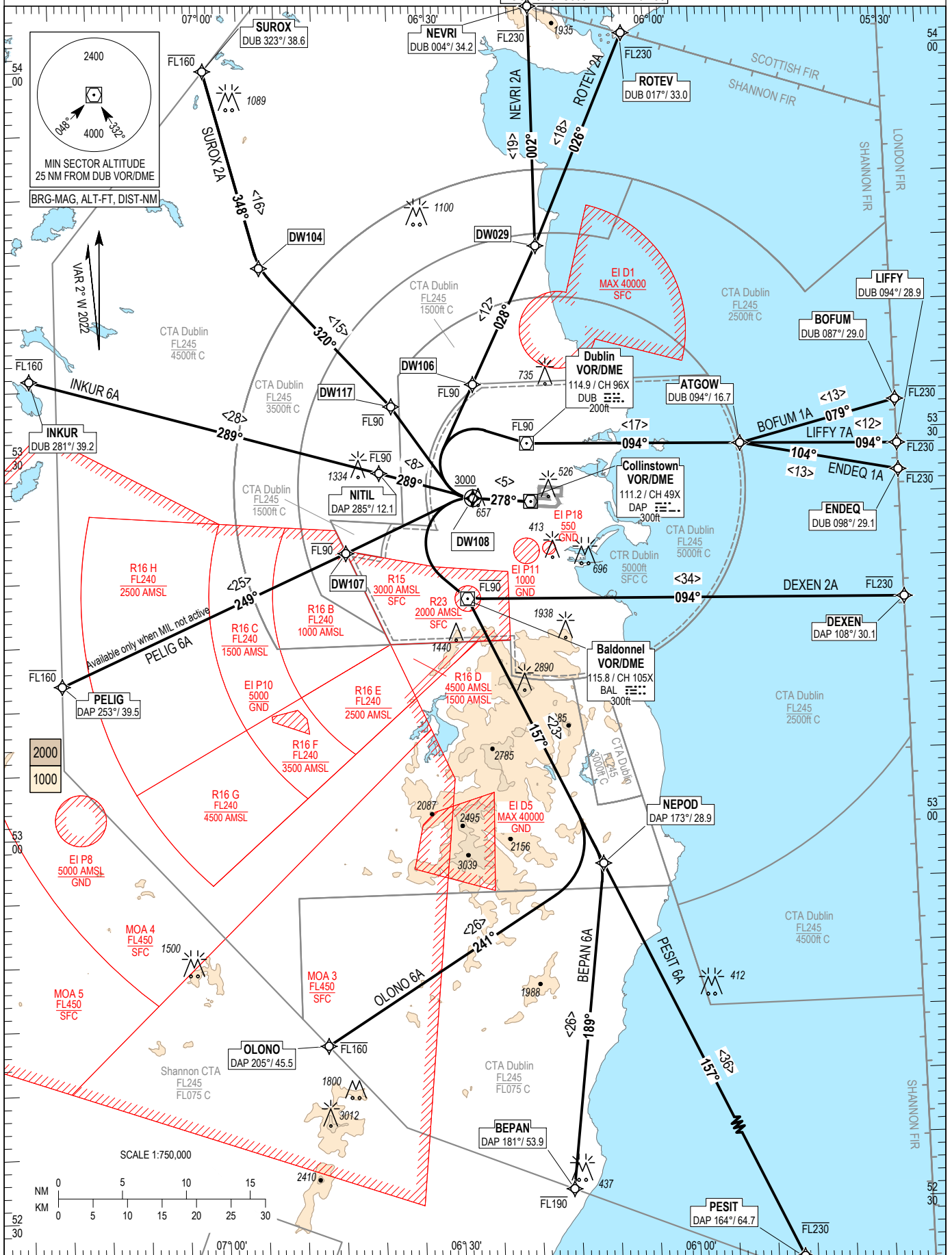
RNAV STANDARD DEPARTURE CHART
INSTRUMENT (SID) - ICAO

TRANS ALT 5000ft
TRANS LEVEL by ATC

ATIS TWR	124.530
ACC Lower North	118.600
ACC Lower South	132.580
	120.755

DUBLIN RWY 28L, CAT C, D

BOFUM 1A, LIFFY 7A, DEXEN 2A, PESIT 6A, BEPAN 6A, OLONO 6A, ENDEQ 1A, PELIG 6A, INKUR 6A, SUROX 2A, NEVRI 2A, ROTEV 2A



NOTES: 1. Climb gradient 9.1% (550 ft/NM) (4% for obstacle clearance). 2. For BOFUM, LIFFY, ENDEQ and DEXEN MAX IAS: 290kts above FL100. 3. Integrity check fix available from RADAR. 4. On passing 2000ft contact ACC Lower North or ACC Lower South as appropriate. 5. DME/DME or GNSS navigation required.

CHANGE: NITL, NEVRI, BOFUM and DEXEN grosscheck updated.

BEPAN 6A CAT C/D SID RWY28L

BEPA6A

Nav. Spec.	WPT Name	Latitude (N)/ Longitude (W)	Path Term	Fly-By Fly-over	True track / Mag track	Distance (NM)	Upper limit / Lower limit (ft)	Speed Limit (kts)	Remarks
RNAV1	DW108	532548.6 / 0062543.7	CF	Fly-Over	275.4 / 278	-	- / +A3000	-	LO
RNAV1	BAL	531759.6 / 0062652.0	DF	Fly-By	-	-	-FL90 / -	-	Turn L, VOR
RNAV1	NEPOD	525657.2 / 0061029.8	TF	Fly-By	154.8 / 157	23.3	-	-	-
RNAV1	BEPAN	523136.2 / 0061549.5	TF	Fly-By	187.3 / 189	25.6	-FL190 / -	-	Turn R

BOFUM 1A CAT C/D SID RWY28L

BOFU1A

Nav. Spec.	WPT Name	Latitude (N)/ Longitude (W)	Path Term	Fly-By Fly-over	True track / Mag track	Distance (NM)	Upper limit / Lower limit (ft)	Speed Limit (kts)	Remarks
RNAV1	DW108	532548.6 / 0062543.7	CF	Fly-Over	275.4 / 278	-	- / +A3000	-	LO
RNAV1	DUB	532957.8 / 0061825.6	DF	Fly-By	-	-	-FL90 / -	-	Turn R, VOR
RNAV1	ATGOW	532920.2 / 0055032.5	TF	Fly-By	092.0 / 094	16.7	-	-	-
RNAV1	BOFUM	533214.0 / 0053000.0	TF	Fly-By	076.6 / 079	12.6	-FL230 / -	290	Turn L

DEXEN 2A CAT C/D SID RWY28L

DEXE2A

Nav. Spec.	WPT Name	Latitude (N)/ Longitude (W)	Path Term	Fly-By Fly-over	True track / Mag track	Distance (NM)	Upper limit / Lower limit (ft)	Speed Limit (kts)	Remarks
RNAV1	DW108	532548.6 / 0062543.7	CF	Fly-Over	275.4 / 278	-	- / +A3000	-	LO
RNAV1	BAL	531759.6 / 0062652.0	DF	Fly-By	-	-	-FL90 / -	-	Turn L
RNAV1	DEXEN	531649.4 / 0053000.0	TF	Fly-By	091.6 / 094	34.1	-FL230 / -	290	-

ENDEQ 1A CAT C/D SID RWY28L

ENDE1A

Nav. Spec.	WPT Name	Latitude (N)/ Longitude (W)	Path Term	Fly-By Fly-over	True track / Mag track	Distance (NM)	Upper limit / Lower limit (ft)	Speed Limit (kts)	Remarks
RNAV1	DW108	532548.6 / 0062543.7	CF	Fly-Over	275.4 / 278	-	- / +A3000	-	LO
RNAV1	DUB	532957.8 / 0061825.6	DF	Fly-By	-	-	-FL90 / -	-	Turn R, VOR
RNAV1	ATGOW	532920.2 / 0055032.5	TF	Fly-By	092.0 / 094	16.7	-	-	-
RNAV1	ENDEQ	532644.4 / 0053000.0	TF	Fly-By	101.8 / 104	12.5	-FL230 / -	290	Turn R

INKUR 6A CAT C/D SID RWY28L

INKU6A

Nav. Spec.	WPT Name	Latitude (N)/ Longitude (W)	Path Term	Fly-By Fly-over	True track / Mag track	Distance (NM)	Upper limit / Lower limit (ft)	Speed Limit (kts)	Remarks
RNAV1	DW108	532548.6 / 0062543.7	CF	Fly-Over	275.4 / 278	-	- / + A3000	-	LO
RNAV1	NITIL	532800.0 / 0063755.0	TF	Fly-By	286.8 / 289	7.6	-FL90 / -	-	Turn R
RNAV1	INKUR	533551.3 / 0072328.6	TF	Fly-By	286.4 / 289	28.3	-FL160 / -	-	-

LIFFY 7A CAT C/D SID RWY28L

LIFF7A

Nav. Spec.	WPT Name	Latitude (N)/ Longitude (W)	Path Term	Fly-By Fly-over	True track / Mag track	Distance (NM)	Upper limit / Lower limit (ft)	Speed Limit (kts)	Remarks
RNAV1	DW108	532548.6 / 0062543.7	CF	Fly-Over	275.4 / 278	-	- / +A3000	-	LO
RNAV1	DUB	532957.8 / 0061825.6	DF	Fly-By	-	-	-FL90 / -	-	Turn R, VOR
RNAV1	ATGOW	532920.2 / 0055032.5	TF	Fly-By	092.0 / 094	16.7	-	-	-
RNAV1	LIFFY	532848.3 / 0053000.0	TF	Fly-By	092.3 / 094	12.3	-FL230 / -	290	-

NEVRI 2A CAT C/D SID RWY28L

NEVR2A

Nav. Spec.	WPT Name	Latitude (N)/ Longitude (W)	Path Term	Fly-By Fly-over	True track / Mag track	Distance (NM)	Upper limit / Lower limit (ft)	Speed Limit (kts)	Remarks
RNAV1	DW108	532548.6 / 0062543.7	CF	Fly-Over	275.4 / 278	-	- / + A3000	-	LO
RNAV1	DW106	533441.8 / 0062515.3	DF	Fly-By	-	-	-FL90 / -	-	Turn R
RNAV1	DW029	534521.0 / 0061621.0	TF	Fly-By	026.3 / 028	11.9	-	-	-
RNAV1	NEVRI	540406.0 / 0061611.4	TF	Fly-By	000.3 / 002	18.8	-FL230 / -	-	Turn L

OLONO 6A CAT C/D SID RWY28L

OLON6A

Nav. Spec.	WPT Name	Latitude (N)/ Longitude (W)	Path Term	Fly-By Fly-over	True track / Mag track	Distance (NM)	Upper limit / Lower limit (ft)	Speed Limit (kts)	Remarks
RNAV1	DW108	532548.6 / 0062543.7	CF	Fly-Over	275.4 / 278	-	- / +A3000	-	LO
RNAV1	BAL	531759.6 / 0062652.0	DF	Fly-By	-	-	-FL90 / -	-	Turn L, VOR
RNAV1	NEPOD	525657.2 / 0061029.8	TF	Fly-By	154.8 / 157	23.3	-	-	-
RNAV1	OLONO	524323.1 / 0064644.4	TF	Fly-By	238.5 / 241	25.8	-FL160 / -	-	Turn R

PELIG 6A CAT C/D SID RWY28L

PELI6A

Nav. Spec.	WPT Name	Latitude (N)/ Longitude (W)	Path Term	Fly-By Fly-over	True track / Mag track	Distance (NM)	Upper limit / Lower limit (ft)	Speed Limit (kts)	Remarks
RNAV1	DW108	532548.6 / 0062543.7	CF	Fly-Over	275.4 / 278	-	- / +A3000	-	LO
RNAV1	DW107	532149.4 / 0064234.4	DF	Fly-By	-	-	-FL90 / -	-	Turn L
RNAV1	PELIG	531158.5 / 0072000.0	TF	Fly-By	246.5 / 249	24.5	-FL160 / -	-	-

PESIT 6A CAT C/D SID RWY28L

PESI6A

Nav. Spec.	WPT Name	Latitude (N)/ Longitude (W)	Path Term	Fly-By Fly-over	True track / Mag track	Distance (NM)	Upper limit / Lower limit (ft)	Speed Limit (kts)	Remarks
RNAV1	DW108	532548.6 / 0062543.7	CF	Fly-Over	275.4 / 278	-	- / +A3000	-	LO
RNAV1	BAL	531759.6 / 0062652.0	DF	Fly-By	-	-	-FL90 / -	-	Turn L, VOR
RNAV1	NEPOD	525657.2 / 0061029.8	TF	Fly-By	154.8 / 157	23.3	-	-	-
RNAV1	PESIT	522356.6 / 0054524.0	TF	Fly-By	155.0 / 157	36.4	-FL230 / -	-	-

ROTEV 2A CAT C/D SID RWY28L

ROTE2A

Nav. Spec.	WPT Name	Latitude (N)/ Longitude (W)	Path Term	Fly-By Fly-over	True track / Mag track	Distance (NM)	Upper limit / Lower limit (ft)	Speed Limit (kts)	Remarks
RNAV1	DW108	532548.6 / 0062543.7	CF	Fly-Over	275.4 / 278	-	- / +A3000	-	LO
RNAV1	DW106	533441.8 / 0062515.3	DF	Fly-By	-	-	-FL90 / -	-	Turn R
RNAV1	DW029	534521.0 / 0061621.0	TF	Fly-By	026.3 / 028	11.9	-	-	-
RNAV1	ROTEV	540143.7 / 0060358.4	TF	Fly-By	024.0 / 026	18.0	-FL230 / -	-	-

SUROX 2A CAT C/D SID RWY28L

SURO2A

Nav. Spec.	WPT Name	Latitude (N)/ Longitude (W)	Path Term	Fly-By Fly-over	True track / Mag track	Distance (NM)	Upper limit / Lower limit (ft)	Speed Limit (kts)	Remarks
RNAV1	DW108	532548.6 / 0062543.7	CF	Fly-Over	275.4 / 278	-	- / +A3000	-	LO
RNAV1	DW117	533310.5 / 0063604.4	DF	Fly-By	-	-	-FL90 / -	-	Turn R
RNAV1	DW104	534417.9 / 0065252.9	TF	Fly-By	318.2 / 320	15.0	-	-	-
RNAV1	SUROX	535948.0 / 0065936.5	TF	Fly-By	345.7 / 348	16.0	-FL160 / -	-	Turn R