

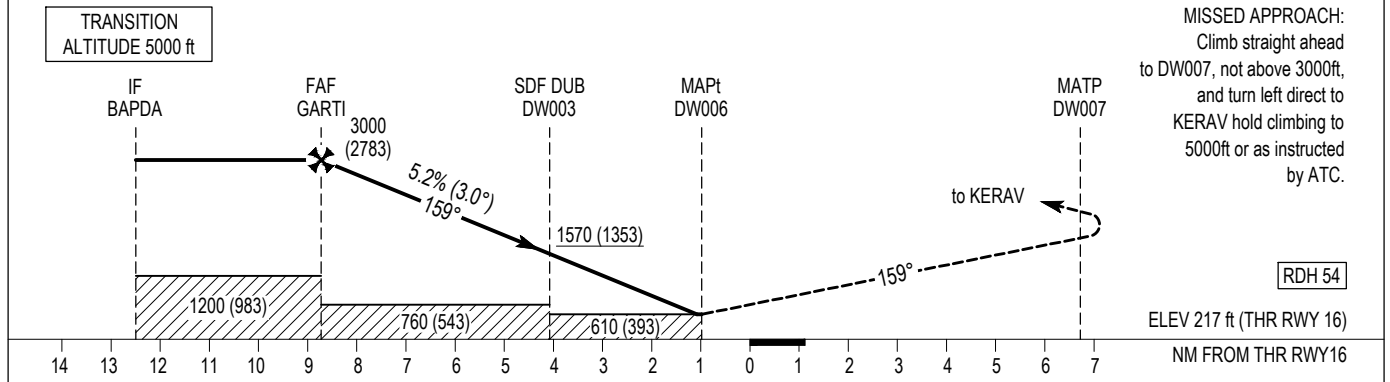
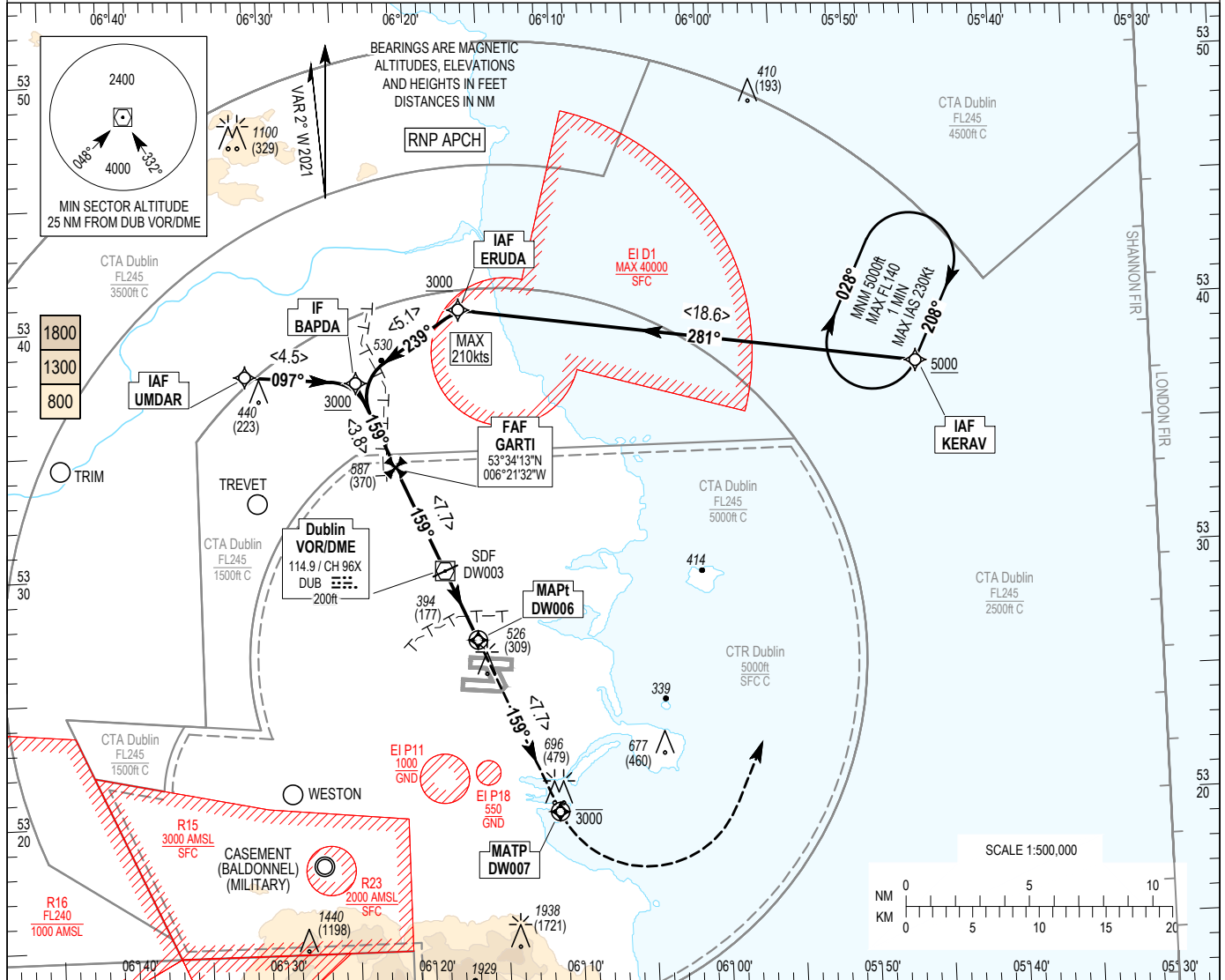
INSTRUMENT
APPROACH
CHART- ICAO

AERODROME ELEV 242 ft
HEIGHTS RELATED TO
THR RWY 16 - ELEV 217 ft

TWR	118.600
FINALS	119.930
GND	121.800
ATIS	124.530
APP	121.100

SBAS
CH 44282
E16A

DUBLIN/DUBLIN
RNP RWY 16
(ACFT CAT A, B, C, D)
MNM TEMP -10°C (BARO VNAV)
MAX TEMP 50°C (BARO VNAV)



OCA (H)	A	B	C	D
	1200 (983)	760 (543)	610 (393)	
LNAV	610 (393)			
LNAV / VNAV	660 (443)	670 (453)	680 (463)	690 (473)
LPV	414 (197)	423 (206)	433 (216)	442 (225)
Visual Manoeuvring (Heights AAL)	830 (588)		1100 (858)	

NOTE:
1. Pilots should request RNP Approach on first contact with APCH.
2. See EIDW AD 2.24-38.2 for SBAS FAS Data Block Coding Data.

Recommended Profile on Final Approach							
DIST THR RWY 16 (NM)	8	7	6	5	4	3	2
ALT / HT (ft)	2820 (2603)	2500 (2283)	2180 (1963)	1865 (1648)	1545 (1328)	1225 (1008)	910 (693)
Ground Speed	fts	80	100	110	120	140	160
Descent rate gradient - 5.2% (3.0°) 318 ft/NM	ft / min	425	530	580	635	745	850

CHANGE: New chart.

Dublin RNP RWY 16 via KERAV

Nav. Spec.	WPT Name	Latitude (N) / Longitude (W)	Path Term	Fly-By Fly-over	True track / Mag track	Distance (NM)	Upper limit / Lower limit	Speed Limit (kts)	VPA (°) / TCH (ft)	Remarks
RNP APCH	KERAV	533742.7 / 0054557.3	IF	Fly-By	-	-	- / A5000	-	-	-
RNP APCH	ERUDA	534029.0 / 0061655.0	TF	Fly-By	278.8 / 281	18.6	- / A3000	210	-	-
RNP APCH	BAPDA	533740.0 / 0062403.7	TF	Fly-By	236.5 / 239	5.1	- / A3000	210	-	L
RNP APCH	GARTI	533412.8 / 0062132.1	TF	Fly-By	156.5 / 159	3.8	A3000 / A3000	-	-	L
RNP APCH	DW003	532957.7 / 0061825.6	TF	Fly-By	156.4 / 159	4.6	-	-	-	-
RNP APCH	DW006	532707.3 / 0061622.4	TF	Fly-Over	156.7 / 159	3.1	-	-	3.00 / -	-
RNP APCH	DW007	532003.5 / 0061115.7	CF	Fly-Over	156.6 / 159	-	A3000 / -	-	-	159° DUB / D10.8 DUB
RNP APCH	KERAV	533742.7 / 0054557.3	DF	Fly-By	-	-	- / A5000	-	-	L

Dublin RNP RWY 16 via BAPDA

Nav. Spec.	WPT Name	Latitude (N) / Longitude (W)	Path Term	Fly-By Fly-over	True track / Mag track	Distance (NM)	Upper limit / Lower limit	Speed Limit (kts)	VPA (°) / TCH (ft)	Remarks
RNP APCH	BAPDA	533740.0 / 0062403.7	IF	Fly-By	-	-	- / A3000	210	-	-
RNP APCH	GARTI	533412.8 / 0062132.1	TF	Fly-By	156.5 / 159	3.8	A3000 / A3000	-	-	-
RNP APCH	DW003	532957.7 / 0061825.6	TF	Fly-By	156.4 / 159	4.6	-	-	-	-
RNP APCH	DW006	532707.3 / 0061622.4	TF	Fly-Over	156.7 / 159	3.1	-	-	3.00 / -	-
RNP APCH	DW007	532003.5 / 0061115.7	CF	Fly-Over	156.6 / 159	-	A3000 / -	-	-	159° DUB / D10.8 DUB
RNP APCH	KERAV	533742.7 / 0054557.3	DF	Fly-By	-	-	- / A5000	-	-	L

Dublin RNP RWY 16 via UMDAR

Nav. Spec.	WPT Name	Latitude (N) / Longitude (W)	Path Term	Fly-By Fly-over	True track / Mag track	Distance (NM)	Upper limit / Lower limit	Speed Limit (kts)	VPA (°) / TCH (ft)	Remarks
RNP APCH	UMDAR	533803.3 / 0063135.5	IF	Fly-By	-	-	-	-	-	-
RNP APCH	BAPDA	533740.0 / 0062403.7	TF	Fly-By	094.9 / 097	4.5	- / A3000	210	-	-
RNP APCH	GARTI	533412.8 / 0062132.1	TF	Fly-By	156.5 / 159	3.8	A3000 / A3000	-	-	R
RNP APCH	DW003	532957.7 / 0061825.6	TF	Fly-By	156.4 / 159	4.6	-	-	-	-
RNP APCH	DW006	532707.3 / 0061622.4	TF	Fly-Over	156.7 / 159	3.1	-	-	3.00 / -	-
RNP APCH	DW007	532003.5 / 0061115.7	CF	Fly-Over	156.6 / 159	-	A3000 / -	-	-	159° DUB / D10.8 DUB
RNP APCH	KERAV	533742.7 / 0054557.3	DF	Fly-By	-	-	- / A5000	-	-	L

Hold Identification - KERAV

Holding Fix	Latitude (N) / Longitude (W)	Inbound True Track (degrees)	Inbound Mag Track (degrees)	Maximum Indicated Airspeed (kts)	Minimum Holding Level / Altitude (FL/ft)	Maximum Holding Level / Altitude (FL/ft)	Outbound time (min)	Direction of Turn
KERAV	533742.7 / 0054557.3	205.6	208	230	A5000	FL140	1	R

**SBAS FAS Data Block Coding Data
Dublin RNP RWY 16 (LPV200)**

Input Data	
Operation Type	0
Service Provider	1
Airport Identifier	EIDW
Runway	16
Runway Direction	0
Approach Performance Designator	0
Route Indicator	
Reference Path Data Selector	0
Reference Path Identifier	E16A
LTP / FTP Latitude	532613.1570N
LTP / FTP Longitude	0061543.1210W
LTP / FTP Ellipsoidal Height	122.6 m
FPAP Latitude	532511.6625N
Delta FPAP Latitude	-61.4945 seconds
FPAP Longitude	0061458.5430W
Delta FPAP Longitude	44.5780 seconds
Threshold Crossing Height	54 ft
Glidepath Angle	3 °
Course Width	108.5 m
Length Offset	0 m
HAL	40 m
VAL	35 m
Output Data	
Data Block	10 17 04 09 05 10 00 00 01 36 31 05 4A C3 EE 16 DE 09 50 FD CA 18 93 1F FE 44 5C 01 1C 02 2C 01 72 00 C8 AF 6C 3D 23 2B
Calculated CRC Value	6C3D232B
Required Additional Data (not CRC wrapped)	
ICAO Code	EI
LTP/FTP Orthometric Height	66.1 m
SBAS EGNOS Channel	44282