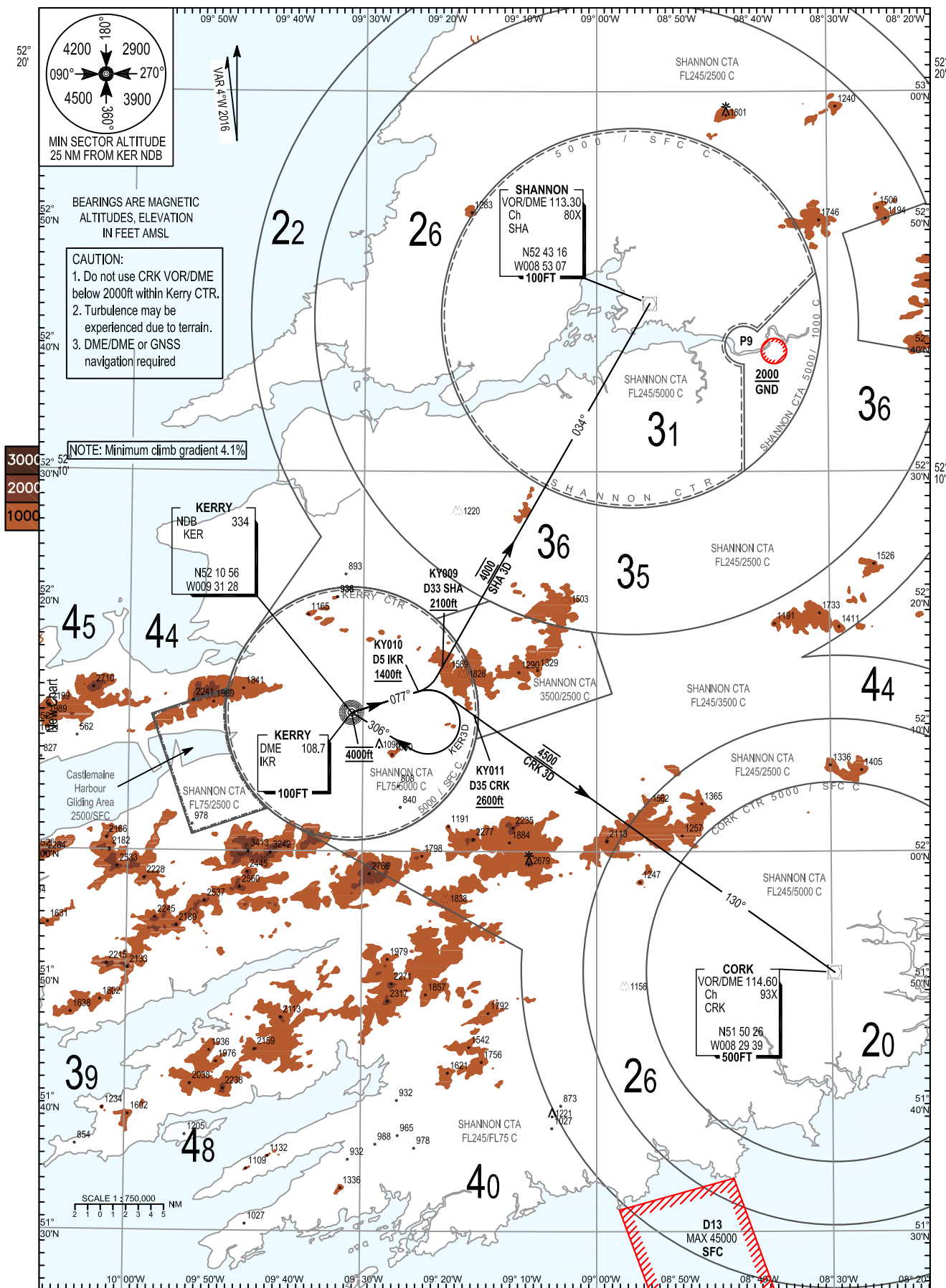


AIP IRELAND
STANDARD DEPARTURE CHART
INSTRUMENT (SID) ICAO

TRANS ALT 5000FT
TRANS LEVEL by ATC

Kerry TWR	123.325
Kerry GND	121.600
Shannon Control	124.700
ATIS	118.025

KERRY RWY 08
CAT C
SHA 3D, CRK 3D, KER 3D



CHANGE: Caution Note 3 added

SHA 3D CAT C SID RWY 08

SHA3D

Navigation Performance	Path Terminator	WPT Name	Latitude (N), Longitude (W)	Fly-By or Fly-over	Distance (NM)	True Track/ Magnetic Track	Upper limit/ Lower Limit	Speed Limit (kts)	Remarks
RNAV1	CF	RWY08	-	-	-	072.2/ 077	-	-	-
RNAV1	CF	KY010	521237.1/ 0092253.2	Fly-Over	5.0	072.2/ 077	-4000/ +1400	-	-
RNAV1	CF	KY009	521436.9/ 0091947.8	Fly-By	1.0	029.4/ 034	-4000/ +2100	-	L
RNAV1	TF	SHA	524315.6/ 0085306.8	Fly-By	33.0	029.5/ 034	4000	-	-

CRK 3D CAT C SID RWY 08

CRK3D

Navigation Performance	Path Terminator	WPT Name	Latitude (N), Longitude (W)	Fly-By or Fly-over	Distance (NM)	True Track/ Magnetic Track	Upper limit/ Lower Limit	Speed Limit (kts)	Remarks
RNAV1	CF	RWY08	-	-	-	072.2/ 077	-	-	-
RNAV1	CF	KY010	521237.1/ 0092253.2	Fly-Over	5.0	072.2/ 077	-4500/ +1400	-	-
RNAV1	CF	KY011	521045.0/ 0091545.1	Fly-By	2.7	125.2/ 130	-4500/ +2600	-	R
RNAV1	TF	CRK	515026.2/ 0082939.4	Fly-By	35.0	125.2/ 130	4500	-	-

KER 3D CAT C SID RWY 08

KER3D

Navigation Performance	Path Terminator	WPT Name	Latitude (N), Longitude (W)	Fly-By or Fly-over	Distance (NM)	True Track/ Magnetic Track	Upper limit/ Lower Limit	Speed Limit (kts)	Remarks
RNAV1	CF	RWY08	-	-	-	072.2/ 077	-	-	-
RNAV1	CF	KY010	521237.1/ 0092253.2	Fly-Over	5.0	072.2/ 077	-4000/ +1400	-	-
RNAV1	CF	KER	521055.8/ 0093128.2	Fly-By	5.5	301.2/ 306	4000	-	R