

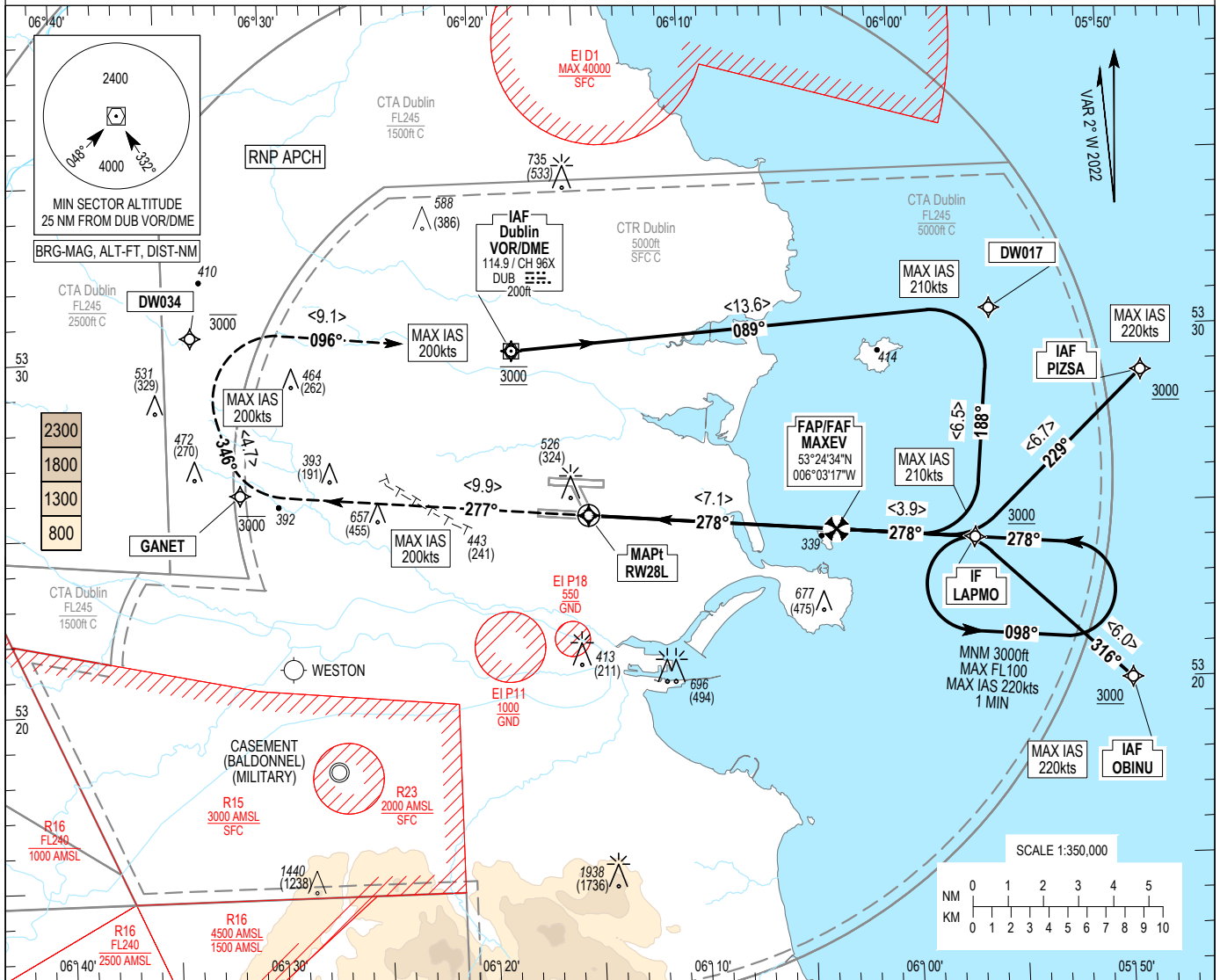
INSTRUMENT APPROACH CHART- ICAO

AERODROME ELEV 242 ft
HEIGHTS RELATED TO THR RWY 28L - ELEV 202 ft

ATIS ARR 124.530
APP 121.100
FINALS 119.930
TWR STH 118.600
GND STH 121.800

SBAS
CH 59277
E28A

DUBLIN/DUBLIN
RNP RWY 28L
MNM TEMP -10°C (BARO VNAV)
MAX TEMP 50°C (BARO VNAV)

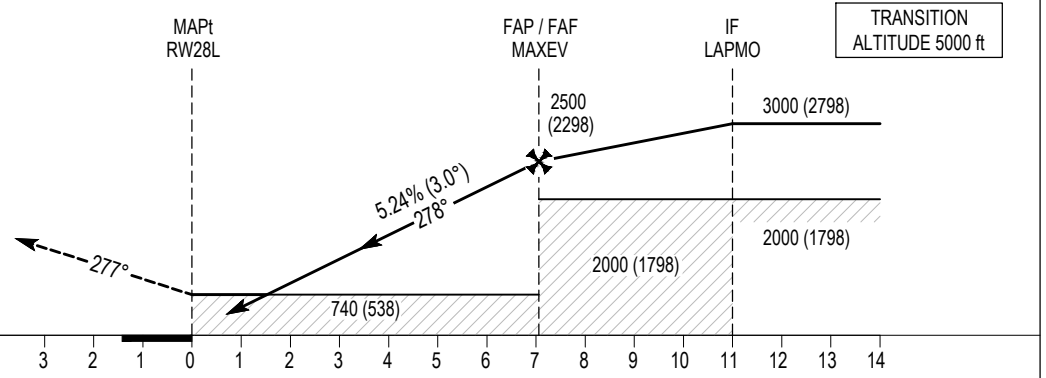


MISSED APPROACH:
Climb straight ahead to GANET, at or below 3000ft, right turn to DW034 and then proceed to DUB VOR/DME (MAX IAS 200kts) to initiate another approach or as instructed by ATC.

RDH 54

ELEV 202 ft (THR RWY 28L)

NM FROM THR RWY 28L



NOTE:

1. Pilots should request RNP Approach on first contact with APCH.
2. See EIDW AD 2.24-22.2 for SBAS FAS Data Block Coding Data.
3. Motorway running almost parallel with RWY 10R/28L, 0.6NM to South of RWY.

Recommended Profile on Final Approach

DIST THR RWY 28L (NM)	2	3	4	5	6	7
ALT / HT (ft)	895 (693)	1210 (1008)	1530 (1328)	1850 (1648)	2165 (1963)	2485 (2283)
Ground Speed	kts	80	100	110	120	140
Descent rate gradient - 5.24% (3.0°) 318 ft/NM	ft / min	430	530	580	640	850

CHANGE: Initial and Intermediate phase MOC and Final App track amended, Frequencies, Notes, Speed restriction added.

Dublin RNP RWY 28L via DUB

Nav. Spec.	WPT Name	Latitude (N) / Longitude (W)	Path Term	Fly-By Fly-Over	True track / Mag track	Distance (NM)	Upper limit / Lower limit (ft)	Speed limit (kts)	VPA (°) / TCH (ft)	Remarks
RNP APCH	DUB	532957.8 / 0061825.6	IF	-	-	-	A3000 / A3000	-	-	-
RNP APCH	DW017	533039.7 / 0055538.6	TF	Fly-By	086.9 / 089	13.6	-	210	-	-
RNP APCH	LAPMO	532411.0 / 0055644.1	TF	Fly-By	185.7 / 188	6.5	- / +A3000	210	-	Turn R
RNP APCH	MAXEV	532433.5 / 0060317.3	TF	Fly-By	275.5 / 278	3.9	-	-	-	Turn R
RNP APCH	RW28L	532512.9 / 0061502.1	TF	Fly-Over	275.4 / 278	7.1	-	-	3 / 54	-
RNP APCH	GANET	532606.5 / 0063133.8	TF	Fly-By	275.3 / 277	9.9	-A3000 / -	200	-	-
RNP APCH	DW034	533037.4 / 0063342.6	TF	Fly-By	344.2 / 346	4.7	-A3000 / -	200	-	Turn R
RNP APCH	DUB	532957.8 / 0061825.6	TF	Fly-By	094.0 / 096	9.1	A3000 / A3000	200	-	Turn R

Dublin RNP RWY 28L via PIZSA

Nav. Spec.	WPT Name	Latitude (N) / Longitude (W)	Path Term	Fly-By Fly-Over	True track / Mag track	Distance (NM)	Upper limit / Lower limit (ft)	Speed limit (kts)	VPA (°) / TCH (ft)	Remarks
RNP APCH	PIZSA	532844.3 / 0054833.6	IF	-	-	-	- / +A3000	-	-	-
RNP APCH	LAPMO	532411.0 / 0055644.1	TF	Fly-By	227.0 / 229	6.7	- / +A3000	220	-	-
RNP APCH	MAXEV	532433.5 / 0060317.3	TF	Fly-By	275.5 / 278	3.9	-	-	-	Turn R
RNP APCH	RW28L	532512.9 / 0061502.1	TF	Fly-Over	275.4 / 278	7.1	-	-	3 / 54	-
RNP APCH	GANET	532606.5 / 0063133.8	TF	Fly-By	275.3 / 277	9.9	-A3000 / -	200	-	-
RNP APCH	DW034	533037.4 / 0063342.6	TF	Fly-By	344.2 / 346	4.7	-A3000 / -	200	-	Turn R
RNP APCH	DUB	532957.8 / 0061825.6	TF	Fly-By	094.0 / 096	9.1	A3000 / A3000	200	-	Turn R

Dublin RNP RWY 28L via OBINU

Nav. Spec.	WPT Name	Latitude (N) / Longitude (W)	Path Term	Fly-By Fly-Over	True track / Mag track	Distance (NM)	Upper limit / Lower limit (ft)	Speed limit (kts)	VPA (°) / TCH (ft)	Remarks
RNP APCH	OBINU	532001.7 / 0054931.2	IF	-	-	-	- / +A3000	-	-	-
RNP APCH	LAPMO	532411.0 / 0055644.1	TF	Fly-By	314.0 / 316	6.0	- / +A3000	220	-	-
RNP APCH	MAXEV	532433.5 / 0060317.3	TF	Fly-By	275.5 / 278	3.9	-	-	-	Turn L
RNP APCH	RW28L	532512.9 / 0061502.1	TF	Fly-Over	275.4 / 278	7.1	-	-	3 / 54	-
RNP APCH	GANET	532606.5 / 0063133.8	TF	Fly-By	275.3 / 277	9.9	-A3000 / -	200	-	-
RNP APCH	DW034	533037.4 / 0063342.6	TF	Fly-By	344.2 / 346	4.7	-A3000 / -	200	-	Turn R
RNP APCH	DUB	532957.8 / 0061825.6	TF	Fly-By	094.0 / 096	9.1	A3000 / A3000	200	-	Turn R

Hold Identification - LAPMO

Holding Fix	Latitude (N) / Longitude (W)	Inbound True Track (degrees)	Inbound Mag Track (degrees)	Maximum Indicated Airspeed (kts)	Minimum Holding Level / Altitude (FL/ft)	Maximum Holding Level / Altitude (FL/ft)	Outbound time (min)	Direction of Turn
LAPMO	532411.0 / 0055644.1	275.6	278	220	+A3000	-FL100	1	L

Note: Hold is contingency only & will only be used when directed by ATC

SBAS FAS Data Block Coding Data
Dublin RNP RWY 28L

Input Data	
Operation Type	0
Service Provider	1
Airport Identifier	EIDW
Runway	28
Runway Letter	3 (L)
Approach Performance Designator	0
Route Indicator	
Reference Path Data Selector	0
Reference Path Identifier	E28A
LTP / FTP Latitude	532512.9375N
LTP / FTP Longitude	0061502.0820W
LTP / FTP Ellipsoidal Height	117.1 m
FPAP Latitude	532520.8950N
Delta FPAP Latitude	7.9575 seconds
FPAP Longitude	0061727.2535W
Delta FPAP Longitude	-145.1715 seconds
Threshold Crossing Height	54
TCH Units Selector	0
Glidepath Angle	3 °
Course Width	106.5 m
Length Offset	56 m
HAL	40 m
VAL	35 m

Output Data	
Data Block	10 17 04 09 05 DC 00 00 01 38 32 05 D3 EC EC 16 7C 4A 51 FD 93 18 2B 3E 00 D9 91 FB 1C 02 2C 01 6A 07 C8 AF C6 DC 09 C1
Calculated CRC Value	C6DC09C1

Required Additional Data (not CRC wrapped)	
ICAO Code	EI
LTP/FTP Orthometric Height	61.6 m
SBAS EGNOS Channel	59277