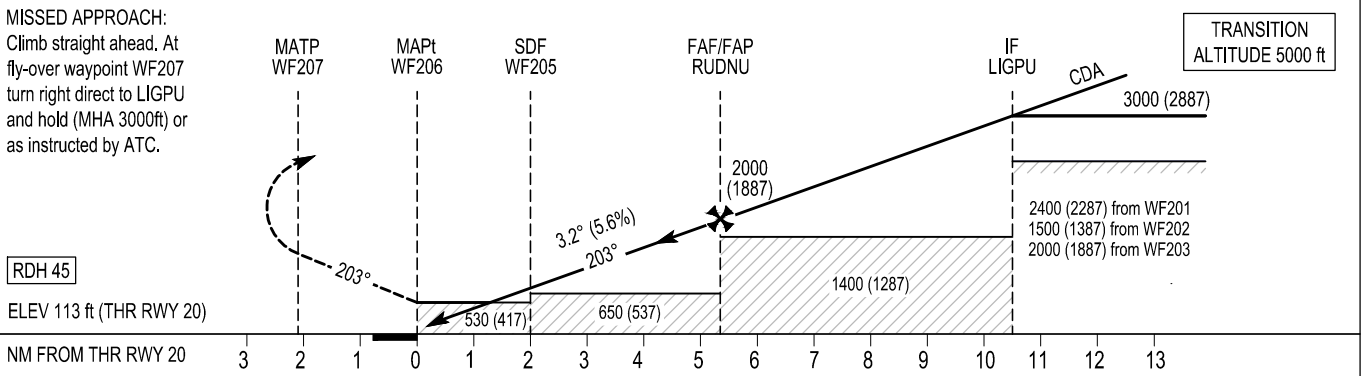


MISSED APPROACH:

Climb straight ahead. At fly-over waypoint WF207 turn right direct to LIGPU and hold (MHA 3000ft) or as instructed by ATC.



OCA (H)	A	B	C
LNAV	530 (417)		
LNAV / VNAV	420 (307)	430 (317)	
LPV	380 (267)	390 (277)	400 (287)
Visual Manoeuvring (Heights AAL)	640 (521)	790 (671)	940 (821)

NOTE:
1. The Visual Segment Surface (VSS) is penetrated by vegetation (trees) on the right side of the final approach track.

Recommended LNAV Profile on Final Approach							
DIST THR RWY 20 (NM)	2	3	4	5			
ALT / HT (ft)	840 (727)	1180 (1067)	1520 (1407)	1860 (1747)			
Ground Speed	kts		80	100	120	140	160
Descent rate gradient - 5.6% (3.2°) 340 ft/NM	ft / min		450	570	680	790	900

CHANGE: New chart.

Waterford RNP RWY20 via WF201

Nav. Spec.	WPT Name	Latitude (N) / Longitude (W)	Path Term	Fly-By Fly-Over	True track / Mag track (°)	Distance (NM)	Upper limit / Lower limit (ft)	Speed limit (kts)	VPA (°) / TCH (ft)	Remarks
RNP APCH	WF201	522305.5 / 0070631.7	IF	-	-	-	- / +A3000	-	-	-
RNP APCH	LIGPU	522118.5 / 0065854.3	TF	Fly-By	110.9 / 113	5.0	- / +A3000	-	-	-
RNP APCH	RUDNU	521630.4 / 0070155.0	TF	Fly-By	201.0 / 203	5.2	-	-	-	Turn R
RNP APCH	WF205	521323.1 / 0070352.3	TF	Fly-By	201.0 / 203	3.3	-	-	-	-
RNP APCH	WF206	521131.2 / 0070502.2	TF	Fly-Over	201.0 / 203	2.0	-	-	3.2 / 45	-
RNP APCH	WF207	520933.8 / 0070615.7	CF	Fly-Over	201.0 / 203	-	-	-	-	206° WTD / D1.2 IWD
RNP APCH	LIGPU	522118.5 / 0065854.3	DF	Fly-By	-	-	- / +A3000	-	-	Turn R

Waterford RNP RWY20 via WF202

Nav. Spec.	WPT Name	Latitude (N) / Longitude (W)	Path Term	Fly-By Fly-Over	True track / Mag track (°)	Distance (NM)	Upper limit / Lower limit (ft)	Speed limit (kts)	VPA (°) / TCH (ft)	Remarks
RNP APCH	WF202	522558.2 / 0065558.6	IF	-	-	-	- / +A4000	-	-	-
RNP APCH	LIGPU	522118.5 / 0065854.3	TF	Fly-By	201.0 / 203	5.0	- / +A3000	-	-	-
RNP APCH	RUDNU	521630.4 / 0070155.0	TF	Fly-By	201.0 / 203	5.2	-	-	-	-
RNP APCH	WF205	521323.1 / 0070352.3	TF	Fly-By	201.0 / 203	3.3	-	-	-	-
RNP APCH	WF206	521131.2 / 0070502.2	TF	Fly-Over	201.0 / 203	2.0	-	-	3.2 / 45	-
RNP APCH	WF207	520933.8 / 0070615.7	CF	Fly-Over	201.0 / 203	-	-	-	-	206° WTD / D1.2 IWD
RNP APCH	LIGPU	522118.5 / 0065854.3	DF	Fly-By	-	-	- / +A3000	-	-	Turn R

Waterford RNP RWY20 via WF203

Nav. Spec.	WPT Name	Latitude (N) / Longitude (W)	Path Term	Fly-By Fly-Over	True track / Mag track (°)	Distance (NM)	Upper limit / Lower limit (ft)	Speed limit (kts)	VPA (°) / TCH (ft)	Remarks
RNP APCH	WF203	521930.8 / 0065117.5	IF	-	-	-	- / +A3000	-	-	-
RNP APCH	LIGPU	522118.5 / 0065854.3	TF	Fly-By	291.1 / 293	5.0	- / +A3000	-	-	-
RNP APCH	RUDNU	521630.4 / 0070155.0	TF	Fly-By	201.0 / 203	5.2	-	-	-	Turn L
RNP APCH	WF205	521323.1 / 0070352.3	TF	Fly-By	201.0 / 203	3.3	-	-	-	-
RNP APCH	WF206	521131.2 / 0070502.2	TF	Fly-Over	201.0 / 203	2.0	-	-	3.2 / 45	-
RNP APCH	WF207	520933.8 / 0070615.7	CF	Fly-Over	201.0 / 203	-	-	-	-	206° WTD / D1.2 IWD
RNP APCH	LIGPU	522118.5 / 0065854.3	DF	Fly-By	-	-	- / +A3000	-	-	Turn R

Hold Identification – LIGPU

Holding Fix	Latitude (N) / Longitude (W)	Inbound True Track (degrees)	Inbound Mag Track (degrees)	Maximum Indicated Airspeed (kts)	Minimum Holding Altitude (ft)	Outbound time (min)	Direction of Turn
LIGPU	522118.5 / 0065854.3	201.03	203	210	+A3000	1	L

**SBAS FAS Data Block Coding Data
Waterford RNP RWY20**

Input Data	
Operation Type	0
Service Provider	1 (EGNOS)
Airport Identifier	EIWF
Runway	20
Runway Direction	0 (None)
Approach Performance Designator	0
Route Indicator	
Reference Path Data Selector	0
Reference Path Identifier	E20A
LTP / FTP Latitude	521131.2400N
LTP / FTP Longitude	0070502.2400W
LTP / FTP Ellipsoidal Height	90.2 m
FPAP Latitude	521040.0460N
Delta FPAP Latitude	-51.1940 seconds
FPAP Longitude	0070534.2245W
Delta FPAP Longitude	-31.9845 seconds
Threshold Crossing Height	45
TCH Units Selector	0 (feet)
Glidepath Angle	3.20°
Course Width	105 m
Length Offset	408 m
HAL	40 m
VAL	35 m
Output Data	
Data Block	10 06 17 09 05 14 00 00 01 30 32 05 50 FC 65 16 C0 BB F5 FC 89 17 0C 70 FE 1F 06 FF C2 01 40 01 64 33 C8 AF F7 C9 2C 74
Calculated CRC Value	F7C92C74
Required Additional Data	
ICAO Code	EI
LTP/FTP Orthometric Height	34.35 m
FPAP Orthometric Height (metres)	34.35
SBAS EGNOS Channel	60002