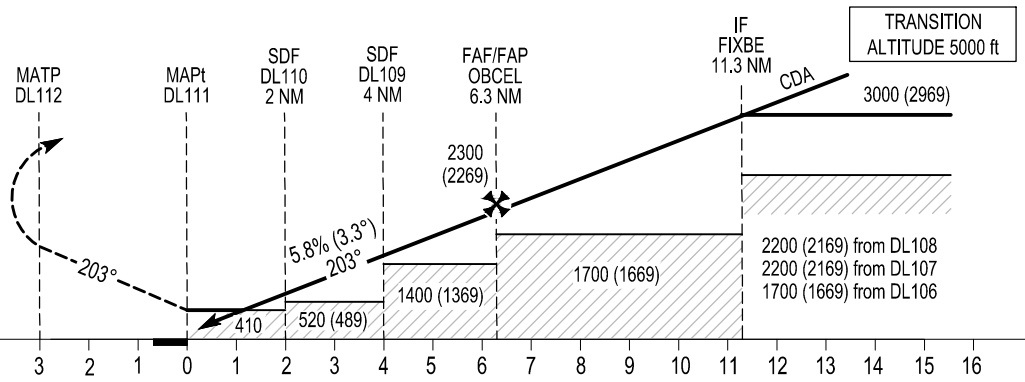


MISSED APPROACH:
Climb straight ahead. At fly-over waypoint DL112 turn right direct to FIXBE to enter the hold (MHA 3000 ft) or as instructed by ATC.

RDH 50

ELEV 31 ft (THR RWY 20)

NM FROM THR RWY 20



TRANSITION ALTITUDE 5000 ft

3000 (2969)

2200 (2169) from DL108
2200 (2169) from DL107
1700 (1669) from DL106

OCA (H)		A	B	C
LNAV		410 (379)		
LNAV / VNAV		280 (249)	290 (259)	300 (269)
LPV		266 (235)	276 (245)	289 (258)
Visual Manoeuvring (Heights AAL)	Total Area	700 (669)		1950 (1919)
	West of RWY	540 (509)	610 (579)	840 (809)

CAUTION:

- This procedure lies over high ground. Do not descend below minimum procedural level.
- Turbulence may be experienced due to terrain.

NOTE:

- Instrument approaches only available when ATC zone is active.
- Visual segment penetrated to the left and right of track.
- PAPI 3.5° nominal descent gradient 3.3°.

Recommended Profile in Final Approach

DIST THR RWY 20 (NM)	1	2	3	4	5	6
ALT / HT (ft)	430 (399)	780 (749)	1130 (1099)	1480 (1449)	1830 (1799)	2180 (2149)
Ground Speed	kts		80	100	110	120
Descent rate gradient - 5.8% (3.3°) 350 ft/NM	ft / min		470	580	640	700
			80	100	110	120
			470	580	640	700

CHANGE: New Chart.

Donegal RNP RWY 20 via DL106

Nav. Spec.	WPT Name	Latitude (N) / Longitude (W)	Path Term	Fly-By / Fly-Over	True track / Mag track (°)	Distance (NM)	Upper limit / Lower limit (ft)	Speed limit (kts)	VPA (°) / TCH (ft)	Remarks
RNP APCH	DL106	551513.9 / 0082113.8	IF	-	-	-	- / +A3000	-	-	-
RNP APCH	FIXBE	551334.0 / 0081322.0	TF	Fly-By	110.3 / 113	4.8	- / +A3000	-	-	-
RNP APCH	OBCEL	550853.4 / 0081624.6	TF	Fly-By	200.4 / 203	5.0	-	-	-	Turn R
RNP APCH	DL109	550642.4 / 0081749.8	TF	Fly-By	200.4 / 203	2.3	-	-	-	-
RNP APCH	DL110	550450.1 / 0081902.7	TF	Fly-By	200.4 / 203	2.0	-	-	-	-
RNP APCH	DL111	550257.9 / 0082015.5	TF	Fly-Over	200.4 / 203	2.0	-	-	3.3 / 50	-
RNP APCH	DL112	550009.5 / 0082204.6	CF	Fly-Over	200.4 / 203	-	-	-	-	205° CFN / D2.4 IFN
RNP APCH	FIXBE	551334.0 / 0081322.0	DF	Fly-By	-	-	- / +A3000	-	-	Turn R

Donegal RNP RWY 20 via DL107

Nav. Spec.	WPT Name	Latitude (N) / Longitude (W)	Path Term	Fly-By / Fly-Over	True track / Mag track (°)	Distance (NM)	Upper limit / Lower limit (ft)	Speed limit (kts)	VPA (°) / TCH (ft)	Remarks
RNP APCH	DL107	551814.6 / 0081019.1	IF	-	-	-	- / +A3300	-	-	-
RNP APCH	FIXBE	551334.0 / 0081322.0	TF	Fly-By	200.4 / 203	5.0	- / +A3000	-	-	-
RNP APCH	OBCEL	550853.4 / 0081624.6	TF	Fly-By	200.4 / 203	5.0	-	-	-	-
RNP APCH	DL109	550642.4 / 0081749.8	TF	Fly-By	200.4 / 203	2.3	-	-	-	-
RNP APCH	DL110	550450.1 / 0081902.7	TF	Fly-By	200.4 / 203	2.0	-	-	-	-
RNP APCH	DL111	550257.9 / 0082015.5	TF	Fly-Over	200.4 / 203	2.0	-	-	3.3 / 50	-
RNP APCH	DL112	550009.5 / 0082204.6	CF	Fly-Over	200.4 / 203	-	-	-	-	205° CFN / D2.4 IFN
RNP APCH	FIXBE	551334.0 / 0081322.0	DF	Fly-By	-	-	- / +A3000	-	-	Turn R

Donegal RNP RWY 20 via DL108

Nav. Spec.	WPT Name	Latitude (N) / Longitude (W)	Path Term	Fly-By / Fly-Over	True track / Mag track (°)	Distance (NM)	Upper limit / Lower limit (ft)	Speed limit (kts)	VPA (°) / TCH (ft)	Remarks
RNP APCH	DL108	551149.3 / 0080511.4	IF	-	-	-	- / +A3600	-	-	-
RNP APCH	FIXBE	551334.0 / 0081322.0	TF	Fly-By	290.5 / 293	5.0	- / +A3000	-	-	-
RNP APCH	OBCEL	550853.4 / 0081624.6	TF	Fly-By	200.4 / 203	5.0	-	-	-	Turn L
RNP APCH	DL109	550642.4 / 0081749.8	TF	Fly-By	200.4 / 203	2.3	-	-	-	-
RNP APCH	DL110	550450.1 / 0081902.7	TF	Fly-By	200.4 / 203	2.0	-	-	-	-
RNP APCH	DL111	550257.9 / 0082015.5	TF	Fly-Over	200.4 / 203	2.0	-	-	3.3 / 50	-
RNP APCH	DL112	550009.5 / 0082204.6	CF	Fly-Over	200.4 / 203	-	-	-	-	205° CFN / D2.4 IFN
RNP APCH	FIXBE	551334.0 / 0081322.0	DF	Fly-By	-	-	- / +A3000	-	-	Turn R

Hold Identification

Holding Fix	Latitude (N) / Longitude (W)	Inbound True Track (degrees)	Inbound Mag Track (degrees)	Maximum Indicated Airspeed (kts)	Minimum Holding Altitude (ft)	Maximum Holding Level (FL)	Outbound time (min)	Direction of Turn
FIXBE	551334.0 / 0081322.0	200.4	203	240	+A3000	FL075	1	L

**SBAS FAS Data Block Coding Data
Donegal RNP RWY 20**

Input Data	
Operation Type	[0] Straight-in/Offset approach
Service Provider	[1] EGNOS
Airport Identifier	EIDL
Runway	20
Runway Direction	[0] None
Approach Performance Designator	[0] APV
Route Indicator	
Reference Path Data Selector	0
Reference Path Identifier	E20A
LTP / FTP Latitude	550257.8460N
LTP / FTP Longitude	0082015.4555W
LTP / FTP Ellipsoidal Height	66.6 m
FPAP Latitude	550222.7205N
Delta FPAP Latitude	-35.1255 seconds
FPAP Longitude	0082038.1955W
Delta FPAP Longitude	-22.7400 seconds
Threshold Crossing Height	50 ft
Glidepath Angle	3.3 °
Course Width	105 m
Length Offset	328 m
HAL	40 m
VAL	35 m
Output Data	
Data Block	10 0C 04 09 05 14 00 00 01 30 32 05 6C E8 9F 17 41 00 6C FC 9A 16 95 ED FE 58 4E FF F4 01 4A 01 64 29 C8 AF E6 13 AA 7B
Calculated CRC Value	E613AA7B
Required Additional Data	
ICAO Code	EI
LTP/FTP Orthometric Height	9.3 m
FPAP Orthometric Height (metres)	9.3
SBAS EGNOS Channel	57174