

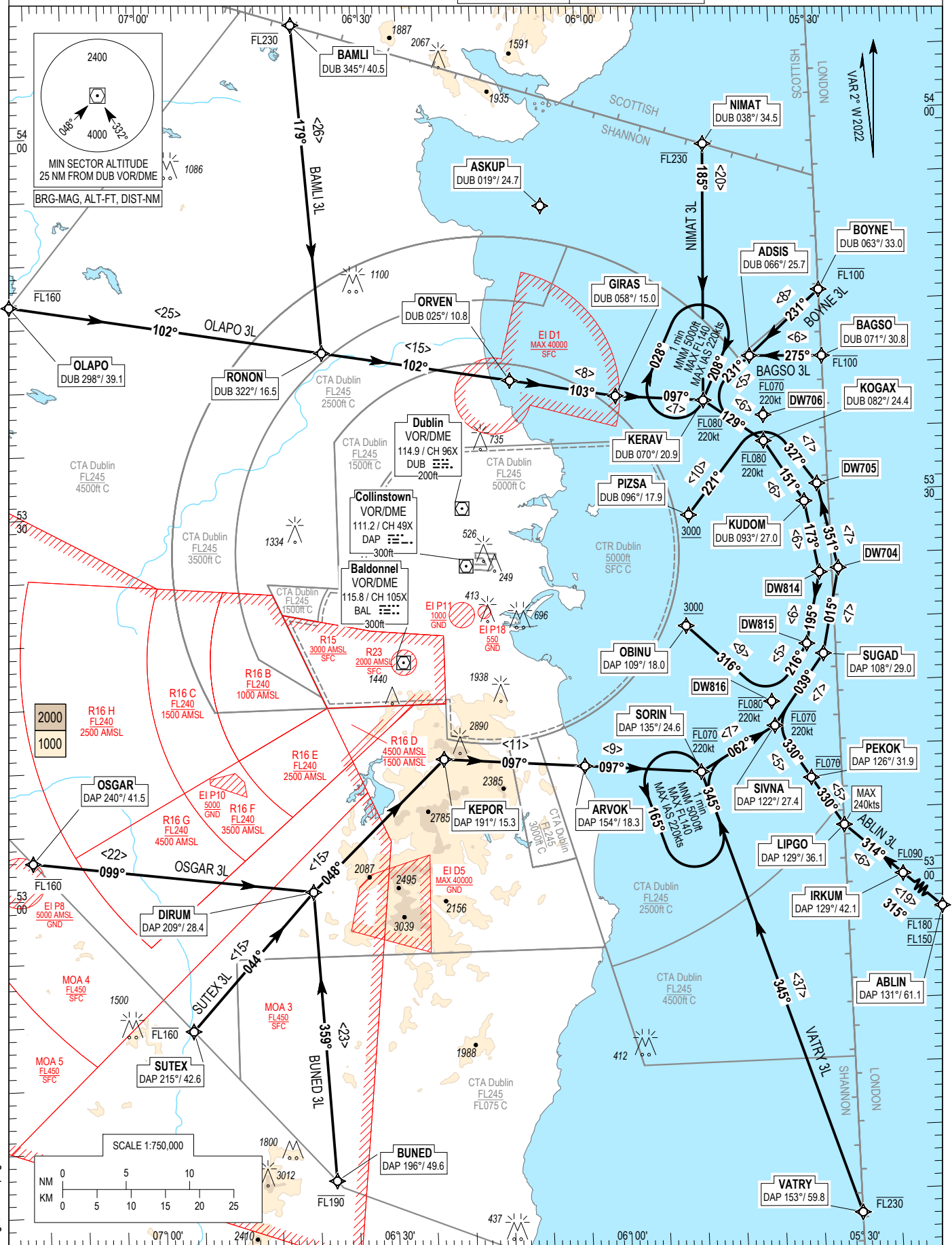
RNAV STANDARD ARRIVAL CHART
INSTRUMENT (STAR) - ICAO

TRANS ALT 5000ft
TRANS LEVEL by ATC

ATIS APP	124.530	ACC Upper North	129.180
	121.100	ACC Upper South	135.655
		ACC Lower North	132.580
		ACC Lower South	120.755

DUBLIN RWY 28 L/R

NIMAT 3L, BOYNE 3L, BAGSO 3L, ABLIN 3L, VATRY 3L,
BUNED 3L, SUTEX 3L, OSGAR 3L, OLAPO 3L, BAMLI 3L



CHANGE: Bearings, Verso page and Grosscheck.

NOTES: 1. ASKUP may be used tactically by ATC to ensure aircraft routings are clear of EI D1. 2. DME/DME or GNSS navigation required. 3. Aircraft routing via ASKUP that experience radio communication failure should follow the appropriate procedure for the arrival runway remaining clear of EI D1.

VERTICAL PLANNING INFORMATION: 1. ACTUAL DESCENT CLEARANCE WILL BE AS DIRECTED BY ATC.

CAUTION: 1. Pilots must inform ATC if unable to comply with any level or speed constraint.

06 OCT 2022

ABLN3L STAR RWY 28L/R

ABLI3L

Nav. Spec.	WPT Name	Latitude (N)/ Longitude (W)	Path Term	Fly-By Fly-over	True track / Mag track	Distance (NM)	Upper limit / Lower limit	Speed Limit (kts)	Remarks
RNAV1	ABLIN	524658.0 / 0045933.0	IF	-	-	-	-FL180 / +FL150	-	-
RNAV1	IRKUM	525948.0 / 0052239.0	TF	Fly-by	312.7 / 315	19.0	- / +FL090	-	-
RNAV1	LIPGO	530350.1 / 0053000.0	TF	Fly-by	312.4 / 314	6.0	-	240	-
RNAV1	PEKOK	530739.3 / 0053400.8	TF	Fly-by	327.7 / 330	4.5	FL070 / FL070	-	Turn R
RNAV1	SIVNA	531152.3 / 0053827.7	TF	Fly-by	327.7 / 330	5.0	FL070 / FL070	220	-
RNAV1	SUGAD	531722.5 / 0053139.8	TF	Fly-by	036.5 / 039	6.9	FL070 / FL070	220	Turn R
RNAV1	DW704	532403.7 / 0052910.1	TF	Fly-by	012.6 / 015	6.9	FL070 / FL070	220	Turn L
RNAV1	DW705	533046.6 / 0053126.4	TF	Fly-by	348.6 / 351	6.9	FL070 / FL070	220	Turn L
RNAV1	DW706	533621.3 / 0053806.9	TF	Fly-by	324.6 / 327	6.9	FL070 / FL070	220	Turn L
RNAV1	PIZSA	532844.3 / 0054833.6	TF	Fly-by	219.3 / 221	9.9	- / +A3000	-	Turn L

BAGSO3L STAR RWY 28L/R

BAGS3L

Nav. Spec.	WPT Name	Latitude (N)/ Longitude (W)	Path Term	Fly-By Fly-over	True track / Mag track	Distance (NM)	Upper limit / Lower limit	Speed Limit (kts)	Remarks
RNAV1	BAGSO	534048.0 / 0053000.0	IF	-	-	-	-FL100 / -	-	-
RNAV1	ADSI	534103.1 / 0053934.0	TF	Fly-by	272.6 / 275	5.7	-	-	-
RNAV1	KERAV	533742.7 / 0054557.3	TF	Fly-by	228.7 / 231	5.1	FL080 / FL080	220	Turn L
RNAV1	KOGAX	533418.6 / 0053814.1	TF	Fly-by	126.5 / 129	5.7	FL080 / FL080	220	Turn L
RNAV1	KUDOM	532925.8 / 0053314.3	TF	Fly-by	148.6 / 151	5.7	FL080 / FL080	220	Turn R
RNAV1	DW814	532347.5 / 0053141.1	TF	Fly-by	170.6 / 173	5.7	FL080 / FL080	220	Turn R
RNAV1	DW815	531812.9 / 0053346.6	TF	Fly-by	192.7 / 195	5.7	FL080 / FL080	220	Turn R
RNAV1	DW816	531346.9 / 0053844.4	TF	Fly-by	213.9 / 216	5.3	FL080 / FL080	220	Turn R
RNAV1	OBINU	532001.7 / 0054931.2	TF	Fly-by	314.1 / 316	9.0	- / +A3000	-	Turn R

BAML3L STAR RWY 28L/R

BAML3L

Nav. Spec.	WPT Name	Latitude (N)/ Longitude (W)	Path Term	Fly-By Fly-over	True track / Mag track	Distance (NM)	Upper limit / Lower limit	Speed Limit (kts)	Remarks
RNAV1	BAML1	540828.5 / 0063904.0	IF	-	-	-	-FL230 / -	-	-
RNAV1	RONON	534233.9 / 0063619.2	TF	Fly-by	176.4 / 179	26.0	-	-	-
RNAV1	ORVEN	533953.5 / 0061129.8	TF	Fly-by	100.1 / 102	15.0	-	-	Turn L
RNAV1	GIRAS	533821.0 / 0055733.2	TF	Fly-by	100.4 / 103	8.4	-	-	-
RNAV1	KERAV	533742.7 / 0054557.3	TF	Fly-by	095.2 / 097	6.9	FL080 / FL080	220	Turn L
RNAV1	KOGAX	533418.6 / 0053814.1	TF	Fly-by	126.5 / 129	5.7	FL080 / FL080	220	Turn R
RNAV1	KUDOM	532925.8 / 0053314.3	TF	Fly-by	148.6 / 151	5.7	FL080 / FL080	220	Turn R
RNAV1	DW814	532347.5 / 0053141.1	TF	Fly-by	170.6 / 173	5.7	FL080 / FL080	220	Turn R
RNAV1	DW815	531812.9 / 0053346.6	TF	Fly-by	192.7 / 195	5.7	FL080 / FL080	220	Turn R
RNAV1	DW816	531346.9 / 0053844.4	TF	Fly-by	213.9 / 216	5.3	FL080 / FL080	220	Turn R
RNAV1	OBINU	532001.7 / 0054931.2	TF	Fly-by	314.1 / 316	9.0	- / +A3000	-	Turn R

BOYNE3L STAR RWY 28L/R

BOYN3L

Nav. Spec.	WPT Name	Latitude (N)/ Longitude (W)	Path Term	Fly-By Fly-over	True track / Mag track	Distance (NM)	Upper limit / Lower limit	Speed Limit (kts)	Remarks
RNAV1	BOYNE	534601.6 / 0053000.0	IF	-	-	-	-FL100 / -	-	-
RNAV1	ADSI	534103.1 / 0053934.0	TF	Fly-by	228.8 / 231	7.6	-	-	-
RNAV1	KERAV	533742.7 / 0054557.3	TF	Fly-by	228.7 / 231	5.1	FL080 / FL080	220	-
RNAV1	KOGAX	533418.6 / 0053814.1	TF	Fly-by	126.5 / 129	5.7	FL080 / FL080	220	Turn L
RNAV1	KUDOM	532925.8 / 0053314.3	TF	Fly-by	148.6 / 151	5.7	FL080 / FL080	220	Turn R
RNAV1	DW814	532347.5 / 0053141.1	TF	Fly-by	170.6 / 173	5.7	FL080 / FL080	220	Turn R
RNAV1	DW815	531812.9 / 0053346.6	TF	Fly-by	192.7 / 195	5.7	FL080 / FL080	220	Turn R
RNAV1	DW816	531346.9 / 0053844.4	TF	Fly-by	213.9 / 216	5.3	FL080 / FL080	220	Turn R
RNAV1	OBINU	532001.7 / 0054931.2	TF	Fly-by	314.1 / 316	9.0	- / +A3000	-	Turn R

BUNED3L STAR RWY 28L/R

BUNE3L

Nav. Spec.	WPT Name	Latitude (N)/ Longitude (W)	Path Term	Fly-By Fly-over	True track / Mag track	Distance (NM)	Upper limit / Lower limit	Speed Limit (kts)	Remarks
RNAV1	BUNED	523721.9 / 0063748.2	IF	-	-	-	-FL190 / -	-	-
RNAV1	DIRUM	530009.7 / 0063940.0	TF	Fly-by	357.2 / 359	22.9	-	-	-
RNAV1	KEPOR	531016.5 / 0062200.7	TF	Fly-by	046.3 / 048	14.7	-	-	Turn R
RNAV1	ARVOK	530919.0 / 0060335.1	TF	Fly-by	094.8 / 097	11.1	-	-	Turn R
RNAV1	SORIN	530829.3 / 0054822.5	TF	Fly-by	095.1 / 097	9.2	FL070 / FL070	220	-
RNAV1	SIVNA	531152.3 / 0053827.7	TF	Fly-by	060.3 / 062	6.9	FL070 / FL070	220	Turn L
RNAV1	SUGAD	531722.5 / 0053139.8	TF	Fly-by	036.5 / 039	6.9	FL070 / FL070	220	Turn L
RNAV1	DW704	532403.7 / 0052910.1	TF	Fly-by	012.6 / 015	6.9	FL070 / FL070	220	Turn L
RNAV1	DW705	533046.6 / 0053126.4	TF	Fly-by	348.6 / 351	6.9	FL070 / FL070	220	Turn L
RNAV1	DW706	533621.3 / 0053806.9	TF	Fly-by	324.6 / 327	6.9	FL070 / FL070	220	Turn L
RNAV1	PIZSA	532844.3 / 0054833.6	TF	Fly-by	219.3 / 221	9.9	- / +A3000	-	Turn L

NIMAT3L STAR RWY 28L/R

NIMA3L

Nav. Spec.	WPT Name	Latitude (N)/ Longitude (W)	Path Term	Fly-By Fly-over	True track / Mag track	Distance (NM)	Upper limit / Lower limit	Speed Limit (kts)	Remarks
RNAV1	NIMAT	535754.1 / 0054431.7	IF	-	-	-	-FL230 / -	-	-
RNAV1	KERAV	533742.7 / 0054557.3	TF	Fly-by	182.4 / 185	20.2	FL080 / FL080	220	-
RNAV1	KOGAX	533418.6 / 0053814.1	TF	Fly-by	126.5 / 129	5.7	FL080 / FL080	220	Turn L
RNAV1	KUDOM	532925.8 / 0053314.3	TF	Fly-by	148.6 / 151	5.7	FL080 / FL080	220	Turn R
RNAV1	DW814	532347.5 / 0053141.1	TF	Fly-by	170.6 / 173	5.7	FL080 / FL080	220	Turn R
RNAV1	DW815	531812.9 / 0053346.6	TF	Fly-by	192.7 / 195	5.7	FL080 / FL080	220	Turn R
RNAV1	DW816	531346.9 / 0053844.4	TF	Fly-by	213.9 / 216	5.3	FL080 / FL080	220	Turn R
RNAV1	OBINU	532001.7 / 0054931.2	TF	Fly-by	314.1 / 316	9.0	- / +A3000	-	Turn R

06 OCT 2022

OLAPO3L STAR RWY 28L/R
OLAP3L

Nav. Spec.	WPT Name	Latitude (N)/ Longitude (W)	Path Term	Fly-By Fly-over	True track / Mag track	Distance (NM)	Upper limit / Lower limit	Speed Limit (kts)	Remarks
RNAV1	OLAPO	534649.0 / 0071740.6	IF	-	-	-	-FL160 / -	-	-
RNAV1	RONON	534233.9 / 0063619.2	TF	Fly-by	099.6 / 102	24.9	-	-	-
RNAV1	ORVEN	533953.5 / 0061129.8	TF	Fly-by	100.1 / 102	15.0	-	-	-
RNAV1	GIRAS	533821.0 / 0055733.2	TF	Fly-by	100.4 / 103	8.4	-	-	-
RNAV1	KERAV	533742.7 / 0054557.3	TF	Fly-by	095.2 / 097	6.9	FL080 / FL080	220	Turn L
RNAV1	KOGAX	533418.6 / 0053814.1	TF	Fly-by	126.5 / 129	5.7	FL080 / FL080	220	Turn R
RNAV1	KUDOM	532925.8 / 0053314.3	TF	Fly-by	148.6 / 151	5.7	FL080 / FL080	220	Turn R
RNAV1	DW814	532347.5 / 0053141.1	TF	Fly-by	170.6 / 173	5.7	FL080 / FL080	220	Turn R
RNAV1	DW815	531812.9 / 0053346.6	TF	Fly-by	192.7 / 195	5.7	FL080 / FL080	220	Turn R
RNAV1	DW816	531346.9 / 0053844.4	TF	Fly-by	213.9 / 216	5.3	FL080 / FL080	220	Turn R
RNAV1	OBINU	532001.7 / 0054931.2	TF	Fly-by	314.1 / 316	9.0	- / +A3000	-	Turn R

OSGAR3L STAR RWY 28L/R
OSGA3L

Nav. Spec.	WPT Name	Latitude (N)/ Longitude (W)	Path Term	Fly-By Fly-over	True track / Mag track	Distance (NM)	Upper limit / Lower limit	Speed Limit (kts)	Remarks
RNAV1	OSGAR	530257.9 / 0071612.8	IF	-	-	-	-FL160 / -	-	-
RNAV1	DIRUM	530009.7 / 0063940.0	TF	Fly-by	097.0 / 099	22.2	-	-	-
RNAV1	KEPOR	531016.5 / 0062200.7	TF	Fly-by	046.3 / 048	14.7	-	-	Turn L
RNAV1	ARVOK	530919.0 / 0060335.1	TF	Fly-by	094.8 / 097	11.1	-	-	Turn R
RNAV1	SORIN	530829.3 / 0054822.5	TF	Fly-by	095.1 / 097	9.2	FL070 / FL070	220	-
RNAV1	SIVNA	531152.3 / 0053827.7	TF	Fly-by	060.3 / 062	6.9	FL070 / FL070	220	Turn L
RNAV1	SUGAD	531722.5 / 0053139.8	TF	Fly-by	036.5 / 039	6.9	FL070 / FL070	220	Turn L
RNAV1	DW704	532403.7 / 0052910.1	TF	Fly-by	012.6 / 015	6.9	FL070 / FL070	220	Turn L
RNAV1	DW705	533046.6 / 0053126.4	TF	Fly-by	348.6 / 351	6.9	FL070 / FL070	220	Turn L
RNAV1	DW706	533621.3 / 0053806.9	TF	Fly-by	324.6 / 327	6.9	FL070 / FL070	220	Turn L
RNAV1	PIZSA	532844.3 / 0054833.6	TF	Fly-by	219.3 / 221	9.9	- / +A3000	-	Turn L

SUTEX3L STAR RWY 28L/R
SUTE3L

Nav. Spec.	WPT Name	Latitude (N)/ Longitude (W)	Path Term	Fly-By Fly-over	True track / Mag track	Distance (NM)	Upper limit / Lower limit	Speed Limit (kts)	Remarks
RNAV1	SUTEX	524927.7 / 0065549.3	IF	-	-	-	-FL160 / -	-	-
RNAV1	DIRUM	530009.7 / 0063940.0	TF	Fly-by	042.3 / 044	14.5	-	-	-
RNAV1	KEPOR	531016.5 / 0062200.7	TF	Fly-by	046.3 / 048	14.7	-	-	Turn R
RNAV1	ARVOK	530919.0 / 0060335.1	TF	Fly-by	094.8 / 097	11.1	-	-	Turn R
RNAV1	SORIN	530829.3 / 0054822.5	TF	Fly-by	095.1 / 097	9.2	FL070 / FL070	220	-
RNAV1	SIVNA	531152.3 / 0053827.7	TF	Fly-by	060.3 / 062	6.9	FL070 / FL070	220	Turn L
RNAV1	SUGAD	531722.5 / 0053139.8	TF	Fly-by	036.5 / 039	6.9	FL070 / FL070	220	Turn L
RNAV1	DW704	532403.7 / 0052910.1	TF	Fly-by	012.6 / 015	6.9	FL070 / FL070	220	Turn L
RNAV1	DW705	533046.6 / 0053126.4	TF	Fly-by	348.6 / 351	6.9	FL070 / FL070	220	Turn L
RNAV1	DW706	533621.3 / 0053806.9	TF	Fly-by	324.6 / 327	6.9	FL070 / FL070	220	Turn L
RNAV1	PIZSA	532844.3 / 0054833.6	TF	Fly-by	219.3 / 221	9.9	- / +A3000	-	Turn L

VATRY3L STAR RWY 28L/R
VATR3L

Nav. Spec.	WPT Name	Latitude (N)/ Longitude (W)	Path Term	Fly-By Fly-over	True track / Mag track	Distance (NM)	Upper limit / Lower limit	Speed Limit (kts)	Remarks
RNAV1	VATRY	523316.0 / 0053000.0	IF	-	-	-	-FL230 / -	-	-
RNAV1	SORIN	530829.3 / 0054822.5	TF	Fly-by	342.6 / 345	37.0	FL070 / FL070	220	-
RNAV1	SIVNA	531152.3 / 0053827.7	TF	Fly-by	060.3 / 062	6.9	FL070 / FL070	220	Turn R
RNAV1	SUGAD	531722.5 / 0053139.8	TF	Fly-by	036.5 / 039	6.9	FL070 / FL070	220	Turn L
RNAV1	DW704	532403.7 / 0052910.1	TF	Fly-by	012.6 / 015	6.9	FL070 / FL070	220	Turn L
RNAV1	DW705	533046.6 / 0053126.4	TF	Fly-by	348.6 / 351	6.9	FL070 / FL070	220	Turn L
RNAV1	DW706	533621.3 / 0053806.9	TF	Fly-by	324.6 / 327	6.9	FL070 / FL070	220	Turn L
RNAV1	PIZSA	532844.3 / 0054833.6	TF	Fly-by	219.3 / 221	9.9	- / +A3000	-	Turn L

Hold Identification – EIDW AD 2.24-22.1

Holding Fix	Latitude (N) / Longitude (W)	Inbound True Track (degrees)	Inbound Mag Track (degrees)	Maximum Indicated Airspeed (kts)	Minimum Holding Altitude (ft)	Maximum Holding Level (FL)	Outbound time (min)	Direction of Turn
KERAV	533742.7 / 0054557.3	205.5	208	220	A5000	FL140	1	R
SORIN	530829.3 / 0054822.5	342.4	345	220	A5000	FL140	1	L