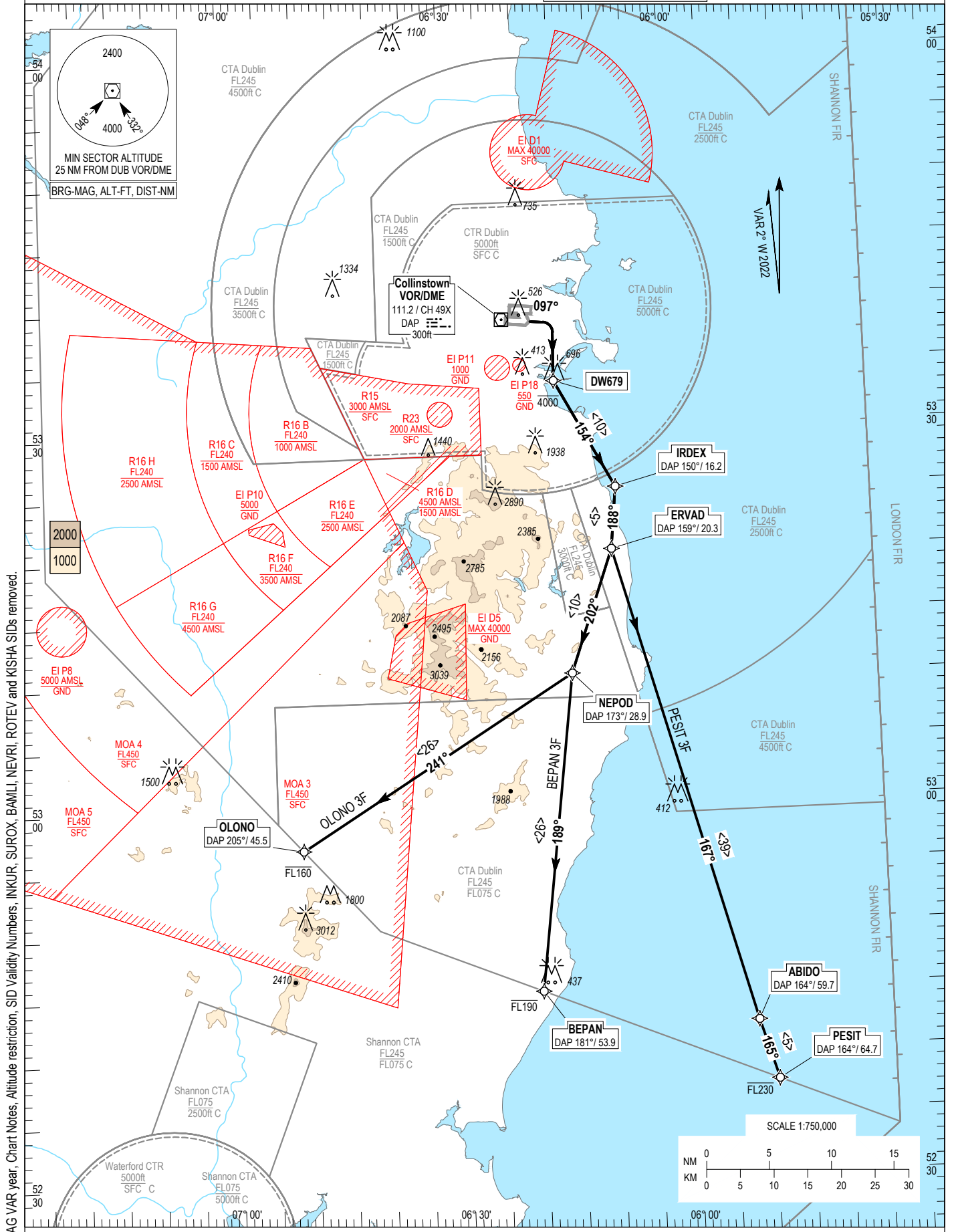


RNAV STANDARD DEPARTURE CHART
INSTRUMENT (SID) - ICAO

TRANS ALT 5000ft
TRANS LEVEL by ATC

ATIS	124.530
TWR	118.600
ACC Lower North	132.580
ACC Lower South	120.755

DUBLIN RWY 10R
CAT A, B
PESIT 3F, BEPAN 3F, OLONO 3F.



NOTES: 1. Climb gradient 6.6 % (400 ft/NM) (3.3% for obstacle clearance). 2. Turn on passing 750ft QNH (No turns before the DER). 3. Close-in obstacles exist. 4. Integrity check fix available from RADAR. 5. Immediately after take off contact ACC Lower South. 6. DME/DME or GNSS navigation required.

PESIT 3F CAT A/B SID RWY10R

PESI3F

Nav. Spec.	WPT Name	Latitude (N)/ Longitude (W)	Path Term	Fly-By Fly-over	True track / Mag track	Distance (NM)	Upper limit / Lower limit (ft)	Speed Limit (kts)	Remarks
RNAV1	-	-	CA	-	095.3 / 097	-	- / A750	-	-
RNAV1	DW679	532023.0 / 0061132.0	DF	Fly-By	-	-	-A4000 / -	-	Turn R
RNAV1	IRDEX	531145.1 / 0060350.1	TF	Fly-By	151.8 / 154	9.8	-	-	Turn L
RNAV1	ERVAD	530647.1 / 0060440.4	TF	Fly-By	185.8 / 188	5.0	-	-	Turn R
RNAV1	ABIDO	522843.7 / 0054744.1	TF	Fly-By	164.8 / 167	39.5	-	-	Turn L
RNAV1	PESIT	522356.6 / 0054524.0	TF	Fly-By	163.4 / 165	5.0	-FL230 / -	-	Turn L

BEPAN 3F CAT A/B SID RWY10R

BEPA3F

Nav. Spec.	WPT Name	Latitude (N)/ Longitude (W)	Path Term	Fly-By Fly-over	True track / Mag track	Distance (NM)	Upper limit / Lower limit (ft)	Speed Limit (kts)	Remarks
RNAV1	-	-	CA	-	095.3 / 097	-	- / A750	-	-
RNAV1	DW679	532023.0 / 0061132.0	DF	Fly-By	-	-	-A4000 / -	-	Turn R
RNAV1	IRDEX	531145.1 / 0060350.1	TF	Fly-By	151.8 / 154	9.8	-	-	Turn L
RNAV1	ERVAD	530647.1 / 0060440.4	TF	Fly-By	185.8 / 188	5.0	-	-	Turn R
RNAV1	NEPOD	525657.2 / 0061029.8	TF	Fly-By	199.7 / 202	10.5	-	-	Turn R
RNAV1	BEPAN	523136.2 / 0061549.5	TF	Fly-By	187.3 / 189	25.6	-FL190 / -	-	Turn L

OLONO 3F CAT A/B SID RWY10R

OLON3F

Nav. Spec.	WPT Name	Latitude (N)/ Longitude (W)	Path Term	Fly-By Fly-over	True track / Mag track	Distance (NM)	Upper limit / Lower limit (ft)	Speed Limit (kts)	Remarks
RNAV1	-	-	CA	-	095.3 / 097	-	- / A750	-	-
RNAV1	DW679	532023.0 / 0061132.0	DF	Fly-By	-	-	-A4000 / -	-	Turn R
RNAV1	IRDEX	531145.1 / 0060350.1	TF	Fly-By	151.8 / 154	9.8	-	-	Turn L
RNAV1	ERVAD	530647.1 / 0060440.4	TF	Fly-By	185.8 / 188	5.0	-	-	Turn R
RNAV1	NEPOD	525657.2 / 0061029.8	TF	Fly-By	199.7 / 202	10.5	-	-	Turn R
RNAV1	OLONO	524323.1 / 0064644.4	TF	Fly-By	238.5 / 241	25.8	-FL160 / -	-	Turn R