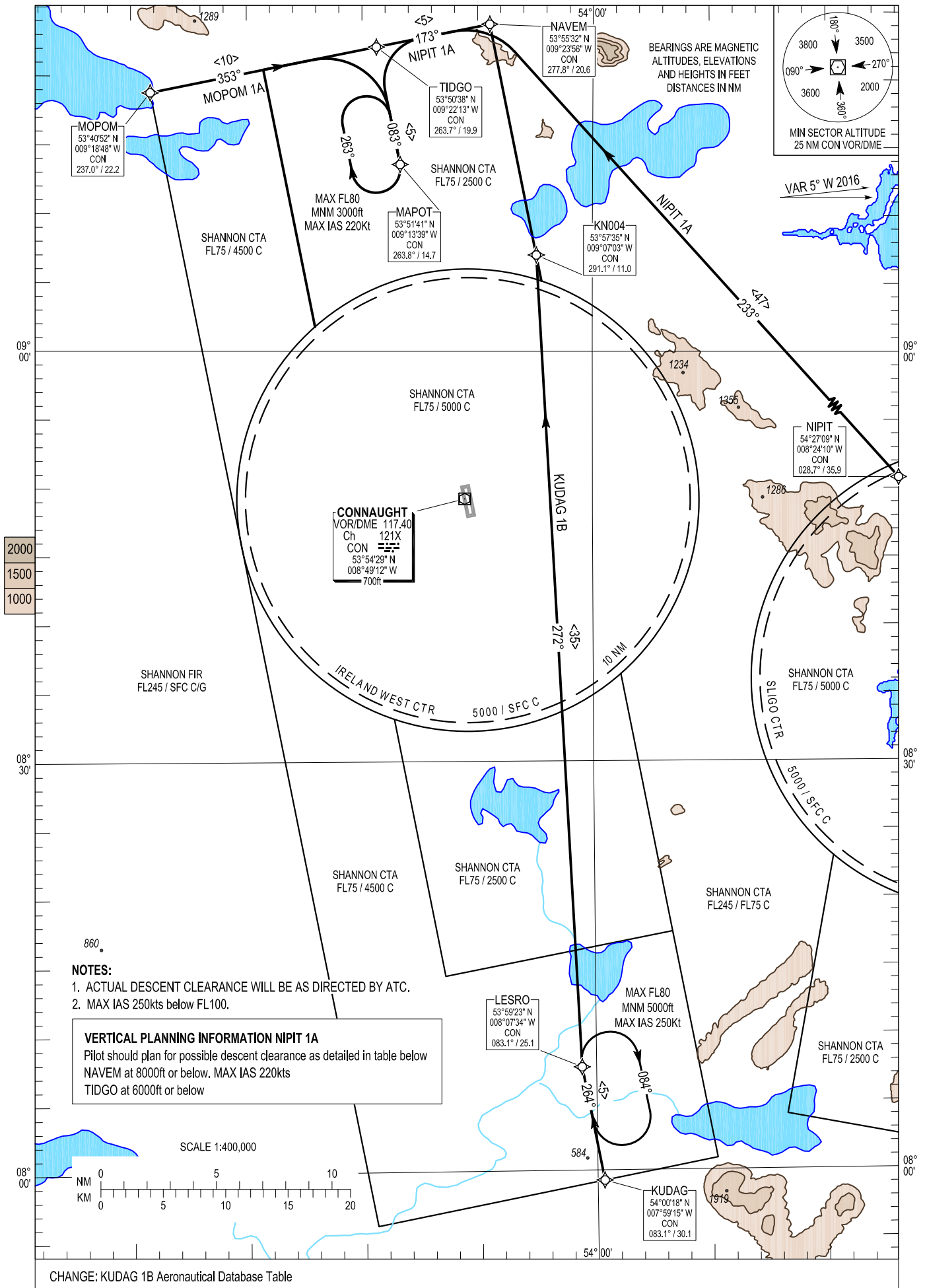


TWR	130.7
GND	130.7, 121.9
Emerg	121.5

NIPIT 1A, KUDAG 1B, MOPOM 1A.



- NOTES:**
1. ACTUAL DESCENT CLEARANCE WILL BE AS DIRECTED BY ATC.
  2. MAX IAS 250kts below FL100.

**VERTICAL PLANNING INFORMATION NIPIT 1A**  
Pilot should plan for possible descent clearance as detailed in table below  
NAVEM at 8000ft or below. MAX IAS 220kts  
TIDGO at 6000ft or below

CHANGE: KUDAG 1B Aeronautical Database Table

MOPOM 1A CAT A/B/C/D STAR RWY08

MOPO1A

Navigation Performance	Path Terminator	WPT Name	Latitude (N)/ Longitude (W)	Fly-By or Fly-over	Distance (NM)	True Track/ Magnetic Track	Upper limit/ Lower Limit	Speed Limit (kts)	Remarks
RNAV1	IF	MOPOM	534052.0 / 0091848.0	Fly-By	-	-	-	-	-
RNAV1	TF	TIDGO	535038.0 / 0092213.0	Fly-By	10.0	348.3 / 353	+3000	-	-
RNAV1	TF	MAPOT	535141.1 / 0091338.9	Fly-By	5.2	078.2 / 083	+3000	-	R

KUDAG 1B CAT A/B/C/D STAR RWY08

KUDA1B

Navigation Performance	Path Terminator	WPT Name	Latitude (N)/ Longitude (W)	Fly-By or Fly-over	Distance (NM)	True Track/ Magnetic Track	Upper limit/ Lower Limit	Speed Limit (kts)	Remarks
RNAV1	IF	KUDAG	540018.0 / 0075915.0	Fly-By	-	-	+4500	-	-
RNAV1	TF	LESRO	535922.7 / 0080734.0	Fly-By	5.0	259.4 / 264	+4500	-	-
RNAV1	TF	KN004	535734.7 / 0090703.2	Fly-By	35.2	267.5 / 273	+3000	-	R

NIPIT 1A CAT A/B/C/D STAR RWY08

NIP1A

Navigation Performance	Path Terminator	WPT Name	Latitude (N)/ Longitude (W)	Fly-By or Fly-over	Distance (NM)	True Track/ Magnetic Track	Upper limit/ Lower Limit	Speed Limit (kts)	Remarks
RNAV1	IF	NIPIT	542709.0 / 0082410.0	Fly-By	-	-	-	-	-
RNAV1	TF	NAVEM	535532.0 / 0092356.0	Fly-By	47.3	228.4 / 233	-8000/+3500	220	-
RNAV1	TF	TIDGO	535038.0 / 0092213.0	Fly-By	5.0	168.3 / 173	-6000/+3500	-	L
RNAV1	TF	MAPOT	535141.1 / 0091338.9	Fly-By	5.2	078.2 / 083	+3000	-	L

**Hold Identification – EIKN AD 2.24-7**

Holding Fix	Latitude (N) / Longitude (W)	Inbound True Track (degrees)	Inbound Mag Track (degrees)	Maximum Indicated Airspeed (kts)	Maximum/Minimum Holding Altitude/ Level (FL/ft)	Distance outbound Limit (NM)	Direction of Turn
LESRO	535922.7 / 0080734.0	259.4	264	250	FL80/5000ft	5.0	R
MAPOT	535141.1 / 0091338.9	078.3	083	220	FL80/3000ft	4.1	R