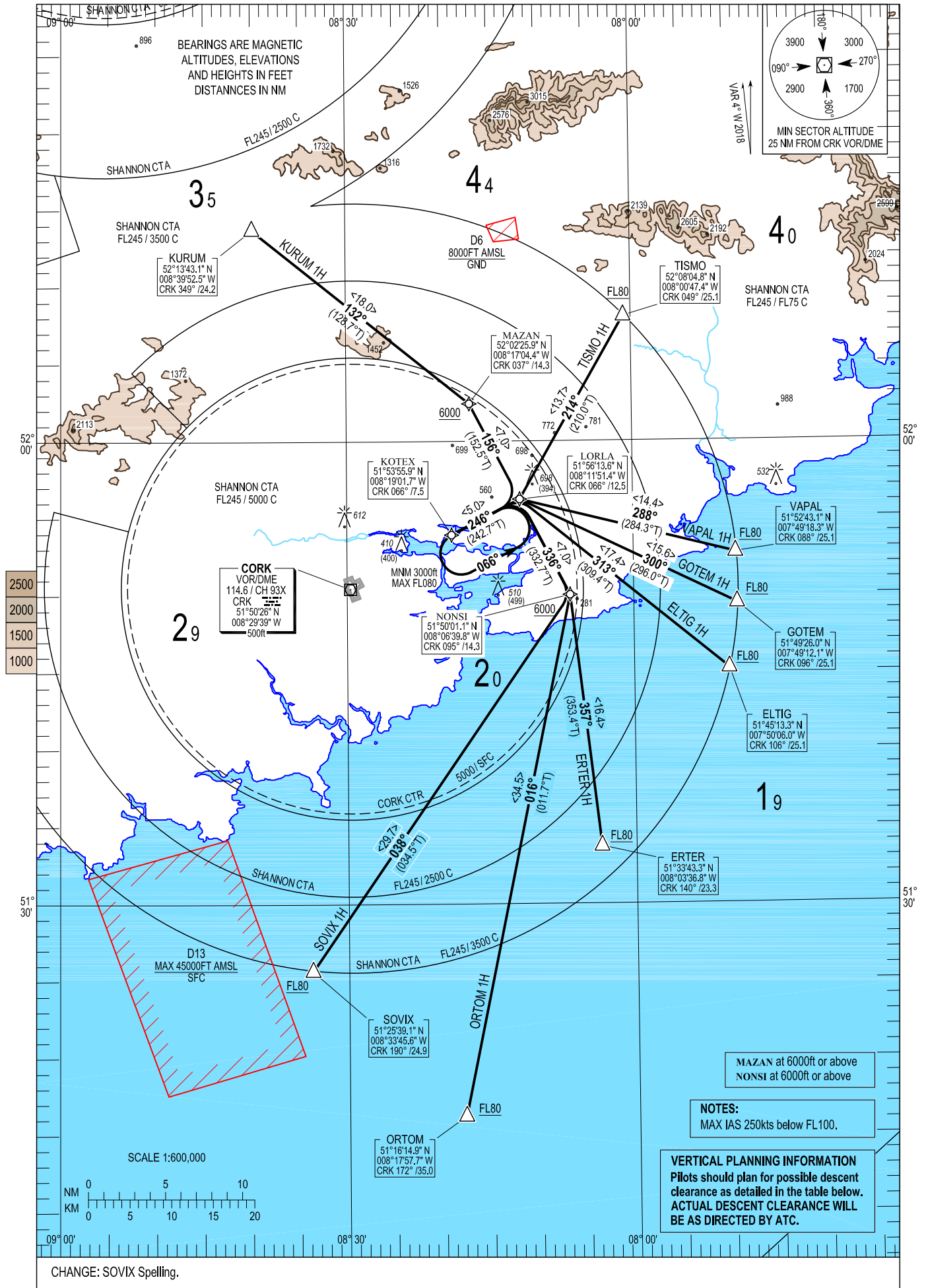


TWR	119.300
GND	121.850
ATIS	120.925
CRK APP	119.900

CORK RWY 25
CAT A, B
 TISMO 1H, VAPAL 1H, GOTEM 1H, ELTIG 1H,
 ERTER 1H, ORTOM 1H, SOVIX 1H, KURUM 1H.



MAZAN at 6000ft or above
 NONSI at 6000ft or above

NOTES:
 MAX IAS 250kts below FL100.

VERTICAL PLANNING INFORMATION
 Pilots should plan for possible descent
 clearance as detailed in the table below.
**ACTUAL DESCENT CLEARANCE WILL
 BE AS DIRECTED BY ATC.**

ELTIG1H CAT A/B STAR RWY25
ELT11H

Navigation Performance	Path Terminator	WPT Name	Latitude (N), Longitude (W)	Fly-By or Fly-Over	Distance (NM)	True track / Magnetic track	Upper limit / Lower limit	Speed Limit (kts)	Remarks
RNAV 1	IF	ELTIG	514513.3 / 0075006.0	-	-	-	- / FL080	-	-
RNAV 1	TF	LORLA	515613.6 / 0081151.4	Fly-By	17.4	309.4 / 313	-	-	-
RNAV 1	TF	KOTEX	515355.9 / 0081901.7	Fly-By	5.0	242.7 / 246	3000 / 3000	-	-

ERTER1H CAT A/B STAR RWY25
ERTE1H

Navigation Performance	Path Terminator	WPT Name	Latitude (N), Longitude (W)	Fly-By or Fly-Over	Distance (NM)	True track / Magnetic track	Upper limit / Lower limit	Speed Limit (kts)	Remarks
RNAV 1	IF	ERTER	513343.3 / 0080336.8	-	-	-	- / FL080	-	-
RNAV 1	TF	NONSI	515001.1 / 0080639.8	Fly-By	16.4	353.4 / 357	- / 6000	-	-
RNAV 1	TF	LORLA	515613.6 / 0081151.4	Fly-By	7.0	332.7 / 336	-	-	-
RNAV 1	TF	KOTEX	515355.9 / 0081901.7	Fly-By	5.0	242.7 / 246	3000 / 3000	-	-

GOTEM1H CAT A/B STAR RWY25
GOTE1H

Navigation Performance	Path Terminator	WPT Name	Latitude (N), Longitude (W)	Fly-By or Fly-Over	Distance (NM)	True track / Magnetic track	Upper limit / Lower limit	Speed Limit (kts)	Remarks
RNAV 1	IF	GOTEM	514926.0 / 0074912.1	-	-	-	- / FL080	-	-
RNAV 1	TF	LORLA	515613.6 / 0081151.4	Fly-By	15.6	296.0 / 300	-	-	-
RNAV 1	TF	KOTEX	515355.9 / 0081901.7	Fly-By	5.0	242.7 / 246	3000 / 3000	-	-

KURUM1H CAT A/B STAR RWY25
KURU1H

Navigation Performance	Path Terminator	WPT Name	Latitude (N), Longitude (W)	Fly-By or Fly-Over	Distance (NM)	True track / Magnetic track	Upper limit / Lower limit	Speed Limit (kts)	Remarks
RNAV 1	IF	KURUM	521343.1 / 0083952.5	-	-	-	-	-	-
RNAV 1	TF	MAZAN	520225.9 / 0081704.4	Fly-By	18.0	128.7 / 132	- / 6000	-	-
RNAV 1	TF	LORLA	515613.6 / 0081151.4	Fly-By	7.0	152.5 / 156	-	-	-
RNAV 1	TF	KOTEX	515355.9 / 0081901.7	Fly-By	5.0	242.7 / 246	3000 / 3000	-	-

ORTOM1H CAT A/B STAR RWY25
ORTO1H

Navigation Performance	Path Terminator	WPT Name	Latitude (N), Longitude (W)	Fly-By or Fly-Over	Distance (NM)	True track / Magnetic track	Upper limit / Lower limit	Speed Limit (kts)	Remarks
RNAV 1	IF	ORTOM	511614.9 / 0081757.7	-	-	-	- / FL080	-	-
RNAV 1	TF	NONSI	515001.1 / 0080639.8	Fly-By	34.5	011.7 / 016	- / 6000	-	-
RNAV 1	TF	LORLA	515613.6 / 0081151.4	Fly-By	7.0	332.7 / 336	-	-	-
RNAV 1	TF	KOTEX	515355.9 / 0081901.7	Fly-By	5.0	242.7 / 246	3000 / 3000	-	-

SOVIX1H CAT A/B STAR RWY25
SOVI1H

Navigation Performance	Path Terminator	WPT Name	Latitude (N), Longitude (W)	Fly-By or Fly-Over	Distance (NM)	True track / Magnetic track	Upper limit / Lower limit	Speed Limit (kts)	Remarks
RNAV 1	IF	SOVIX	512539.1 / 0083345.6	-	-	-	- / FL080	-	-
RNAV 1	TF	NONSI	515001.1 / 0080639.8	Fly-By	29.7	034.5 / 038	- / 6000	-	-
RNAV 1	TF	LORLA	515613.6 / 0081151.4	Fly-By	7.0	332.7 / 336	-	-	-
RNAV 1	TF	KOTEX	515355.9 / 0081901.7	Fly-By	5.0	242.7 / 246	3000 / 3000	-	-

TISMO1H CAT A/B STAR RWY25
TISM1H

Navigation Performance	Path Terminator	WPT Name	Latitude (N), Longitude (W)	Fly-By or Fly-Over	Distance (NM)	True track / Magnetic track	Upper limit / Lower limit	Speed Limit (kts)	Remarks
RNAV 1	IF	TISMO	520804.8 / 0080047.4	-	-	-	- / FL080	-	-
RNAV 1	TF	LORLA	515613.6 / 0081151.4	Fly-By	13.7	210.0 / 214	-	-	-
RNAV 1	TF	KOTEX	515355.9 / 0081901.7	Fly-By	5.0	242.7 / 246	3000 / 3000	-	-

VAPAL1H CAT A/B STAR RWY25
VAPA1H

Navigation Performance	Path Terminator	WPT Name	Latitude (N), Longitude (W)	Fly-By or Fly-Over	Distance (NM)	True track / Magnetic track	Upper limit / Lower limit	Speed Limit (kts)	Remarks
RNAV 1	IF	VAPAL	515243.1 / 0074918.3	-	-	-	- / FL080	-	-
RNAV 1	TF	LORLA	515613.6 / 0081151.4	Fly-By	14.4	284.3 / 288	-	-	-
RNAV 1	TF	KOTEX	515355.9 / 0081901.7	Fly-By	5.0	242.7 / 246	3000 / 3000	-	-

Hold Identification – EICK AD 2.24-17

Hold Fix	Latitude (N) / Longitude (W)	Inbound True Track (degrees)	Inbound Mag Track (degrees)	Maximum Indicated Airspeed (kts)	Maximum / Minimum Holding Altitude / Level (FL/ft)	Outbound Time (min)	Direction of Turn
KOTEX	515355.9 / 0081901.7	242.7	246	-	FL080/3000	1	L