

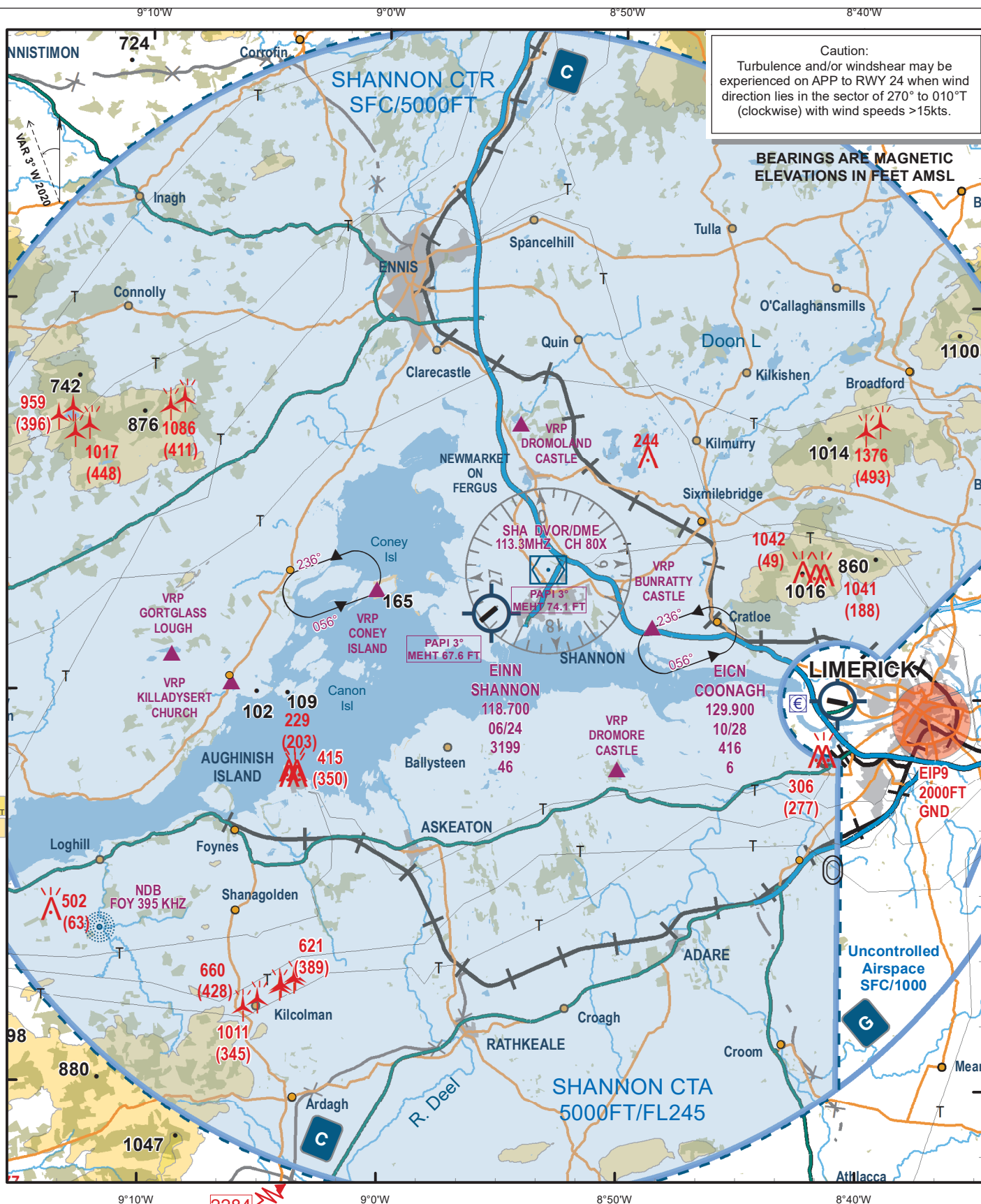
VISUAL APPROACH CHART - ICAO

AERODROME ELEV. 46 FT

TWR 118.700 RADAR 121.400  
ATIS 130.950 GND 121.800  
APP 121.400

CONSULT NOTAM FOR LATEST INFORMATION

SHANNON / SHANNON



Caution:  
Turbulence and/or windshear may be experienced on APP to RWY 24 when wind direction lies in the sector of 270° to 010°T (clockwise) with wind speeds >15kts.

BEARINGS ARE MAGNETIC ELEVATIONS IN FEET AMSL

CHANGE: Magnetic Variation, Obstacles, ENS NDB Removed, Holding Bearings, New Hold at Cooney Island, Fennish VRP Removed, RWY 13/31 Disused, New VRP's-Dromore Castle & Killadysert Church and Note 1.

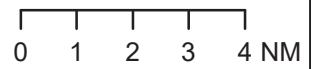


Visual Holding Pattern (Based on TAS 120 kts)

Coney Island 52°42' 43.34"N 009°00' 20.70"W  
Bunratty Castle 52°41' 48.80"N 008°48' 44.28"W

Note 1: In the event of a radio failure:  
- Aircraft from the West route to the Coney Island Hold  
- Aircraft from the East route to the Bunratty Castle Hold  
to receive landing instructions from the Control Tower using the ALDIS lamp.

2284 Highest obstacle offchart encompassing the CTR



Based on Ordnance Survey Ireland by permission of the Government Permit 7109