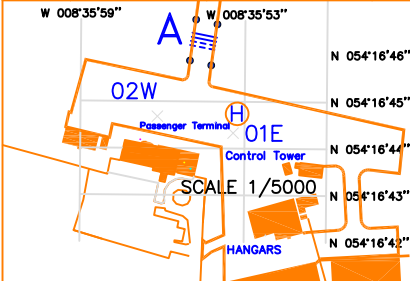


AERODROME CHART - ICAO 54 16 48.77 N AERODROME ELEV 15FT TWR 122.1 CONSULT NOTAM FOR LATEST INFORMATION
 008 35 57.15 W APRON ELEV 20FT GND 122.1

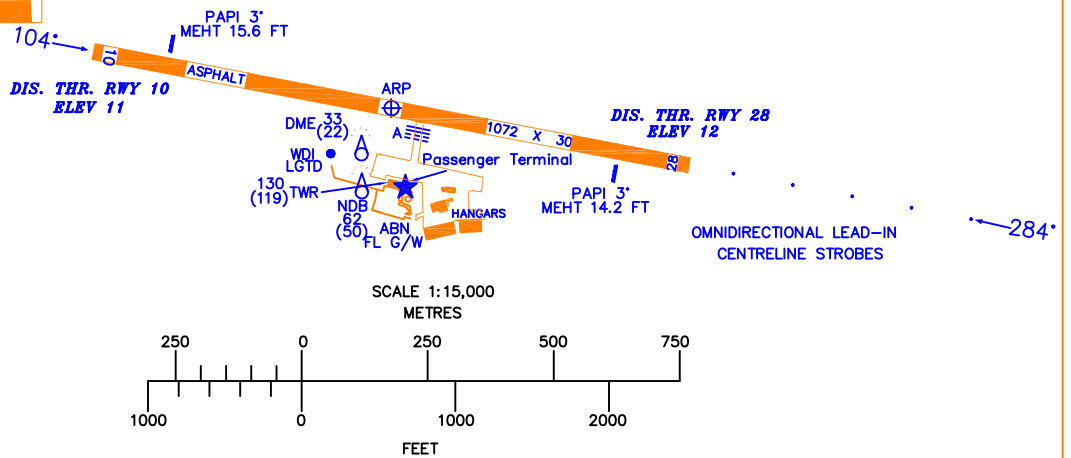
SLIGO AIRPORT/ IRELAND

RWY	DIRECTION	THR		BEARING STRENGTH	LEGEND	
					AIRCRAFT STAND	
10	104°	54 16 51.91 N	008 36 26.51 W	PCN 23/F/B/Y/T	AIRCRAFT STAND	1
28	284°	54 16 45.68 N	008 35 28.18 W		RUNWAY HOLDING POSITION MARKING	



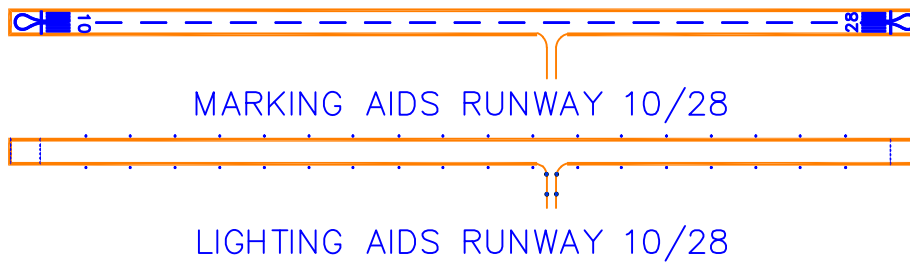
VAR 3° W 2021
 ANNUAL RATE OF CHANGE - 11' W

BEARINGS ARE MAGNETIC.
 LINEAR DIMENSIONS IN METRES.
 ELEVATIONS IN FEET AMSL.
 HEIGHTS IN FEET ABOVE AERODROME ELEVATION SHOWN IN BRACKETS.



AMENDMENT RECORD		
NO.	DATE	ENTERED BY

SCALE 1:10,000



Stand	Latitude	Longitude	Max Wingspan	Max Length	Conditions
01E	54 16 44.33 N	008 35 53.42 W	-	-	Self Manoeuvring.
02W	54 16 44.68 N	008 35 56.19 W	-	-	Self Manoeuvring.

- NOTE 1: TAXIWAY A : PCN 19/F/C/Y/T.
- NOTE 2: APRON : PCN 23/F/B/Y/T.
- NOTE 3: TAXIWAY A : 14M WIDE.
- NOTE 4: RTILS located beside Rwy 10 threshold flashing every 1.2 seconds omnidirectional.
- NOTE 5: Sequential Strobe with RTILS located beside Rwy 28 threshold flashing every 1.2 seconds omnidirectional.
- NOTE 6: Helicopter landing area on the east side of the apron.

CHANGES: General Revision