

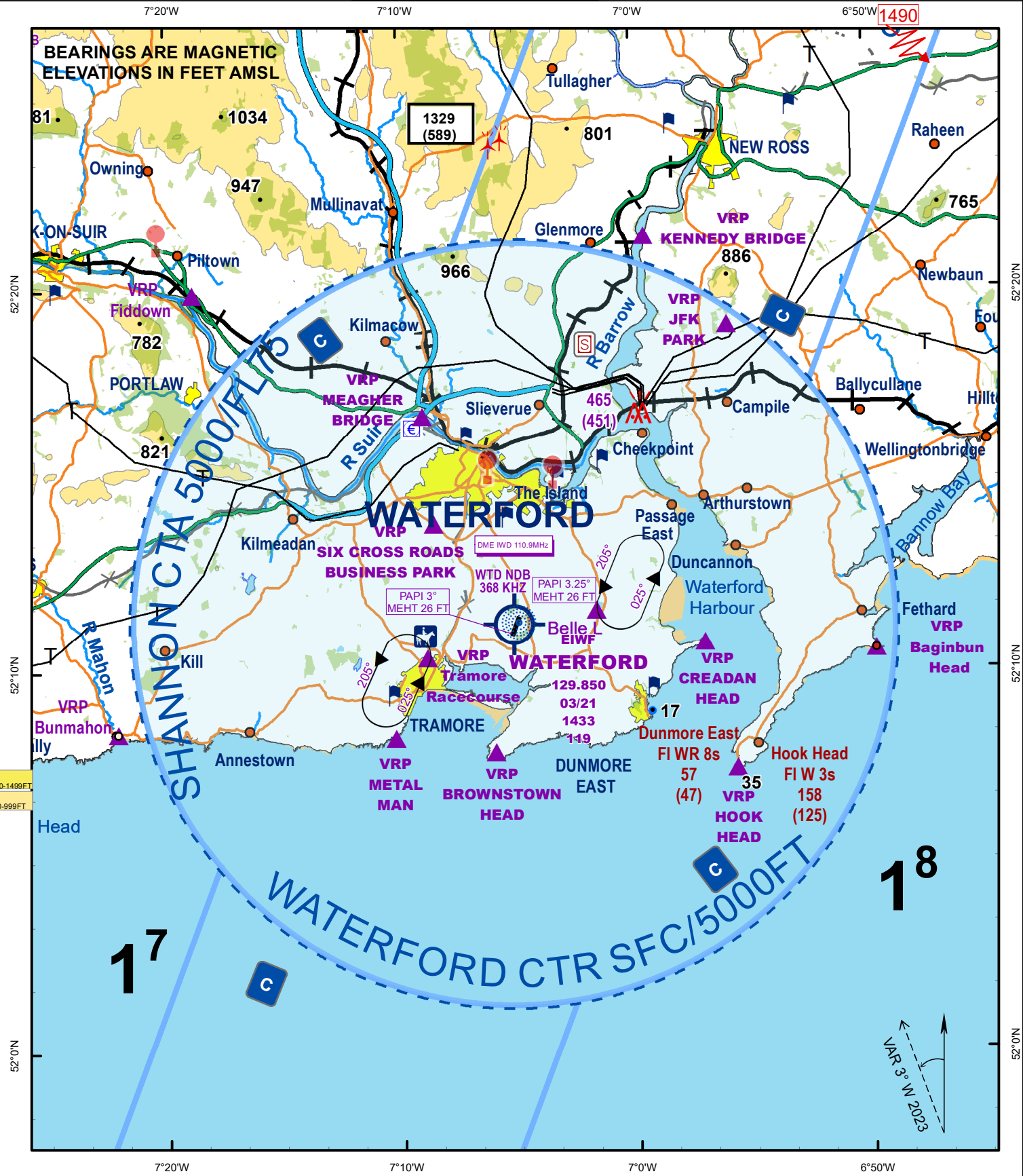
VISUAL APPROACH CHART - ICAO

AERODROME ELEV. 119 FT

TWR 129.850  
AFIS 129.850 (Check NOTAM's for hours of operation)  
ATIS 121.150  
EMERGENCY 121.500

CONSULT NOTAM FOR LATEST INFORMATION

WATERFORD / WATERFORD



Note 1: In the event of a radio failure:  
 - Aircraft from the East route via Baginbun Head not above 1500 FT to the Belle Lake Hold  
 - Aircraft from the West route via Bunmahon not above 1500 FT to the Tramore Racecourse Hold  
 to receive landing instructions from the Control Tower using the ALDIS lamp.

**SCALE 1:250,000**  
**Datum: Malin Head**

1490 Highest obstacle offchart encompassing the CTR  
 Sensitive Areas

0 1 2 3 4 NM

Belle Lake 52°11' 35.56"N 007°01' 42.64"W  
 Tramore 52°10' 21.65"N 007°08' 55.62"W

Based on Ordnance Survey Ireland by permission of the Government Permit 7109

CHANGES: GENERAL REVISION AND FREQUENCIES