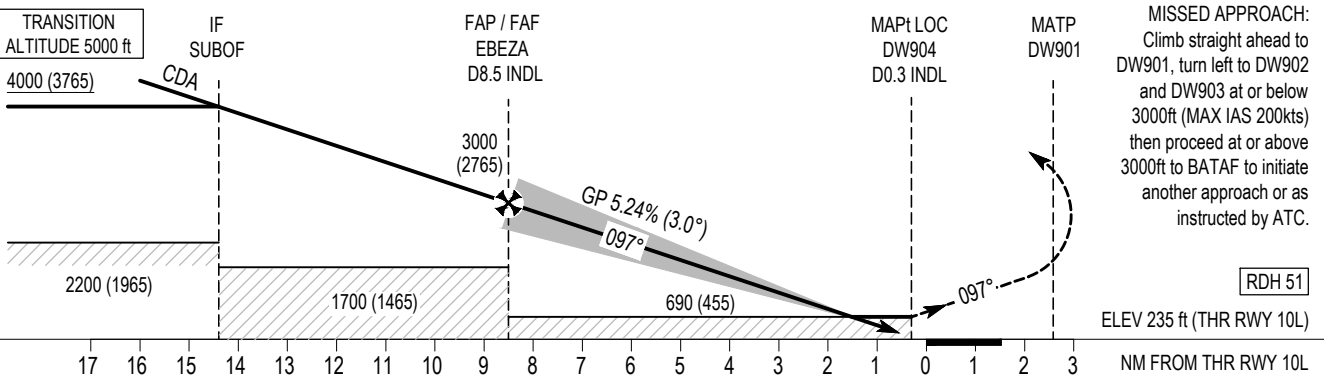
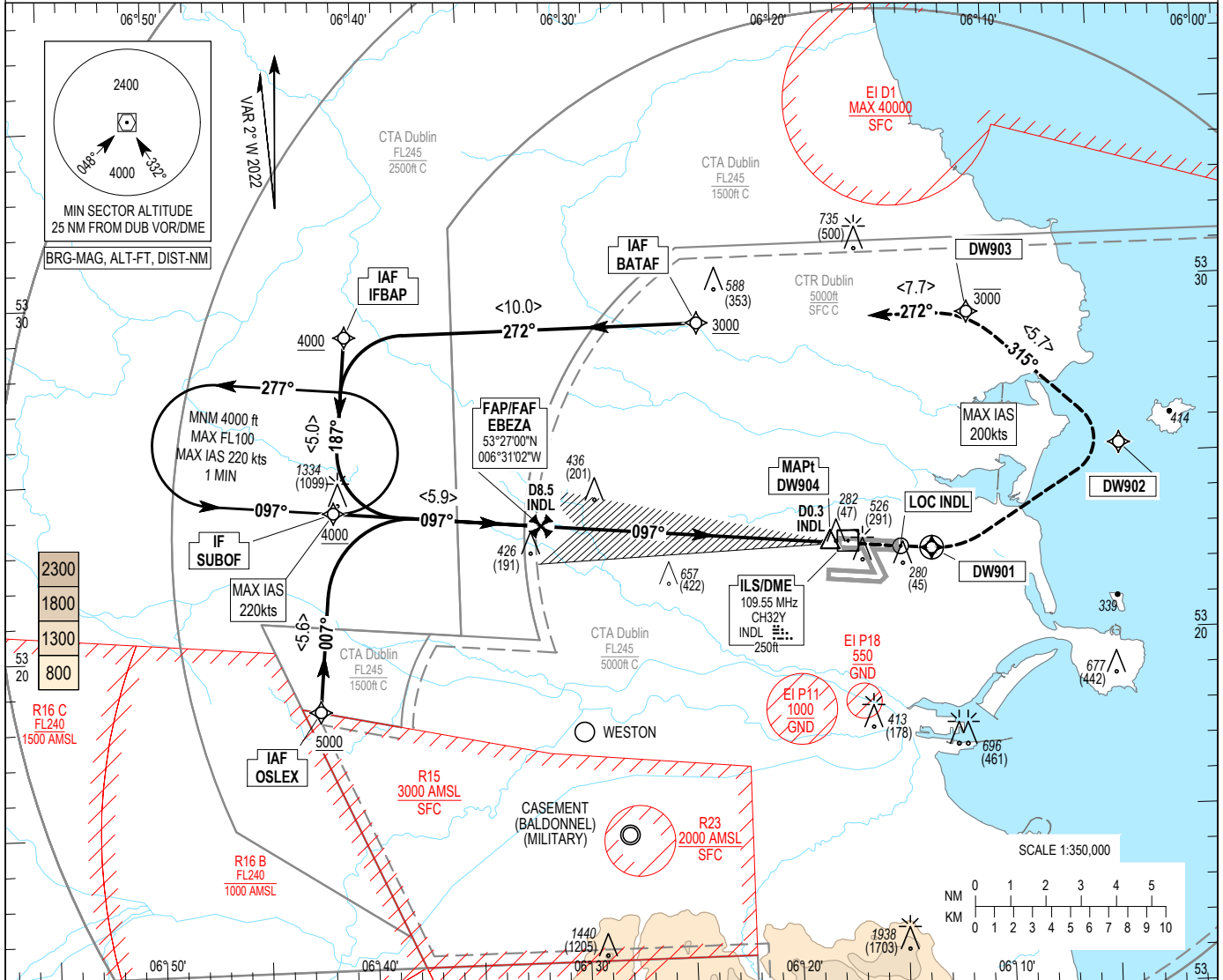


INSTRUMENT
APPROACH
CHART- ICAO

AERODROME ELEV 242 ft
HEIGHTS RELATED TO
THR RWY 10L - ELEV 235 ft

ATIS ARR 124.530
APP 121.100
FINALS 119.930
TWR NTH 124.680
GND NTH 125.885

DUBLIN/DUBLIN
ILS CAT I and II or LOC RWY 10L
(ACFT CAT A, B, C, D)



OCA (H)		A	B	C	D
Straight-in Approach	CAT I	384 (149)	395 (160)	402 (167)	413 (178)
	CAT II	301 (66)	313 (78)	324 (89)	339 (104)
	LOC	690 (455)			
Visual Manoeuvring (Heights AAL)		830 (588)		1100 (858)	

Recommended LOC Profile on Final Approach								
DIST from THR (NM)	8	7	6	5	4	3	2	
ALT / HT (ft)	2830 (2595)	2515 (2280)	2195 (1960)	1875 (1640)	1560 (1325)	1240 (1005)	920 (685)	
Ground Speed	kts		80	100	110	120	140	160
Descent rate gradient - 5.2% (3.0°) 318 ft/NM	ft / min		430	530	580	640	740	850

NOTE:
 1. DME required for LOC approach.
 2. Timing not authorised for determining the MAPt.
 3. ILS/DME reads zero at THR RWY 10L.

CHANGE: Speed restriction at SUBOF, Missed Approach depiction, GND NTH Frequency and Verso page.

Dublin INITIAL APP ILS RWY 10L via BATAF

Nav. Spec.	WPT Name	Latitude (N) / Longitude (W)	Path Term	Fly-By Fly-over	True track / Mag track	Distance (NM)	Upper limit / Lower limit	Speed Limit (kts)	Remarks
RNAV 1	BATAF	532336.0 / 0062320.5	IF	Fly-By	-	-	- / +A3000	-	IAF
RNAV 1	IFBAP	532330.8 / 0064006.2	TF	Fly-By	269.6 / 272	10.0	- / +A4000	-	IAF
RNAV 1	SUBOF	532732.5 / 0064052.5	TF	Fly-By	185.3 / 187	5.0	- / +A4000	220	IF, Turn L

Dublin INITIAL APP ILS RWY 10L via OSLEX

Nav. Spec.	WPT Name	Latitude (N) / Longitude (W)	Path Term	Fly-By Fly-over	True track / Mag track	Distance (NM)	Upper limit / Lower limit	Speed Limit (kts)	Remarks
RNAV 1	OSLEX	532155.8 / 0064144.5	IF	Fly-By	-	-	- / +A5000	-	IAF
RNAV 1	SUBOF	532732.5 / 0064052.5	TF	Fly-By	005.3 / 007	5.6	- / +A4000	220	IF

Dublin INITIAL APP ILS RWY 10L via IFBAP

Nav. Spec.	WPT Name	Latitude (N) / Longitude (W)	Path Term	Fly-By Fly-over	True track / Mag track	Distance (NM)	Upper limit / Lower limit	Speed Limit (kts)	Remarks
RNAV 1	IFBAP	532330.8 / 0064006.2	IF	Fly-By	-	-	- / +A4000	-	IAF
RNAV 1	SUBOF	532732.5 / 0064052.5	TF	Fly-By	185.3 / 187	5.0	- / +A4000	220	IF

Dublin ILS CAT I and II or LOC Approach RWY 10L

Descent Angle:	3.00	
Fix	FAF/FAP EBEZA (D8.5 INDL)	MAPt DW904 (D0.3 INDL)
Fix Coordinates	532700.2 N 0063102.2 W	532615.5 N 0061721.2 W
Fix Formation Bearing T	275.34 LOC INDL	275.30 LOC INDL
Fix Formation Distances	8.53 INDL	0.31 INDL

Dublin MISSED APP ILS RWY 10L

Nav. Spec.	WPT Name	Latitude (N) / Longitude (W)	Path Term	Fly-By Fly-over	True track / Mag track	Distance (NM)	Upper limit / Lower limit	Speed Limit (kts)	Remarks
RNAV 1	DW901	532600.2 / 0061233.4	CF	Fly-Over	095.0 / 097	-	-	200	082 DAP / D3.4 DAP
RNAV 1	DW902	532846.7 / 0060330.3	DF	Fly-By	-	-	-	200	Turn L
RNAV 1	DW903	533238.5 / 0061030.2	TF	Fly-By	312.8 / 315	5.7	-A3000 / -	200	Turn L
RNAV 1	BATAF	532336.0 / 0062320.5	TF	Fly-By	269.8 / 272	7.7	- / +A3000	-	Turn L, IAF

Hold Identification – SUBOF

Holding Fix	Latitude (N) / Longitude (W)	Inbound True Track (degrees)	Inbound Mag Track (degrees)	Maximum Indicated Airspeed (kts)	Minimum Holding Altitude/ Level (FL/ft)	Maximum Holding Altitude/ Level (FL/ft)	Outbound time (min)	Direction of Turn
SUBOF	532732.5 / 0064052.5	095.09	097	220	+A4000	-FL100	1	L