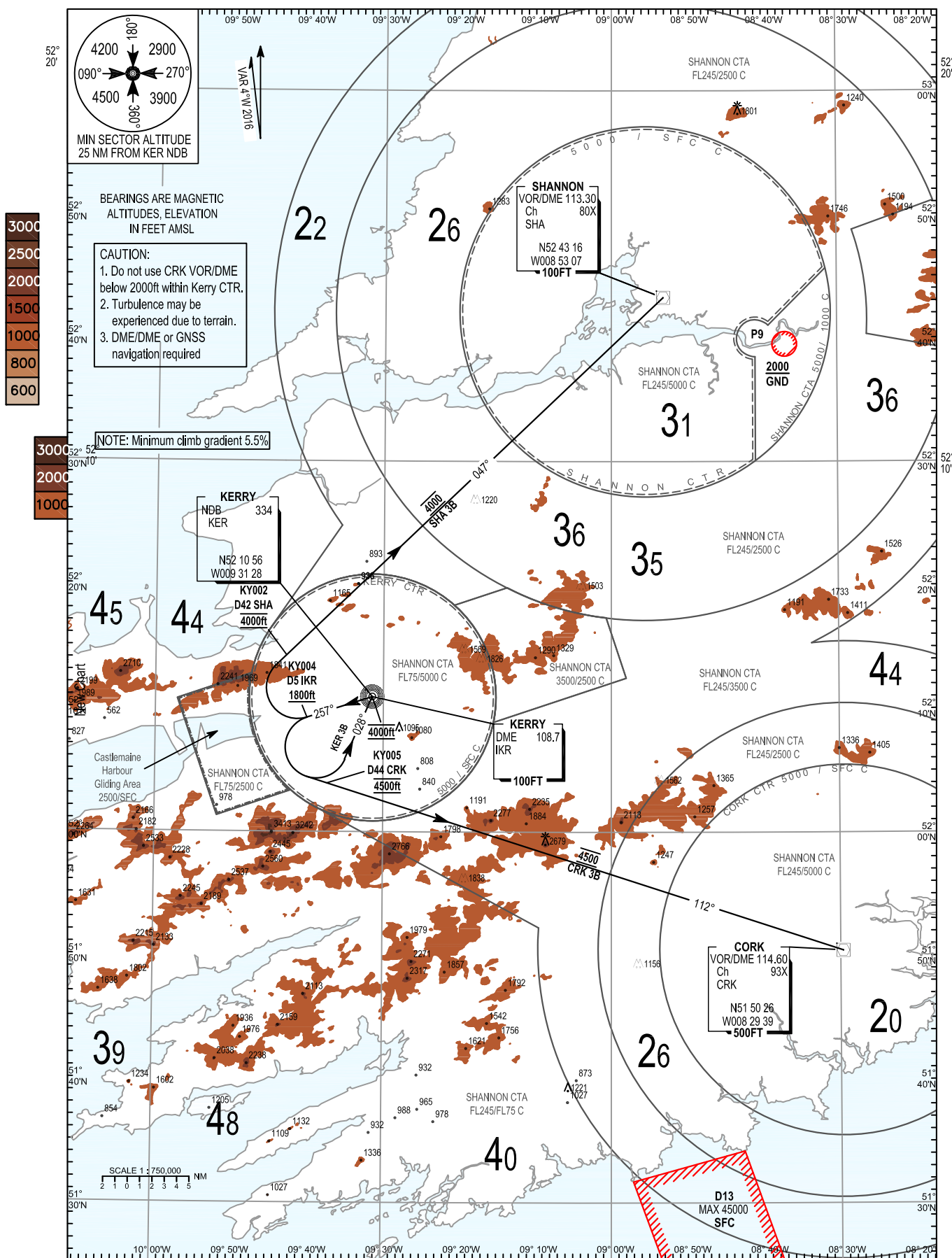


AIP IRELAND
STANDARD DEPARTURE CHART
INSTRUMENT (SID) ICAO

TRANS ALT 5000FT
TRANS LEVEL by ATC

Kerry TWR	123.325
Kerry GND	121.600
Shannon Control	124.700
ATIS	118.025

KERRY RWY 26
CAT C
SHA 3B, CRK 3B, KER 3B



BEARINGS ARE MAGNETIC
ALTITUDES, ELEVATION
IN FEET AMSL

CAUTION:
1. Do not use CRK VOR/DME
below 2000ft within Kerry CTR.
2. Turbulence may be
experienced due to terrain.
3. DME/DME or GNSS
navigation required

NOTE: Minimum climb gradient 5.5%



CHANGE: Caution Note 3 added

SHA 3B CAT C SID RWY26

SHA3B

Navigation Performance	Path Terminator	WPT Name	Latitude (N), Longitude (W)	Fly-By or Fly-over	Distance (NM)	True Track/ Magnetic Track	Upper limit/ Lower Limit	Speed Limit (kts)	Remarks
RNAV1	CF	RWY26	-	-	-	252.2/ 257	-	-	-
RNAV1	CF	KY004	520913.8 0094002.5	Fly-Over	5.0	252.2/ 257	-4000/ +1800	-	-
RNAV1	CF	KY002	521219.1/ 0093928.2	Fly-By	1.0	042.1/ 047	4000	-	R
RNAV1	TF	SHA	524315.6/ 0085306.8	Fly-By	42.0	042.2/ 047	4000	-	-

CRK 3B CAT C SID RWY26

CRK3B

Navigation Performance	Path Terminator	WPT Name	Latitude (N), Longitude (W)	Fly-By or Fly-over	Distance (NM)	True Track/ Magnetic Track	Upper limit/ Lower Limit	Speed Limit (kts)	Remarks
RNAV1	CF	RWY26	-	-	-	252.2/ 257	-	-	-
RNAV1	CF	KY004	520913.8 0094002.5	Fly-Over	5.0	252.2/ 257	-4500/ +1800	-	-
RNAV1	CF	KY005	520354.9/ 0093720.8	Fly-By	1.7	107.4/ 112	4500	-	L
RNAV1	TF	CRK	515026.2/ 0082939.4	Fly-By	44.0	107.4/ 112	4500	-	-

KER 3B CAT C SID RWY26

KER3B

Navigation Performance	Path Terminator	WPT Name	Latitude (N), Longitude (W)	Fly-By or Fly-over	Distance (NM)	True Track/ Magnetic Track	Upper limit/ Lower Limit	Speed Limit (kts)	Remarks
RNAV1	CF	RWY26	-	-	-	252.2/ 257	-	-	-
RNAV1	CF	KY004	520913.8 0094002.5	Fly-Over	5.0	252.2/ 257	-4000/ +1800	-	-
RNAV1	CF	KER	521055.8/ 0093128.2	Fly-By	4.5	023.5/ 028	4000	-	L