

INSTRUMENT APPROACH CHART - ICAO

AERODROME ELEV 112 ft  
HEIGHTS RELATED TO THR RWY 26 - ELEV 112 ft

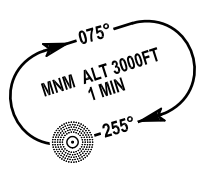
Kerry TWR	123.325
Kerry GND	121.600
Shannon Control	124.700
ATIS	118.025

CONSULT NOTAM FOR LATEST INFORMATION

KERRY / KERRY  
NDB RWY 26  
(ACFT CAT A,B,C)

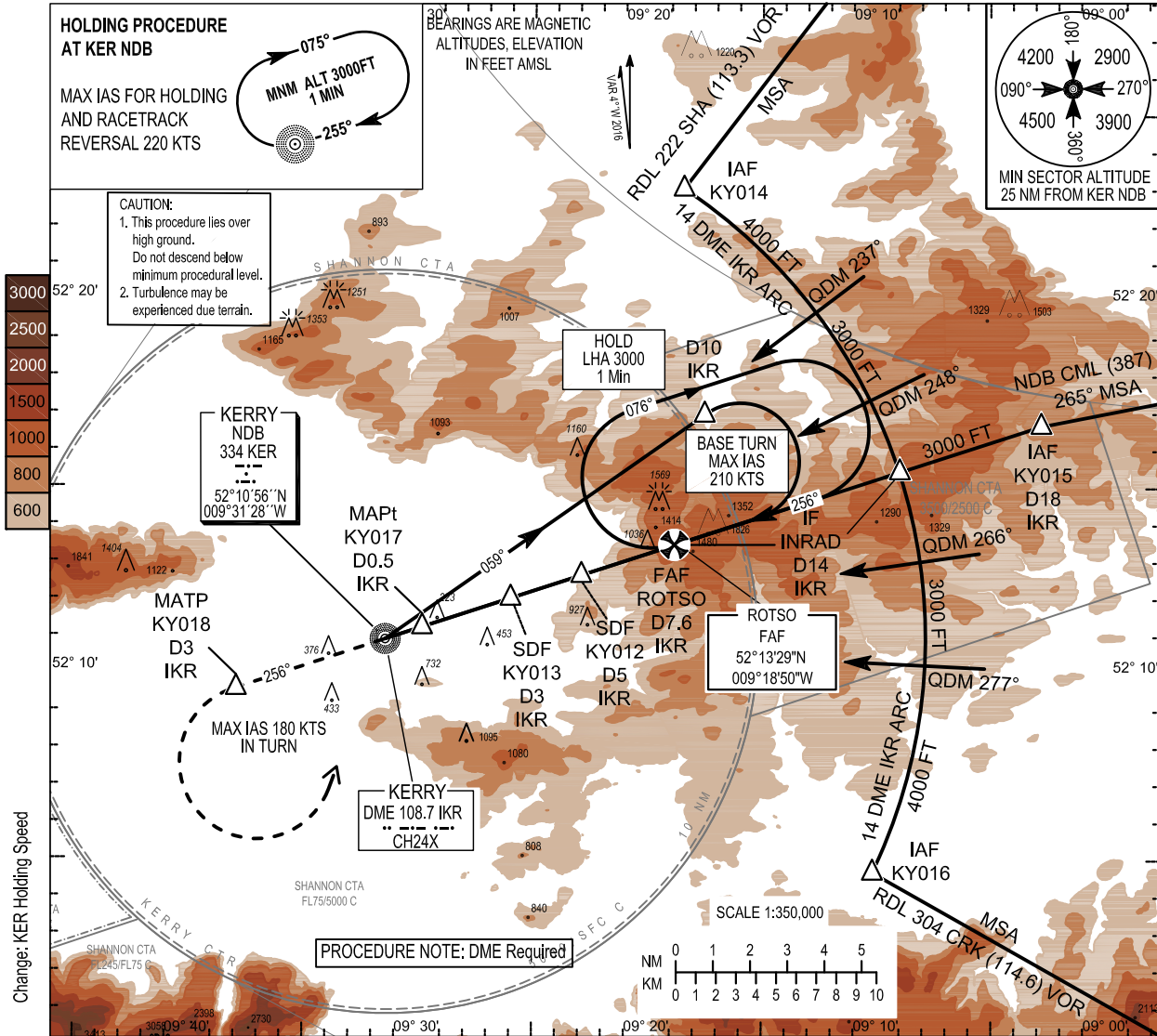
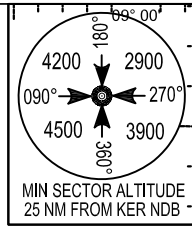
**HOLDING PROCEDURE AT KER NDB**

MAX IAS FOR HOLDING AND RACETRACK REVERSAL 220 KTS



**CAUTION:**  
1. This procedure lies over high ground. Do not descend below minimum procedural level.  
2. Turbulence may be experienced due terrain.

BEARINGS ARE MAGNETIC ALTITUDES, ELEVATION IN FEET AMSL



Change: KER Holding Speed

PROCEDURE NOTE: DME Required

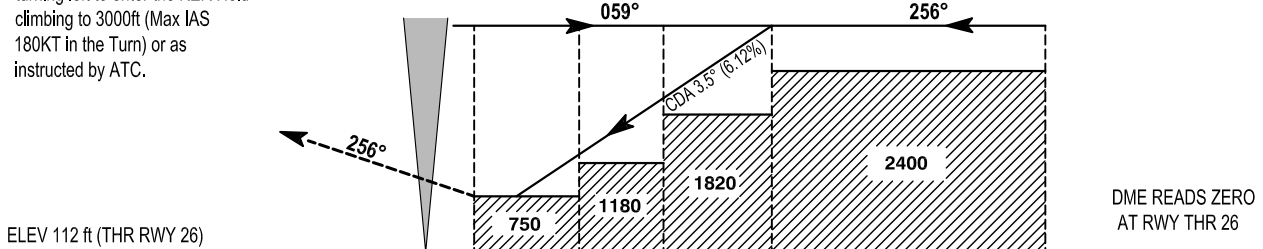
SCALE 1:350,000



**MISSED APPROACH:**  
Climb straight ahead to 3000ft, turning left to enter the KER Hold climbing to 3000ft (Max IAS 180KT in the Turn) or as instructed by ATC.

IAF KER NDB 3000ft	MAPt KY017 D0.5 IKR 750ft	SDF KY013 D3 IKR 1280ft	SDF KY012 D5 IKR 2020ft	ROTSO FAF D7.6 IKR 3000ft	INRAD IF D14 IKR 3000ft
--------------------------	------------------------------------	----------------------------------	----------------------------------	------------------------------------	----------------------------------

TRANSITION ALTITUDE 5000 ft



ELEV 112 ft (THR RWY 26)

7 6 5 4 3 2 1 0 1 2 3 4 5 6 7 8 9 10 11 12 13 14 15 16 17 18														
NM FROM THR RWY 26														
OCA (H)	A B C	NOTE: INSTRUMENT APPROACHES ONLY AVAILABLE WHEN AIR TRAFFIC CONTROL ZONE IS ACTIVE UNLESS AUTHORIZED BY THE OPERATING STANDARDS DEPARTMENT OF THE IAA.												
Straight-in Approach	750 (638)			Recommended Profile in Final Approach										
	DME (NM)	7.0	6.0	5.0	4.0	3.0								
Visual Manoeuvring (These heights are AAL)	Total Area	1040 (928)	1140 (1028)	1490 (1378)	ALT / HT (ft)	2760/2648	2390/2278	2020/1908	1650/1538	1280/1168				
	North of RWY only	750 (638)	750 (638)	920 (808)	Ground Speed	kts			70	90	100	110	120	140
	Descent Rate Gradient - 6.12%, (3.5°)		ft / min		430	560	620	680	740	870				

**RWY26 NDB Approach**

Descent Angle:	3.50 - 6.12%							
Fix	KY014 IAF	KY015 IAF	KY016 IAF	INRAD IF	ROTSO FAF	KY012 SDF	KY013 SDF	KY018 MATP
Fix co-ords	522303.3N 0091827.5W	521640.6N 0090247.1W	520441.4N 0091009.9W	521528.8N 0090901.3W	521329.3N 0091850.6W	521239.6N 0092254.3W	521202.2N 0092559.7W	520948.2N 0093655.9W
Fix formation Bearing °T	213.43 KER	252.12 KER	295.59 KER	252.03 KER	251.83 KER	251.84 KER	251.81 KER	071.42 KER
Fix Formation Distances	14.00 IKR	18.00 IKR	14.00 IKR	14.00 IKR	7.60 IKR	5.00 IKR	3.00 IKR	3.00 IKR

**Holding Identification: EIKY AD 2.24-9**

<i>Holding Fix</i>	<i>Latitude (N), Longitude (W)</i>	<i>Inbound True Track °T</i>	<i>Inbound Magnetic Track °M</i>	<i>Max Indicated Airspeed NM/h</i>	<i>Maximum/ Minimum Holding Altitude/Level</i>	<i>Distance outbound (NM)</i>	<i>Direction of Turn</i>
NDB KER	521055.8, 0093128.2	250.5	255	220	FL100/ 3000ft	3.7	R
ROTSO	521329.3, 0091850.6	252.1	256	240	FL100/ 3000ft	4.1	R