

INSTRUMENT APPROACH CHART - ICAO

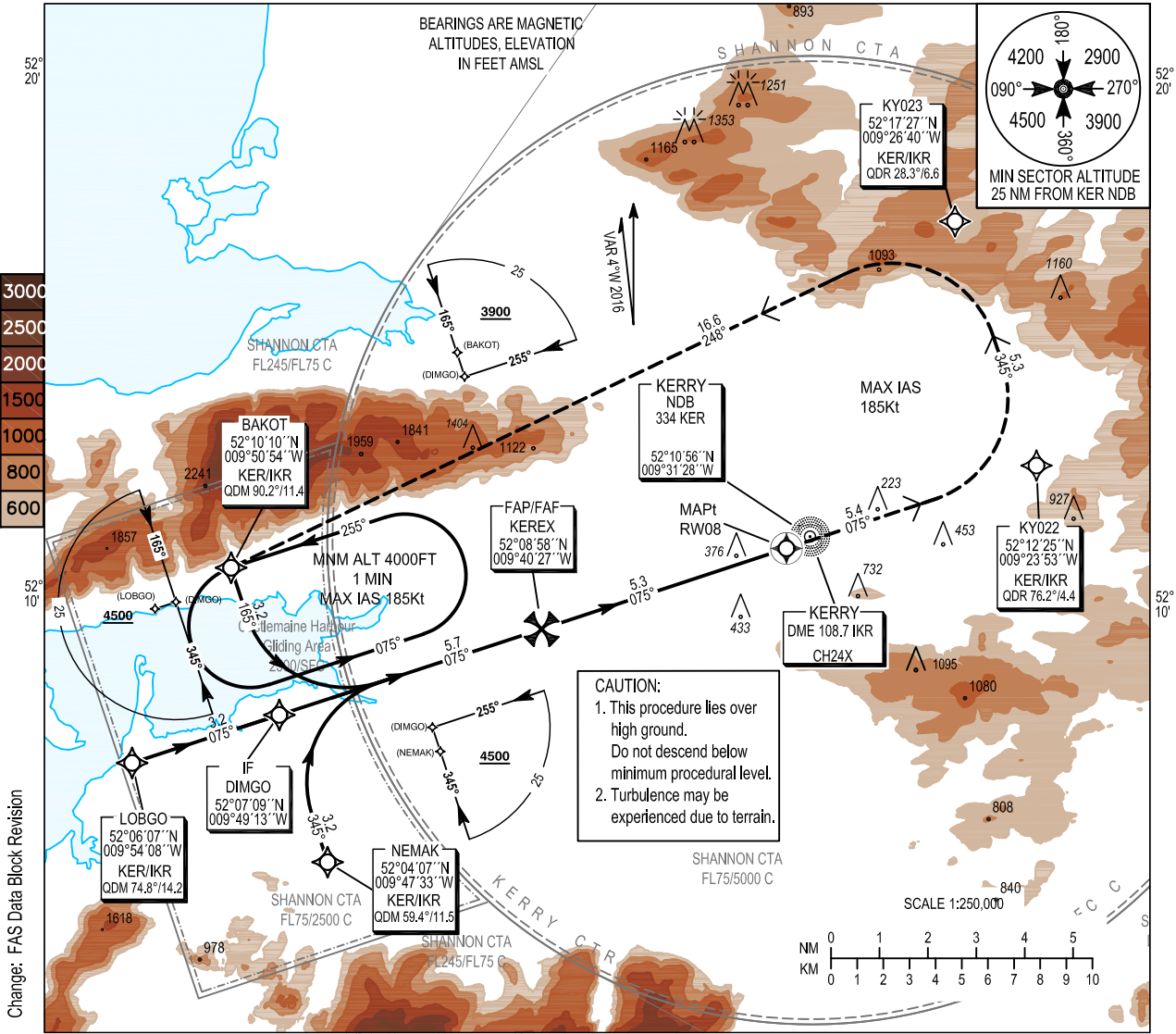
AERODROME ELEV 112 ft
 HEIGHTS RELATED TO THR RWY 08 - ELEV 82 ft

SBAS
 CH 94403
 E08A

Kerry TWR 123.325
 Kerry GND 121.600
 Shannon Control 124.700
 ATIS 118.025

CONSULT NOTAM FOR LATEST INFORMATION

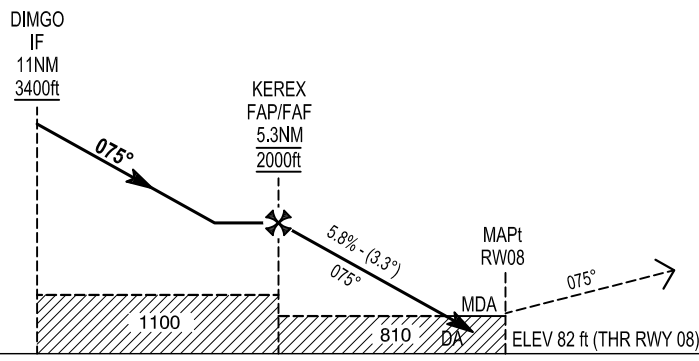
KERRY / KERRY
RNP RWY 08
 (ACFT CAT A,B,C)
 MNM TEMP -10°C (BARO VNAV)
 Effective VPA >3.5° TEMP 32° (BARO VNAV)



Change: FAS Data Block Revision

CAUTION:
 1. This procedure lies over high ground.
 Do not descend below minimum procedural level.
 2. Turbulence may be experienced due to terrain.

TRANSITION ALTITUDE 5000 ft



MISSED APPROACH :
 At the MAPt, climb extended centreline to KY022, then turn left (MAX IAS 185Kts.) to KY023 continuing climb to 4000 FT to enter the BAKOT hold or as instructed by ATC.

OCA (H)		A	B	C
LNAV / VNAV (MACG 2.5%)		727 (645)	737 (655)	750 (668)
LNAV / VNAV (MACG 3%)		527 (445)	537 (455)	550 (468)
LNAV (MACG 2.5%)		810 (728)		
LNAV (MACG 3%)		700 (618)		
LPV (MACG 2.5%)		490 (408)	500 (418)	577 (495)
LPV (MACG 3%)		400 (318)	410 (328)	471 (389)
Visual Manoeuvring (These heights are AAL)	Total Area	1040 (928)	1150 (1038)	1490 (1378)
	North of RWY only	810 (698)	810 (698)	1040 (928)

CAUTION:
 1. This procedure lies over high ground. Do not descend below minimum procedural level.
 2. Turbulence may be experienced due to terrain.

NOTE: INSTRUMENT APPROACHES ONLY AVAILABLE WHEN AIR TRAFFIC CONTROL ZONE IS ACTIVE UNLESS AUTHORIZED BY THE IAA.

Recommended Profile in Final Approach to MAPt (RW08)

DIST RW08 (NM)	5.0	4.0	3.0	2.0	1.0			
ALT / HT (ft)	1885/1803	1535/1453	1180/1098	830/748	480/398			
Ground Speed	kts		70	90	100	110	120	140
Descent Rate Gradient - 5.8%, (3.3°)	ft / min		410	530	580	640	700	820

Navigation Performance	Path Terminator	WPT Name	Latitude (N) / Longitude (W)	Fly-By or Fly-Over	Distance (NM)	True Track / Magnetic Track	Upper Limit / Lower Limit	Speed Limit (kts)	VPA / TCH	Remarks
RNP APCH	IF	NEMAK	520407.1 / 0094733.0	Fly-By	-	-	+4500	-	-	IAF
RNP APCH	TF	DIMGO	520708.7 / 0094913.2	Fly-By	3.2	341.2 / 345	+3400	-	-	IF
RNP APCH	TF	KEREX	520858.3 / 0094027.3	Fly-By	5.7	071.2 / 075	@2000	-	-	FAF
RNP APCH	TF	RW08	521040.8 / 0093215.5	Fly-Over	5.3	071.2 / 075	-	-	3.30 / 49	-
RNP APCH	CF	KY022	521225.4 / 0092352.9	Fly-By	5.4	071.2 / 075	- 4000	185	-	L
RNP APCH	TF	KY023	521727.0 / 0092640.2	Fly-By	5.3	341.2 / 345	- 4000	185	-	L
RNP APCH	TF	BAKOT	521010.3 / 0095053.7	Fly-Over	16.6	244.1 / 248	@4000	185	-	-

Navigation Performance	Path Terminator	WPT Name	Latitude (N) / Longitude (W)	Fly-By or Fly-Over	Distance (NM)	True Track / Magnetic Track	Upper Limit / Lower Limit	Speed Limit (kts)	VPA / TCH	Remarks
RNP APCH	IF	LOBGO	520607.2 / 0095408.3	Fly-By	-	-	+4500	-	-	IAF
RNP APCH	TF	DIMGO	520708.7 / 0094913.2	Fly-By	3.2	071.2 / 075	+3400	-	-	IF
RNP APCH	TF	KEREX	520858.3 / 0094027.3	Fly-By	5.7	071.2 / 075	@2000	-	-	FAF
RNP APCH	TF	RW08	521040.8 / 0093215.5	Fly-Over	5.3	071.2 / 075	-	-	3.30 / 49	-
RNP APCH	CF	KY022	521225.4 / 0092352.9	Fly-By	5.4	071.2 / 075	- 4000	185	-	L
RNP APCH	TF	KY023	521727.0 / 0092640.2	Fly-By	5.3	341.2 / 345	- 4000	185	-	L
RNP APCH	TF	BAKOT	521010.3 / 0095053.7	Fly-Over	16.6	244.1 / 248	@4000	185	-	-

Navigation Performance	Path Terminator	WPT Name	Latitude (N) / Longitude (W)	Fly-By or Fly-Over	Distance (NM)	True Track / Magnetic Track	Upper Limit / Lower Limit	Speed Limit (kts)	VPA / TCH	Remarks
RNP APCH	IF	BAKOT	521010.3 / 0095053.7	Fly-By	-	-	+3900	-	-	IAF
RNP APCH	TF	DIMGO	520708.7 / 0094913.2	Fly-By	3.2	161.2 / 165	+3400	-	-	IF
RNP APCH	TF	KEREX	520858.3 / 0094027.3	Fly-By	5.7	071.2 / 075	@2000	-	-	FAF
RNP APCH	TF	RW08	521040.8 / 0093215.5	Fly-Over	5.3	071.2 / 075	-	-	3.30 / 49	-
RNP APCH	CF	KY022	521225.4 / 0092352.9	Fly-By	5.4	071.2 / 075	- 4000	185	-	L
RNP APCH	TF	KY023	521727.0 / 0092640.2	Fly-By	5.3	341.2 / 345	- 4000	185	-	L
RNP APCH	TF	BAKOT	521010.3 / 0095053.7	Fly-Over	16.6	244.1 / 248	@4000	185	-	-

Holding Identification: EIKY AD 2.24-10

Holding Fix	Latitude (N) / Longitude (W)	Inbound True Track (degrees)	Inbound Magnetic Track (degrees)	Direction of Turn	Maximum Indicated Airspeed (kts)	Maximum / Minimum Holding Level / Altitude (FL/ft)	Distance outbound (NM)
BAKOT	521010.3 / 0095053.7	251.3	255	L	185	FL100 / 4000	3.4

Runway 08 LNAV/VNAV – Procedure unavailable if OAT is less than -10°C unless avionics include approved temperature compensation.

Runway 08 LNAV/VNAV – Note VPA may exceed 3.5° if OAT is higher than 32°C.

SBAS FAS Data Block Coding Data
Kerry RNP RWY 08

Input Data	
Operation Type	0
Service Provider	1
Airport Identifier	EIKY
Runway	08
Runway Direction	0
Approach Performance Designator	0
Route Indicator	
Reference Path Data Selector	0
Reference Path Identifier	E08A
LTP / FTP Latitude	521040.7535N
LTP / FTP Longitude	0093215.4595W
LTP / FTP Ellipsoidal Height	83.9m
FPAP Latitude	521102.1860N
Delta FPAP Latitude	21.4325 seconds
FPAP Longitude	0093032.7915W
Delta FPAP Longitude	102.6980 seconds
Threshold Crossing Height	49
TCH Units Selector	0
Glidepath Angle	3.3 °
Course Width	105.0 m
Length Offset	0 m
HAL	40 m
VAL	50 m

Output Data	
Data Block	10 19 0B 09 05 08 00 00 01 38 30 05 E3 71 64 16 39 2A E8 FB 47 17 71 A7 00 18 22 03 EA 01 4A 01 64 00 C8 FA 16 81 E3 6F
Calculated CRC Value	1681E36F

Required Additional Data (not CRC wrapped)	
ICAO Code	EI
LTP/FTP Orthometric Height	25.10 m
FPAP Orthometric Height (metres)	34.10
SBAS EGNOS Channel	94403