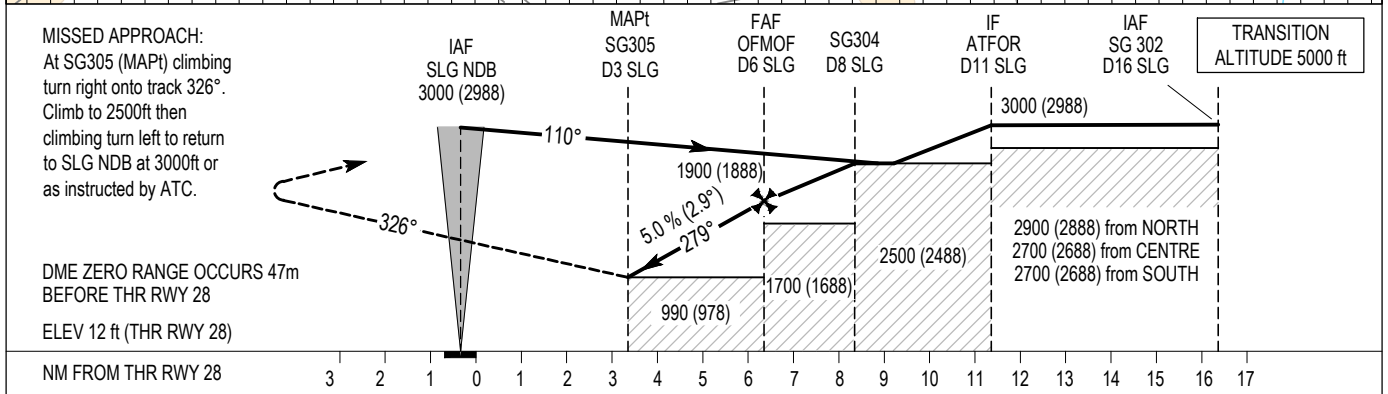
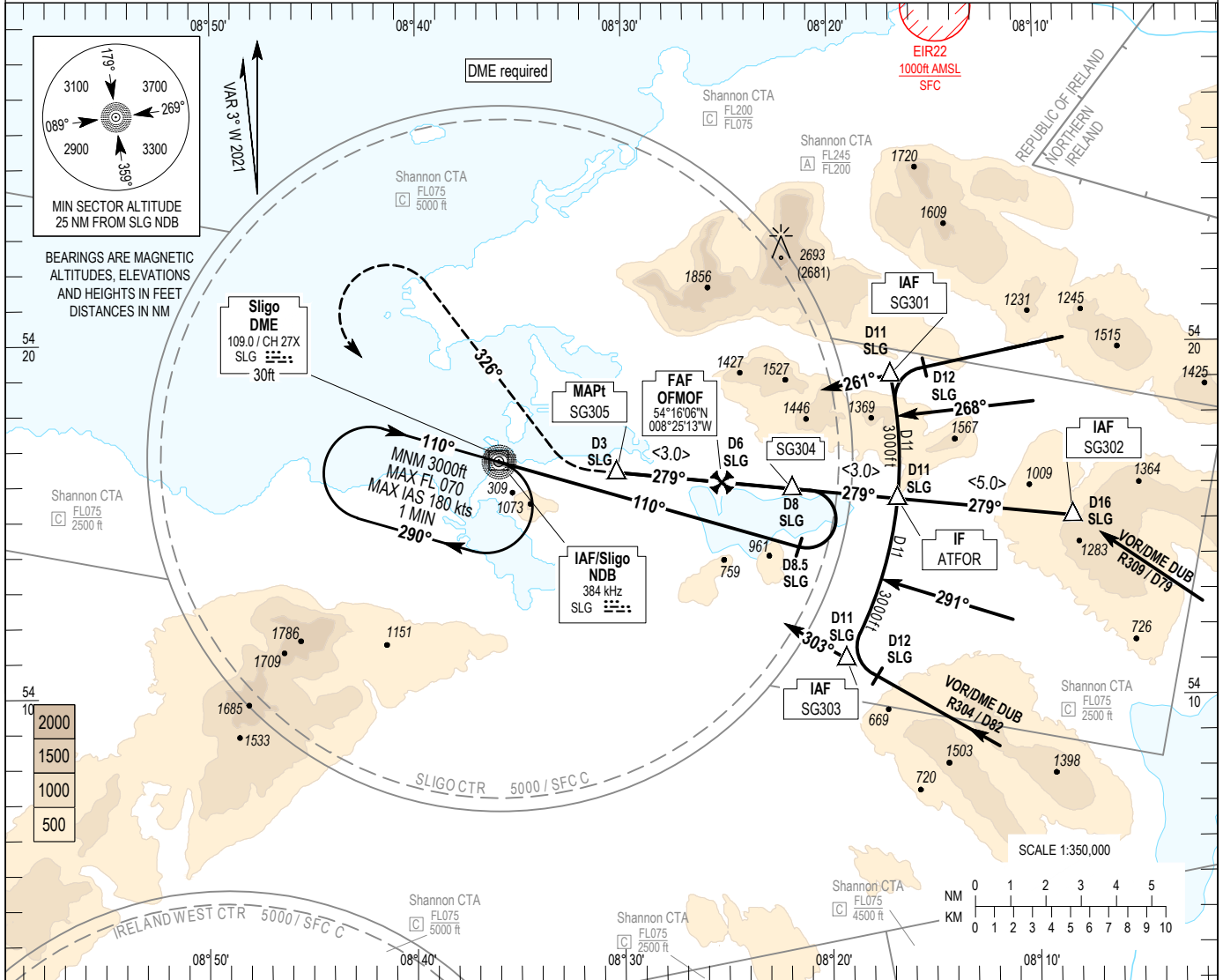


INSTRUMENT APPROACH CHART- ICAO	AERODROME ELEV 15 ft HEIGHTS RELATED TO THR RWY 28 - ELEV 12 ft	TWR 122.100 GND 122.100 AFIS 122.100 Shannon ACC 124.700	SLIGO/SLIGO NDB RWY 28 (ACFT CAT A, B)
--	---	---	--



<p>MISSED APPROACH: At SG305 (MAPt) climbing turn right onto track 326°. Climb to 2500ft then climbing turn left to return to SLG NDB at 3000ft or as instructed by ATC.</p> <p>DME ZERO RANGE OCCURS 47m BEFORE THR RWY 28</p> <p>ELEV 12 ft (THR RWY 28)</p>		<p>IAF SG305 (MAPt) D3 SLG</p> <p>FAF OFMOF D6 SLG</p> <p>SG304 D8 SLG</p> <p>IF ATFOR D11 SLG</p> <p>IAF SG302 D16 SLG</p> <p>TRANSITION ALTITUDE 5000 ft</p>	
<p>NM FROM THR RWY 28</p> <p>3 2 1 0 1 2 3 4 5 6 7 8 9 10 11 12 13 14 15 16 17</p>		<p>990 (978)</p> <p>1700 (1688)</p> <p>2500 (2488)</p> <p>2900 (2888) from NORTH 2700 (2688) from CENTRE 2700 (2688) from SOUTH</p>	
OCA (H)	A	B	NOTE:
STRAIGHT-IN APPROACH	990 (978)		<p>1. Possible DME unlocks in area 040°- 050°, 140°- 170°, 230°- 250° due terrain.</p> <p>2. Timing not authorised. 3. No turns before MAPt. 4. Approach offset 5° to the North. 5. If DME lost on final approach execute missed approach immediately. 6. Instrument approaches only available when Air Traffic Control Zone is active unless authorised by Flight Operations Dept of the Irish Aviation Authority. 7. Non Precision Approach RWY and Visibility 1000m at Aerodrome.</p>
Visual Manoeuvring (Heights AAL)	1420 (1405)		Recommended Profile on Final Approach
	990 (975) North of RWY 10/28		
	DIST THR RWY 28 (NM)		4 5 6
	ALT / HT (ft)		1290 (1278) 1600 (1588) 1900 (1888)
	Ground Speed		kts 80 100 110 120 130
	Descent rate gradient - 5.0% (2.9°) 304 ft/NM		ft / min 430 530 580 640 690

CHANGE: Note 7.

RWY 28 NDB Approach

Fix	IAF SLG NDB	IAF SG301	IAF SG302	IAF SG303	IF ATFOR
Fix Coordinates	54°16'43.4"N 008°36'00.3"W	54°19'06.1"N 008°17'01.6"W	54°15'05.3"N 008°08'14.5"W	54°11'04.5"N 008°19'15.1"W	54°15'36.0"N 008°16'43.5"W
Fix Formation Bearing °True	-	258.03 SLG	275.93 SLG	300.03 SLG	275.82 SLG
Fix Formation Distances	-	11.00 SLG	16.01 SLG	11.00 SLG	11.00 SLG

Descent Angle:	5.0% (2.86°)		
Fix	SDF SG304	FAF OFMOF	MAPt SG305
Fix Coordinates	54°15'54.09"N 008°21'49.04"W	54°16'06.03"N 008°25'12.78"W	54°16'23.81"N 008°30'18.39"W
Fix Formation Bearing °True	275.75 SLG	275.70 SLG	275.63 SLG
Fix Formation Distances	8.00 SLG	6.00 SLG	3.00 SLG

Holding Identification – 110°M, R

Holding Fix	Latitude / Longitude	Inbound True Track (degrees)	Inbound Magnetic Track (degrees)	Maximum Indicated Airspeed (kts)	Maximum/ Minimum Holding Level / Altitude (FL/ft)	Time (min)	Direction of Turn
SLG NDB	54°16'43.4"N 008°36'00.3"W	106.2	110	180	FL070/3000	1	R