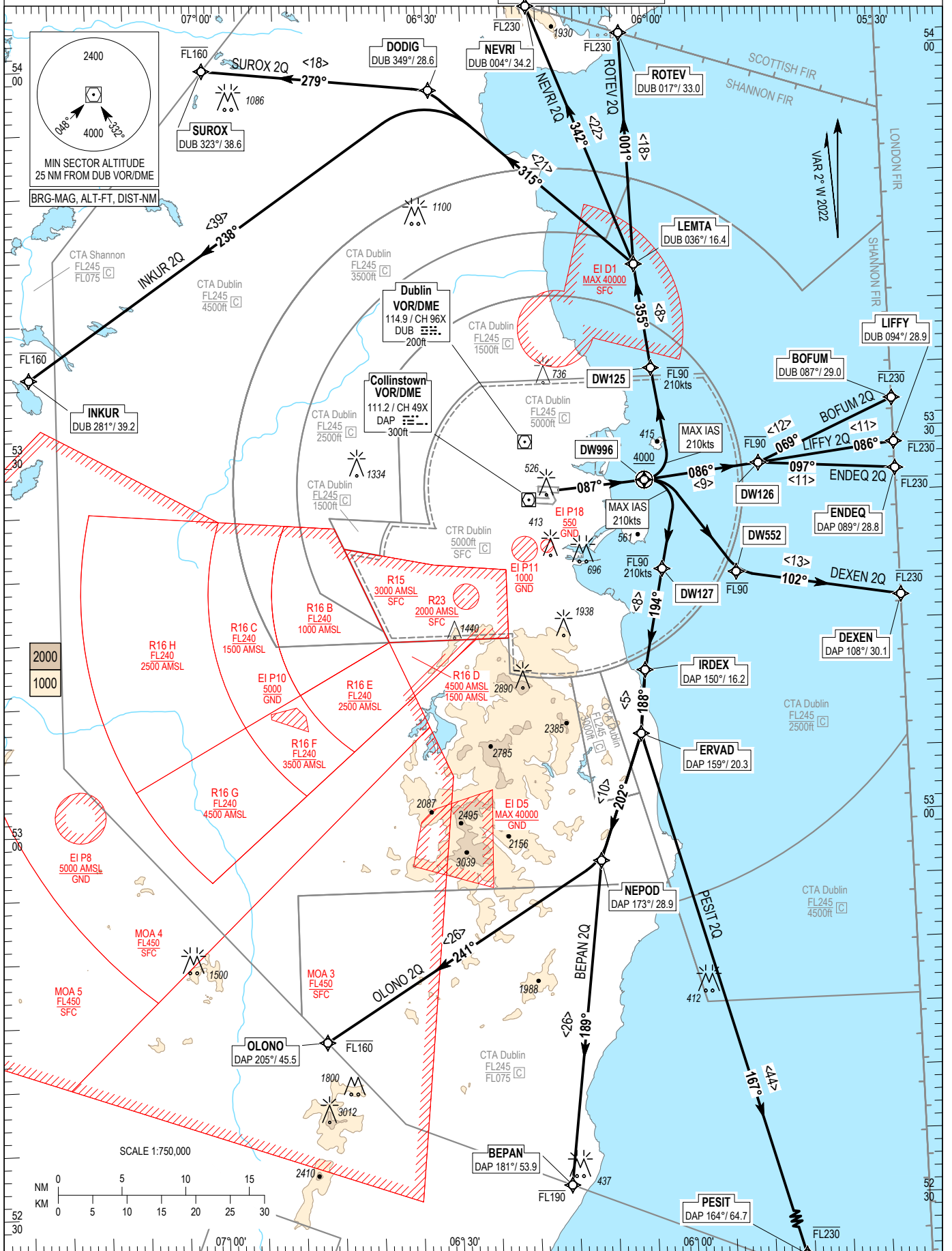


STANDARD DEPARTURE CHART
INSTRUMENT (SID) - ICAO (RNAV)

TRANS ALT 5000ft
TRANS LEVEL by ATC

ATIS DEP TWR NTH 129.640
ACC Lower North 124.680
ACC Lower South 132.580
120.755

DUBLIN RWY 10L, CAT C, D
BOFUM 2Q, LIFFY 2Q, DEXEN 2Q, PESIT 2Q, BEPAN 2Q, OLONO 2Q,
ENDEQ 2Q, INKUR 2Q, SUROX 2Q, NEVRI 2Q, ROTEV 2Q.



CHANGE: Course between DW996 and DW126 on the verso amended to read 086. Frequencies corrected, Note 4 updated.

NOTES: 1. Climb gradient 9.1% (550 ft/NM)(3.3% for obstacle clearance). 2. Close-in obstacles (poles and streetlights) to the right of departure track exist. 3. Integrity check fix available from RADAR. 4. On passing 2000ft contact ACC Lower North or ACC Lower South as appropriate. 5. For BOFUM, LIFFY, ENDEQ and DEXEN MAX IAS: 290kts above FL100.

BEPAN 2Q CAT C/D SID RWY10L

BEPA2Q

Nav. Spec.	WPT Name	Latitude (N)/ Longitude (W)	Path Term	Fly-By Fly-over	True track / Mag track	Distance (NM)	Upper limit / Lower limit (ft)	Speed Limit (kts)	Remarks
RNAV1	DW996	532638.1 / 0060255.6	CF	Fly-Over	085.3 / 087	-	- / +A4000	210	R084° DAP / D9.2 DAP
RNAV1	DW127	531937.2 / 0060104.7	DF	Fly-By	-	-	-FL090 / -	210	Turn R
RNAV1	IRDEX	531145.1 / 0060350.1	TF	Fly-By	191.9 / 194	8.1	-	-	-
RNAV1	ERVAD	530647.1 / 0060440.4	TF	Fly-By	185.8 / 188	5.0	-	-	Turn L
RNAV1	NEPOD	525657.2 / 0061029.8	TF	Fly-By	199.7 / 202	10.5	-	-	Turn R
RNAV1	BEPAN	523136.2 / 0061549.5	TF	Fly-By	187.3 / 189	25.6	-FL190 / -	-	Turn L

BOFUM 2Q CAT C/D SID RWY10L

BOFU2Q

Nav. Spec.	WPT Name	Latitude (N)/ Longitude (W)	Path Term	Fly-By Fly-over	True track / Mag track	Distance (NM)	Upper limit / Lower limit (ft)	Speed Limit (kts)	Remarks
RNAV1	DW996	532638.1 / 0060255.6	CF	Fly-Over	085.3 / 087	-	- / +A4000	-	R084° DAP / D9.2 DAP
RNAV1	DW126	532736.7 / 0054753.6	TF	Fly-By	083.7 / 086	9.0	-FL090 / -	-	-
RNAV1	BOFUM	533214.0 / 0053000.0	TF	Fly-By	066.5 / 069	11.6	-FL230 / -	290	Turn L

DEXEN 2Q CAT C/D SID RWY10L

DEXE2Q

Nav. Spec.	WPT Name	Latitude (N)/ Longitude (W)	Path Term	Fly-By Fly-over	True track / Mag track	Distance (NM)	Upper limit / Lower limit (ft)	Speed Limit (kts)	Remarks
RNAV1	DW996	532638.1 / 0060255.6	CF	Fly-Over	085.3 / 087	-	- / +A4000	-	R084° DAP / D9.2 DAP
RNAV1	DW552	531909.3 / 0055123.7	DF	Fly-By	-	-	-FL090 / -	-	Turn R
RNAV1	DEXEN	531649.4 / 0053000.0	TF	Fly-By	100.2 / 102	13.0	-FL230 / -	290	Turn L

ENDEQ 2Q CAT C/D SID RWY10L

ENDE2Q

Nav. Spec.	WPT Name	Latitude (N)/ Longitude (W)	Path Term	Fly-By Fly-over	True track / Mag track	Distance (NM)	Upper limit / Lower limit (ft)	Speed Limit (kts)	Remarks
RNAV1	DW996	532638.1 / 0060255.6	CF	Fly-Over	085.3 / 087	-	- / +A4000	-	R084° DAP / D9.2 DAP
RNAV1	DW126	532736.7 / 0054753.6	TF	Fly-By	083.7 / 086	9.0	-FL090 / -	-	-
RNAV1	ENDEQ	532644.4 / 0053000.0	TF	Fly-By	094.5 / 097	10.7	-FL230 / -	290	Turn R

INKUR 2Q CAT C/D SID RWY10L

INKU2Q

Nav. Spec.	WPT Name	Latitude (N)/ Longitude (W)	Path Term	Fly-By Fly-over	True track / Mag track	Distance (NM)	Upper limit / Lower limit (ft)	Speed Limit (kts)	Remarks
RNAV1	DW996	532638.1 / 0060255.6	CF	Fly-Over	085.3 / 087	-	- / +A4000	210	R084° DAP / D9.2 DAP
RNAV1	DW125	533523.2 / 0060130.2	DF	Fly-By	-	-	-FL090 / -	210	Turn L
RNAV1	LEMTA	534334.3 / 0060311.6	TF	Fly-By	353.0 / 355	8.3	-	-	-
RNAV1	DODIG	535746.0 / 0062934.0	TF	Fly-By	312.5 / 315	21.1	-	-	Turn L
RNAV1	INKUR	533551.3 / 0072328.6	TF	Fly-By	235.9 / 238	38.8	-FL160 / -	-	Turn L

LIFFY 2Q CAT C/D SID RWY10L

LIFF2Q

Nav. Spec.	WPT Name	Latitude (N)/ Longitude (W)	Path Term	Fly-By Fly-over	True track / Mag track	Distance (NM)	Upper limit / Lower limit (ft)	Speed Limit (kts)	Remarks
RNAV1	DW996	532638.1 / 0060255.6	CF	Fly-Over	085.3 / 087	-	- / +A4000	-	R084° DAP / D9.2 DAP
RNAV1	DW126	532736.7 / 0054753.6	TF	Fly-By	083.7 / 086	9.0	-FL090 / -	-	-
RNAV1	LIFFY	532848.3 / 0053000.0	TF	Fly-By	083.5 / 086	10.8	-FL230 / -	290	Turn L

NEVRI 2Q CAT C/D SID RWY10L

NEVR2Q

Nav. Spec.	WPT Name	Latitude (N)/ Longitude (W)	Path Term	Fly-By Fly-over	True track / Mag track	Distance (NM)	Upper limit / Lower limit (ft)	Speed Limit (kts)	Remarks
RNAV1	DW996	532638.1 / 0060255.6	CF	Fly-Over	085.3 / 087	-	- / +A4000	210	R084° DAP / D9.2 DAP
RNAV1	DW125	533523.2 / 0060130.2	DF	Fly-By	-	-	-FL090 / -	210	Turn L
RNAV1	LEMTA	534334.3 / 0060311.6	TF	Fly-By	353.0 / 355	8.3	-	-	-
RNAV1	NEVRI	540406.0 / 0061611.4	TF	Fly-By	339.6 / 342	22.0	-FL230 / -	-	Turn L

OLONO 2Q CAT C/D SID RWY10L

OLON2Q

Nav. Spec.	WPT Name	Latitude (N)/ Longitude (W)	Path Term	Fly-By Fly-over	True track / Mag track	Distance (NM)	Upper limit / Lower limit (ft)	Speed Limit (kts)	Remarks
RNAV1	DW996	532638.1 / 0060255.6	CF	Fly-Over	085.3 / 087	-	- / +A4000	210	R084° DAP / D9.2 DAP
RNAV1	DW127	531937.2 / 0060104.7	DF	Fly-By	-	-	-FL090 / -	210	Turn R
RNAV1	IRDEX	531145.1 / 0060350.1	TF	Fly-By	191.9 / 194	8.1	-	-	-
RNAV1	ERVAD	530647.1 / 0060440.4	TF	Fly-By	185.8 / 188	5.0	-	-	Turn L
RNAV1	NEPOD	525657.2 / 0061029.8	TF	Fly-By	199.7 / 202	10.5	-	-	Turn R
RNAV1	OLONO	524323.1 / 0064644.4	TF	Fly-By	238.5 / 241	25.8	-FL160 / -	-	Turn R

PESIT 2Q CAT C/D SID RWY10L

PESI2Q

Nav. Spec.	WPT Name	Latitude (N)/ Longitude (W)	Path Term	Fly-By Fly-over	True track / Mag track	Distance (NM)	Upper limit / Lower limit (ft)	Speed Limit (kts)	Remarks
RNAV1	DW996	532638.1 / 0060255.6	CF	Fly-Over	085.3 / 087	-	- / +A4000	210	R084° DAP / D9.2 DAP
RNAV1	DW127	531937.2 / 0060104.7	DF	Fly-By	-	-	-FL090 / -	210	Turn R
RNAV1	IRDEX	531145.1 / 0060350.1	TF	Fly-By	191.9 / 194	8.1	-	-	-
RNAV1	ERVAD	530647.1 / 0060440.4	TF	Fly-By	185.8 / 188	5.0	-	-	Turn L
RNAV1	PESIT	522356.6 / 0054524.0	TF	Fly-By	164.6 / 167	44.5	-FL230 / -	-	Turn L

ROTEV 2Q CAT C/D SID RWY10L

ROTE2Q

Nav. Spec.	WPT Name	Latitude (N)/ Longitude (W)	Path Term	Fly-By Fly-over	True track / Mag track	Distance (NM)	Upper limit / Lower limit (ft)	Speed Limit (kts)	Remarks
RNAV1	DW996	532638.1 / 0060255.6	CF	Fly-Over	085.3 / 087	-	- / +A4000	210	R084° DAP / D9.2 DAP
RNAV1	DW125	533523.2 / 0060130.2	DF	Fly-By	-	-	-FL090 / -	210	Turn L
RNAV1	LEMTA	534334.3 / 0060311.6	TF	Fly-By	353.0 / 355	8.3	-	-	-
RNAV1	ROTEV	540143.7 / 0060358.4	TF	Fly-By	358.6 / 001	18.2	-FL230 / -	-	Turn R

SUROX 2Q CAT C/D SID RWY10L

SURO2Q

Nav. Spec.	WPT Name	Latitude (N)/ Longitude (W)	Path Term	Fly-By Fly-over	True track / Mag track	Distance (NM)	Upper limit / Lower limit (ft)	Speed Limit (kts)	Remarks
RNAV1	DW996	532638.1 / 0060255.6	CF	Fly-Over	085.3 / 087	-	- / +A4000	210	R084° DAP / D9.2 DAP
RNAV1	DW125	533523.2 / 0060130.2	DF	Fly-By	-	-	-FL090 / -	210	Turn L
RNAV1	LEMTA	534334.3 / 0060311.6	TF	Fly-By	353.0 / 355	8.3	-	-	-
RNAV1	DODIG	535746.0 / 0062934.0	TF	Fly-By	312.5 / 315	21.1	-	-	Turn L
RNAV1	SUROX	535948.0 / 0065936.5	TF	Fly-By	276.8 / 279	17.9	-FL160 / -	-	Turn L