

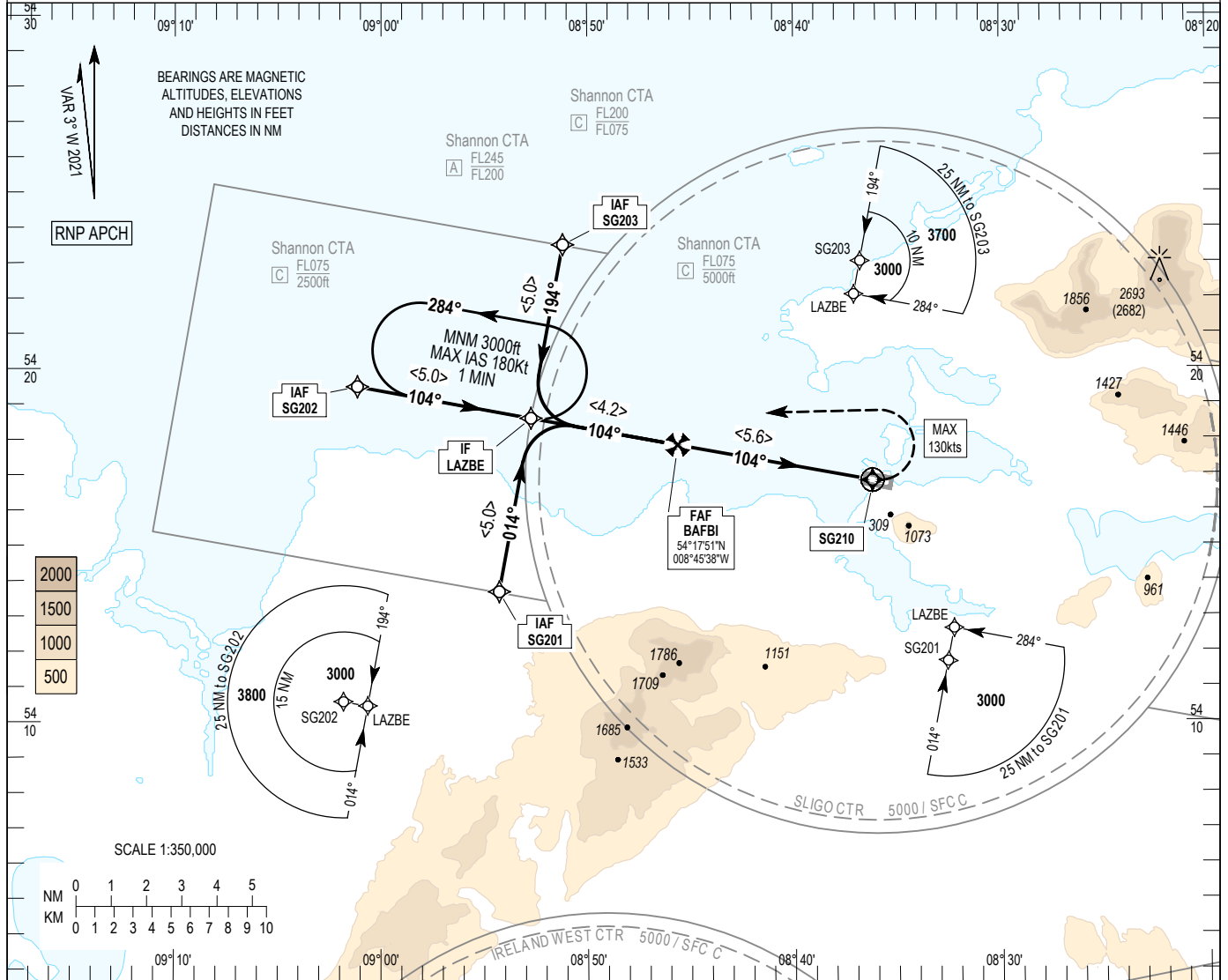
INSTRUMENT
APPROACH
CHART- ICAO

AERODROME ELEV 15 ft
HEIGHTS RELATED TO
THR RWY 10 - ELEV 11 ft

TWR	122.100
GND	122.100
AFIS	122.100

SBAS	CH 94666
E10A	

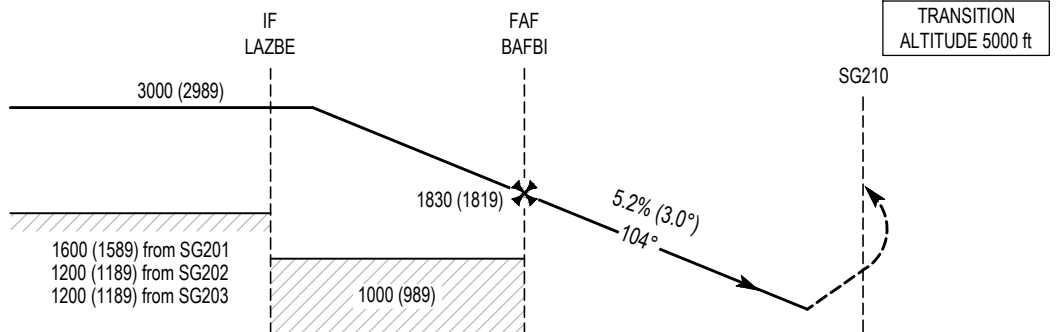
SLIGO / SLIGO
RNP Y RWY 10 (LPV only)
(ACFT CAT A,B)



MISSED APPROACH:
Climb straight ahead at SG210 turn left (MAX IAS 130 kts) direct to LAZBE to hold (MNM 3000 ft) or as directed by ATC.

RDH 50

ELEV 11 ft (THR RWY 10)



NM FROM THR RWY 10

OCA (H)	A	B
LPV (MACG 2.5 %)	830 (819)	840 (829)
LPV (MACG 5.0 %)	330 (319)	340 (329)
Visual Manoeuvring (Heights AAL)	1420 (1405)	
	850 (835) North of RWY 10/28	

NOTE:
1. Instrument approaches only available when Air Traffic Control Zone is active unless authorised by Flight Operation Dept of the Irish Aviation Authority.
2. Non Precision Approach RWY and Visibility 1000m at Aerodrome.

CHANGE: Missed Approach, Visual Manoeuvring OCA(H), OCA(H), Notes, Recommended Profile.

Sligo RNP Y RWY10 via SG201

Nav. Spec.	WPT Name	Latitude (N)/ Longitude (W)	Path Term	Fly-By Fly-over	True track / Mag track	Distance (NM)	Upper limit / Lower limit	Speed Limit (kts)	VPA (°) / TCH (ft)	Remarks
RNP APCH	SG201	541341.8 / 0085417.1	IF	-	-	-	- / A3000	-	-	-
RNP APCH	LAZBE	541836.4 / 0085244.8	TF	Fly-By	010.4 / 014	5.0	- / A3000	-	-	-
RNP APCH	BAFBI	541750.8 / 0084538.2	TF	Fly-By	100.3 / 104	4.2	-	-	-	R
RNP APCH	SG210	541650.4 / 0083612.8	CF	Fly-Over	100.3 / 104	-	-	130	3.00 / 50	314° SLG / D0.1 SLG
RNP APCH	LAZBE	541836.4 / 0085244.8	DF	Fly-By	-	-	- / A3000	-	-	L

Sligo RNP Y RWY10 via SG202

Nav. Spec.	WPT Name	Latitude (N)/ Longitude (W)	Path Term	Fly-By Fly-over	True track / Mag track	Distance (NM)	Upper limit / Lower limit	Speed Limit (kts)	VPA (°) / TCH (ft)	Remarks
RNP APCH	SG202	541930.2 / 0090108.7	IF	-	-	-	- / A3000	-	-	-
RNP APCH	LAZBE	541836.4 / 0085244.8	TF	Fly-By	100.3 / 104	5.0	- / A3000	-	-	-
RNP APCH	BAFBI	541750.8 / 0084538.2	TF	Fly-By	100.3 / 104	4.2	-	-	-	-
RNP APCH	SG210	541650.4 / 0083612.8	CF	Fly-Over	100.3 / 104	-	-	130	3.00 / 50	314° SLG / D0.1 SLG
RNP APCH	LAZBE	541836.4 / 0085244.8	DF	Fly-By	-	-	- / A3000	-	-	L

Sligo RNP Y RWY10 via SG203

Nav. Spec.	WPT Name	Latitude (N)/ Longitude (W)	Path Term	Fly-By Fly-over	True track / Mag track	Distance (NM)	Upper limit / Lower limit	Speed Limit (kts)	VPA (°) / TCH (ft)	Remarks
RNP APCH	SG203	542330.9 / 0085112.2	IF	-	-	-	- / A3000	-	-	-
RNP APCH	LAZBE	541836.4 / 0085244.8	TF	Fly-By	190.4 / 194	5.0	- / A3000	-	-	-
RNP APCH	BAFBI	541750.8 / 0084538.2	TF	Fly-By	100.3 / 104	4.2	-	-	-	L
RNP APCH	SG210	541650.4 / 0083612.8	CF	Fly-Over	100.3 / 104	-	-	130	3.00 / 50	314° SLG / D0.1 SLG
RNP APCH	LAZBE	541836.4 / 0085244.8	DF	Fly-By	-	-	- / A3000	-	-	L

Hold Identification

Holding Fix	Latitude (N) / Longitude (W)	Inbound True Track (degrees)	Inbound Mag Track (degrees)	Maximum Indicated Airspeed (kts)	Minimum Holding Altitude/ Level (FL/ft)	Maximum Holding Altitude/ Level (FL/ft)	Outbound time (min)	Direction of Turn
LAZBE	541836.4 / 0085244.8	100.3	104	180	A3000	FL075	1	L

**SBAS FAS Data Block Coding Data
Sligo RNP RWY 10**

Input Data	
Operation Type	0
Service Provider	1 (EGNOS)
Airport Identifier	EISG
Runway	10
Runway Direction	0 (None)
Approach Performance Designator	0
Route Indicator	Y
Reference Path Data Selector	0
Reference Path Identifier	E10A
LTP / FTP Latitude	541651.9070N
LTP / FTP Longitude	0083626.5055W
LTP / FTP Ellipsoidal Height	61.2 m
FPAP Latitude	541642.0560N
Delta FPAP Latitude	-9.8510 seconds
FPAP Longitude	0083454.3485W
Delta FPAP Longitude	92.1570 seconds
Threshold Crossing Height	50
TCH Units Selector	0 (feet)
Glidepath Angle	3.00
Course Width	105 m
Length Offset	560 m
HAL	40 m
VAL	35 m
Output Data	
Data Block	10 07 13 09 05 0A C8 00 01 30 31 05 86 7F 4B 17 ED 5D 4E FC 64 16 0A B3 FF FA CF 02 F4 01 2C 01 64 46 C8 AF 73 B7 7B 76
Calculated CRC Value	73B77B76
Required Additional Data (not CRC wrapped)	
ICAO Code	EI
LTP/FTP Orthometric Height	3.4 m
FPAP Orthometric Height (metres)	3.4
SBAS EGNOS Channel	94666