

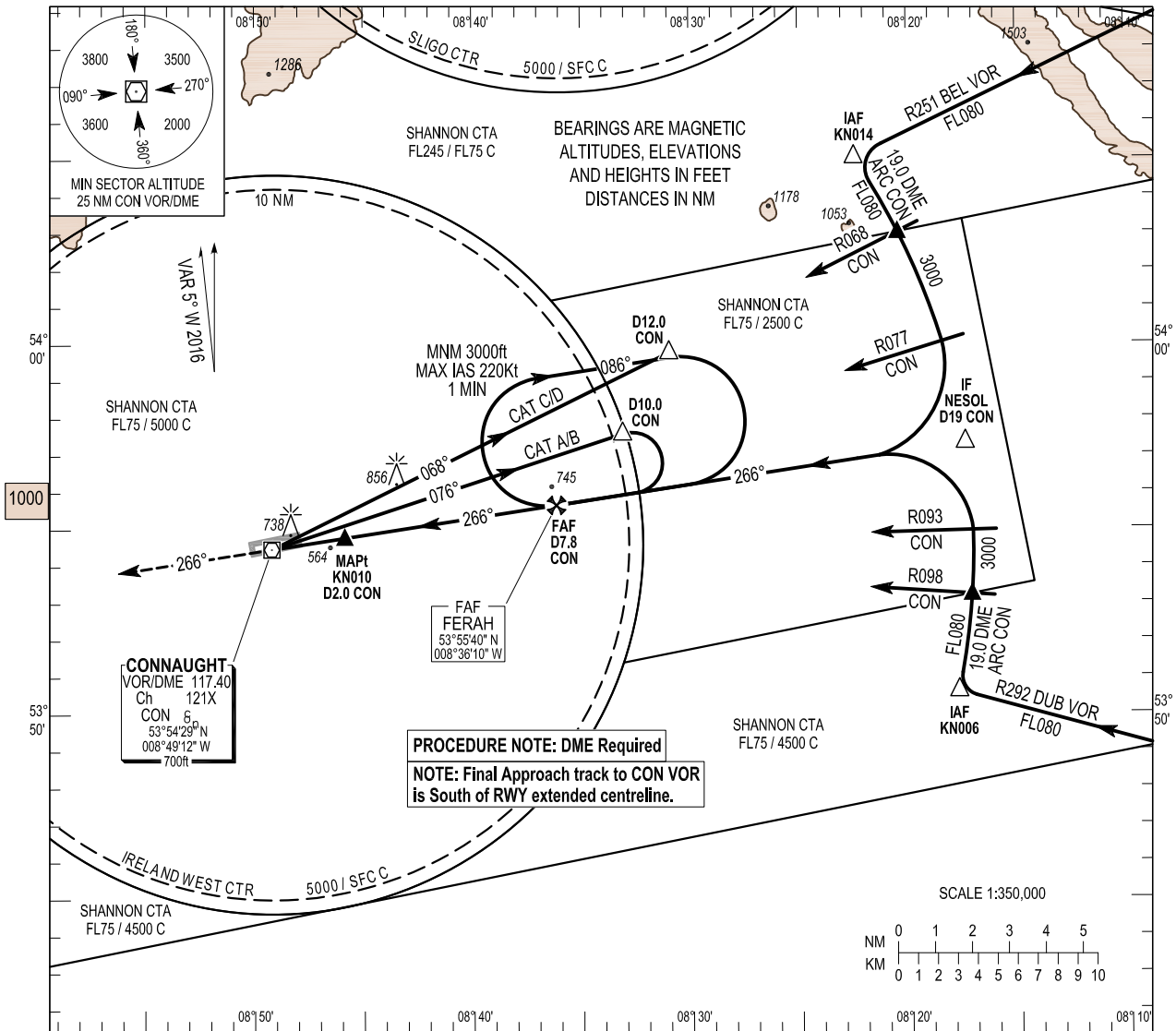
INSTRUMENT APPROACH CHART - ICAO

AERODROME ELEV 665 ft
 HEIGHTS RELATED TO THR RWY 26 - ELEV 665 ft

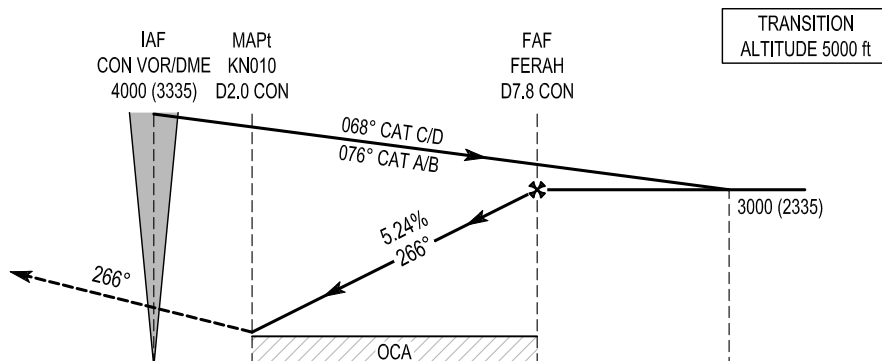
TWR	130.7
GND	130.7, 121.9
Emerg	121.5

CONSULT NOTAM FOR LATEST INFORMATION

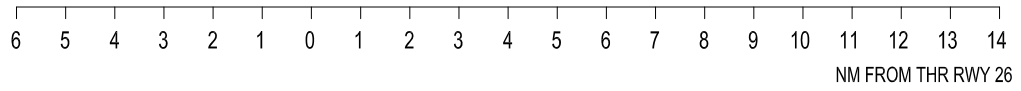
IRELAND WEST/KNOCK VOR RWY 26
 (ACFT CAT A, B, C, D)



MISSED APPROACH:
 Climb RDL 266° CON to 3000ft, turning left continuing climb to 4000ft to enter the FERAH hold or as instructed by ATC.



Change: General Revision.



OCA (H)	A	B	C	D	Ideal Altitude (Height) on Final Approach								
					D7.0 CON	D6.0 CON	D5.0 CON	D4.0 CON	D3.0 CON				
VISUAL MANOEUVRING RWY26 (These heights are AAL)	1100 (435)				2722 (2057)	2404 (1739)	2085 (1420)	1767 (1102)	1449 (784)				
VISUAL MANOEUVRING RWY08 (These heights are AAL)	1100 (435)	1160 (495)	1260 (595)	1360 (695)	Ground speed Descent Rate 5.24% (3°), 318 ft/NM		Kts	70	90	100	120	140	160
					ft / min			370	480	530	640	740	850

RWY 26 VOR Approach

Descent Angle:	3.00°				
Fix	IAF KN014	IAF KN006	IF NESOL	FAF FERAH	MAPt KN010
Fix Coordinates	540501.9N 0082226.3W	535035.7N 0081746.5W	535718.6N 0081724.6 W	535539.6N 0083609.7W	535447.2N 0084551.8W
Fix Formation Bearing ⁰ _T	056.04 CON	101.61 CON	081.21 CON	081.21 CON	081.21 CON
Fix Formation Distances	19.01 CON	19.01 CON	19.01 CON	7.80 CON	2.00 CON

Holding Identification EIKN AD 2.24-11

<i>Holding Fix</i>	<i>Latitude (N / Longitude (W)</i>	<i>Inbound True Track (degrees)</i>	<i>Inbound Magnetic Track (degrees)</i>	<i>Maximum Indicated Airspeed (kts)</i>	<i>Minimu/Maximum Holding Level / Altitude (FL/ft)</i>	<i>Distance outbound (NM)</i>	<i>Direction of Turn</i>
FERAH	535539.6N / 0083609.7W	259.0	264	220	3000ft/FL80	5.2	R