

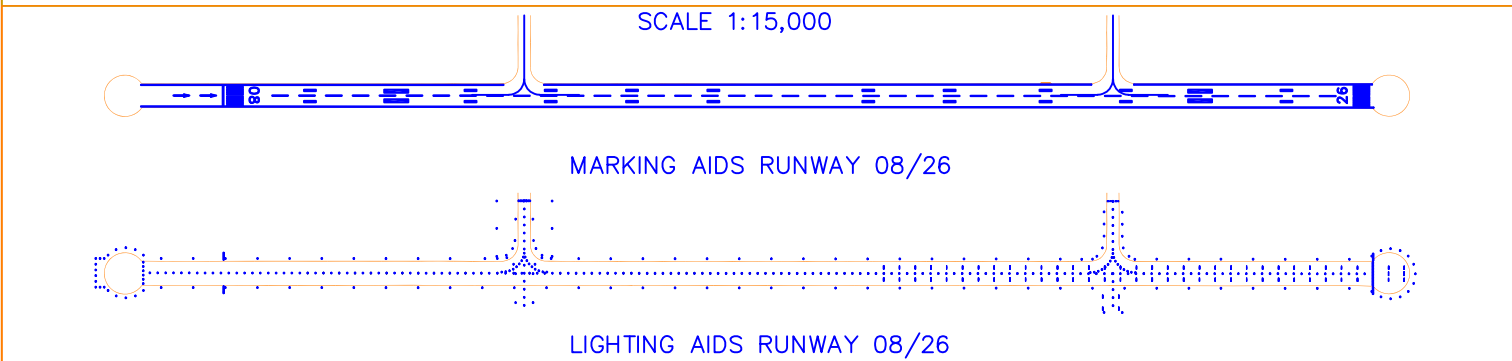
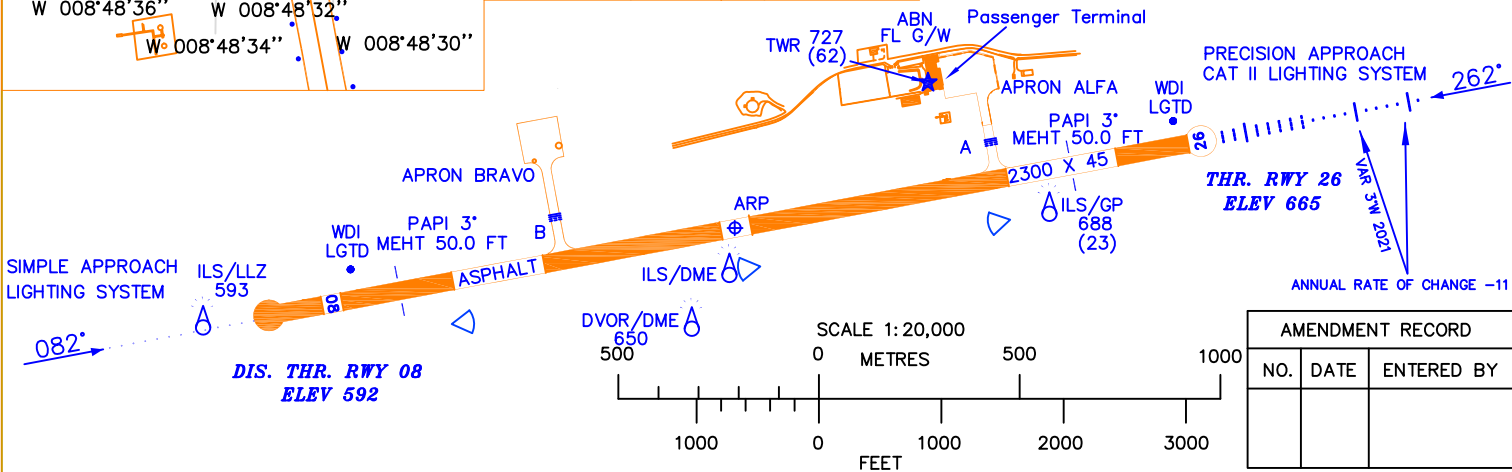
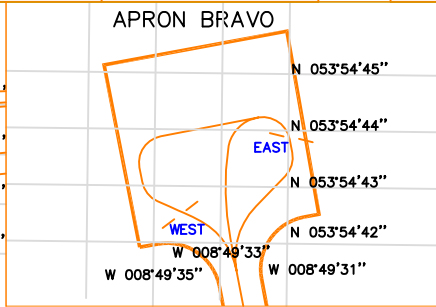
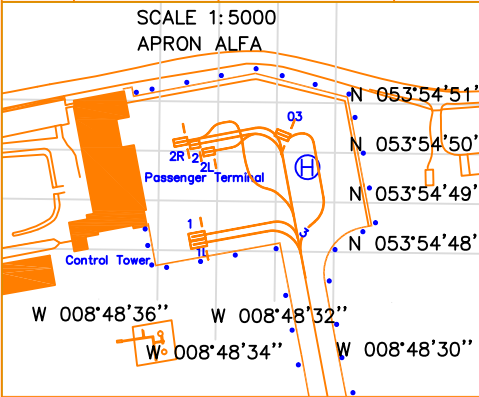
AERODROME CHART – ICAO 53 54 37.07 N AERODROME ELEV 665FT
008 49 06.57 W APRON ELEV 660FT

TWR 130.7
GND 121.9
ATIS 118.525

CONSULT NOTAM FOR LATEST **IRELAND WEST AIRPORT/ IRELAND** INFORMATION

RWY	DIRECTION	THR		BEARING STRENGTH	
08	082°	53 54 30.76 N	008 50 00.13 W	PCN 52/F/A/W/T	
26	262°	53 54 44.33 N	008 48 04.78 W		

LEGEND	
AIRCRAFT STANDS	1
RUNWAY HOLDING POSITION MARKING	≡≡≡≡
RVR	▷



APRON ALPHA						
Stand	Latitude	Longitude	Max Wingspan	Max Length	Conditions	
1L	53 54 48.13 N	008 48 36.65 W	36.00m	44.50m	Stand 1L, 2L vacant	
1	53 54 48.31 N	008 48 36.71 W	36.00m	44.50m	Stand 1, 2L vacant	
2	53 54 50.34 N	008 48 36.94 W	36.00m	44.50m	Stand 2, 2L vacant, stand 3 or stand 1 and 1L vacant for entry and exit	
2L	53 54 50.19 N	008 48 36.38 W	38.06m	47.33m	Stand 1, 2L, 2R, 3 vacant	
2R	53 54 50.41 N	008 48 37.41 W	47.57m	54.94m	Stand 1, 1L, 2, 2R, 3 vacant	
3	53 54 50.50 N	008 48 33.55 W	36.00m	44.50m	Stand 2L vacant, stand 2 max size 34.50m x 44.50m (A321)	
APRON BRAVO						
EAST	53 54 43.54 N	008 49 30.71 W	36m	45m	NIL	
WEST	53 54 42.28 N	008 49 34.02 W	36m	45m	NIL	

NOTE 1: TAXIWAY PCN (ALPHA AND BRAVO) 52/F/A/W/T.
NOTE 2: APRON ALPHA AND BRAVO PCN 57/F/A/W/T.
NOTE 3: TAXIWAY A AND B: 23M WIDE.
NOTE 4: APRON SURFACE ALPHA : CONCRETE WITH ASPHALT.
NOTE 5: PUSH BACK NOT AVAILABLE ON STANDS.
NOTE 6: APRON SURFACE BRAVO: CONCRETE
NOTE 7: All Aircraft must request start and taxi clearance from ATC on frequency 130.70Mhz (or 121.90Mhz if no response from 130.70Mhz).
NOTE 8: Aircraft are not permitted to enter the runway even if the airport is closed unless previously arranged with ATC.

CHANGES: Magnetic variation and Stands 1 & 2