

**INSTRUMENT APPROACH CHART - ICAO**

**AERODROME ELEV 112 ft**  
 HEIGHTS RELATED TO THR RWY 26 - ELEV 112 ft

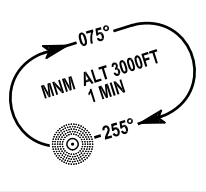
Kerry TWR	123.325
Kerry GND	121.600
Shannon Control	124.700
ATIS	118.025

CONSULT NOTAM FOR LATEST INFORMATION

**KERRY / KERRY ILS or LOC RWY 26**  
 (ACFT CAT A,B,C)

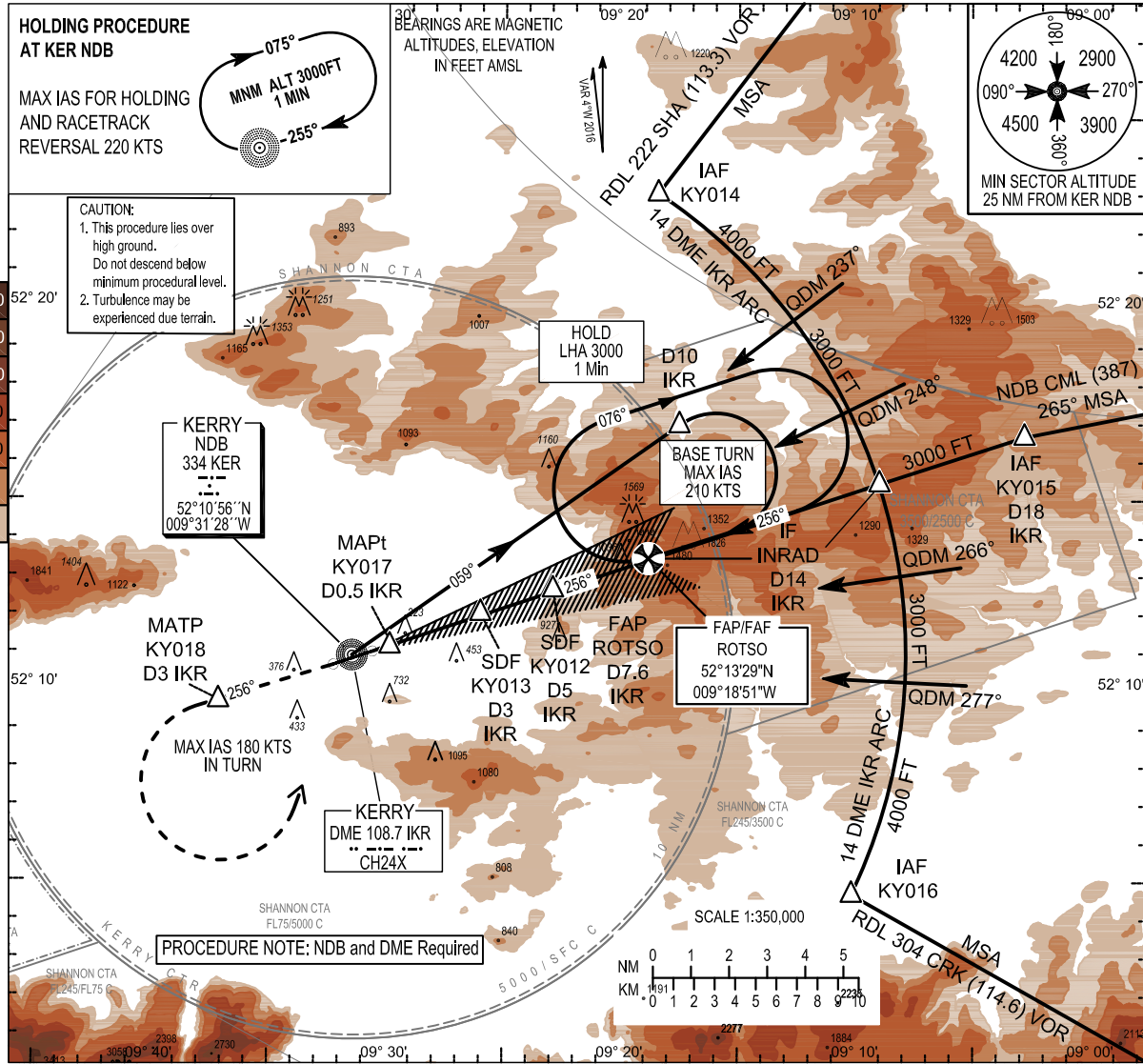
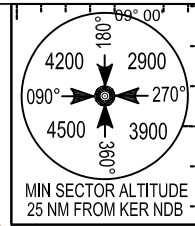
**HOLDING PROCEDURE AT KER NDB**

MAX IAS FOR HOLDING AND RACETRACK REVERSAL 220 KTS



**CAUTION:**  
 1. This procedure lies over high ground. Do not descend below minimum procedural level.  
 2. Turbulence may be experienced due terrain.

BEARINGS ARE MAGNETIC ALTITUDES, ELEVATION IN FEET AMSL

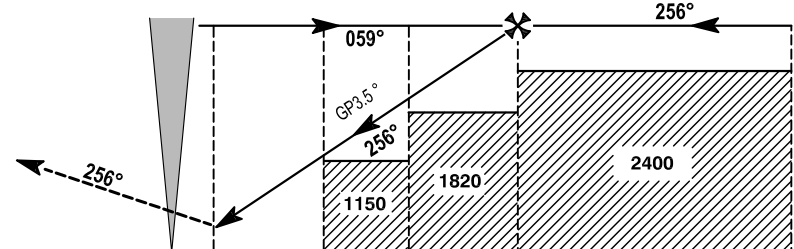


CHANGE: KER Holding Speed and Procedure name

**MISSED APPROACH:**  
 Climb straight ahead to 3.0D IKR, turning left to enter the KER Hold climbing to 3000ft (Max IAS 180KT in the Turn) or as instructed by ATC.

LOC MAPt	LOC SDF	LOC SDF	ROTSO	INRAD
IAF KY017	KY013	KY012	FAP/FAF	IF
KER NDB	D0.5 IKR	D3 IKR	D7.6 IKR	D14 IKR
3000ft	480ft	1280ft	3000ft	3000ft

TRANSITION ALTITUDE 5000 ft



ELEV 112 ft (THR RWY 26)

7 6 5 4 3 2 1 0 1 2 3 4 5 6 7 8 9 10 11 12 13 14 15 16 17 18								
NM FROM THR RWY 26								
OCA (H)		A	B	C				
Straight-in Approach	CAT I	250 (138)	259 (147)	271 (159)				
	LOC	480 (368)						
Visual Manoeuvring (These heights are AAL)	Total Area	1040 (928)	1140 (1028)	1490 (1378)				
	North of RWY only	750 (638)	750 (638)	920 (808)				
NOTE: INSTRUMENT APPROACHES ONLY AVAILABLE WHEN AIR TRAFFIC CONTROL ZONE IS ACTIVE UNLESS AUTHORIZED BY THE OPERATING STANDARDS DEPARTMENT OF THE IAA.								
Recommended Profile in Final Approach								
DME (NM)	7.0	6.0	5.0	4.0	3.0			
ALT / HT (ft)	2760/2648	2390/2278	2020/1908	1650/1538	1280/1168			
Ground Speed	kts		70	90	100	110	120	140
Descent Rate Gradient - 6.12%, (3.5°)	ft / min		430	560	620	680	740	870

**RWY26 ILS Approach**

Fix	IAF KY014	IAF KY015	IAF KY016	IF INRAD	FAP ROTSO	MATP KY018
Fix Co-Ordinates	522303.3N 0091827.5W	521640.6N 0090247.1W	520441.4N 0091009.9W	521528.8N 0090901.3W	521329.3N 0091850.6W	520948.2N 0093655.9W
Fix formation Bearing °T	213.43 KER	252.12 KER	295.59 KER	252.03 KER	251.83 KER	071.43 KER
Fix Formation Distances	14.00 IKR	18.00 IKR	14.00 IKR	14.00 IKR	7.60 IKR	3.0 IKR

**RWY26 LOC Approach**

Descent Angle:	3.50°								
Fix	IAF KY014	IAF KY015	IAF KY016	IF INRAD	FAF ROTSO	SDF KY012	SDF KY013	MAPt KY017	MATP KY018
Fix Co-Ordinates	522303.3N 0091827.5W	521640.6N 0090247.1W	520441.4N 0091009.9W	521528.8N 0090901.3W	521329.3N 0091850.6W	521237.7N 0092253.3W	521159.3N 0092558.2W	521111.3N 0092949.3W	520948.2N 0093655.9W
Fix formation Bearing °T	213.43 KER	252.12 KER	295.59 KER	252.03 KER	251.83 KER	252.20 KER	252.63 KER	255.71 KER	071.43 KER
Fix Formation Distances	14.00 IKR	18.00 IKR	14.00 IKR	14.00 IKR	7.60 IKR	5.00 IKR	3.00 IKR	0.50 IKR	3.0 IKR

**Holding Identification**

Holding Fix	Latitude (N)/ Longitude (W)	Inbound True Track °T	Inbound Magnetic Track °M	Max Indicated Airspeed (kts)	Maximum/ Minimum Holding Level/ Altitude (FL/ft)	Distance outbound (NM)	Direction of Turn
NDB KER	521055.8/ 0093128.2	250.5	255	220	FL100/ 3000ft	3.7	R
ROTSO	521329.3/ 0091850.6	252.1	256	240	FL100/ 3000ft	4.1	R