

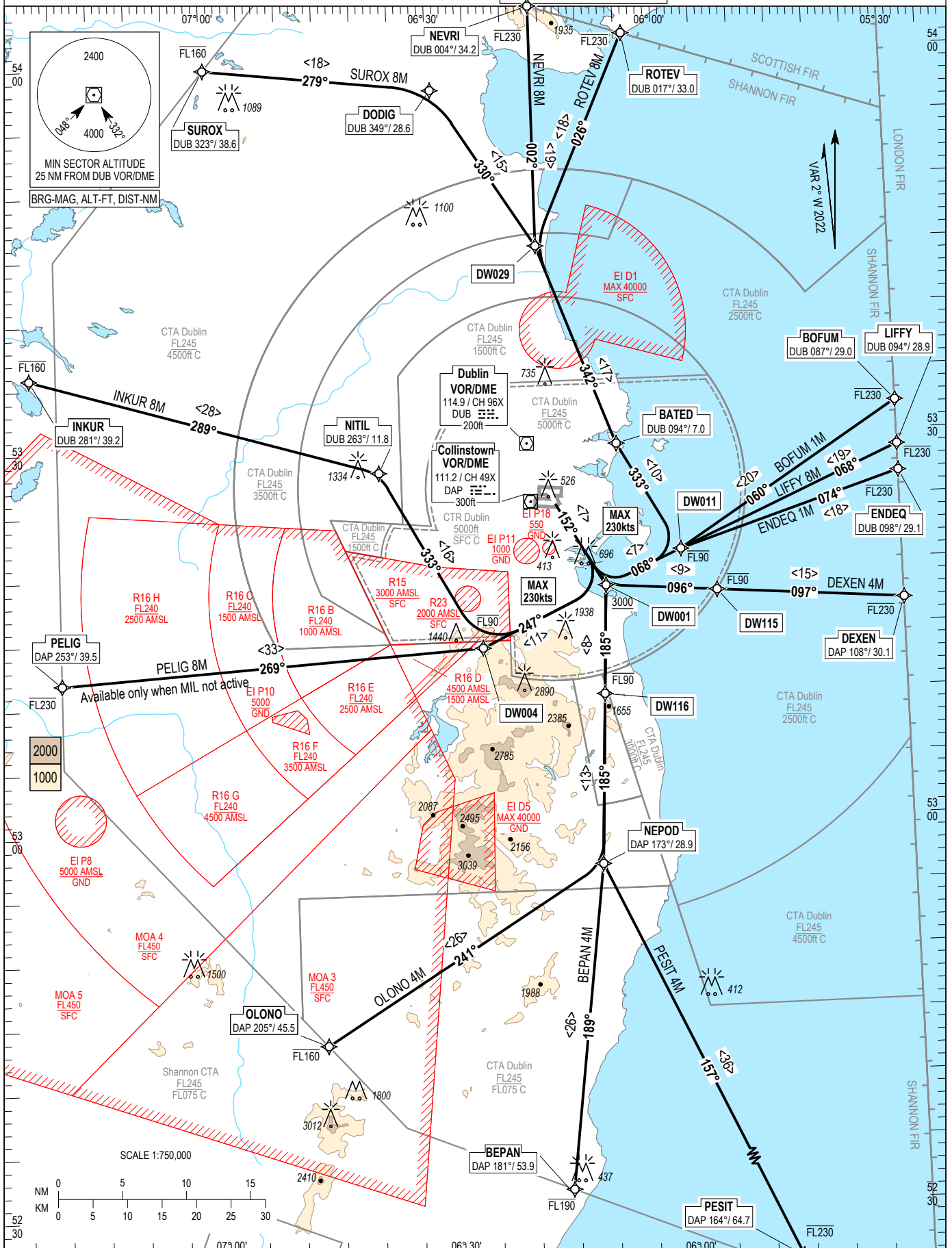
RNAV STANDARD DEPARTURE CHART INSTRUMENT (SID) - ICAO

TRANS ALT 5000ft TRANS LEVEL by ATC

ATIS TWR 124.530 118.600 ACC Lower North 132.580 ACC Lower South 120.755

DUBLIN RWY 16, CAT C, D

ENDEQ 1M, LIFFY 8M, DEXEN 4M, PESIT 4M, BEPAN 4M, OLONO 4M, BOFUM 1M, PELIG 8M, INKUR 8M, SUROX 8M, NEVRI 8M, ROTEV 8M



**NOTES:** 1. Climb gradient 9.1% (550 ft/NM) (3.3% for obstacle clearance, INKUR & PELIG 3.7% up to 3000 ft for obstacle clearance). 2. Integrity Check fix available from RADAR. 3. On passing 2000ft contact ACC Lower North or ACC Lower South as appropriate. 4. For BOFUM, LIFFY, ENDEQ and DEXEN MAX IAS: 290kt above FL100. 5. Close-in obstacles exist. 6. Continuous climb to 4000ft (9.1% 550ft/NM) required on INKUR & PELIG for separation from military operations at 3000ft in R15. 7. DME/DME or GNSS navigation required.

CHANGE: Verso page amended, Spotheights updated.

**BEPAN 4M CAT C/D SID RWY16**

**BEPA4M**

Nav. Spec.	WPT Name	Latitude (N)/ Longitude (W)	Path Term	Fly-By Fly-over	True track / Mag track	Distance (NM)	Upper limit / Lower limit	Speed Limit (kts)	Remarks
RNAV1	DW001	531841.3 / 0060846.5	CF	Fly-By	150.2 / 152	-	- / +A3000	-	142° DAP / D8.8 DAP
RNAV1	DW116	531013.0 / 0060927.0	TF	Fly-By	182.7 / 185	8.5	-FL90 / -	-	Turn R
RNAV1	NEPOD	525657.2 / 0061029.8	TF	Fly-By	182.7 / 185	13.3	-	-	-
RNAV1	BEPAN	523136.2 / 0061549.5	TF	Fly-By	187.3 / 189	25.6	-FL190 / -	-	Turn R

**BOFUM 1M CAT C/D SID RWY16**

**BOFU1M**

Nav. Spec.	WPT Name	Latitude (N)/ Longitude (W)	Path Term	Fly-By Fly-over	True track / Mag track	Distance (NM)	Upper limit / Lower limit	Speed Limit (kts)	Remarks
RNAV1	DW001	531841.3 / 0060846.5	CF	Fly-By	150.2 / 152	-	- / +A3000	230	142° DAP / D8.8 DAP
RNAV1	DW011	532118.8 / 0055849.4	TF	Fly-By	066.2 / 068	6.5	-FL90 / -	-	Turn L
RNAV1	BOFUM	533214.0 / 0053000.0	TF	Fly-By	057.4 / 060	20.4	-FL230 / -	290	Turn L

**DEXEN 4M CAT C/D SID RWY16**

**DEXE4M**

Nav. Spec.	WPT Name	Latitude (N)/ Longitude (W)	Path Term	Fly-By Fly-over	True track / Mag track	Distance (NM)	Upper limit / Lower limit	Speed Limit (kts)	Remarks
RNAV1	DW001	531841.3 / 0060846.5	CF	Fly-By	150.2 / 152	-	- / +A3000	-	142° DAP / D8.8 DAP
RNAV1	DW115	531801.1 / 0055419.6	TF	Fly-By	094.3 / 096	8.7	-FL90 / -	-	Turn L
RNAV1	DEXEN	531649.4 / 0053000.0	TF	Fly-By	094.5 / 097	14.6	-FL230 / -	290	-

**ENDEQ 1M CAT C/D SID RWY16**

**ENDE1M**

Nav. Spec.	WPT Name	Latitude (N)/ Longitude (W)	Path Term	Fly-By Fly-over	True track / Mag track	Distance (NM)	Upper limit / Lower limit	Speed Limit (kts)	Remarks
RNAV1	DW001	531841.3 / 0060846.5	CF	Fly-By	150.2 / 152	-	- / +A3000	230	142° DAP / D8.8 DAP
RNAV1	DW011	532118.8 / 0055849.4	TF	Fly-By	066.2 / 068	6.5	-FL90 / -	-	Turn L
RNAV1	ENDEQ	532644.4 / 0053000.0	TF	Fly-By	072.3 / 074	18.1	-FL230 / -	290	Turn R

**INKUR 8M CAT C/D SID RWY16**

**INKU8M**

Nav. Spec.	WPT Name	Latitude (N)/ Longitude (W)	Path Term	Fly-By Fly-over	True track / Mag track	Distance (NM)	Upper limit / Lower limit	Speed Limit (kts)	Remarks
RNAV1	DW001	531841.3 / 0060846.5	CF	Fly-By	150.2 / 152	-	- / +A3000	230	142° DAP / D8.8 DAP
RNAV1	DW004	531406.0 / 0062504.0	TF	Fly-By	244.9 / 247	10.8	-FL90 / -	-	Turn R
RNAV1	NITIL	532800.0 / 0063755.0	TF	Fly-By	331.1 / 333	15.9	-	-	Turn R
RNAV1	INKUR	533551.3 / 0072328.6	TF	Fly-By	286.4 / 289	28.3	-FL160 / -	-	Turn L

**LIFFY 8M CAT C/D SID RWY16**

**LIFF8M**

Nav. Spec.	WPT Name	Latitude (N)/ Longitude (W)	Path Term	Fly-By Fly-over	True track / Mag track	Distance (NM)	Upper limit / Lower limit	Speed Limit (kts)	Remarks
RNAV1	DW001	531841.3 / 0060846.5	CF	Fly-By	150.2 / 152	-	- / +A3000	230	142° DAP / D8.8 DAP
RNAV1	DW011	532118.8 / 0055849.4	TF	Fly-By	066.2 / 068	6.5	-FL90 / -	-	Turn L
RNAV1	LIFFY	532848.3 / 0053000.0	TF	Fly-By	066.3 / 068	18.8	-FL230 / -	290	-

**NEVRI 8M CAT C/D SID RWY16**

**NEVR8M**

Nav. Spec.	WPT Name	Latitude (N)/ Longitude (W)	Path Term	Fly-By Fly-over	True track / Mag track	Distance (NM)	Upper limit / Lower limit	Speed Limit (kts)	Remarks
RNAV1	DW001	531841.3 / 0060846.5	CF	Fly-By	150.2 / 152	-	- / +A3000	230	142° DAP / D8.8 DAP
RNAV1	DW011	532118.8 / 0055849.4	TF	Fly-By	066.2 / 068	6.5	-FL90 / -	230	Turn L
RNAV1	BATED	532942.8 / 0060642.8	TF	Fly-By	330.8 / 333	9.6	-	-	Turn L
RNAV1	DW029	534521.0 / 0061621.0	TF	Fly-By	339.9 / 342	16.7	-	-	Turn R
RNAV1	NEVRI	540406.0 / 0061611.4	TF	Fly-By	000.3 / 002	18.8	-FL230 / -	-	Turn R

**OLONO 4M CAT C/D SID RWY16**

**OLON4M**

Nav. Spec.	WPT Name	Latitude (N)/ Longitude (W)	Path Term	Fly-By Fly-over	True track / Mag track	Distance (NM)	Upper limit / Lower limit	Speed Limit (kts)	Remarks
RNAV1	DW001	531841.3 / 0060846.5	CF	Fly-By	150.2 / 152	-	- / +A3000	-	142° DAP / D8.8 DAP
RNAV1	DW116	531013.0 / 0060927.0	TF	Fly-By	182.7 / 185	8.5	-FL90 / -	-	Turn R
RNAV1	NEPOD	525657.2 / 0061029.8	TF	Fly-By	182.7 / 185	13.3	-	-	-
RNAV1	OLONO	524323.1 / 0064644.4	TF	Fly-By	238.5 / 241	25.8	-FL160 / -	-	Turn R

**PELIG 8M CAT C/D SID RWY16**

**PELI8M**

Nav. Spec.	WPT Name	Latitude (N)/ Longitude (W)	Path Term	Fly-By Fly-over	True track / Mag track	Distance (NM)	Upper limit / Lower limit	Speed Limit (kts)	Remarks
RNAV1	DW001	531841.3 / 0060846.5	CF	Fly-By	150.2 / 152	-	- / +A3000	230	142° DAP / D8.8 DAP
RNAV1	DW004	531406.0 / 0062504.0	TF	Fly-By	244.9 / 247	10.8	-FL90 / -	-	Turn R
RNAV1	PELIG	531158.5 / 0072000.0	TF	Fly-By	266.7 / 269	33.1	-FL230 / -	-	Turn R

**PESIT 4M CAT C/D SID RWY16**

**PESI4M**

Nav. Spec.	WPT Name	Latitude (N)/ Longitude (W)	Path Term	Fly-By Fly-over	True track / Mag track	Distance (NM)	Upper limit / Lower limit	Speed Limit (kts)	Remarks
RNAV1	DW001	531841.3 / 0060846.5	CF	Fly-By	150.2 / 152	-	- / +A3000	-	142° DAP / D8.8 DAP
RNAV1	DW116	531013.0 / 0060927.0	TF	Fly-By	182.7 / 185	8.5	-FL90 / -	-	Turn R
RNAV1	NEPOD	525657.2 / 0061029.8	TF	Fly-By	182.7 / 185	13.3	-	-	-
RNAV1	PESIT	522356.6 / 0054524.0	TF	Fly-By	155.0 / 157	36.4	-FL230 / -	-	Turn L

**ROTEV 8M CAT C/D SID RWY16**

**ROTE8M**

Nav. Spec.	WPT Name	Latitude (N)/ Longitude (W)	Path Term	Fly-By Fly-over	True track / Mag track	Distance (NM)	Upper limit / Lower limit	Speed Limit (kts)	Remarks
RNAV1	DW001	531841.3 / 0060846.5	CF	Fly-By	150.2 / 152	-	- / +A3000	230	142° DAP / D8.8 DAP
RNAV1	DW011	532118.8 / 0055849.4	TF	Fly-By	066.2 / 068	6.5	-FL90 / -	230	Turn L
RNAV1	BATED	532942.8 / 0060642.8	TF	Fly-By	330.8 / 333	9.6	-	-	Turn L
RNAV1	DW029	534521.0 / 0061621.0	TF	Fly-By	339.9 / 342	16.7	-	-	Turn R
RNAV1	ROTEV	540143.7 / 0060358.4	TF	Fly-By	024.0 / 026	18.0	-FL230 / -	-	Turn R

**SUROX 8M CAT C/D SID RWY16**

**SURO8M**

Nav. Spec.	WPT Name	Latitude (N)/ Longitude (W)	Path Term	Fly-By Fly-over	True track / Mag track	Distance (NM)	Upper limit / Lower limit	Speed Limit (kts)	Remarks
RNAV1	DW001	531841.3 / 0060846.5	CF	Fly-By	150.2 / 152	-	- / +A3000	230	142° DAP / D8.8 DAP
RNAV1	DW011	532118.8 / 0055849.4	TF	Fly-By	066.2 / 068	6.5	-FL90 / -	230	Turn L
RNAV1	BATED	532942.8 / 0060642.8	TF	Fly-By	330.8 / 333	9.6	-	-	Turn L
RNAV1	DW029	534521.0 / 0061621.0	TF	Fly-By	339.9 / 342	16.7	-	-	Turn R
RNAV1	DODIG	535746.0 / 0062934.0	TF	Fly-By	327.9 / 330	14.7	-	-	Turn L
RNAV1	SUROX	535948.0 / 0065936.5	TF	Fly-By	276.8 / 279	17.9	-FL160 / -	-	Turn L