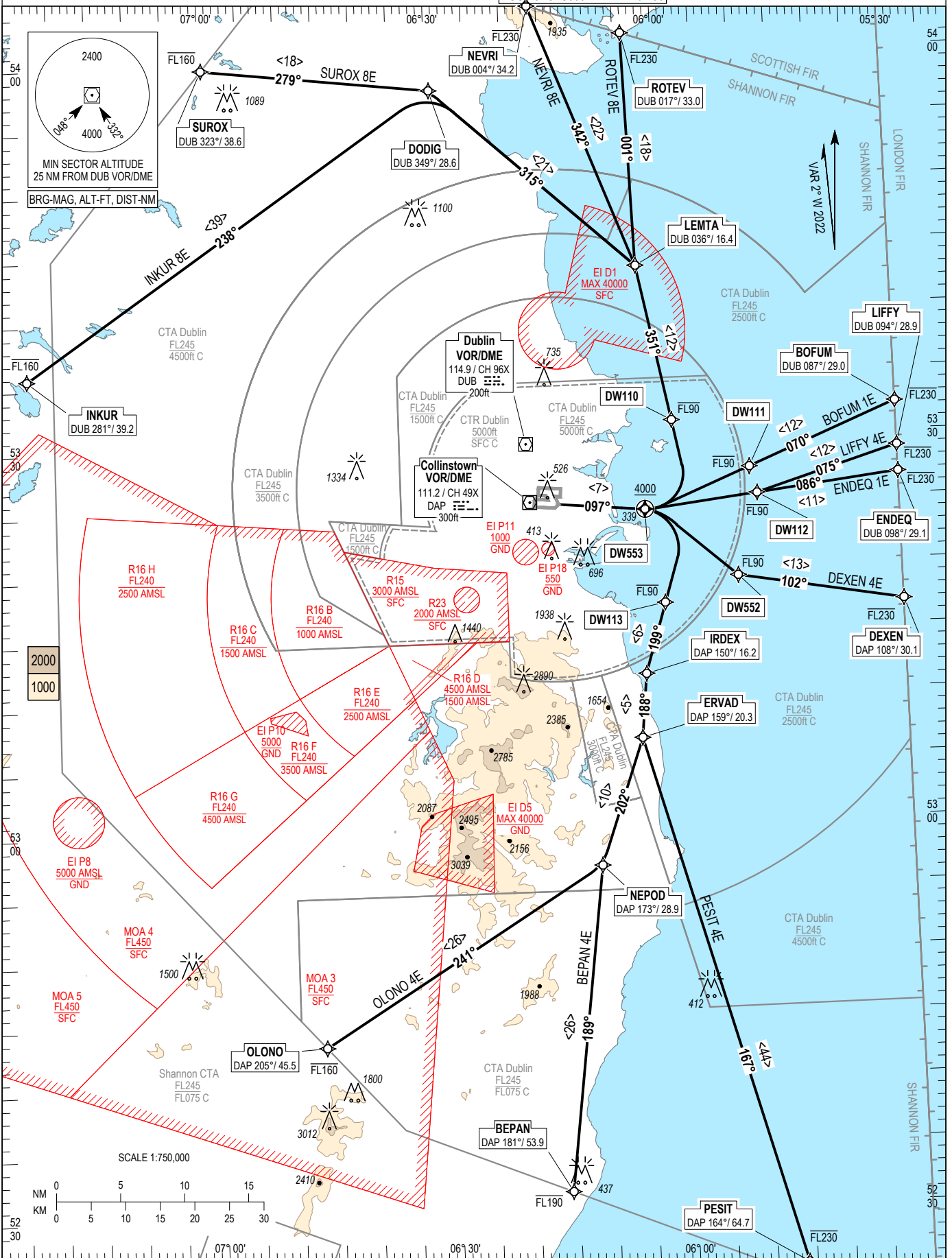


RNAV STANDARD DEPARTURE CHART INSTRUMENT (SID) - ICAO

TRANS ALT 5000ft TRANS LEVEL by ATC

ATIS TWR 124.530 118.600 ACC Lower North 132.580 ACC Lower South 120.755

DUBLIN RWY 10R, CAT C, D ENDEQ 1E, LIFFY 4E, DEXEN 4E, PESIT 4E, BEPAN 4E, OLONO 4E, BOFUM 1E, INKUR 8E, SUROX 8E, NEVRI 8E, ROTEV 8E.



CHANGE: MAG VAR and Bearings updated, Notes updated, Altitude constraints, SID Validity Indicators and Waypoints (BOFUM & ENDEQ) added.

NOTES: 1. Climb gradient 9.1% (550 ft/NM) (3.3% for obstacle clearance). 2. Integrity check fix available from RADAR. 3. On passing 2000ft contact ACC Lower North or ACC Lower South as appropriate. 4. DME/DME or GNSS navigation required. 5. For BOFUM, LIFFY, ENDEQ and DEXEN MAX IAS: 290kts above FL100.

BEPAN 4E CAT C/D SID RWY10R

BEPA4E

Nav. Spec.	WPT Name	Latitude (N)/ Longitude (W)	Path Term	Fly-By Fly-over	True track / Mag track	Distance (NM)	Upper limit / Lower limit	Speed Limit (kts)	Remarks
RNAV1	DW553	532433.5 / 0060311.7	CF	Fly-Over	095.2 / 097	-	- / +A4000	-	098° DAP / D9.0 DAP
RNAV1	DW113	531714.5 / 0060102.4	DF	Fly-By	-	-	-FL90 / -	-	Turn R
RNAV1	IRDEX	531145.1 / 0060350.1	TF	Fly-By	197.0 / 199	5.7	-	-	-
RNAV1	ERVAD	530647.1 / 0060440.4	TF	Fly-By	185.8 / 188	5.0	-	-	Turn L
RNAV1	NEPOD	525657.2 / 0061029.8	TF	Fly-By	199.7 / 202	10.5	-	-	Turn R
RNAV1	BEPAN	523136.2 / 0061549.5	TF	Fly-By	187.3 / 189	25.6	-FL190 / -	-	Turn L

BOFUM 1E CAT C/D SID RWY10R

BOFU1E

Nav. Spec.	WPT Name	Latitude (N)/ Longitude (W)	Path Term	Fly-By Fly-over	True track / Mag track	Distance (NM)	Upper limit / Lower limit	Speed Limit (kts)	Remarks
RNAV1	DW553	532433.5 / 0060311.7	CF	Fly-Over	095.2 / 097	-	- / +A4000	-	098° DAP / D9.0 DAP
RNAV1	DW111	532734.8 / 0054921.4	DF	Fly-By	-	-	-FL90 / -	-	Turn L
RNAV1	BOFUM	533214.0 / 0053000.0	TF	Fly-By	067.9 / 070	12.5	-FL230 / -	290	-

DEXEN 4E CAT C/D SID RWY10R

DEXE4E

Nav. Spec.	WPT Name	Latitude (N)/ Longitude (W)	Path Term	Fly-By Fly-over	True track / Mag track	Distance (NM)	Upper limit / Lower limit	Speed Limit (kts)	Remarks
RNAV1	DW553	532433.5 / 0060311.7	CF	Fly-Over	095.2 / 097	-	- / +A4000	-	098° DAP / D9.0 DAP
RNAV1	DW552	531909.3 / 0055123.7	DF	Fly-By	-	-	-FL90 / -	-	Turn R
RNAV1	DEXEN	531649.4 / 0053000.0	TF	Fly-By	100.2 / 102	13.0	-FL230 / -	290	Turn L

ENDEQ 1E CAT C/D SID RWY10R

ENDE1E

Nav. Spec.	WPT Name	Latitude (N)/ Longitude (W)	Path Term	Fly-By Fly-over	True track / Mag track	Distance (NM)	Upper limit / Lower limit	Speed Limit (kts)	Remarks
RNAV1	DW553	532433.5 / 0060311.7	CF	Fly-Over	095.2 / 097	-	- / +A4000	-	098° DAP / D9.0 DAP
RNAV1	DW112	532530.5 / 0054829.7	DF	Fly-By	-	-	-FL90 / -	-	Turn L
RNAV1	ENDEQ	532644.4 / 0053000.0	TF	Fly-By	083.5 / 086	11.1	-FL230 / -	290	-

INKUR 8E CAT C/D SID RWY10R

INKU8E

Nav. Spec.	WPT Name	Latitude (N)/ Longitude (W)	Path Term	Fly-By Fly-over	True track / Mag track	Distance (NM)	Upper limit / Lower limit	Speed Limit (kts)	Remarks
RNAV1	DW553	532433.5 / 0060311.7	CF	Fly-Over	095.2 / 097	-	- / +A4000	-	098° DAP / D9.0 DAP
RNAV1	DW110	533126.2 / 0055916.4	DF	Fly-By	-	-	-FL90 / -	-	Turn L
RNAV1	LEMTA	534334.3 / 0060311.6	TF	Fly-By	349.2 / 351	12.4	-	-	-
RNAV1	DODIG	535746.0 / 0062934.0	TF	Fly-By	312.5 / 315	21.1	-	-	Turn L
RNAV1	INKUR	533551.3 / 0072328.6	TF	Fly-By	235.9 / 238	38.8	-FL160 / -	-	Turn L

LIFFY 4E CAT C/D SID RWY10R

LIFF4E

Nav. Spec.	WPT Name	Latitude (N)/ Longitude (W)	Path Term	Fly-By Fly-over	True track / Mag track	Distance (NM)	Upper limit / Lower limit	Speed Limit (kts)	Remarks
RNAV1	DW553	532433.5 / 0060311.7	CF	Fly-Over	095.2 / 097	-	- / +A4000	-	098° DAP / D9.0 DAP
RNAV1	DW112	532530.5 / 0054829.7	DF	Fly-By	-	-	-FL90 / -	-	Turn L
RNAV1	LIFFY	532848.3 / 0053000.0	TF	Fly-By	073.3 / 075	11.5	-FL230 / -	290	Turn L

NEVRI 8E CAT C/D SID RWY10R

NEVR8E

Nav. Spec.	WPT Name	Latitude (N)/ Longitude (W)	Path Term	Fly-By Fly-over	True track / Mag track	Distance (NM)	Upper limit / Lower limit	Speed Limit (kts)	Remarks
RNAV1	DW553	532433.5 / 0060311.7	CF	Fly-Over	095.2 / 097	-	- / +A4000	-	098° DAP / D9.0 DAP
RNAV1	DW110	533126.2 / 0055916.4	DF	Fly-By	-	-	-FL90 / -	-	Turn L
RNAV1	LEMTA	534334.3 / 0060311.6	TF	Fly-By	349.2 / 351	12.4	-	-	-
RNAV1	NEVRI	540406.0 / 0061611.4	TF	Fly-By	339.6 / 342	22.0	-FL230 / -	-	Turn L

OLONO 4E CAT C/D SID RWY10R

OLON4E

Nav. Spec.	WPT Name	Latitude (N)/ Longitude (W)	Path Term	Fly-By Fly-over	True track / Mag track	Distance (NM)	Upper limit / Lower limit	Speed Limit (kts)	Remarks
RNAV1	DW553	532433.5 / 0060311.7	CF	Fly-Over	095.2 / 097	-	- / +A4000	-	098° DAP / D9.0 DAP
RNAV1	DW113	531714.5 / 0060102.4	DF	Fly-By	-	-	-FL90 / -	-	Turn R
RNAV1	IRDEX	531145.1 / 0060350.1	TF	Fly-By	197.0 / 199	5.7	-	-	-
RNAV1	ERVAD	530647.1 / 0060440.4	TF	Fly-By	185.8 / 188	5.0	-	-	Turn L
RNAV1	NEPOD	525657.2 / 0061029.8	TF	Fly-By	199.7 / 202	10.5	-	-	Turn R
RNAV1	OLONO	524323.1 / 0064644.4	TF	Fly-By	238.5 / 241	25.8	-FL160 / -	-	Turn R

PESIT 4E CAT C/D SID RWY10R

PESI4E

Nav. Spec.	WPT Name	Latitude (N)/ Longitude (W)	Path Term	Fly-By Fly-over	True track / Mag track	Distance (NM)	Upper limit / Lower limit	Speed Limit (kts)	Remarks
RNAV1	DW553	532433.5 / 0060311.7	CF	Fly-Over	095.2 / 097	-	- / +A4000	-	098° DAP / D9.0 DAP
RNAV1	DW113	531714.5 / 0060102.4	DF	Fly-By	-	-	-FL90 / -	-	Turn R
RNAV1	IRDEX	531145.1 / 0060350.1	TF	Fly-By	197.0 / 199	5.7	-	-	-
RNAV1	ERVAD	530647.1 / 0060440.4	TF	Fly-By	185.8 / 188	5.0	-	-	Turn L
RNAV1	PESIT	522356.6 / 0054524.0	TF	Fly-By	164.6 / 167	44.5	-FL230 / -	-	Turn L

ROTEV 8E CAT C/D SID RWY10R

ROTE8E

Nav. Spec.	WPT Name	Latitude (N)/ Longitude (W)	Path Term	Fly-By Fly-over	True track / Mag track	Distance (NM)	Upper limit / Lower limit	Speed Limit (kts)	Remarks
RNAV1	DW553	532433.5 / 0060311.7	CF	Fly-Over	095.2 / 097	-	- / +A4000	-	098° DAP / D9.0 DAP
RNAV1	DW110	533126.2 / 0055916.4	DF	Fly-By	-	-	-FL90 / -	-	Turn L
RNAV1	LEMTA	534334.3 / 0060311.6	TF	Fly-By	349.2 / 351	12.4	-	-	-
RNAV1	ROTEV	540143.7 / 0060358.4	TF	Fly-By	358.6 / 001	18.2	-FL230 / -	-	Turn R

SUROX 8E CAT C/D SID RWY10R

SURO8E

Nav. Spec.	WPT Name	Latitude (N)/ Longitude (W)	Path Term	Fly-By Fly-over	True track / Mag track	Distance (NM)	Upper limit / Lower limit	Speed Limit (kts)	Remarks
RNAV1	DW553	532433.5 / 0060311.7	CF	Fly-Over	095.2 / 097	-	- / +A4000	-	098° DAP / D9.0 DAP
RNAV1	DW110	533126.2 / 0055916.4	DF	Fly-By	-	-	-FL90 / -	-	Turn L
RNAV1	LEMTA	534334.3 / 0060311.6	TF	Fly-By	349.2 / 351	12.4	-	-	-
RNAV1	DODIG	535746.0 / 0062934.0	TF	Fly-By	312.5 / 315	21.1	-	-	Turn L
RNAV1	SUROX	535948.0 / 0065936.5	TF	Fly-By	276.8 / 279	17.9	-FL160 / -	-	Turn L