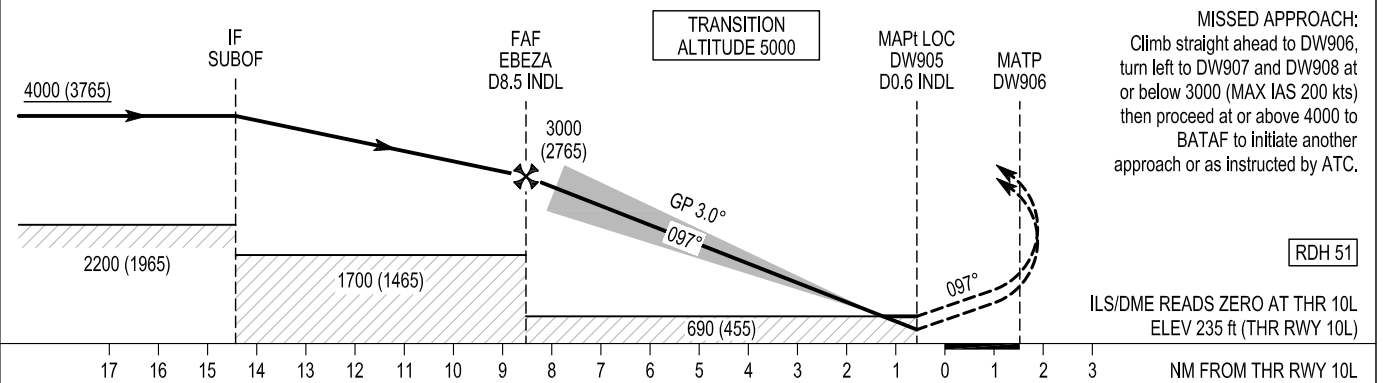


CHANGE: Verso page, AD elevation, MAG VAR, OCA (H), Profile, MA text, Notes, Warning removed, BATAF alt restriction, HOLD max 200 kts, FAF/FAF changed to FAF.



OCA (H)		A	B	C	D
Straight-in Approach	CAT I	485 (250)	495 (260)	505 (270)	515 (280)
	CAT II	396 (161)	413 (178)	426 (191)	439 (204)
	LOC	690 (455)			
Visual Manoeuvring (Heights AAL)		830 (587)		1100 (857)	

**NOTE:**  
 1. RNAV 1 required for initial and missed approach.  
 2. DME required for LOC approach.  
 3. Timing not authorised for determining the MAPt.

Recommended LOC Profile on Final Approach							
DIST from THR (NM)	8	7	6	5	4	3	2
ALT / HT (ft)	2835 (2600)	2515 (2280)	2195 (1960)	1880 (1645)	1560 (1325)	1240 (1005)	925 (690)
Ground Speed	kts		80	100	110	120	140
Descent rate gradient - 5.24% (3.0°)	ft / min		430	530	580	640	740

**Dublin INITIAL APP ILS RWY 10L via BATAF**

Nav. Spec.	WPT Name	Latitude (N) / Longitude (W)	Path Term	Fly-By Fly-Over	True track / Mag track (°)	Distance (NM)	Upper limit / Lower limit (ft)	Speed limit (kts)	Remarks
RNAV 1	BATAF	533236.0 / 0062320.5	IF	-	-	-	- / +A4000	-	-
RNAV 1	IFBAP	533230.8 / 0064006.2	TF	Fly-By	269.6 / 271	10.0	- / +A4000	-	-
RNAV 1	SUBOF	532732.5 / 0064052.5	TF	Fly-By	185.3 / 187	5.0	- / +A4000	220	Turn L

**Dublin INITIAL APP ILS RWY 10L via IFBAP**

Nav. Spec.	WPT Name	Latitude (N) / Longitude (W)	Path Term	Fly-By Fly-Over	True track / Mag track (°)	Distance (NM)	Upper limit / Lower limit (ft)	Speed limit (kts)	Remarks
RNAV 1	IFBAP	533230.8 / 0064006.2	IF	-	-	-	- / +A4000	-	-
RNAV 1	SUBOF	532732.5 / 0064052.5	TF	Fly-By	185.3 / 187	5.0	- / +A4000	220	-

**Dublin INITIAL APP ILS RWY 10L via OSLEX**

Nav. Spec.	WPT Name	Latitude (N) / Longitude (W)	Path Term	Fly-By Fly-Over	True track / Mag track (°)	Distance (NM)	Upper limit / Lower limit (ft)	Speed limit (kts)	Remarks
RNAV 1	OSLEX	532155.8 / 0064144.5	IF	-	-	-	- / +A5000	-	-
RNAV 1	SUBOF	532732.5 / 0064052.5	TF	Fly-By	005.3 / 007	5.6	- / +A4000	220	-

**Dublin ILS CAT I and II or LOC Approach RWY 10L**

Descent Angle:	3.00°	
Fix	FAF (D8.5 INDL – EBEZA)	MAPt (D0.6 INDL – DW905)
Fix Coordinates	532700.2 N 0063102.2 W	532616.9 N 0061746.9 W
Fix Formation Bearing T	275.34 LOC INDL	275.28 LOC INDL
Fix Formation Distances	8.51 INDL	0.56 INDL

**Dublin MISSED APP ILS RWY 10L**

Nav. Spec.	WPT Name	Latitude (N) / Longitude (W)	Path Term	Fly-By Fly-Over	True track / Mag track (°)	Distance (NM)	Upper limit / Lower limit (ft)	Speed limit (kts)	Remarks
RNAV 1	DW906	532605.4 / 0061417.6	CF	Fly-Over	095.2 / 097	-	-	200	075° DAP / D2.4 DAP
RNAV 1	DW907	532840.1 / 0060453.0	DF	Fly-By	-	-	-	200	Turn L
RNAV 1	DW908	533244.8 / 0061235.1	TF	Fly-By	311.7 / 313	6.2	-A3000 / -	200	Turn L
RNAV 1	BATAF	533236.0 / 0062320.5	TF	Fly-By	268.8 / 270	6.4	- / +A4000	-	Turn L

**Hold Identification – SUBOF**

Holding Fix	Latitude (N) / Longitude (W)	Inbound True Track (degrees)	Inbound Mag Track (degrees)	Maximum Indicated Airspeed (kts)	Minimum Holding Altitude/ Level (FL/ft)	Maximum Holding Altitude/ Level (FL/ft)	Outbound time (min)	Direction of Turn
SUBOF	532732.5 / 0064052.5	095.1	097	200	+A4000	-FL100	1	L