

TWR 118.700  
GND 121.800  
APP 121.400  
ATIS 130.955

AGINI 2D, RIKUL 2D, DIGAN 2D, TIPUR 2D, KURUM 2D,  
BUNON 3D, LUPOR 3D, UNBEG 3D, ERABI 3D, MOMIN 3D.

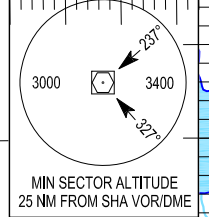
VERTICAL PLANNING INFORMATION

Pilots should plan for possible descent clearance as detailed in the table below.  
**ACTUAL DESCENT CLEARANCE WILL BE AS DIRECTED BY ATC**  
TOBRI at FL060 or above  
GILOG at FL060 or above

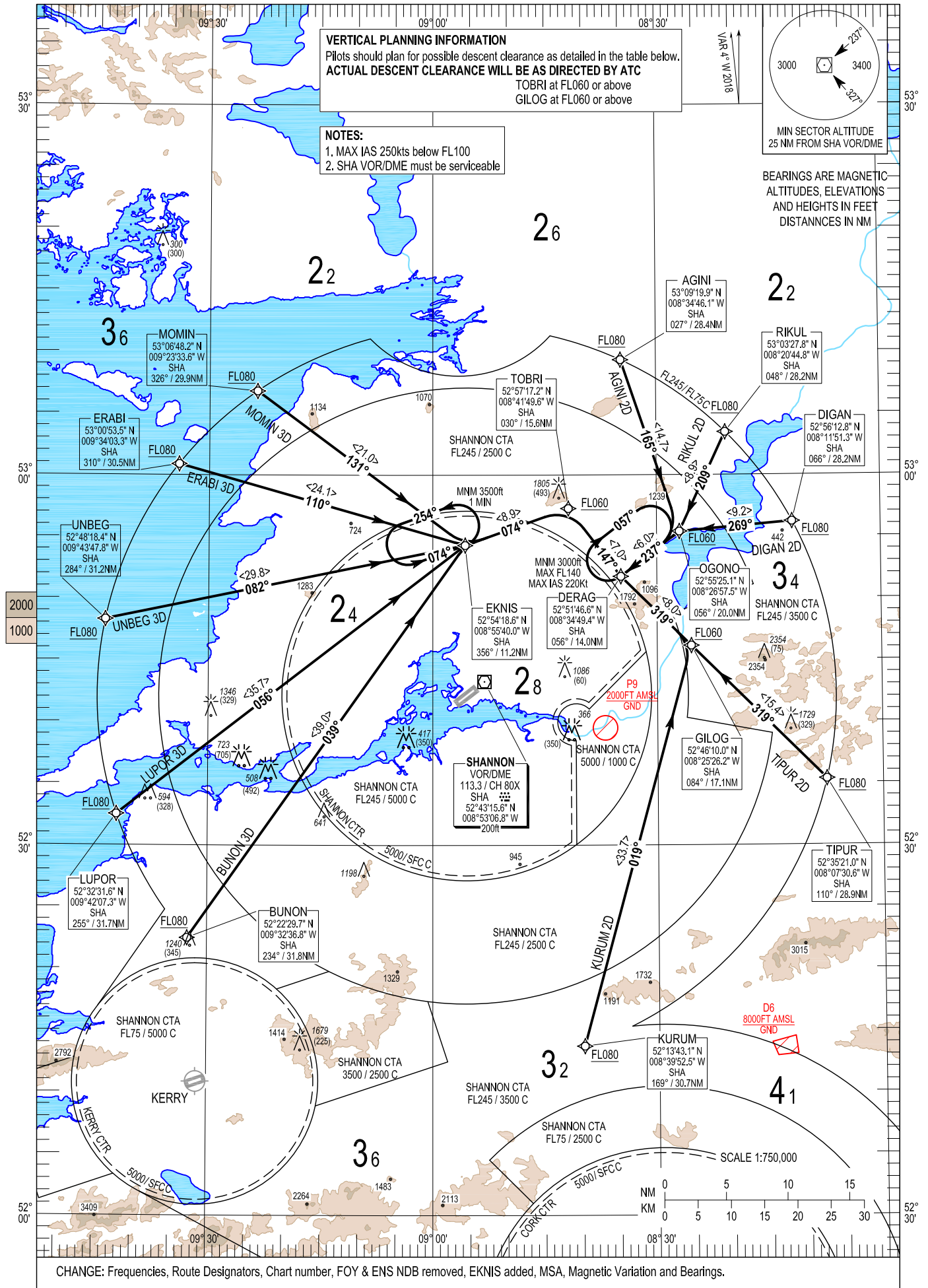
NOTES:

- 1. MAX IAS 250kts below FL100
- 2. SHA VOR/DME must be serviceable

VAR  $\phi$  W 2018



BEARINGS ARE MAGNETIC  
ALTITUDES, ELEVATIONS  
AND HEIGHTS IN FEET  
DISTANCES IN NM



CHANGE: Frequencies, Route Designators, Chart number, FOY & ENS NDB removed, EKNIS added, MSA, Magnetic Variation and Bearings.

## 06 DEC 2018

## AGIN2D CAT A/B/C/D STAR RWY24

## AGIN2D

Navigation Performance	Path Terminator	WPT Name	Latitude (N), Longitude (W)	Fly-By or Fly-Over	Distance (NM)	True track / Magnetic track	Upper limit / Lower limit	Speed Limit (kts)	Remarks
RNAV 1	IF	AGINI	530919.9 / 0083446.1	-	-	-	- / FL080	-	-
RNAV 1	TF	OGONO	525525.1 / 0082657.5	Fly-By	14.7	161.3 / 165	- / FL060	-	-
RNAV 1	TF	DERAG	525146.6 / 0083449.4	Fly-By	6.0	232.6 / 237	- / 3000	220	IF

## BUNON3D CAT A/B/C/D STAR RWY24

## BUNO3D

Navigation Performance	Path Terminator	WPT Name	Latitude (N), Longitude (W)	Fly-By or Fly-Over	Distance (NM)	True track / Magnetic track	Upper limit / Lower limit	Speed Limit (kts)	Remarks
RNAV 1	IF	BUNON	522229.7 / 0093236.8	-	-	-	- / FL080	-	-
RNAV 1	TF	EKNIS	525418.6 / 0085540.0	Fly-By	39.0	035.0 / 039	-	-	-
RNAV 1	TF	TOBRI	525717.2 / 0084149.6	Fly-By	8.9	070.3 / 074	- / FL060	-	-
RNAV 1	TF	DERAG	525146.6 / 0083449.4	Fly-By	7.0	142.4 / 147	- / 3000	220	IF

## DIGAN2D CAT A/B/C/D STAR RWY24

## DIGA2D

Navigation Performance	Path Terminator	WPT Name	Latitude (N), Longitude (W)	Fly-By or Fly-Over	Distance (NM)	True track / Magnetic track	Upper limit / Lower limit	Speed Limit (kts)	Remarks
RNAV 1	IF	DIGAN	525612.8 / 0081151.3	-	-	-	- / FL080	-	-
RNAV 1	TF	OGONO	525525.1 / 0082657.5	Fly-By	9.2	265.1 / 269	- / FL060	-	-
RNAV 1	TF	DERAG	525146.6 / 0083449.4	Fly-By	6.0	232.6 / 237	- / 3000	220	IF

## ERAB3D CAT A/B/C/D STAR RWY24

## ERAB3D

Navigation Performance	Path Terminator	WPT Name	Latitude (N), Longitude (W)	Fly-By or Fly-Over	Distance (NM)	True track / Magnetic track	Upper limit / Lower limit	Speed Limit (kts)	Remarks
RNAV 1	IF	ERABI	530053.5 / 0093403.3	-	-	-	- / FL080	-	-
RNAV 1	TF	EKNIS	525418.6 / 0085540.0	Fly-By	24.1	105.6 / 110	-	-	-
RNAV 1	TF	TOBRI	525717.2 / 0084149.6	Fly-By	8.9	070.3 / 074	- / FL060	-	-
RNAV 1	TF	DERAG	525146.6 / 0083449.4	Fly-By	7.0	142.4 / 147	- / 3000	220	IF

## KURUM2D CAT A/B/C/D STAR RWY24

## KURU2D

Navigation Performance	Path Terminator	WPT Name	Latitude (N), Longitude (W)	Fly-By or Fly-Over	Distance (NM)	True track / Magnetic track	Upper limit / Lower limit	Speed Limit (kts)	Remarks
RNAV 1	IF	KURUM	521343.1 / 0083952.5	-	-	-	- / FL080	-	-
RNAV 1	TF	GILOG	524610.0 / 0082526.2	Fly-By	33.7	015.1 / 019	- / FL060	-	-
RNAV 1	TF	DERAG	525146.6 / 0083449.4	Fly-By	8.0	314.7 / 319	- / 3000	220	IF

## LUPOR3D CAT A/B/C/D STAR RWY24

## LUPO3D

Navigation Performance	Path Terminator	WPT Name	Latitude (N), Longitude (W)	Fly-By or Fly-Over	Distance (NM)	True track / Magnetic track	Upper limit / Lower limit	Speed Limit (kts)	Remarks
RNAV 1	IF	LUPOR	523231.6 / 0094207.3	-	-	-	- / FL080	-	-
RNAV 1	TF	EKNIS	525418.6 / 0085540.0	Fly-By	35.7	052.0 / 056	-	-	-
RNAV 1	TF	TOBRI	525717.2 / 0084149.6	Fly-By	8.9	070.3 / 074	- / FL060	-	-
RNAV 1	TF	DERAG	525146.6 / 0083449.4	Fly-By	7.0	142.4 / 147	- / 3000	220	IF

## MOMIN3D CAT A/B/C/D STAR RWY24

## MOMI3D

Navigation Performance	Path Terminator	WPT Name	Latitude (N), Longitude (W)	Fly-By or Fly-Over	Distance (NM)	True track / Magnetic track	Upper limit / Lower limit	Speed Limit (kts)	Remarks
RNAV 1	IF	MOMIN	530648.2 / 0092333.6	-	-	-	- / FL080	-	-
RNAV 1	TF	EKNIS	525418.6 / 0085540.0	Fly-By	21.0	126.4 / 131	-	-	-
RNAV 1	TF	TOBRI	525717.2 / 0084149.6	Fly-By	8.9	070.3 / 074	- / FL060	-	-
RNAV 1	TF	DERAG	525146.6 / 0083449.4	Fly-By	7.0	142.4 / 147	- / 3000	220	IF

## RIKUL2D CAT A/B/C/D STAR RWY24

## RIKU2D

Navigation Performance	Path Terminator	WPT Name	Latitude (N), Longitude (W)	Fly-By or Fly-Over	Distance (NM)	True track / Magnetic track	Upper limit / Lower limit	Speed Limit (kts)	Remarks
RNAV 1	IF	RIKUL	530327.8 / 0082044.8	-	-	-	- / FL080	-	-
RNAV 1	TF	OGONO	525525.1 / 0082657.5	Fly-By	8.9	205.0 / 209	- / FL060	-	-
RNAV 1	TF	DERAG	525146.6 / 0083449.4	Fly-By	6.0	232.6 / 237	- / 3000	220	IF

## TIPUR2DCAT A/B/C/D STAR RWY24

## TIPU2D

Navigation Performance	Path Terminator	WPT Name	Latitude (N), Longitude (W)	Fly-By or Fly-Over	Distance (NM)	True track / Magnetic track	Upper limit / Lower limit	Speed Limit (kts)	Remarks
RNAV 1	IF	TIPUR	523521.0 / 0080730.6	-	-	-	- / FL080	-	-
RNAV 1	TF	GILOG	524610.0 / 0082526.2	Fly-By	15.4	314.9 / 319	- / FL060	-	-
RNAV 1	TF	DERAG	525146.6 / 0083449.4	Fly-By	8.0	314.7 / 319	- / 3000	220	IF

## UNBEG3D CAT A/B/C/D STAR RWY24

## UNBE3D

Navigation Performance	Path Terminator	WPT Name	Latitude (N), Longitude (W)	Fly-By or Fly-Over	Distance (NM)	True track / Magnetic track	Upper limit / Lower limit	Speed Limit (kts)	Remarks
RNAV 1	IF	UNBEG	524818.4 / 0094347.8	-	-	-	- / FL080	-	-
RNAV 1	TF	EKNIS	525418.6 / 0085540.0	Fly-By	29.8	078.0 / 082	-	-	-
RNAV 1	TF	TOBRI	525717.2 / 0084149.6	Fly-By	8.9	070.3 / 074	- / FL060	-	-
RNAV 1	TF	DERAG	525146.6 / 0083449.4	Fly-By	7.0	142.4 / 147	- / 3000	220	IF

## Hold Identification – EINN AD 2.24-8

Holding Fix	Latitude (N) / Longitude (W)	Inbound True Track (degrees)	Inbound Mag Track (degrees)	Maximum Indicated Airspeed (kts)	Maximum / Minimum Holding Altitude/ Level (FL/ft)	Outbound Time (min)	Direction of Turn
DERAG	525146.6 / 0083449.4	232.6	237	220	FL140/3000	1	R
EKNIS	525418.6 / 0085540.0	070.2	074	-	3500	-	1