

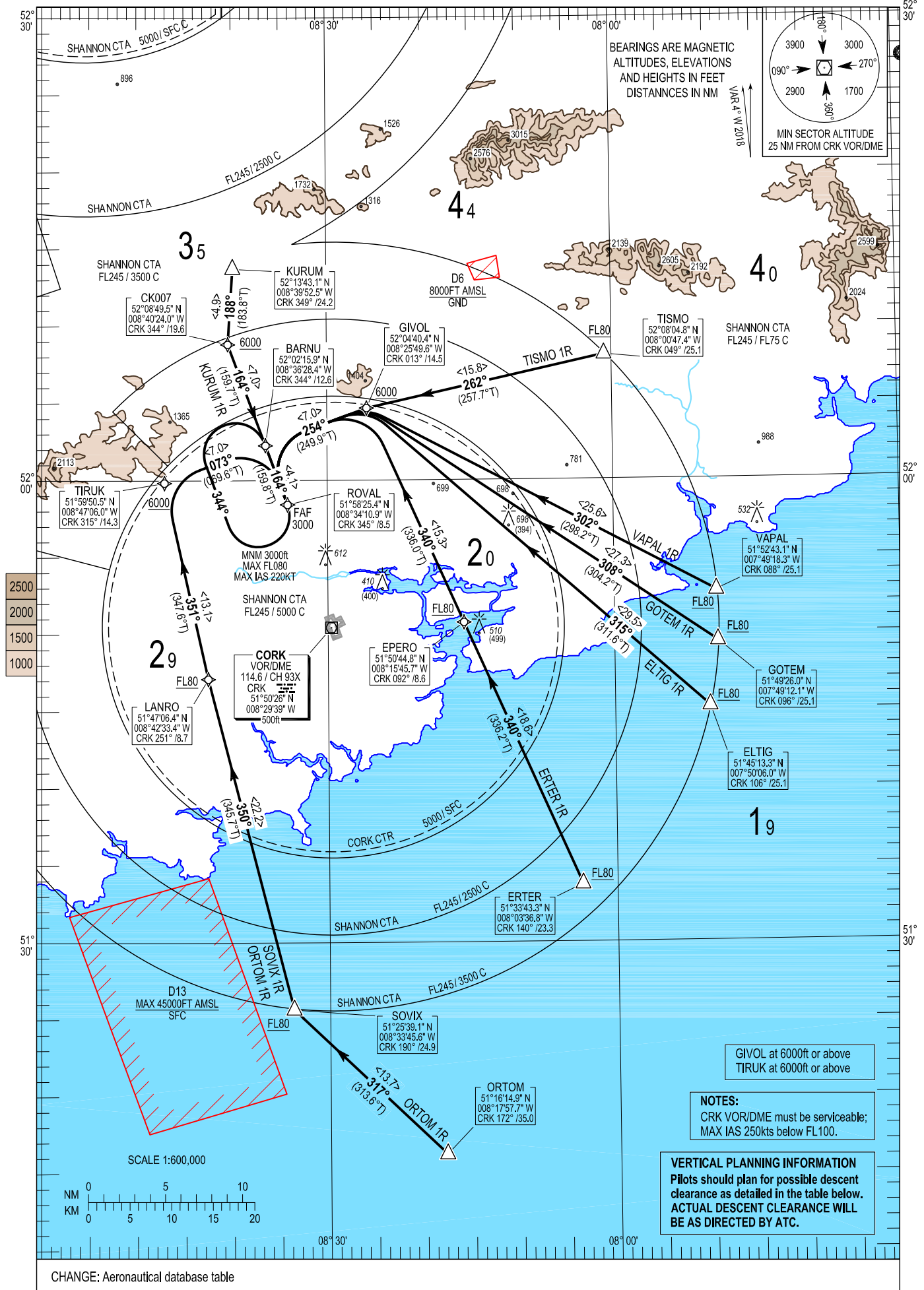
RNAV (GNSS) STANDARD ARRIVAL CHART
INSTRUMENT (STAR) - ICAO

TRANS ALT 5000ft
TRANS LEVEL by ATC

TWR	119.300
GND	121.850
ATIS	120.925
CRK APP	119.900

CORK RWY 16

TISMO 1R, VAPAL 1R, GOTEM 1R, ELTIG 1R,
ORTOM 1R, SOVIX 1R, KURUM 1R, ERTER 1R.



11 OCT 2018

ELTIG1R CAT A/B/C/D STAR RWY16

ELTI1R

Navigation Performance	Path Terminator	WPT Name	Latitude (N), Longitude (W)	Fly-By or Fly-Over	Distance (NM)	True track / Magnetic track	Upper limit / Lower limit	Speed Limit (kts)	Remarks
RNAV 1	IF	ELTIG	514513.3 / 0075006.0	-	-	-	- / FL080	-	-
RNAV 1	TF	GIVOL	520440.4 / 0082549.6	Fly-By	29.5	311.6 / 315	- / 6000	-	-
RNAV 1	TF	BARNU	520215.9 / 0083628.4	Fly-By	7.0	249.9 / 254	-	220	-
RNAV 1	TF	ROVAL	515825.4 / 0083410.9	Fly-By	4.1	159.8 / 164	3000 / 3000	-	-

ERTER1R CAT A/B/C/D STAR RWY16

ERTE1R

Navigation Performance	Path Terminator	WPT Name	Latitude (N), Longitude (W)	Fly-By or Fly-Over	Distance (NM)	True track / Magnetic track	Upper limit / Lower limit	Speed Limit (kts)	Remarks
RNAV 1	IF	ERTER	513343.3 / 0080336.8	-	-	-	- / FL080	-	-
RNAV 1	TF	EPERO	515044.8 / 0081545.7	Fly-By	18.6	336.2 / 340	- / FL080	-	-
RNAV 1	TF	GIVOL	520440.4 / 0082549.6	Fly-By	15.3	336.0 / 340	- / 6000	-	-
RNAV 1	TF	BARNU	520215.9 / 0083628.4	Fly-By	7.0	249.9 / 254	-	220	-
RNAV 1	TF	ROVAL	515825.4 / 0083410.9	Fly-By	4.1	159.8 / 164	3000 / 3000	-	-

GOTEM1R CAT A/B/C/D STAR RWY16

GOTE1R

Navigation Performance	Path Terminator	WPT Name	Latitude (N), Longitude (W)	Fly-By or Fly-Over	Distance (NM)	True track / Magnetic track	Upper limit / Lower limit	Speed Limit (kts)	Remarks
RNAV 1	IF	GOTEM	514926.0 / 0074912.1	-	-	-	- / FL080	-	-
RNAV 1	TF	GIVOL	520440.4 / 0082549.6	Fly-By	27.3	304.2 / 308	- / 6000	-	-
RNAV 1	TF	BARNU	520215.9 / 0083628.4	Fly-By	7.0	249.9 / 254	-	220	-
RNAV 1	TF	ROVAL	515825.4 / 0083410.9	Fly-By	4.1	159.8 / 164	3000 / 3000	-	-

KURUM1R CAT A/B/C/D STAR RWY16

KURU1R

Navigation Performance	Path Terminator	WPT Name	Latitude (N), Longitude (W)	Fly-By or Fly-Over	Distance (NM)	True track / Magnetic track	Upper limit / Lower limit	Speed Limit (kts)	Remarks
RNAV 1	IF	KURUM	521343.1 / 0083952.5	-	-	-	-	-	-
RNAV 1	TF	CK007	520849.5 / 0084024.0	Fly-By	4.9	183.8 / 188	- / 6000	-	-
RNAV 1	TF	BARNU	520215.9 / 0083628.4	Fly-By	7.0	159.7 / 164	-	220	-
RNAV 1	TF	ROVAL	515825.4 / 0083410.9	Fly-By	4.1	159.8 / 164	3000 / 3000	-	-

ORTOM1R CAT A/B/C/D STAR RWY16

ORTO1R

Navigation Performance	Path Terminator	WPT Name	Latitude (N), Longitude (W)	Fly-By or Fly-Over	Distance (NM)	True track / Magnetic track	Upper limit / Lower limit	Speed Limit (kts)	Remarks
RNAV 1	IF	ORTOM	511614.9 / 0081757.7	-	-	-	-	-	-
RNAV 1	TF	SOVIX	512539.1 / 0083345.6	Fly-By	13.7	313.6 / 317	-	-	-
RNAV 1	TF	LANRO	514706.4 / 0084233.4	Fly-By	22.2	345.7 / 350	- / FL080	-	-
RNAV 1	TF	TIRUK	515950.5 / 0084706.0	Fly-By	13.1	347.6 / 351	- / 6000	-	-
RNAV 1	TF	BARNU	520215.9 / 0083628.4	Fly-By	7.0	069.6 / 073	-	220	-
RNAV 1	TF	ROVAL	515825.4 / 0083410.9	Fly-By	4.1	159.8 / 164	3000 / 3000	-	-

SOVIX1R CAT A/B/C/D STAR RWY16

SOVI1R

Navigation Performance	Path Terminator	WPT Name	Latitude (N), Longitude (W)	Fly-By or Fly-Over	Distance (NM)	True track / Magnetic track	Upper limit / Lower limit	Speed Limit (kts)	Remarks
RNAV 1	IF	SOVIX	512539.1 / 0083345.6	-	-	-	- / FL080	-	-
RNAV 1	TF	LANRO	514706.4 / 0084233.4	Fly-By	22.2	345.7 / 350	- / FL080	-	-
RNAV 1	TF	TIRUK	515950.5 / 0084706.0	Fly-By	13.1	347.6 / 351	- / 6000	-	-
RNAV 1	TF	BARNU	520215.9 / 0083628.4	Fly-By	7.0	069.6 / 073	-	220	-
RNAV 1	TF	ROVAL	515825.4 / 0083410.9	Fly-By	4.1	159.8 / 164	3000 / 3000	-	-

TISMO1R CAT A/B/C/D STAR RWY16

TISM1R

Navigation Performance	Path Terminator	WPT Name	Latitude (N), Longitude (W)	Fly-By or Fly-Over	Distance (NM)	True track / Magnetic track	Upper limit / Lower limit	Speed Limit (kts)	Remarks
RNAV 1	IF	TISMO	520804.8 / 0080047.4	-	-	-	- / FL080	-	-
RNAV 1	TF	GIVOL	520440.4 / 0082549.6	Fly-By	15.8	257.7 / 262	- / 6000	-	-
RNAV 1	TF	BARNU	520215.9 / 0083628.4	Fly-By	7.0	249.9 / 254	-	220	-
RNAV 1	TF	ROVAL	515825.4 / 0083410.9	Fly-By	4.1	159.8 / 164	3000 / 3000	-	-

VAPAL1R CAT A/B/C/D STAR RWY16

VAPA1R

Navigation Performance	Path Terminator	WPT Name	Latitude (N), Longitude (W)	Fly-By or Fly-Over	Distance (NM)	True track / Magnetic track	Upper limit / Lower limit	Speed Limit (kts)	Remarks
RNAV 1	IF	VAPAL	515243.1 / 0074918.3	-	-	-	- / FL080	-	-
RNAV 1	TF	GIVOL	520440.4 / 0082549.6	Fly-By	25.6	298.2 / 302	- / 6000	-	-
RNAV 1	TF	BARNU	520215.9 / 0083628.4	Fly-By	7.0	249.9 / 254	-	220	-
RNAV 1	TF	ROVAL	515825.4 / 0083410.9	Fly-By	4.1	159.8 / 164	3000 / 3000	-	-

Hold Identification – EICK AD 2.24-14

Holding Fix	Latitude (N) / Longitude (W)	Inbound True Track (degrees)	Inbound Mag Track (degrees)	Maximum Indicated Airspeed (kts)	Maximum / Minimum Holding Altitude / Level (FL/ft)	Outbound Time (min)	Direction of Turn
ROVAL	515825.4 / 0083410.9	159.8	164	220	FL080/3000	1	R