

VISUAL APPROACH CHART - ICAO

AERODROME ELEV. 31 FT

TWR 129.800 AFIS 129.800 (Check NOTAM'S for hours of operations) ATIS 129.925 EMERGENCY 121.500

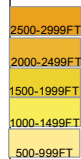
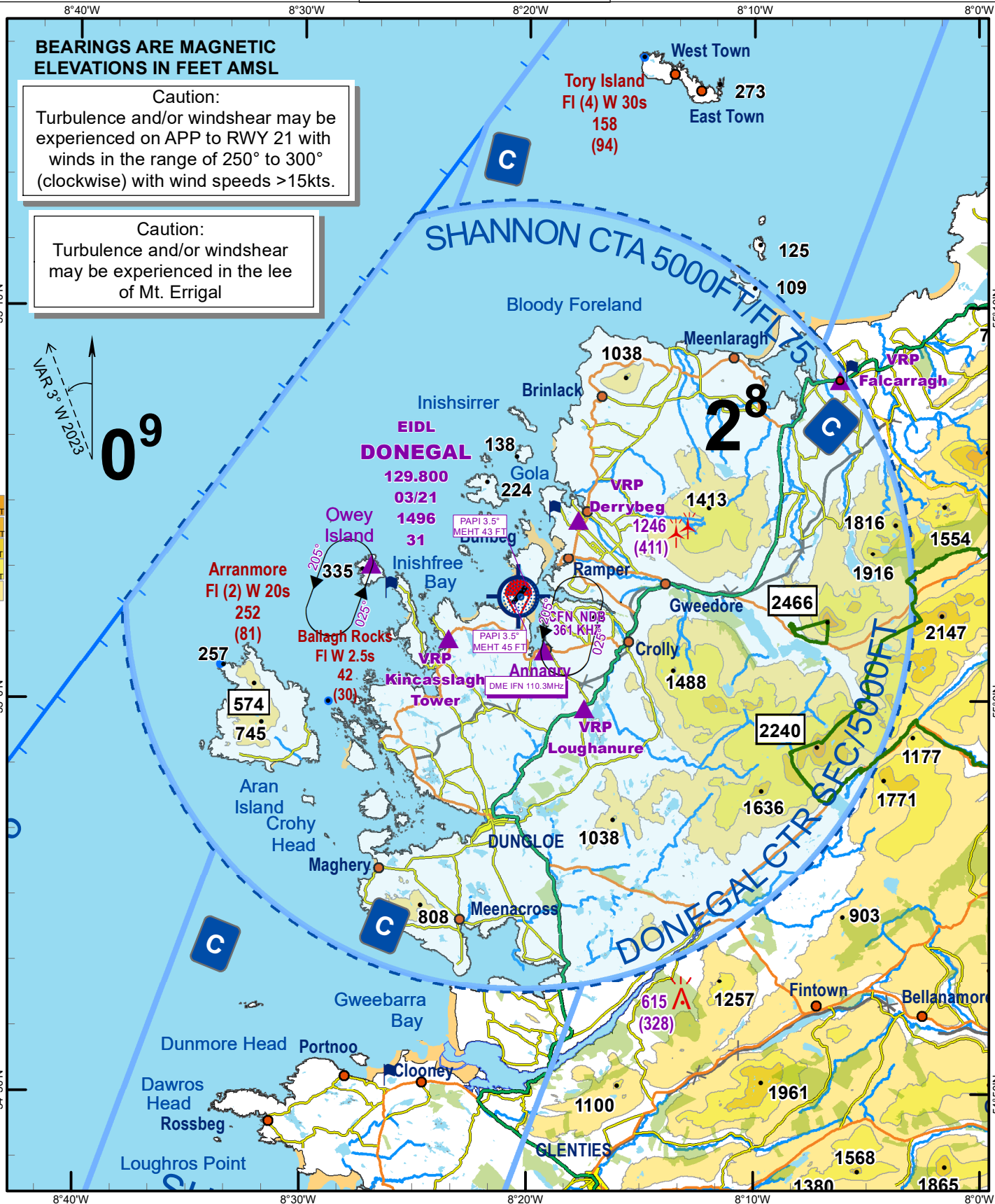
CONSULT NOTAM FOR LATEST INFORMATION

DONEGAL / DONEGAL

BEARINGS ARE MAGNETIC ELEVATIONS IN FEET AMSL

Caution: Turbulence and/or windshear may be experienced on APP to RWY 21 with winds in the range of 250° to 300° (clockwise) with wind speeds >15kts.

Caution: Turbulence and/or windshear may be experienced in the lee of Mt. Errigal

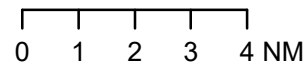


Visual Holding Pattern (Based on TAS 120 kts)

Annagry Hold 55°01' 09"N 008°18' 44" W  
Owey Hold 55°03' 26" N 008°27' 00" W

Note 1: In the event of a radio failure:  
- Aircraft from the North and East route via Falcarragh not above 1500 FT to the Annagry Hold  
- Aircraft from the South route via Dawros Head towards Aran Island not above 1500 FT to Owey Hold to receive landing instructions from the Control Tower using the ALDIS Lamp.

SCALE 1:250,000  
Datum: Malin Head



Based on Ordnance Survey Ireland by permission of the Government Permit 7109

CHANGE: GENERAL REVISION AND FREQUENCIES