

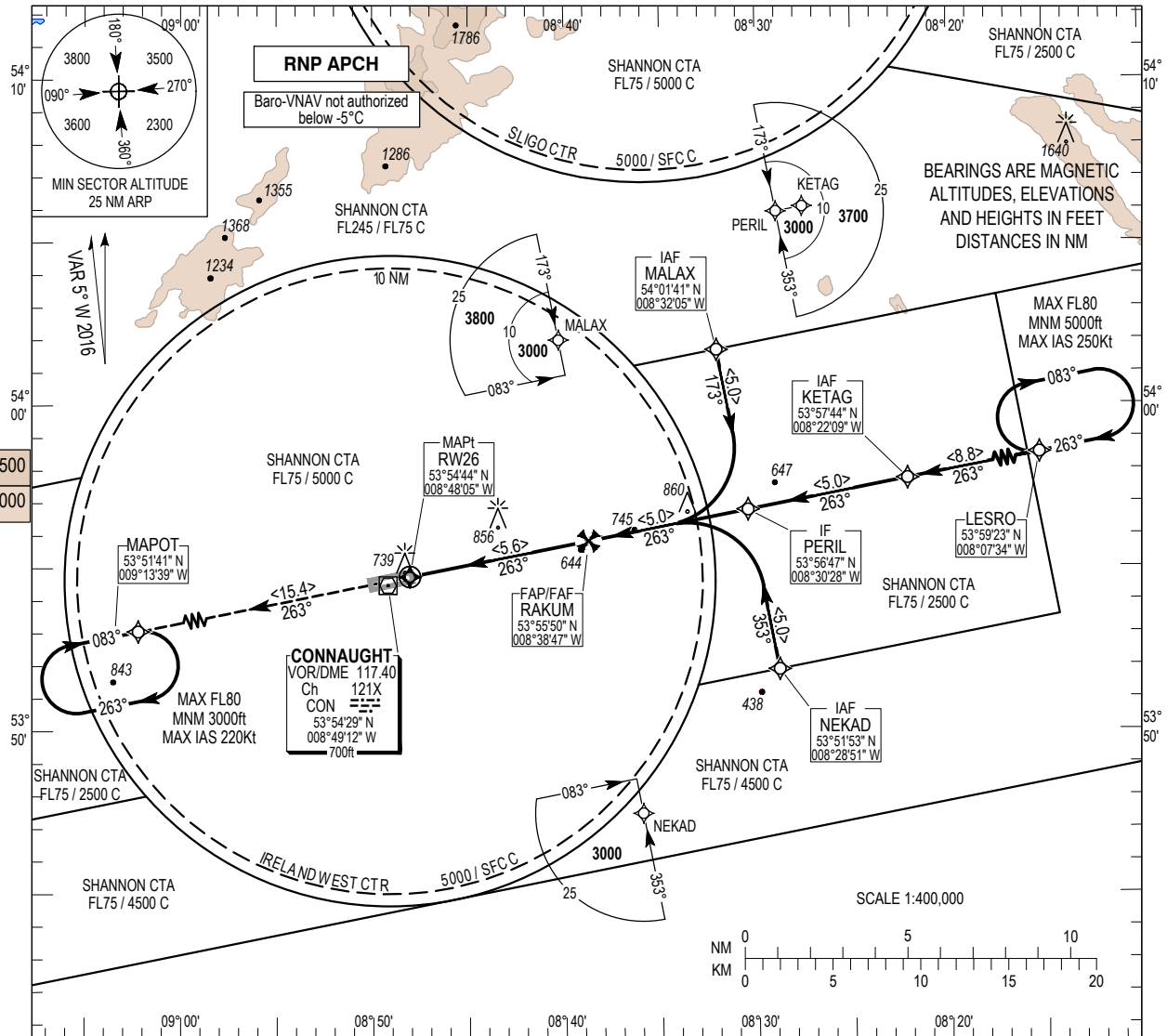
INSTRUMENT APPROACH CHART - ICAO

AERODROME ELEV 665 ft
 HEIGHTS RELATED TO THR RWY 26 - ELEV 665 ft

SBAS CH 73326 E26A
TWR 130.7 GND 130.7, 121.9 Emerg 121.5

CONSULT NOTAM FOR LATEST INFORMATION

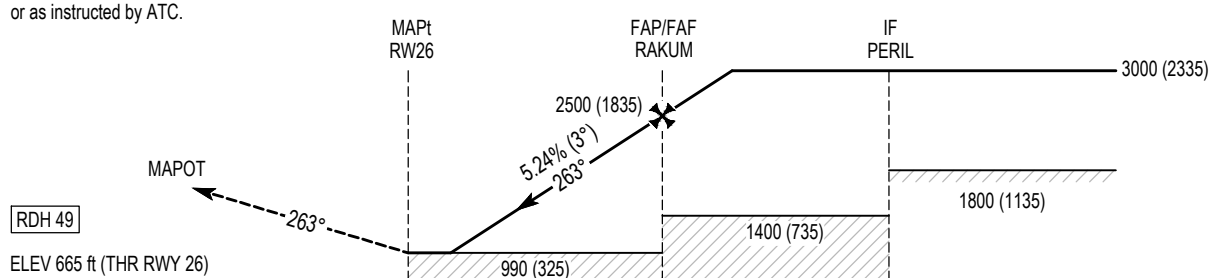
IRELAND WEST/KNOCK RNP RWY 26
 (ACFT CAT A, B, C, D)
 MNM TEMP -5°C
 MAX +30°C



MISSED APPROACH:
 Climb straight ahead to 3000ft to enter the MAPOT hold or as instructed by ATC.

TRANSITION ALTITUDE 5000 ft

Change: Final Approach Bearing.



7 6 5 4 3 2 1 0 1 2 3 4 5 6 7 8 9 10 11 12 13 14 15 16
 NM FROM THR RWY 26

Aircraft Category		A	B	C	D	Recommended Profile on Final Approach					
OCA (OCH)	LPV	880 (215)	885 (220)	890 (225)	900 (235)	THR 26	5.0	4.0	3.0	2.0	1.0
	LNAV/VNAV	920 (255)				ALT (HGT)	2305 (1640)	1990 (1325)	1670 (1005)	1350 (685)	1030 (365)
	LNAV	990 (325)				Descent Rate 5.24%, (3°), 318 ft/NM	kts	80	100	120	140
VISUAL MANOEUVRING (These heights are AAL)	1060 (395)	1160 (495)	1260 (595)	1360 (695)	ft / min		430	530	640	740	850

IRELAND WEST/KNOCK RNP RWY 26

Navigation Performance	Path Terminator	WPT Name	Latitude (N)/ Longitude (W)	Fly-By or Fly-over	Distance (NM)	True Track/ Magnetic Track	Upper limit/ Lower Limit	Speed Limit (kts)	VPA / TCH	Remarks
RNP APCH	IF	MALAX	540141.2 / 0083205.4	Fly-By	-	-	-	-	-	IAF
RNP APCH	TF	PERIL	535647.1 / 0083028.1	Fly-By	5.0	169.0 / 173	-	-	-	IF
RNP APCH	TF	RAKUM	535549.5 / 0083846.5	Fly-By	5.0	259.0 / 263	-	-	-	FAF
RNP APCH	TF	RW26	535444.3 / 0084804.8	Fly-Over	5.6	258.9 / 263	-	-	3.00 / 49	MAPt
RNP APCH	TF	MAPOT	535141.1 / 0091338.9	Fly-By	15.4	258.7 / 263	-	-	-	MAHP

Navigation Performance	Path Terminator	WPT Name	Latitude (N)/ Longitude (W)	Fly-By or Fly-over	Distance (NM)	True Track/ Magnetic Track	Upper limit/ Lower Limit	Speed Limit (kts)	VPA / TCH	Remarks
RNP APCH	IF	KETAG	535744.1 / 0082209.4	Fly-By	-	-	-	-	-	IAF
RNP APCH	TF	PERIL	535647.1 / 0083028.1	Fly-By	5.0	259.1 / 263	-	-	-	IF
RNP APCH	TF	RAKUM	535549.5 / 0083846.5	Fly-By	5.0	259.0 / 263	-	-	-	FAF
RNP APCH	TF	RW26	535444.3 / 0084804.8	Fly-Over	5.6	258.9 / 263	-	-	3.00 / 49	MAPt
RNP APCH	TF	MAPOT	535141.1 / 0091338.9	Fly-By	15.4	258.7 / 263	-	-	-	MAHP

Navigation Performance	Path Terminator	WPT Name	Latitude (N)/ Longitude (W)	Fly-By or Fly-over	Distance (NM)	True Track/ Magnetic Track	Upper limit/ Lower Limit	Speed Limit (kts)	VPA / TCH	Remarks
RNP APCH	IF	NEKAD	535153.0 / 0082851.3	Fly-By	-	-	-	-	-	IAF
RNP APCH	TF	PERIL	535647.1 / 0083028.1	Fly-By	5.0	349.0 / 353	-	-	-	IF
RNP APCH	TF	RAKUM	535549.5 / 0083846.5	Fly-By	5.0	259.0 / 263	-	-	-	FAF
RNP APCH	TF	RW26	535444.3 / 0084804.8	Fly-Over	5.6	258.9 / 263	-	-	3.00 / 49	MAPt
RNP APCH	TF	MAPOT	535141.1 / 0091338.9	Fly-By	15.4	258.7 / 263	-	-	-	MAHP

Hold Identification – EIKN AD 2.24-8.2

Holding Fix	Latitude (N) / Longitude (W)	Inbound True Track (degrees)	Inbound Mag Track (degrees)	Maximum Indicated Airspeed (kts)	Minimum Holding Altitude/ Level (FL/ft)	Maximum Holding Altitude/ Level (FL/ft)	Outbound time (min)	Direction of Turn
LESRO	535922.7 / 0080734.0	259.4	263	250	5000	FL080	1	R
MAPOT	535141.1 / 0091338.9	078.3	083	220	3000	FL080	1	R