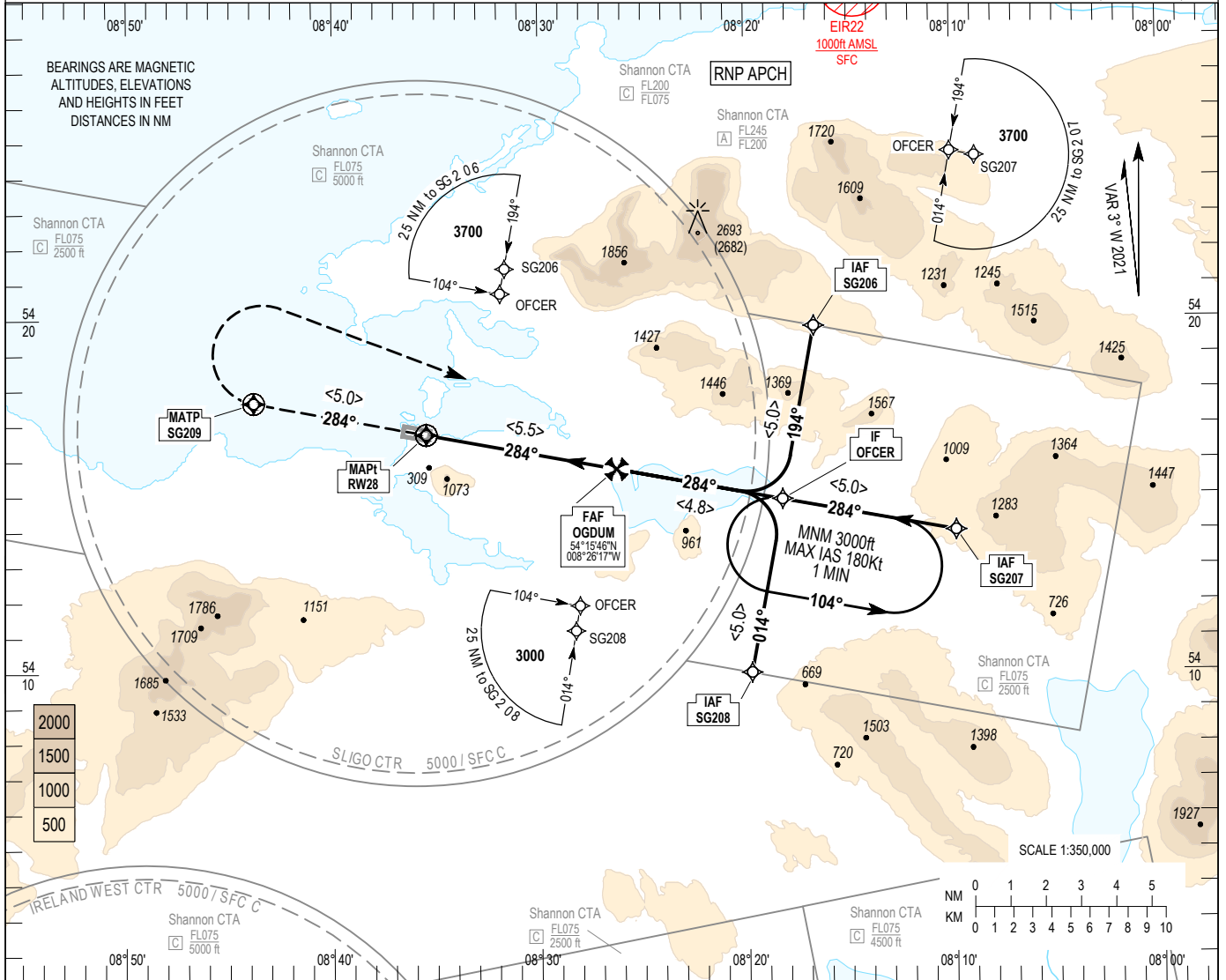


INSTRUMENT APPROACH CHART- ICAO **AERODROME ELEV 15 ft**
 HEIGHTS RELATED TO THR RWY 28 - ELEV 12 ft

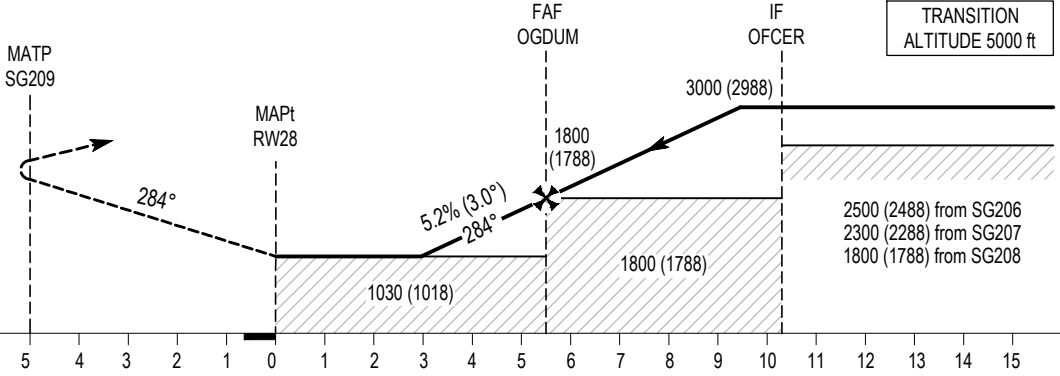
TWR	122.100
GND	122.100
AFIS	122.100

SBAS LPV	CH 87388
E28A	

SLIGO/SLIGO RNP RWY 28 (ACFT CAT A, B)
 MNM TEMP -10°C (BARO VNAV)
 MAX TEMP 40°C (BARO VNAV)



MISSED APPROACH:
 Climb straight ahead.
 At fly-over SG209 turn right to OFCER to hold (MNM 3000ft) or as directed by ATC.



RDH 50

ELEV 12 ft (THR RWY 28)

NM FROM THR RWY 28

OCA (H)	A	B
LNAV	1030 (1018)	
LNAV / VNAV	1010 (998)	
LPV	212 (200)	223 (211)
Visual Manoeuvring (Heights AAL)	1420 (1405)	
	1140 (1125) North of RWY 10/28	1150 (1135) North of RWY 10/28

NOTE:
 1. Instrument approaches only available when Air Traffic Control Zone is active unless authorised by Flight Operations Dept of the Irish Aviation Authority.
 2. Non Precision Approach RWY and Visibility 1000m at Aerodrome.

Recommended Profile on Final Approach						
DIST THR RWY 28 (NM)						
	4			5		
ALT / HT (ft)	1340 (1328)		1650 (1638)			
Ground Speed	kts	80	100	110	120	130
Descent rate gradient - 5.2% (3.0°)	318 ft/NM	ft / min	430	530	580	640
			690			

CHANGE: LPV OCA (H), Note 2, and SBAS FAS Data Block Coding Data.

Sligo RNP RWY 28 via SG206

Nav. Spec.	WPT Name	Latitude (N)/ Longitude (W)	Path Term	Fly-By Fly-over	True track / Mag track	Distance (NM)	Upper limit / Lower limit	Speed Limit (kts)	VPA (°) / TCH (ft)	Remarks
RNP APCH	SG206	541948.1 / 0081642.2	IF	Fly-By	-	-	- / A3700	-	-	-
RNP APCH	OFCER	541454.2 / 0081815.4	TF	Fly-By	190.5 / 194	5.0	- / A3000	-	-	-
RNP APCH	OGDUM	541546.2 / 0082616.5	TF	Fly-By	280.5 / 284	4.8	- / A1800	-	-	R
RNP APCH	RW28	541645.7 / 0083528.2	TF	Fly-Over	280.5 / 284	5.5	-	-	3.00 / 50	-
RNP APCH	SG209	541739.8 / 0084349.6	CF	Fly-Over	280.5 / 284	-	-	-	-	285° SLG / D4.4 SLG
RNP APCH	OFCER	541454.2 / 0081815.4	DF	Fly-By	-	-	- / A3000	-	-	R

Sligo RNP RWY 28 via SG207

Nav. Spec.	WPT Name	Latitude (N)/ Longitude (W)	Path Term	Fly-By Fly-over	True track / Mag track	Distance (NM)	Upper limit / Lower limit	Speed Limit (kts)	VPA (°) / TCH (ft)	Remarks
RNP APCH	SG207	541359.8 / 0080952.6	IF	Fly-By	-	-	- / A3700	-	-	-
RNP APCH	OFCER	541454.2 / 0081815.4	TF	Fly-By	280.5 / 284	5.0	- / A3000	-	-	-
RNP APCH	OGDUM	541546.2 / 0082616.5	TF	Fly-By	280.5 / 284	4.8	- / A1800	-	-	-
RNP APCH	RW28	541645.7 / 0083528.2	TF	Fly-Over	280.5 / 284	5.5	-	-	3.00 / 50	-
RNP APCH	SG209	541739.8 / 0084349.6	CF	Fly-Over	280.5 / 284	-	-	-	-	285° SLG / D4.4 SLG
RNP APCH	OFCER	541454.2 / 0081815.4	DF	Fly-By	-	-	- / A3000	-	-	R

Sligo RNP RWY 28 via SG208

Nav. Spec.	WPT Name	Latitude (N)/ Longitude (W)	Path Term	Fly-By Fly-over	True track / Mag track	Distance (NM)	Upper limit / Lower limit	Speed Limit (kts)	VPA (°) / TCH (ft)	Remarks
RNP APCH	SG208	540958.8 / 0081939.3	IF	Fly-By	-	-	- / A3000	-	-	-
RNP APCH	OFCER	541454.2 / 0081815.4	TF	Fly-By	010.4 / 014	5.0	- / A3000	-	-	-
RNP APCH	OGDUM	541546.2 / 0082616.5	TF	Fly-By	280.5 / 284	4.8	- / A1800	-	-	L
RNP APCH	RW28	541645.7 / 0083528.2	TF	Fly-Over	280.5 / 284	5.5	-	-	3.00 / 50	-
RNP APCH	SG209	541739.8 / 0084349.6	CF	Fly-Over	280.5 / 284	-	-	-	-	285° SLG / D4.4 SLG
RNP APCH	OFCER	541454.2 / 0081815.4	DF	Fly-By	-	-	- / A3000	-	-	R

Hold Identification – OFCER

Holding Fix	Latitude (N) / Longitude (W)	Inbound True Track (degrees)	Inbound Mag Track (degrees)	Maximum Indicated Airspeed (kts)	Minimum Holding Altitude/ Level (FL/ft)	Maximum Holding Altitude/ Level (FL/ft)	Outbound time (min)	Direction of Turn
OFCER	541454.2 / 0081815.4	280.5	284	180	A3000	FL075	1	L

**SBAS FAS Data Block Coding Data
Sligo RNP RWY 28**

Input Data	
Operation Type	0
Service Provider	1 (EGNOS)
Airport Identifier	EISG
Runway	28
Runway Direction	0 (None)
Approach Performance Designator	0
Route Indicator	
Reference Path Data Selector	0
Reference Path Identifier	E28A
LTP / FTP Latitude	541645.6750N
LTP / FTP Longitude	0083528.1840W
LTP / FTP Ellipsoidal Height	61.4 m
FPAP Latitude	541655.5190N
Delta FPAP Latitude	9.8440 seconds
FPAP Longitude	0083700.3455W
Delta FPAP Longitude	-92.1615 seconds
Threshold Crossing Height	50
TCH Units Selector	0 (feet)
Glidepath Angle	3.00
Course Width	105.00
Length Offset	624
HAL	40.0
VAL	35.0
Output Data	
Data Block	10 07 13 09 05 1C 00 00 01 38 32 05 D6 4E 4B 17 90 25 50 FC 66 16 E8 4C 00 FD 2F FD F4 01 2C 01 64 4E C8 AF 65 9A 6E 51
Calculated CRC Value	659A6E51
Required Additional Data	
ICAO Code	EI
LTP/FTP Orthometric Height	3.6
FPAP Orthometric Height (metres)	3.6
SBAS EGNOS Channel	87388