

INSTRUMENT APPROACH CHART- ICAO

AERODROME ELEV 112 ft
HEIGHTS RELATED TO THR RWY 26 - ELEV 112 ft

SBAS CH 69804 E26A

Kerry TWR 123.325
Kerry GND 121.600
Shannon Control 124.700
ATIS 118.025

CONSULT NOTAM FOR LATEST INFORMATION

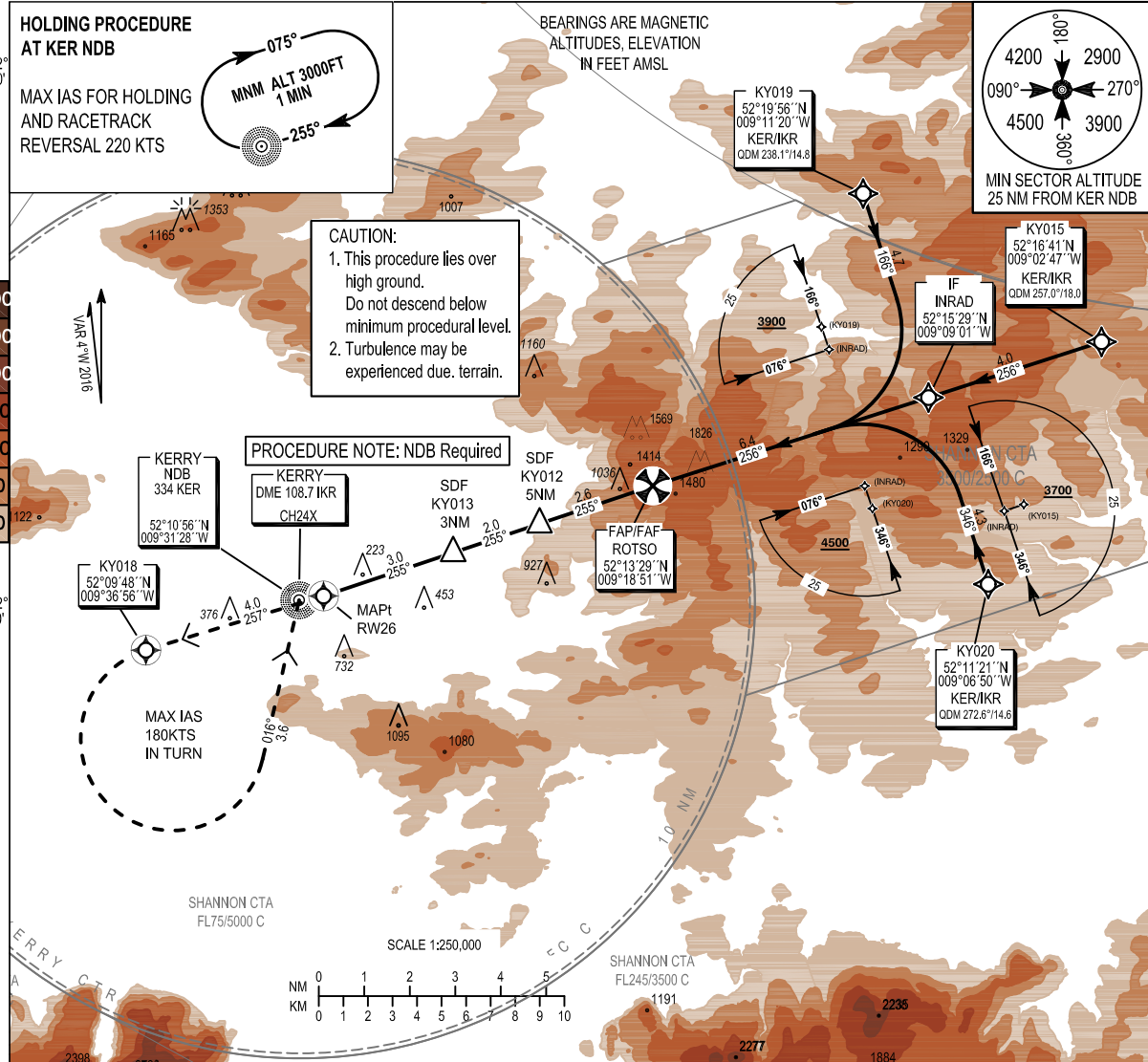
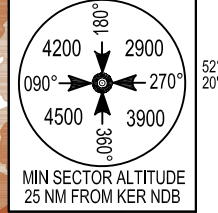
KERRY / KERRY RNP RWY 26 (ACFT CAT A,B,C)
MNM TEMP -10°C (BARO VNAV)
Effective VPA >3.5° TEMP 14° (BARO VNAV)

HOLDING PROCEDURE AT KER NDB
MAX IAS FOR HOLDING AND RACETRACK REVERSAL 220 KTS



CAUTION:
1. This procedure lies over high ground. Do not descend below minimum procedural level.
2. Turbulence may be experienced due terrain.

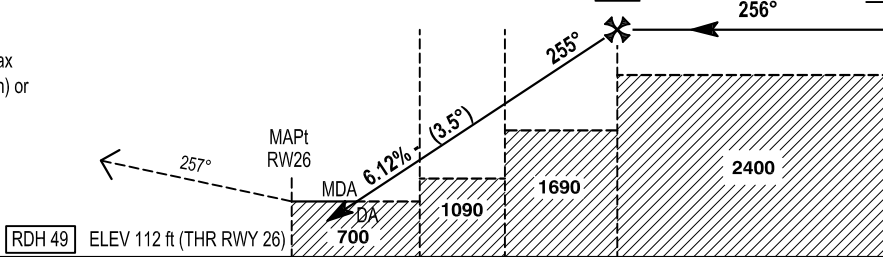
BEARINGS ARE MAGNETIC
ALTITUDES, ELEVATION IN FEET AMSL



Change: Chart Title, LNAV/VNAV & LPV Minima and FAS DATA BLOCK

MISSED APPROACH :
Climb straight ahead to KY018, turning left to enter the KER Hold climbing to 3000ft (Max IAS 180KT in the Turn) or as instructed by ATC.

SDF KY013	SDF KY012	ROTSO FAP/FAF	INRAD IF	TRANSITION ALTITUDE 5000 ft
3NM	5NM	7.6NM	14NM	
1280ft	2020ft	3000ft	3000ft	



NM FROM THR RWY 26																
				NOTE: INSTRUMENT APPROACHES ONLY AVAILABLE WHEN AIR TRAFFIC CONTROL ZONE IS ACTIVE UNLESS AUTHORIZED BY THE OPERATING STANDARDS DEPARTMENT OF THE IAA.												
				Recommended Profile in Final Approach to MAPt (RW26)												
				DIST RW26 (NM)	7.0	6.0	5.0	4.0	3.0	2.0	1.0					
				ALT / HT (ft)	2760/2648	2390/2278	2020/1908	1650/1538	1280/1168	900/788	530/418					
				Ground Speed						kts	70	90	100	110	120	140
				Descent Rate Gradient - 6.12%, (3.5°)						ft / min	430	560	620	680	740	870

Navigation Performance	Path Terminator	WPT Name	Latitude (N) / Longitude (W)	Fly-By or Fly-Over	Distance (NM)	True Track / Magnetic Track	Upper Limit / Lower Limit	Speed Limit (kts)	VPA / TCH	Remarks
RNP APCH	IF	KY019	521955.6 / 0091120.4	Fly-By	-	-	+3900	-	-	IAF
RNP APCH	TF	INRAD	521528.8 / 0090901.3	Fly-By	4.7	162.1 / 166	+3000	-	-	IF
RNP APCH	TF	ROTSO	521329.3 / 0091850.6	Fly-By	6.4	252.1 / 256	@3000	-	-	FAF
RNP APCH	TF	KY012	521237.7 / 0092253.3	Fly-By	2.6	250.9 / 255	+2020	-	-	SDF
RNP APCH	TF	KY013	521159.3 / 0092558.2	Fly-By	2.0	251.4 / 255	+1280	-	-	SDF
RNP APCH	TF	RW26	521101.6 / 0093035.8	Fly-Over	3.0	251.3 / 255	-	-	3.50 / 49	-
RNP APCH	CF	KY018	520948.2 / 0093655.9	Fly-Over	4.0	252.6 / 257	- 3000	180	-	L
RNP APCH	CF	KER NDB	521055.8 / 0093128.2	-	3.6	012.5 / 016	@3000	180	-	-

Navigation Performance	Path Terminator	WPT Name	Latitude (N) / Longitude (W)	Fly-By or Fly-Over	Distance (NM)	True Track / Magnetic Track	Upper Limit / Lower Limit	Speed Limit (kts)	VPA / TCH	Remarks
RNP APCH	IF	KY015	521640.6 / 0090247.1	Fly-By	-	-	+3700	-	-	IAF
RNP APCH	TF	INRAD	521528.8 / 0090901.3	Fly-By	4.0	252.1 / 256	+3000	-	-	IF
RNP APCH	TF	ROTSO	521329.3 / 0091850.6	Fly-By	6.4	252.1 / 256	@3000	-	-	FAF
RNP APCH	TF	KY012	521237.7 / 0092253.3	Fly-By	2.6	250.9 / 255	+2020	-	-	SDF
RNP APCH	TF	KY013	521159.3 / 0092558.2	Fly-By	2.0	251.4 / 255	+1280	-	-	SDF
RNP APCH	TF	RW26	521101.6 / 0093035.8	Fly-Over	3.0	251.3 / 255	-	-	3.50 / 49	-
RNP APCH	CF	KY018	520948.2 / 0093655.9	Fly-Over	4.0	252.6 / 257	- 3000	180	-	L
RNP APCH	CF	KER NDB	521055.8 / 0093128.2	-	3.6	012.5 / 016	@3000	180	-	-

Navigation Performance	Path Terminator	WPT Name	Latitude (N) / Longitude (W)	Fly-By or Fly-Over	Distance (NM)	True Track / Magnetic Track	Upper Limit / Lower Limit	Speed Limit (kts)	VPA / TCH	Remarks
RNP APCH	IF	KY020	521120.9 / 0090649.9	Fly-By	-	-	+4500	-	-	IAF
RNP APCH	TF	INRAD	521528.8 / 0090901.3	Fly-By	4.3	342.2 / 346	+3000	-	-	IF
RNP APCH	TF	ROTSO	521329.3 / 0091850.6	Fly-By	6.4	252.1 / 256	@3000	-	-	FAF
RNP APCH	TF	KY012	521237.7 / 0092253.3	Fly-By	2.6	250.9 / 255	+2020	-	-	SDF
RNP APCH	TF	KY013	521159.3 / 0092558.2	Fly-By	2.0	251.4 / 255	+1280	-	-	SDF
RNP APCH	TF	RW26	521101.6 / 0093035.8	Fly-Over	3.0	251.3 / 255	-	-	3.50 / 49	-
RNP APCH	CF	KY018	520948.2 / 0093655.9	Fly-Over	4.0	252.6 / 257	- 3000	180	-	L
RNP APCH	CF	KER NDB	521055.8 / 0093128.2	-	3.6	012.5 / 016	@3000	180	-	-

Holding Procedure: KER NDB

Holding Fix	Latitude (N) / Longitude (W)	Inbound True Track (degrees)	Inbound Magnetic Track (degrees)	Direction of Turn	Maximum Indicated Airspeed (kts)	Maximum / Minimum Holding Level / Altitude (FL/ft)	Distance outbound (NM)
KER NDB	521055.8 / 0093128.2	250.5	255	R	220	FL100 / 3000	3.7

Runway 26 LNAV/VNAV – Procedure unavailable if OAT is less than -10°C unless avionics include approved temperature compensation. Runway 26 LNAV/VNAV – Note VPA may exceed 3.5° if OAT is higher than 14°C.

SBAS FAS Data Block Coding Data
Kerry RNP RWY 26

Input Data	
Operation Type	0
Service Provider	1
Airport Identifier	EIKY
Runway	26
Runway Direction	0
Approach Performance Designator	0
Route Indicator	
Reference Path Data Selector	0
Reference Path Identifier	E26A
LTP / FTP Latitude	521101.5620N
LTP / FTP Longitude	0093035.7835W
LTP / FTP Ellipsoidal Height	92.8m
FPAP Latitude	521040.1285N
Delta FPAP Latitude	-21.4335 seconds
FPAP Longitude	0093218.4505W
Delta FPAP Longitude	-102.6670 seconds
Threshold Crossing Height	49
TCH Units Selector	0
Glidepath Angle	3.5 °
Course Width	105.0 m
Length Offset	0 m
HAL	40 m
VAL	50 m

Output Data	
Data Block	10 19 0B 09 05 1A 00 00 01 36 32 05 74 14 65 16 F1 34 EB FB A0 17 8D 58 FF EA DD FC EA 01 5E 01 64 00 C8 FA BA CD F1 FB
Calculated CRC Value	BACDF1FB

Required Additional Data (not CRC wrapped)	
ICAO Code	EI
LTP/FTP Orthometric Height	34.10 m
FPAP Orthometric Height (metres)	25.10
SBAS EGNOS Channel	69804