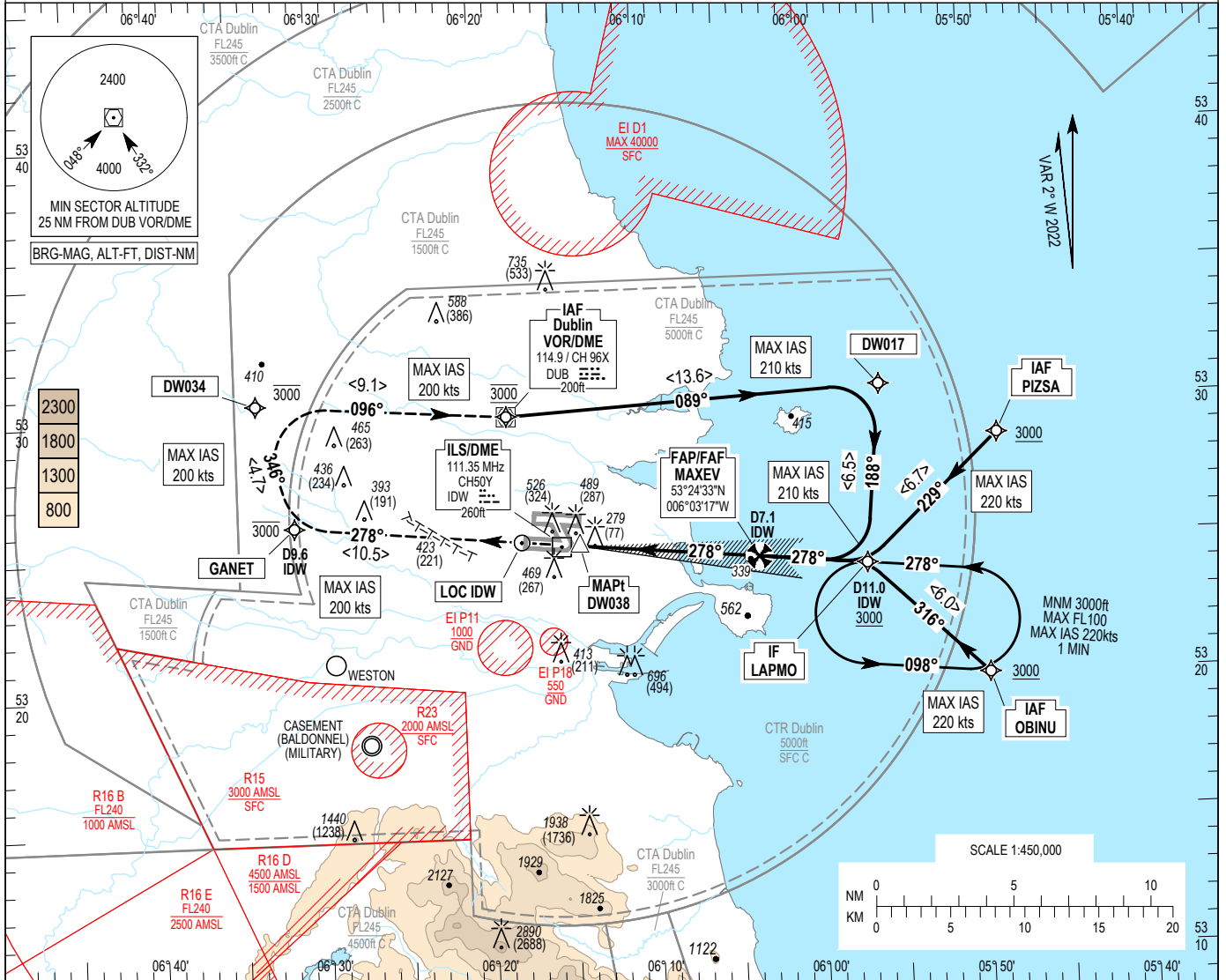


INSTRUMENT  
APPROACH  
CHART- ICAO

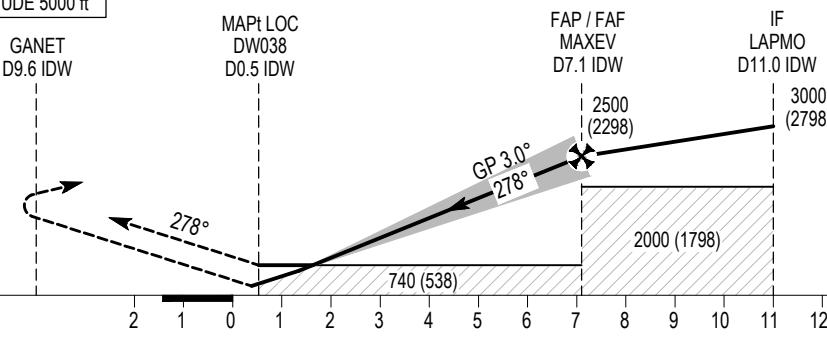
AERODROME ELEV 242 ft  
HEIGHTS RELATED TO  
THR RWY 28L - ELEV 202 ft

ATIS ARR	124.530
APP	121.100
FINALS	119.930
TWR STH	118.600
GND STH	121.800

DUBLIN/DUBLIN  
ILS CAT I and II or LOC RWY 28L  
(ACFT CAT A, B, C, D)



TRANSITION  
ALTITUDE 5000 ft



MISSED APPROACH:  
Climb straight ahead to GANET, at  
or below 3000ft, right turn to  
DW034 and then proceed to DUB  
VOR/DME (MAX IAS 200 kts) to  
initiate another approach or as  
instructed by ATC.

RDH 54

ILS/DME READS ZERO AT RWY 28L THR  
ELEV 202 ft (THR RWY 28L)

NM FROM THR RWY 28L

OCA (H)		A	B	C	D
Straight-in Approach	CAT I	351 (149)	361 (159)	369 (167)	380 (178)
	CAT II	268 (66)	281 (79)	291 (89)	308 (106)
	LOC	670 (468)			
Visual Manoeuvring (Heights AAL)		830 (588)		1100 (858)	

**NOTE:**  
1. RNAV 1 required for initial and missed approach.  
2. Timing not authorized for determining MAPt.  
3. Motorway running almost parallel with RWY 10R/28L, 0.6NM to South of RWY.

Recommended LOC only Profile on Final Approach

DIST THR RWY 28L (NM)	2.0	3.0	4.0	5.0	6.0	7.0		
ALT / HT (ft)	890 (688)	1210 (1008)	1530 (1328)	1850 (1648)	2165 (1963)	2485 (2283)		
Ground Speed	kts		80	100	110	120	140	160
Descent rate gradient - 5.2% (3.0°) 318 ft/NM	ft / min		425	530	585	640	745	850

CHANGE: New procedure, Obstacles updated, MAG VAR, Bearings, OCA (H), Frequencies.

**Dublin ILS RWY 28L via DUB**

Nav. Spec.	WPT Name	Latitude (N)/ Longitude (W)	Path Term.	Fly-By Fly-over	True track / Mag. track	Distance (NM)	Upper limit / Lower limit	Speed Limit (kts)	VPA (°) / TCH (ft)	Remarks
RNAV 1	DUB	532957.8 / 0061825.6	IF	Fly-By	-	-	A3000 / A3000	-	-	-
RNAV 1	DW017	533039.7 / 0055538.6	TF	Fly-By	086.9 / 089	13.6	-	210	-	R
RNAV 1	LAPMO	532411.0 / 0055644.1	TF	Fly-By	185.7 / 188	6.5	- / +A3000	210	-	R

**Dublin ILS RWY 28L via PIZSA**

Nav. Spec.	WPT Name	Latitude (N)/ Longitude (W)	Path Term.	Fly-By Fly-over	True track / Mag. track	Distance (NM)	Upper limit / Lower limit	Speed Limit (kts)	VPA (°) / TCH (ft)	Remarks
RNAV 1	PIZSA	532844.3 / 0054833.6	IF	Fly-By	-	-	- / +A3000	220	-	-
RNAV 1	LAPMO	532411.0 / 0055644.1	TF	Fly-By	227.0 / 229	6.7	- / +A3000	220	-	R

**Dublin ILS RWY 28L via OBINU**

Nav. Spec.	WPT Name	Latitude (N)/ Longitude (W)	Path Term.	Fly-By Fly-over	True track / Mag. track	Distance (NM)	Upper limit / Lower limit	Speed Limit (kts)	VPA (°) / TCH (ft)	Remarks
RNAV 1	OBINU	532001.7 / 0054931.2	IF	Fly-By	-	-	- / +A3000	220	-	-
RNAV 1	LAPMO	532411.0 / 0055644.1	TF	Fly-By	314.0 / 316	6.0	- / +A3000	220	-	L

**Dublin ILS CAT I & II or LOC Approach RWY 28L**

Descent Angle:	3.00°			
Fix	IF LAPMO (D11 IDW)	FAF/FAP MAXEV (D7.1 IDW)	MAPt DW038 (D0.5 IDW)	TP GANET (D9.6 IDW)
Fix Coordinates	532411.0N 0055644.1W	532433.5N 0060317.3W	532510.0N 0061409.2W	532606.5N 0063133.8W
Fix Formation Bearing °T	275.51 IDW	275.43 IDW	275.29 IDW	243.90 DUB
Fix Formation Distances	11.00 IDW	7.06 IDW	0.53 IDW	9.61 IDW

**Dublin ILS RWY 28L MISSED APP**

Nav. Spec.	WPT Name	Latitude (N)/ Longitude (W)	Path Term.	Fly-By Fly-over	True track / Mag. track	Distance (NM)	Upper limit / Lower limit	Speed Limit (kts)	VPA (°) / TCH (ft)	Remarks
RNAV 1	GANET	532606.5 / 0063133.8	IF	Fly-By	-	-	-A3000 / -	200	-	-
RNAV 1	DW034	533037.4 / 0063342.6	TF	Fly-By	344.2 / 346	4.7	-A3000 / -	200	-	R
RNAV 1	DUB	532957.8 / 0061825.6	TF	Fly-By	094.0 / 096	9.1	A3000 / A3000	200	-	R

**Hold Identification – LAPMO**

Holding Fix	Latitude (N) / Longitude (W)	Inbound True Track (degrees)	Inbound Mag Track (degrees)	Maximum Indicated Airspeed (kts)	Minimum Holding Altitude/ Level (FL/ft)	Maximum Holding Altitude/ Level (FL/ft)	Outbound time (min)	Direction of Turn
LAPMO	532411.0 / 0055644.1	275.61	278	220	+A3000	-FL100	1	L