

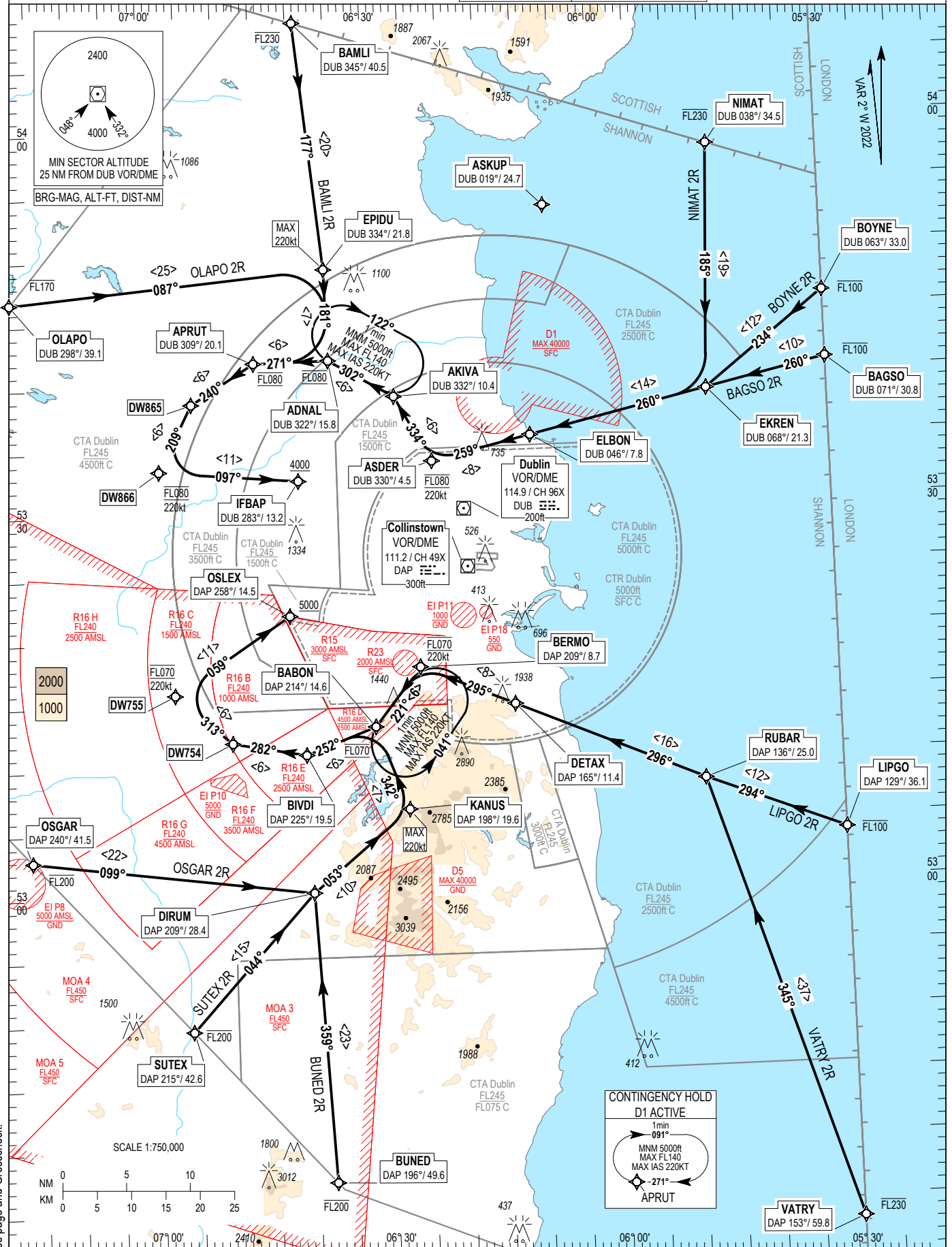
RNAV STANDARD ARRIVAL CHART
INSTRUMENT (STAR) - ICAO

TRANS ALT 5000ft
TRANS LEVEL by ATC

ATIS APP	124.530	ACC Upper North	129.180
	121.100	ACC Upper South	135.655
		ACC Lower North	132.580
		ACC Lower South	120.755

DUBLIN RWY 10 L/R

NIMAT 2R, BOYNE 2R, BAGSO 2R, LIPGO 2R, VATRY 2R,
BUNED 2R, SUTEX 2R, OSGAR 2R, OLAPO 2R, BAMLI 2R



NOTES: 1. ASKUP may be used tactically by ATC to ensure aircraft routings are clear of EI D1. 2. DME/DME or GNSS navigation required.

VERTICAL PLANNING INFORMATION: 1. ACTUAL DESCENT CLEARANCE WILL BE AS DIRECTED BY ATC.

CAUTION: 1. Pilots must inform ATC if unable to comply with any level or speed constraint.

CHANGE: Verso page and Crosscheck.

06 OCT 2022

BAGSO2R STAR RWY 10L/R**BAGS2R**

Nav. Spec.	WPT Name	Latitude (N)/ Longitude (W)	Path Term	Fly-By Fly-over	Distance (NM)	True track / Mag track	Upper limit / Lower limit	Speed Limit (kts)	Remarks
RNAV1	BAGSO	534048.0 / 0053000.0	IF	Fly-by	-	-	-FL100 / -	-	-
RNAV1	EKREN	533843.0 / 0054553.1	TF	Fly-by	9.7	257.7 / 260	-	-	-
RNAV1	ELBON	533534.1 / 0060921.6	TF	Fly-by	14.3	257.4 / 260	-	-	-
RNAV1	ASDER	533346.7 / 0062226.4	TF	Fly-by	8.0	257.1 / 259	FL080 / FL080	220	-
RNAV1	AKIVA	533856.0 / 0062709.6	TF	Fly-by	5.9	331.5 / 334	FL080 / FL080	220	Turn R
RNAV1	ADNAL	534153.9 / 0063541.5	TF	Fly-by	5.9	300.4 / 302	FL080 / FL080	220	Turn L
RNAV1	APRUT	534149.0 / 0064534.9	TF	Fly-by	5.9	269.3 / 271	FL080 / FL080	220	Turn L
RNAV1	DW865	533842.8 / 0065358.4	TF	Fly-by	5.9	238.1 / 240	FL080 / FL080	220	Turn L
RNAV1	DW866	533329.1 / 0065827.2	TF	Fly-by	5.9	207.0 / 209	FL080 / FL080	220	Turn L
RNAV1	IFBAP	533230.8 / 0064006.2	TF	Fly-by	11.0	095.0 / 097	- / +A4000	-	Turn L

BAML12R STAR RWY 10L/R**BAML2R**

Nav. Spec.	WPT Name	Latitude (N)/ Longitude (W)	Path Term	Fly-By Fly-over	Distance (NM)	True track / Mag track	Upper limit / Lower limit	Speed Limit (kts)	Remarks
RNAV1	BAML1	540828.5 / 0063904.0	IF	Fly-by	-	-	-FL230	-	-
RNAV1	EPIDU	534903.5 / 0063554.8	TF	Fly-by	19.5	174.5 / 177	-	220	-
RNAV1	ADNAL	534153.9 / 0063541.5	TF	Fly-by	7.2	178.9 / 181	FL080 / FL080	220	Turn R
RNAV1	APRUT	534149.0 / 0064534.9	TF	Fly-by	5.9	269.3 / 271	FL080 / FL080	220	Turn R
RNAV1	DW865	533842.8 / 0065358.4	TF	Fly-by	5.9	238.1 / 240	FL080 / FL080	220	Turn L
RNAV1	DW866	533329.1 / 0065827.2	TF	Fly-by	5.9	207.0 / 209	FL080 / FL080	220	Turn L
RNAV1	IFBAP	533230.8 / 0064006.2	TF	Fly-by	11.0	095.0 / 097	- / +A4000	-	Turn L

BOYNE2R STAR RWY 10L/R**BOYN2R**

Nav. Spec.	WPT Name	Latitude (N)/ Longitude (W)	Path Term	Fly-By Fly-over	Distance (NM)	True track / Mag track	Upper limit / Lower limit	Speed Limit (kts)	Remarks
RNAV1	BOYNE	534601.6 / 0053000.0	IF	Fly-by	-	-	-FL100 / -	-	-
RNAV1	EKREN	533843.0 / 0054553.1	TF	Fly-by	11.9	232.3 / 234	-	-	-
RNAV1	ELBON	533534.1 / 0060921.6	TF	Fly-by	14.3	257.4 / 260	-	-	Turn R
RNAV1	ASDER	533346.7 / 0062226.4	TF	Fly-by	8.0	257.1 / 259	FL080 / FL080	220	-
RNAV1	AKIVA	533856.0 / 0062709.6	TF	Fly-by	5.9	331.5 / 334	FL080 / FL080	220	Turn R
RNAV1	ADNAL	534153.9 / 0063541.5	TF	Fly-by	5.9	300.4 / 302	FL080 / FL080	220	Turn L
RNAV1	APRUT	534149.0 / 0064534.9	TF	Fly-by	5.9	269.3 / 271	FL080 / FL080	220	Turn L
RNAV1	DW865	533842.8 / 0065358.4	TF	Fly-by	5.9	238.1 / 240	FL080 / FL080	220	Turn L
RNAV1	DW866	533329.1 / 0065827.2	TF	Fly-by	5.9	207.0 / 209	FL080 / FL080	220	Turn L
RNAV1	IFBAP	533230.8 / 0064006.2	TF	Fly-by	11.0	095.0 / 097	- / +A4000	-	Turn L

BUNED2R STAR RWY 10L/R**BUNE2R**

Nav. Spec.	WPT Name	Latitude (N)/ Longitude (W)	Path Term	Fly-By Fly-over	Distance (NM)	True track / Mag track	Upper limit / Lower limit	Speed Limit (kts)	Remarks
RNAV1	BUNED	523721.9 / 0063748.2	IF	Fly-by	-	-	-FL200 / -	-	-
RNAV1	DIRUM	530009.7 / 0063940.0	TF	Fly-by	22.9	357.2 / 359	-	-	-
RNAV1	KANUS	530630.5 / 0062652.1	TF	Fly-by	10.0	050.5 / 053	-	220	Turn R
RNAV1	BABON	531303.3 / 0063056.5	TF	Fly-by	7.0	339.5 / 342	FL070 / FL070	220	Turn L
RNAV1	BIVDI	531059.5 / 0064005.6	TF	Fly-by	5.9	249.5 / 252	FL070 / FL070	220	Turn L
RNAV1	DW754	531202.3 / 0064942.6	TF	Fly-by	5.9	280.3 / 282	FL070 / FL070	220	Turn R
RNAV1	DW755	531554.2 / 0065704.5	TF	Fly-by	5.9	311.2 / 313	FL070 / FL070	220	Turn R
RNAV1	OSLEX	532155.8 / 0064144.5	TF	Fly-by	11.0	056.6 / 059	- / +A5000	-	Turn R

LIPGO2R STAR RWY 10L/R**LIPG2R**

Nav. Spec.	WPT Name	Latitude (N)/ Longitude (W)	Path Term	Fly-By Fly-over	Distance (NM)	True track / Mag track	Upper limit / Lower limit	Speed Limit (kts)	Remarks
RNAV1	LIPGO	530350.1 / 0053000.0	IF	Fly-by	-	-	-FL100 / -	-	-
RNAV1	RUBAR	530808.9 / 0054805.4	TF	Fly-by	11.7	291.7 / 294	-	-	-
RNAV1	DETAX	531430.7 / 0061235.6	TF	Fly-by	16.1	293.5 / 296	-	-	-
RNAV1	BERMO	531738.9 / 0062450.8	TF	Fly-by	8.0	293.2 / 295	FL070 / FL070	220	-
RNAV1	BABON	531303.3 / 0063056.5	TF	Fly-by	5.9	218.6 / 221	FL070 / FL070	220	Turn L
RNAV1	BIVDI	531059.5 / 0064005.6	TF	Fly-by	5.9	249.5 / 252	FL070 / FL070	220	Turn R
RNAV1	DW754	531202.3 / 0064942.6	TF	Fly-by	5.9	280.3 / 282	FL070 / FL070	220	Turn R
RNAV1	DW755	531554.2 / 0065704.5	TF	Fly-by	5.9	311.2 / 313	FL070 / FL070	220	Turn R
RNAV1	OSLEX	532155.8 / 0064144.5	TF	Fly-by	11.0	056.6 / 059	- / +A5000	-	Turn R

NIMAT2R STAR RWY 10L/R**NIMA2R**

Nav. Spec.	WPT Name	Latitude (N)/ Longitude (W)	Path Term	Fly-By Fly-over	Distance (NM)	True track / Mag track	Upper limit / Lower limit	Speed Limit (kts)	Remarks
RNAV1	NIMAT	535754.1 / 0054431.7	IF	Fly-by	-	-	-FL230 / -	-	-
RNAV1	EKREN	533843.0 / 0054553.1	TF	Fly-by	19.2	182.4 / 185	-	-	-
RNAV1	ELBON	533534.1 / 0060921.6	TF	Fly-by	14.3	257.4 / 260	-	-	Turn R
RNAV1	ASDER	533346.7 / 0062226.4	TF	Fly-by	8.0	257.1 / 259	FL080 / FL080	220	-
RNAV1	AKIVA	533856.0 / 0062709.6	TF	Fly-by	5.9	331.5 / 334	FL080 / FL080	220	Turn R
RNAV1	ADNAL	534153.9 / 0063541.5	TF	Fly-by	5.9	300.4 / 302	FL080 / FL080	220	Turn L
RNAV1	APRUT	534149.0 / 0064534.9	TF	Fly-by	5.9	269.3 / 271	FL080 / FL080	220	Turn L
RNAV1	DW865	533842.8 / 0065358.4	TF	Fly-by	5.9	238.1 / 240	FL080 / FL080	220	Turn L
RNAV1	DW866	533329.1 / 0065827.2	TF	Fly-by	5.9	207.0 / 209	FL080 / FL080	220	Turn L
RNAV1	IFBAP	533230.8 / 0064006.2	TF	Fly-by	11.0	095.0 / 097	- / +A4000	-	Turn L

**OLAPO2R STAR RWY 10L/R
OLAP2R**

Nav. Spec.	WPT Name	Latitude (N)/ Longitude (W)	Path Term	Fly-By Fly-over	Distance (NM)	True track / Mag track	Upper limit / Lower limit	Speed Limit (kts)	Remarks
RNAV1	OLAPO	534649.0 / 0071740.6	IF	Fly-by	-	-	-FL170 / -	-	-
RNAV1	EPIDU	534903.5 / 0063554.8	TF	Fly-by	24.9	084.5 / 087	-	220	-
RNAV1	ADNAL	534153.9 / 0063541.5	TF	Fly-by	5.9	178.9 / 181	FL080 / FL080	220	Turn R
RNAV1	APRUT	534149.0 / 0064534.9	TF	Fly-by	5.9	269.3 / 271	FL080 / FL080	220	Turn L
RNAV1	DW865	533842.8 / 0065358.4	TF	Fly-by	5.9	238.1 / 240	FL080 / FL080	220	Turn L
RNAV1	DW866	533329.1 / 0065827.2	TF	Fly-by	5.9	207.0 / 209	FL080 / FL080	220	Turn L
RNAV1	IFBAP	533230.8 / 0064006.2	TF	Fly-by	11.0	095.0 / 097	- / +A4000	-	Turn L

**OSGAR2R STAR RWY 10L/R
OSGA2R**

Nav. Spec.	WPT Name	Latitude (N)/ Longitude (W)	Path Term	Fly-By Fly-over	Distance (NM)	True track / Mag track	Upper limit / Lower limit	Speed Limit (kts)	Remarks
RNAV1	OSGAR	530257.9 / 0071612.8	IF	Fly-by	-	-	-FL200 / -	-	-
RNAV1	DIRUM	530009.7 / 0063940.0	TF	Fly-by	22.2	097.0 / 099	-	-	-
RNAV1	KANUS	530630.5 / 0062652.1	TF	Fly-by	10.0	050.5 / 053	-	220	Turn L
RNAV1	BABON	531303.3 / 0063056.5	TF	Fly-by	7.0	339.5 / 342	FL070 / FL070	220	Turn L
RNAV1	BIVDI	531059.5 / 0064005.6	TF	Fly-by	5.9	249.5 / 252	FL070 / FL070	220	Turn L
RNAV1	DW754	531202.3 / 0064942.6	TF	Fly-by	5.9	280.3 / 282	FL070 / FL070	220	Turn R
RNAV1	DW755	531554.2 / 0065704.5	TF	Fly-by	5.9	311.2 / 313	FL070 / FL070	220	Turn R
RNAV1	OSLEX	532155.8 / 0064144.5	TF	Fly-by	11.0	056.6 / 059	- / +A5000	-	Turn R

**SUTEX2R STAR RWY 10L/R
SUTE2R**

Nav. Spec.	WPT Name	Latitude (N)/ Longitude (W)	Path Term	Fly-By Fly-over	Distance (NM)	True track / Mag track	Upper limit / Lower limit	Speed Limit (kts)	Remarks
RNAV1	SUTEX	524927.7 / 0065549.3	IF	Fly-by	-	-	-FL200 / -	-	-
RNAV1	DIRUM	530009.7 / 0063940.0	TF	Fly-by	14.5	042.3 / 044	-	-	-
RNAV1	KANUS	530630.5 / 0062652.1	TF	Fly-by	10.0	050.5 / 053	-	220	Turn R
RNAV1	BABON	531303.3 / 0063056.5	TF	Fly-by	7.0	339.5 / 342	FL070 / FL070	220	Turn L
RNAV1	BIVDI	531059.5 / 0064005.6	TF	Fly-by	5.9	249.5 / 252	FL070 / FL070	220	Turn L
RNAV1	DW754	531202.3 / 0064942.6	TF	Fly-by	5.9	280.3 / 282	FL070 / FL070	220	Turn R
RNAV1	DW755	531554.2 / 0065704.5	TF	Fly-by	5.9	311.2 / 313	FL070 / FL070	220	Turn R
RNAV1	OSLEX	532155.8 / 0064144.5	TF	Fly-by	11.0	056.6 / 059	- / +A5000	-	Turn R

**VATRY2R STAR RWY 10L/R
VATR2R**

Nav. Spec.	WPT Name	Latitude (N)/ Longitude (W)	Path Term	Fly-By Fly-over	Distance (NM)	True track / Mag track	Upper limit / Lower limit	Speed Limit (kts)	Remarks
RNAV1	VATRY	523316.0 / 0053000.0	IF	Fly-by	-	-	-FL230 / -	-	-
RNAV1	RUBAR	530808.9 / 0054805.4	TF	Fly-by	36.6	342.7 / 345	-	-	-
RNAV1	DETX	531430.7 / 0061235.6	TF	Fly-by	16.1	293.5 / 296	-	-	Turn L
RNAV1	BERMO	531738.9 / 0062450.8	TF	Fly-by	8.0	293.2 / 295	FL070 / FL070	220	-
RNAV1	BABON	531303.3 / 0063056.5	TF	Fly-by	5.9	218.6 / 221	FL070 / FL070	220	Turn L
RNAV1	BIVDI	531059.5 / 0064005.6	TF	Fly-by	5.9	249.5 / 252	FL070 / FL070	220	Turn R
RNAV1	DW754	531202.3 / 0064942.6	TF	Fly-by	5.9	280.3 / 282	FL070 / FL070	220	Turn R
RNAV1	DW755	531554.2 / 0065704.5	TF	Fly-by	5.9	311.2 / 313	FL070 / FL070	220	Turn R
RNAV1	OSLEX	532155.8 / 0064144.5	TF	Fly-by	11.0	056.6 / 059	- / +A5000	-	Turn R

Hold Identification – EIDW AD 2.24-23.1

Holding Fix	Latitude (N) / Longitude (W)	Inbound True Track (degrees)	Inbound Mag Track (degrees)	Maximum Indicated Airspeed (kts)	Maximum / Minimum Holding Altitude/Level (FL/ft)	Limiting outbound time (min)	Direction of Turn
ADNAL	534153.9 / 0063541.5	300.5	302	220	FL140 / A5000	1	R
BABON	531303.3 / 0063056.5	218.7	221	220	FL140 / A5000	1	L
APRUT	534149.0 / 0064534.9	269.3	271	220	FL140 / A5000	1	R