

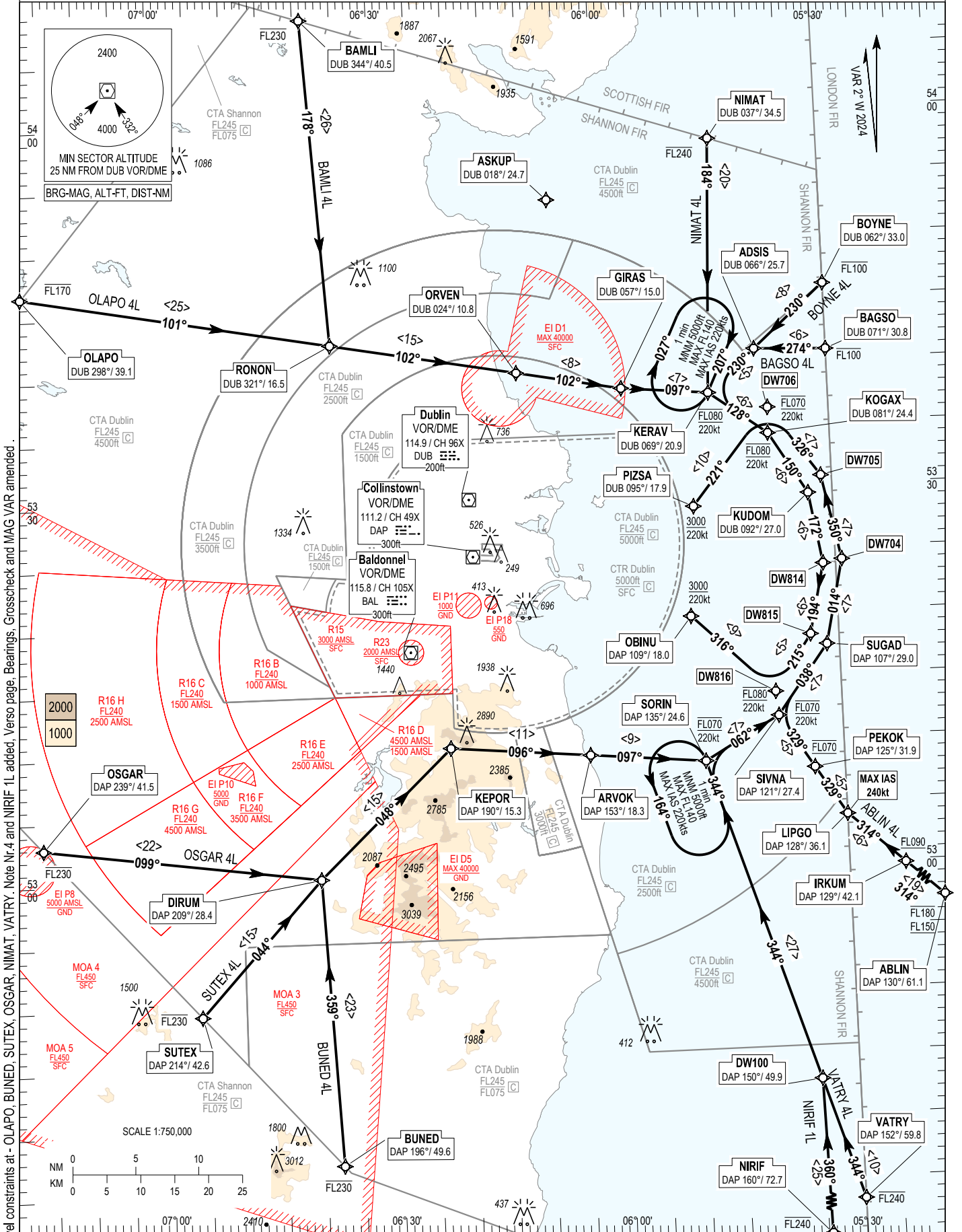
RNAV STANDARD ARRIVAL CHART INSTRUMENT (STAR) - ICAO

TRANS ALT 5000ft TRANS LEVEL by ATC

ATIS APP	124.530	ACC Upper North	129.180
	121.100	ACC Upper South	135.655
		ACC Lower North	132.580
		ACC Lower South	120.755

DUBLIN RWY 28 L/R

NIMAT 4L, BOYNE 4L, BAGSO 4L, ABLIN 4L, VATRY 4L, BUNED 4L, SUTEX 4L, OSGAR 4L, OLAPO 4L, BAMLI 4L, NIRIF 1L



CHANGE: Level constraints at - OLAPO, BUNED, SUTEX, OSGAR, NIMAT, VATRY, Note Nr.4 and NIRIF 1L added, Verso page, Bearings, Crosscheck and MAG VAR amended.

NOTES: 1. ASKUP may be used tactically by ATC to ensure aircraft routings are clear of EI D1. 2. DME/DME or GNSS navigation required. 3. Aircraft routing via ASKUP that experience radio communication failure should follow the appropriate procedure for the arrival runway remaining clear of EI D1. 4. Aircraft flying the ABLIN(L) STAR losing R/T contact should squawk A7600 and should continue to fly the STAR (including the sequence leg from SIVNA onwards) and complete the approach.

VERTICAL PLANNING INFORMATION: 1. ACTUAL DESCENT CLEARANCE WILL BE AS DIRECTED BY ATC. **CAUTION:** 1. Pilots must inform ATC if unable to comply with any level or speed constraint.

16 MAY 2024

ABLIN 4L STAR RWY 28L/R

ABL14L

Nav. Spec.	WPT Name	Latitude (N) / Longitude (W)	Path Term	Fly-By Fly-Over	True track / Mag track (°)	Distance (NM)	Upper limit / Lower limit (ft)	Speed limit (kts)	Remarks
RNAV 1	ABLIN	524658.0 / 0045933.0	IF	-	-	-	-FL180 / +FL150	-	-
RNAV 1	IRKUM	525948.0 / 0052239.0	TF	Fly-By	312.7 / 314	19.0	- / +FL090	-	-
RNAV 1	LIPGO	530350.0 / 0053000.0	TF	Fly-By	312.4 / 314	6.0	-	240	-
RNAV 1	PEKOK	530739.3 / 0053400.8	TF	Fly-By	327.7 / 329	4.5	FL070 / FL070	-	Turn R
RNAV 1	SIVNA	531152.3 / 0053827.7	TF	Fly-By	327.7 / 329	5.0	FL070 / FL070	220	-
RNAV 1	SUGAD	531722.5 / 0053139.8	TF	Fly-By	036.5 / 038	6.9	FL070 / FL070	220	Turn R
RNAV 1	DW704	532403.7 / 0052910.1	TF	Fly-By	012.6 / 014	6.9	FL070 / FL070	220	Turn L
RNAV 1	DW705	533046.6 / 0053126.4	TF	Fly-By	348.6 / 350	6.9	FL070 / FL070	220	Turn L
RNAV 1	DW706	533621.3 / 0053806.9	TF	Fly-By	324.6 / 326	6.9	FL070 / FL070	220	Turn L
RNAV 1	PIZSA	532844.3 / 0054833.6	TF	Fly-By	219.3 / 221	9.9	- / +A3000	220	Turn L

BAGSO 4L STAR RWY 28L/R

BAGS4L

Nav. Spec.	WPT Name	Latitude (N) / Longitude (W)	Path Term	Fly-By Fly-Over	True track / Mag track (°)	Distance (NM)	Upper limit / Lower limit (ft)	Speed limit (kts)	Remarks
RNAV 1	BAGSO	534048.0 / 0053000.0	IF	-	-	-	-FL100 / -	-	-
RNAV 1	ADSI	534103.1 / 0053934.0	TF	Fly-By	272.6 / 274	5.7	-	-	-
RNAV 1	KERAV	533742.7 / 0054557.3	TF	Fly-By	228.7 / 230	5.1	FL080 / FL080	220	Turn L
RNAV 1	KOGAX	533418.6 / 0053814.1	TF	Fly-By	126.5 / 128	5.7	FL080 / FL080	220	Turn L
RNAV 1	KUDOM	532925.8 / 0053314.3	TF	Fly-By	148.6 / 150	5.7	FL080 / FL080	220	Turn R
RNAV 1	DW814	532347.5 / 0053141.1	TF	Fly-By	170.6 / 172	5.7	FL080 / FL080	220	Turn R
RNAV 1	DW815	531812.9 / 0053346.6	TF	Fly-By	192.7 / 194	5.7	FL080 / FL080	220	Turn R
RNAV 1	DW816	531346.9 / 0053844.4	TF	Fly-By	213.9 / 215	5.3	FL080 / FL080	220	Turn R
RNAV 1	OBINU	532001.7 / 0054931.2	TF	Fly-By	314.1 / 316	9.0	- / +A3000	220	Turn R

BAMLI 4L STAR RWY 28L/R

BAML4L

Nav. Spec.	WPT Name	Latitude (N) / Longitude (W)	Path Term	Fly-By Fly-Over	True track / Mag track (°)	Distance (NM)	Upper limit / Lower limit (ft)	Speed limit (kts)	Remarks
RNAV 1	BAMLI	540828.5 / 0063904.0	IF	-	-	-	-FL230 / -	-	-
RNAV 1	RONON	534233.9 / 0063619.2	TF	Fly-By	176.4 / 178	26.0	-	-	-
RNAV 1	ORVEN	533953.5 / 0061129.8	TF	Fly-By	100.1 / 102	15.0	-	-	Turn L
RNAV 1	GIRAS	533821.0 / 0055733.2	TF	Fly-By	100.4 / 102	8.4	-	-	-
RNAV 1	KERAV	533742.7 / 0054557.3	TF	Fly-By	095.2 / 097	6.9	FL080 / FL080	220	Turn L
RNAV 1	KOGAX	533418.6 / 0053814.1	TF	Fly-By	126.5 / 128	5.7	FL080 / FL080	220	Turn R
RNAV 1	KUDOM	532925.8 / 0053314.3	TF	Fly-By	148.6 / 150	5.7	FL080 / FL080	220	Turn R
RNAV 1	DW814	532347.5 / 0053141.1	TF	Fly-By	170.6 / 172	5.7	FL080 / FL080	220	Turn R
RNAV 1	DW815	531812.9 / 0053346.6	TF	Fly-By	192.7 / 194	5.7	FL080 / FL080	220	Turn R
RNAV 1	DW816	531346.9 / 0053844.4	TF	Fly-By	213.9 / 215	5.3	FL080 / FL080	220	Turn R
RNAV 1	DW015	532001.7 / 0054931.2	TF	Fly-By	314.1 / 316	9.0	- / +A3000	220	Turn R

BOYNE 4L STAR RWY 28L/R

BOYN4L

Nav. Spec.	WPT Name	Latitude (N) / Longitude (W)	Path Term	Fly-By Fly-Over	True track / Mag track (°)	Distance (NM)	Upper limit / Lower limit (ft)	Speed limit (kts)	Remarks
RNAV 1	BOYNE	534601.6 / 0053000.0	IF	-	-	-	-FL100 / -	-	-
RNAV 1	ADSI	534103.1 / 0053934.0	TF	Fly-By	228.8 / 230	7.6	-	-	-
RNAV 1	KERAV	533742.7 / 0054557.3	TF	Fly-By	228.7 / 230	5.1	FL080 / FL080	220	-
RNAV 1	KOGAX	533418.6 / 0053814.1	TF	Fly-By	126.5 / 128	5.7	FL080 / FL080	220	Turn L
RNAV 1	KUDOM	532925.8 / 0053314.3	TF	Fly-By	148.6 / 150	5.7	FL080 / FL080	220	Turn R
RNAV 1	DW814	532347.5 / 0053141.1	TF	Fly-By	170.6 / 172	5.7	FL080 / FL080	220	Turn R
RNAV 1	DW815	531812.9 / 0053346.6	TF	Fly-By	192.7 / 194	5.7	FL080 / FL080	220	Turn R
RNAV 1	DW816	531346.9 / 0053844.4	TF	Fly-By	213.9 / 215	5.3	FL080 / FL080	220	Turn R
RNAV 1	OBINU	532001.7 / 0054931.2	TF	Fly-By	314.1 / 316	9.0	- / +A3000	220	Turn R

BUNED 4L STAR RWY 28L/R

BUNE4L

Nav. Spec.	WPT Name	Latitude (N) / Longitude (W)	Path Term	Fly-By Fly-Over	True track / Mag track (°)	Distance (NM)	Upper limit / Lower limit (ft)	Speed limit (kts)	Remarks
RNAV 1	BUNED	523721.9 / 0063748.2	IF	-	-	-	-FL230 / -	-	-
RNAV 1	DIRUM	530009.7 / 0063940.0	TF	Fly-By	357.2 / 359	22.9	-	-	-
RNAV 1	KEPOR	531016.5 / 0062200.7	TF	Fly-By	046.3 / 048	14.7	-	-	Turn R
RNAV 1	ARVOK	530919.0 / 0060335.1	TF	Fly-By	094.8 / 096	11.1	-	-	Turn R
RNAV 1	SORIN	530829.3 / 0054822.5	TF	Fly-By	095.1 / 097	9.2	FL070 / FL070	220	-
RNAV 1	SIVNA	531152.3 / 0053827.7	TF	Fly-By	060.3 / 062	6.9	FL070 / FL070	220	Turn L
RNAV 1	SUGAD	531722.5 / 0053139.8	TF	Fly-By	036.5 / 038	6.9	FL070 / FL070	220	Turn L
RNAV 1	DW704	532403.7 / 0052910.1	TF	Fly-By	012.6 / 014	6.9	FL070 / FL070	220	Turn L
RNAV 1	DW705	533046.6 / 0053126.4	TF	Fly-By	348.6 / 350	6.9	FL070 / FL070	220	Turn L
RNAV 1	DW706	533621.3 / 0053806.9	TF	Fly-By	324.6 / 326	6.9	FL070 / FL070	220	Turn L
RNAV 1	PIZSA	532844.3 / 0054833.6	TF	Fly-By	219.3 / 221	9.9	- / +A3000	220	Turn L

NIMAT 4L STAR RWY 28L/R

NIMA4L

Nav. Spec.	WPT Name	Latitude (N) / Longitude (W)	Path Term	Fly-By Fly-Over	True track / Mag track (°)	Distance (NM)	Upper limit / Lower limit (ft)	Speed limit (kts)	Remarks
RNAV 1	NIMAT	535754.1 / 0054431.7	IF	-	-	-	-FL240 / -	-	-
RNAV 1	KERAV	533742.7 / 0054557.3	TF	Fly-By	182.4 / 184	20.2	FL080 / FL080	220	-
RNAV 1	KOGAX	533418.6 / 0053814.1	TF	Fly-By	126.5 / 128	5.7	FL080 / FL080	220	Turn L
RNAV 1	KUDOM	532925.8 / 0053314.3	TF	Fly-By	148.6 / 150	5.7	FL080 / FL080	220	Turn R
RNAV 1	DW814	532347.5 / 0053141.1	TF	Fly-By	170.6 / 172	5.7	FL080 / FL080	220	Turn R
RNAV 1	DW815	531812.9 / 0053346.6	TF	Fly-By	192.7 / 194	5.7	FL080 / FL080	220	Turn R
RNAV 1	DW816	531346.9 / 0053844.4	TF	Fly-By	213.9 / 215	5.3	FL080 / FL080	220	Turn R
RNAV 1	OBINU	532001.7 / 0054931.2	TF	Fly-By	314.1 / 316	9.0	- / +A3000	220	Turn R

16 MAY 2024

NIRIF 1L STAR RWY 28L/R

NIRIIL

Nav. Spec.	WPT Name	Latitude (N) / Longitude (W)	Path Term	Fly-By Fly-Over	True track / Mag track (°)	Distance (NM)	Upper limit / Lower limit (ft)	Speed limit (kts)	Remarks
RNAV 1	NIRIF	521755.9 / 0053404.3	IF	-	-	-	-FL240 / -	-	-
RNAV 1	DW100	524253.8 / 0053456.8	TF	Fly-By	358.8 / 000	25.0	-	-	-
RNAV 1	SORIN	530829.3 / 0054822.5	TF	Fly-By	342.5 / 344	26.9	FL070 / FL070	220	Turn L
RNAV 1	SIVNA	531152.3 / 0053827.7	TF	Fly-By	060.3 / 062	6.9	FL070 / FL070	220	Turn R
RNAV 1	SUGAD	531722.5 / 0053139.8	TF	Fly-By	036.5 / 038	6.9	FL070 / FL070	220	Turn L
RNAV 1	DW704	532403.7 / 0052910.1	TF	Fly-By	012.6 / 014	6.9	FL070 / FL070	220	Turn L
RNAV 1	DW705	533046.6 / 0053126.4	TF	Fly-By	348.6 / 350	6.9	FL070 / FL070	220	Turn L
RNAV 1	DW706	533621.3 / 0053806.9	TF	Fly-By	324.6 / 326	6.9	FL070 / FL070	220	Turn L
RNAV 1	PIZSA	532844.3 / 0054833.6	TF	Fly-By	219.3 / 221	9.9	- / +A3000	220	Turn L

OLAPO 4L STAR RWY 28L/R

OLAP4L

Nav. Spec.	WPT Name	Latitude (N) / Longitude (W)	Path Term	Fly-By Fly-Over	True track / Mag track (°)	Distance (NM)	Upper limit / Lower limit (ft)	Speed limit (kts)	Remarks
RNAV 1	OLAPO	534649.0 / 0071741.0	IF	-	-	-	-FL170 / -	-	-
RNAV 1	RONON	534233.9 / 0063940.0	TF	Fly-By	099.6 / 101	24.9	-	-	-
RNAV 1	ORVEN	533953.6 / 0061129.8	TF	Fly-By	100.1 / 102	15.0	-	-	-
RNAV 1	GIRAS	533821.0 / 0055733.2	TF	Fly-By	100.4 / 102	8.4	-	-	-
RNAV 1	KERAV	533742.7 / 0054557.3	TF	Fly-By	095.2 / 097	6.9	FL080 / FL080	220	Turn L
RNAV 1	KOGAX	533418.6 / 0053814.1	TF	Fly-By	126.5 / 128	5.7	FL080 / FL080	220	Turn R
RNAV 1	KUDOM	532925.8 / 0053314.3	TF	Fly-By	148.6 / 150	5.7	FL080 / FL080	220	Turn R
RNAV 1	DW814	532347.5 / 0053141.1	TF	Fly-By	170.6 / 172	5.7	FL080 / FL080	220	Turn R
RNAV 1	DW815	531812.9 / 0053346.6	TF	Fly-By	192.7 / 194	5.7	FL080 / FL080	220	Turn R
RNAV 1	DW816	531346.9 / 0053844.4	TF	Fly-By	213.9 / 215	5.3	FL080 / FL080	220	Turn R
RNAV 1	OBINU	532001.7 / 0054931.2	TF	Fly-By	314.1 / 316	9.0	- / +A3000	220	Turn R

OSGAR 4L STAR RWY 28L/R

OSGA4L

Nav. Spec.	WPT Name	Latitude (N) / Longitude (W)	Path Term	Fly-By Fly-Over	True track / Mag track (°)	Distance (NM)	Upper limit / Lower limit (ft)	Speed limit (kts)	Remarks
RNAV 1	OSGAR	530257.9 / 0071612.8	IF	-	-	-	-FL230 / -	-	-
RNAV 1	DIRUM	530009.7 / 0063940.0	TF	Fly-By	097.0 / 099	22.2	-	-	-
RNAV 1	KEPOR	531016.5 / 0062200.7	TF	Fly-By	046.3 / 048	14.7	-	-	Turn L
RNAV 1	ARVOK	530919.0 / 0060335.1	TF	Fly-By	094.8 / 096	11.1	-	-	Turn R
RNAV 1	SORIN	530829.3 / 0054822.5	TF	Fly-By	095.1 / 097	9.2	FL070 / FL070	220	-
RNAV 1	SIVNA	531152.3 / 0053827.7	TF	Fly-By	060.3 / 062	6.9	FL070 / FL070	220	Turn L
RNAV 1	SUGAD	531722.5 / 0053139.8	TF	Fly-By	036.5 / 038	6.9	FL070 / FL070	220	Turn L
RNAV 1	DW704	532403.7 / 0052910.1	TF	Fly-By	012.6 / 014	6.9	FL070 / FL070	220	Turn L
RNAV 1	DW705	533046.6 / 0053126.4	TF	Fly-By	348.6 / 350	6.9	FL070 / FL070	220	Turn L
RNAV 1	DW706	533621.3 / 0053806.9	TF	Fly-By	324.6 / 326	6.9	FL070 / FL070	220	Turn L
RNAV 1	PIZSA	532844.3 / 0054833.6	TF	Fly-By	219.3 / 221	9.9	- / +A3000	220	Turn L

SUTEX 4L STAR RWY 28L/R

SUTE4L

Nav. Spec.	WPT Name	Latitude (N) / Longitude (W)	Path Term	Fly-By Fly-Over	True track / Mag track (°)	Distance (NM)	Upper limit / Lower limit (ft)	Speed limit (kts)	Remarks
RNAV 1	SUTEX	524927.7 / 0065549.3	IF	-	-	-	-FL230 / -	-	-
RNAV 1	DIRUM	530009.7 / 0063940.0	TF	Fly-By	042.3 / 044	14.5	-	-	-
RNAV 1	KEPOR	531016.5 / 0062200.7	TF	Fly-By	046.3 / 048	14.7	-	-	Turn R
RNAV 1	ARVOK	530919.0 / 0060335.1	TF	Fly-By	094.8 / 096	11.1	-	-	Turn R
RNAV 1	SORIN	530829.3 / 0054822.5	TF	Fly-By	095.1 / 097	9.2	FL070 / FL070	220	-
RNAV 1	SIVNA	531152.3 / 0053827.7	TF	Fly-By	060.3 / 062	6.9	FL070 / FL070	220	Turn L
RNAV 1	SUGAD	531722.5 / 0053139.8	TF	Fly-By	036.5 / 038	6.9	FL070 / FL070	220	Turn L
RNAV 1	DW704	532403.7 / 0052910.1	TF	Fly-By	012.6 / 014	6.9	FL070 / FL070	220	Turn L
RNAV 1	DW705	533046.6 / 0053126.4	TF	Fly-By	348.6 / 350	6.9	FL070 / FL070	220	Turn L
RNAV 1	DW706	533621.3 / 0053806.9	TF	Fly-By	324.6 / 326	6.9	FL070 / FL070	220	Turn L
RNAV 1	PIZSA	532844.3 / 0054833.6	TF	Fly-By	219.3 / 221	9.9	- / +A3000	220	Turn L

VATRY 4L STAR RWY 28L/R

VATR4L

Nav. Spec.	WPT Name	Latitude (N) / Longitude (W)	Path Term	Fly-By Fly-Over	True track / Mag track (°)	Distance (NM)	Upper limit / Lower limit (ft)	Speed limit (kts)	Remarks
RNAV 1	VATRY	523316.0 / 0053000.0	IF	-	-	-	-FL240 / -	-	-
RNAV 1	DW100	524253.8 / 0053456.8	TF	Fly-By	342.7 / 344	10.1	-	-	-
RNAV 1	SORIN	530829.3 / 0054822.5	TF	Fly-By	342.5 / 344	26.9	FL070 / FL070	220	Turn R
RNAV 1	SIVNA	531152.3 / 0053827.7	TF	Fly-By	060.3 / 062	6.9	FL070 / FL070	220	Turn L
RNAV 1	SUGAD	531722.5 / 0053139.8	TF	Fly-By	036.5 / 038	6.9	FL070 / FL070	220	Turn L
RNAV 1	DW704	532403.7 / 0052910.1	TF	Fly-By	012.6 / 014	6.9	FL070 / FL070	220	Turn L
RNAV 1	DW705	533046.6 / 0053126.4	TF	Fly-By	348.6 / 350	6.9	FL070 / FL070	220	Turn L
RNAV 1	DW706	533621.3 / 0053806.9	TF	Fly-By	324.6 / 326	6.9	FL070 / FL070	220	Turn L
RNAV 1	PIZSA	532844.3 / 0054833.6	TF	Fly-By	219.3 / 221	9.9	- / +A3000	220	Turn L

Hold Identification – EIDW AD 2.24-22.1

Holding Fix	Latitude (N) / Longitude (W)	Inbound True Track (°)	Inbound Mag Track (°)	Maximum Indicated Airspeed (kts)	Minimum Holding Altitude (ft)	Maximum Holding Level (FL)	Outbound time (min)	Direction of Turn
KERAV	533742.7 / 0054557.3	205.5	207	220	+A5000	-FL140	1	R
SORIN	530829.3 / 0054822.5	342.4	344	220	+A5000	-FL140	1	L