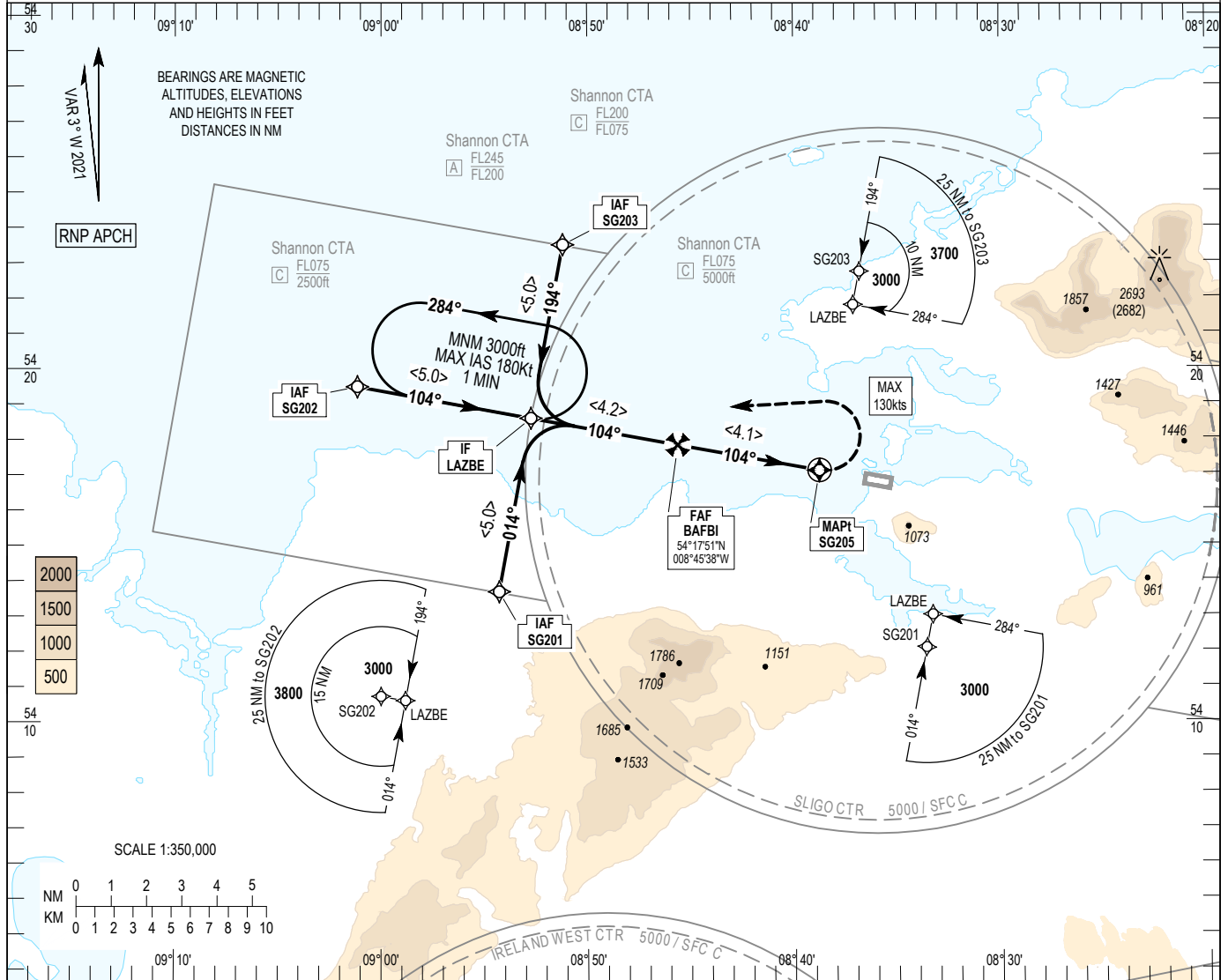


INSTRUMENT
APPROACH
CHART- ICAO

AERODROME ELEV 15 ft
HEIGHTS RELATED TO
THR RWY 10 - ELEV 11 ft

TWR	122.100
GND	122.100
AFIS	122.100

SLIGO / SLIGO
RNP Z RWY 10
(ACFT CAT A,B)
MNM TEMP -10°C (BARO VNAV)
MAX TEMP 40°C (BARO VNAV)

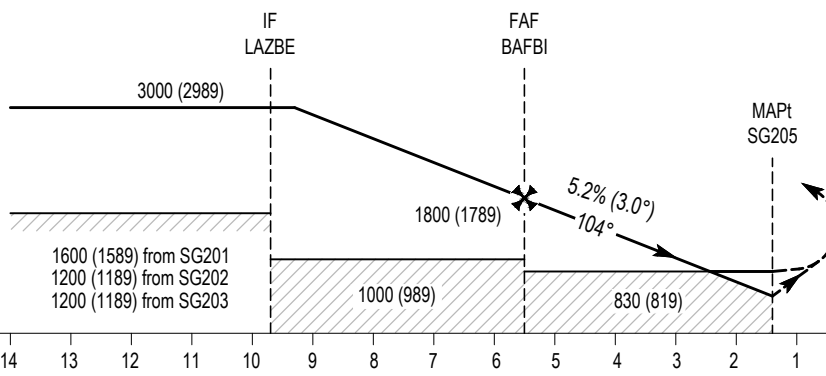


MISSED APPROACH:
At SG205 turn left (MAX IAS 130 KTS) direct to LAZBE to hold (MNM 3000 ft) or as directed by ATC.

TRANSITION
ALTITUDE 5000 ft

RDH 50

ELEV 11 ft (THR RWY 10)



NOTE:

- Instrument approaches only available when Air Traffic Control Zone is active unless authorised by Flight Operations Dept of the Irish Aviation Authority.
- Non Precision Approach RWY and Visibility 1000m at Aerodrome.

Recommended Profile on Final Approach

OCA (H)	A		B								
	A		B								
LNAV (MACG 2.5 %)	760 (749)										
LNAV (MACG 5.0 %)	500 (489)										
LNAV / VNAV	820 (809)	830 (819)									
Visual Manoeuvring (Heights AAL)	1420 (1405)										
	850 (835)		North of RWY 10/28								
					DIST THR RWY 10 (NM)	5	4	3	2		
					ALT / HT (ft)	1650 (1639)	1330 (1319)	1020 (1009)	700 (689)		
					Ground Speed	kts	80	100	110	120	130
					Descent rate gradient - 5.2% (3.0°) 318 ft/NM	ft / min	430	530	580	640	690

CHANGE: Missed App. Text, Visual Manoeuvring OCA(H), Notes.

Sligo RNP Z RWY10 via SG201

Nav. Spec.	WPT Name	Latitude (N)/ Longitude (W)	Path Term	Fly-By Fly-over	True track / Mag track	Distance (NM)	Upper limit / Lower limit	Speed Limit (kts)	VPA (°) / TCH (ft)	Remarks
RNP APCH	SG201	541341.8 / 0085417.1	IF	-	-	-	- / A3000	-	-	-
RNP APCH	LAZBE	541836.4 / 0085244.8	TF	Fly-By	010.4 / 014	5.0	- / A3000	-	-	-
RNP APCH	BAFBI	541750.8 / 0084538.2	TF	Fly-By	100.3 / 104	4.2	-	-	-	R
RNP APCH	SG205	541707.0 / 0083847.1	CF	Fly-Over	100.3 / 104	-	-	130	3.00 / 50	284° SLG / D1.4 SLG
RNP APCH	LAZBE	541836.4 / 0085244.8	DF	Fly-By	-	-	- / A3000	-	-	L

Sligo RNP Z RWY10 via SG202

Nav. Spec.	WPT Name	Latitude (N)/ Longitude (W)	Path Term	Fly-By Fly-over	True track / Mag track	Distance (NM)	Upper limit / Lower limit	Speed Limit (kts)	VPA (°) / TCH (ft)	Remarks
RNP APCH	SG202	541930.2 / 0090108.7	IF	-	-	-	- / A3000	-	-	-
RNP APCH	LAZBE	541836.4 / 0085244.8	TF	Fly-By	100.3 / 104	5.0	- / A3000	-	-	-
RNP APCH	BAFBI	541750.8 / 0084538.2	TF	Fly-By	100.3 / 104	4.2	-	-	-	-
RNP APCH	SG205	541707.0 / 0083847.1	CF	Fly-Over	100.3 / 104	-	-	130	3.00 / 50	284° SLG / D1.4 SLG
RNP APCH	LAZBE	541836.4 / 0085244.8	DF	Fly-By	-	-	- / A3000	-	-	L

Sligo RNP Z RWY10 via SG203

Nav. Spec.	WPT Name	Latitude (N)/ Longitude (W)	Path Term	Fly-By Fly-over	True track / Mag track	Distance (NM)	Upper limit / Lower limit	Speed Limit (kts)	VPA (°) / TCH (ft)	Remarks
RNP APCH	SG203	542330.9 / 0085112.2	IF	-	-	-	- / A3000	-	-	-
RNP APCH	LAZBE	541836.4 / 0085244.8	TF	Fly-By	190.4 / 194	5.0	- / A3000	-	-	-
RNP APCH	BAFBI	541750.8 / 0084538.2	TF	Fly-By	100.3 / 104	4.2	-	-	-	L
RNP APCH	SG205	541707.0 / 0083847.1	CF	Fly-Over	100.3 / 104	-	-	130	3.00 / 50	284° SLG / D1.4 SLG
RNP APCH	LAZBE	541836.4 / 0085244.8	DF	Fly-By	-	-	- / A3000	-	-	L

Hold Identification

Holding Fix	Latitude (N) / Longitude (W)	Inbound True Track (degrees)	Inbound Mag Track (degrees)	Maximum Indicated Airspeed (kts)	Minimum Holding Altitude/ Level (FL/ft)	Maximum Holding Altitude/ Level (FL/ft)	Outbound time (min)	Direction of Turn
LAZBE	541836.4 / 0085244.8	100.3	104	180	A3000	FL075	1	L