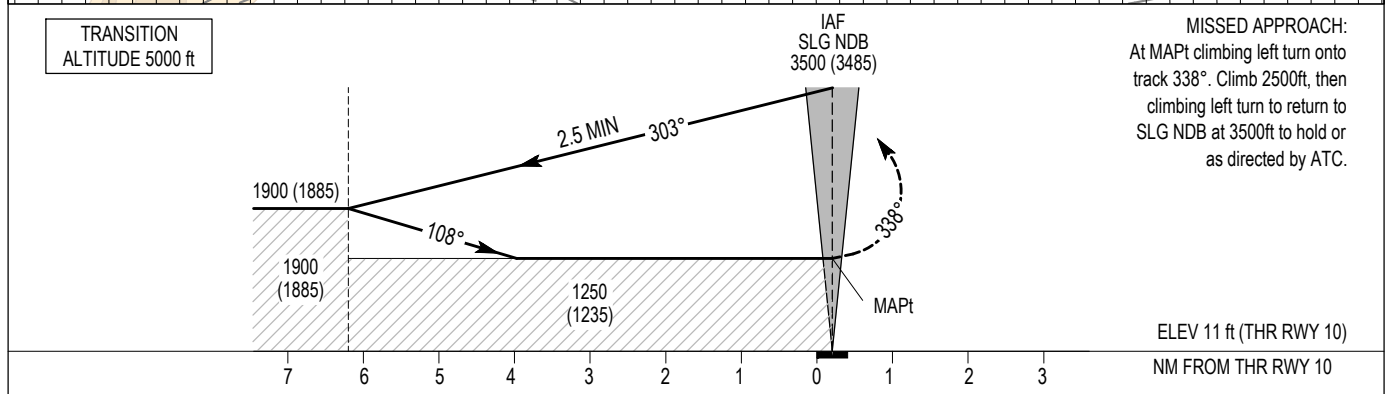
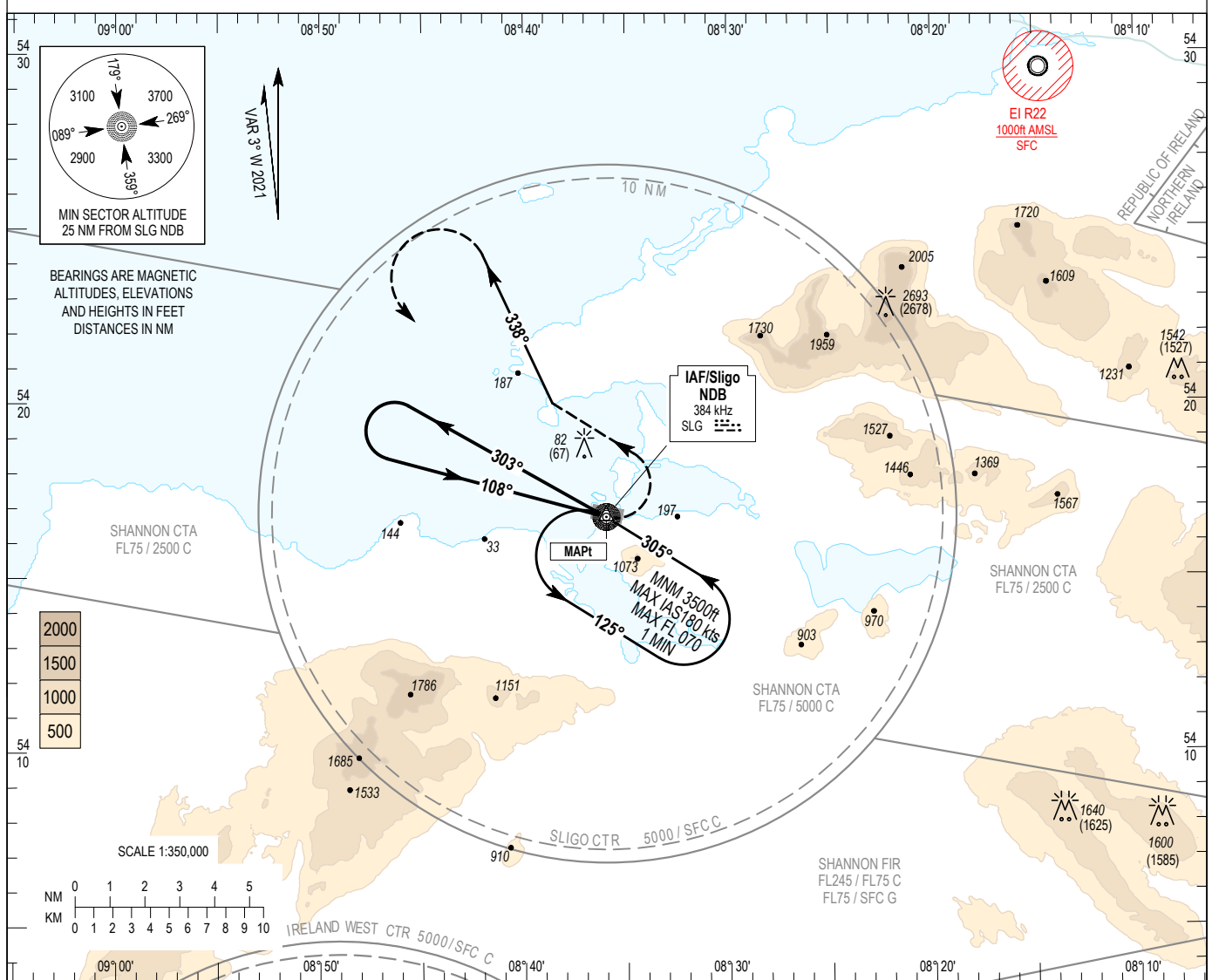


<p>INSTRUMENT APPROACH CHART- ICAO</p>	<p>AERODROME ELEV 15 ft HEIGHTS RELATED TO AD ELEVATION</p>	<table border="1" style="font-size: small;"> <tr><td>TWR</td><td>122.100</td></tr> <tr><td>GND</td><td>122.100</td></tr> <tr><td>AFIS</td><td>122.100</td></tr> <tr><td>Shannon ACC</td><td>124.700</td></tr> </table>	TWR	122.100	GND	122.100	AFIS	122.100	Shannon ACC	124.700	<p>SLIGO/SLIGO NDB Z RWY 10 (ACFT CAT A, B)</p>
TWR	122.100										
GND	122.100										
AFIS	122.100										
Shannon ACC	124.700										



OCA (H)	A	B	<p>NOTE:</p> <ol style="list-style-type: none"> Approach offset 5° to the North. MAX final approach IAS limited to 130 kts. Commence turn 2.5 minutes after crossing IAF outbound. Instrument approaches only available when Air Traffic Control Zone is active unless authorised by Operating Standards Dept of the Irish Aviation Authority. Non Precision Approach RWY and Visibility 1000m at Aerodrome. 																				
Straight-in Approach	1250 (1235)							<table border="1" style="font-size: x-small;"> <tr><td>Ground Speed</td><td>kts</td><td>80</td><td>100</td><td>110</td><td>120</td><td>130</td></tr> <tr><td>Descent rate gradient - 4.1% (2.3°)</td><td>ft / min</td><td>330</td><td>410</td><td>450</td><td>490</td><td>530</td></tr> </table>		Ground Speed	kts	80	100	110	120	130	Descent rate gradient - 4.1% (2.3°)	ft / min	330	410	450	490	530
Ground Speed	kts	80						100	110	120	130												
Descent rate gradient - 4.1% (2.3°)	ft / min	330	410	450	490	530																	
Visual Manoeuvring (Heights AAL)	1420 (1405)																						

CHANGE: Note 5.

RWY 10 NDB Z Approach

Fix	MAPt SLG NDB	IAF SLG NDB
Fix Coordinates	541643.4N 0083600.3W	541643.4N 0083600.3W
Fix Formation Bearing °True	-	-
Fix Formation Distances	-	-

Holding Identification – 305°M, L

Holding Fix	Latitude / Longitude	Inbound True Track (degrees)	Inbound Magnetic Track (degrees)	Maximum Indicated Airspeed (kts)	Maximum/ Minimum Holding Level / Altitude (FL/ft)	Time (min)	Direction of Turn
SLG NDB	541643.4N 0083600.3W	302.09	305	180	FL070/3500	1	L