

## — IRELAND —

**AIRAC**

Phone: +353 (0)61 703 750  
Fax: +353 (0)61 366 245  
AFS: EINNZPZX  
Email: aisops@airnav.ie  
URL: http://www.airnav.ie



Aeronautical Information Service  
Ballycasey Cross  
Co. Clare  
V14 C446  
IRELAND

AIP SUP: 009/2025  
Effective Date: 02-Oct-2025  
Publication Date: 21-Aug-2025  
End Date: 09-Jul-2026

---

## DUBLIN AIRPORT (EIDW) SOUTH APRON TAXIWAY WIDENING WORKS - PHASE 2, 3 AND 4

### **This Supplement Replaces Supplement Nr. 027/2022**

Commencing in October 2025, for a period of approximately 40 weeks, construction works will be carried out on a phased basis in the vicinity of Taxiways E1, T, B2, Link 1, RWY 28L and RWY 34 Thresholds and the South Apron. The location of the works in each phase are depicted in the appendices to this Supplement. If Low Visibility Conditions occur, or are forecast to occur during planned working hours, works will not commence.

Working hours will include day and night works to minimise disruption to aircraft operations.

**Phase 2** – Works currently in progress in the vicinity of TWY T with no impact on aircraft operations.

**Phase 3** – (October to December 2025) – Refer to Appendices 1, 2 & 3 for location.

#### **Operational Impact:**

1. Work will affect the combined runway threshold area of RWYs 34 and 28L (see Appendices 2 & 3).
2. TWYs E1 and B2 will be withdrawn from service for the duration of this phase.
3. RWY 16-34 will be unavailable for landing and take-off operations.
4. TWY A will be reopened for this phase of works. The current restrictions in AIP Section AD 2.20 (1.3 Taxiway Restrictions Table) will apply with the following additional restrictions:
  - \* No left turn from TWY A - TWY F2.
  - \* TWY A not available in LVP conditions.
5. The current restriction in AIP Section AD 2.20 (1.2 Turning) "No turns should be made by aircraft from TWY A to TWY F1 or vice versa" will not apply.
6. Between 22:30 to 04:30 (local time), Monday to Sunday inclusive, TWYs F1 and T will be closed.

#### **Temporary Relocation of RWY 28L Threshold.**

#### **Operational Impact:**

1. Westerly operations: RWY 28L: 14:00 to 04:15 (local time Mon to Sat).
2. Easterly operations: RWY 10R: 23:00 to 04:15 (local time Mon to Sat).
3. Temporary Displaced RWY 28L THR will not be used during CAT II/III Operations.
4. Outside working hours, RWY 10R-28L will be available for landing and take-off operations.

#### **RWY 28L:**

1. Take-off operations only from the temporary displaced THR with reduced length – Refer to Table 1

(Reduced Declared Distances).

- Aircraft entering RWY 28L from TWY S1 must taxi forward to the temporary displaced threshold for take-off.

#### **RWY 10R:**

- Available for take-off and landing operations with reduced length – Refer to Table 1 (Reduced Declared Distances).
- Preferred exit for landing aircraft via TWY S2 unless safety dictates continuing to exit via TWY S1 at the temporary RWY end and taxiing forward to TWY S1.
- No intersection take-offs are permitted from TWYs S4, S5 or S6.

**Table 1: - Reduced Declared Distances**

RUNWAY	TORA (M)	TODA (M)	ASDA (M)	LDA (M)
10R	2141	2201	2141	2141
28L	2141	2354	2197	2141

#### **Temporary Displaced RWY 28L Threshold & Lighting:**

- Temporary threshold at 53°25'14.41"N 006°15'28.79"W, elevation 208FT AMSL (data whose accuracy has not been quality assured).
- Equipped with threshold/end lights, wing bars, temporary PAPIs (3.0°, MEHT 76.0FT), and threshold ID lights (visible only during working hours).

#### **Runway Lighting During Temporary Displaced RWY 28L Threshold Operations:**

- RWY 28L: runway approach and TDZ lighting unavailable.
- RWY 10R: CAT I runway approach and TDZ lighting available.
- RWY 10R & RWY 28L: runway centreline lighting unavailable.
- RWY 10R & RWY 28L: runway edge lighting available.

#### **Instrument Approach Procedures:**

<b>Instrument Approach Procedures (IAPs) During Displaced Threshold Works</b>	
<b>Unavailable during Temporary Displaced Threshold Operations</b>	ILS CAT II/III FOR RWY 28L
	RWY 28L RNP AND ILS IAPs (Refs: EIDW AD 2.24-27 & 2.24-28)
<b>Not available at any time</b>	VOR IAP for RWY 28L (EIDW AD 2.24-28) VOR IAP for RWY 10R (EIDW Ad 2.24-37)
<b>Available during Temporary Displaced Threshold Operations</b>	RNP T IAP to Displaced Threshold 28L (Ref: EIDW AD 2.24-46) – only during working hours
	RWY 10R: RNP, ILS CAT I/II, and LOC (Refs: EIDW AD 2.24-26 & 2.24-27).
<b>Unavailable outside Temporary Displaced Threshold operations</b>	RNP T IAP to Displaced Threshold 28L (Ref: EIDW AD 2.24-46)

**Note:** At the end of this phase, the following will come into effect:

1. New TWY designated B1 will be introduced to accommodate aircraft with a wingspan less than 65m.
2. TWY T will be permanently withdrawn from service.
3. TWY B2 will be reintroduced.
4. TWY A will be closed.
5. TWY E1 will reopen with a co-located CATI/II/III Runway Holding Position.

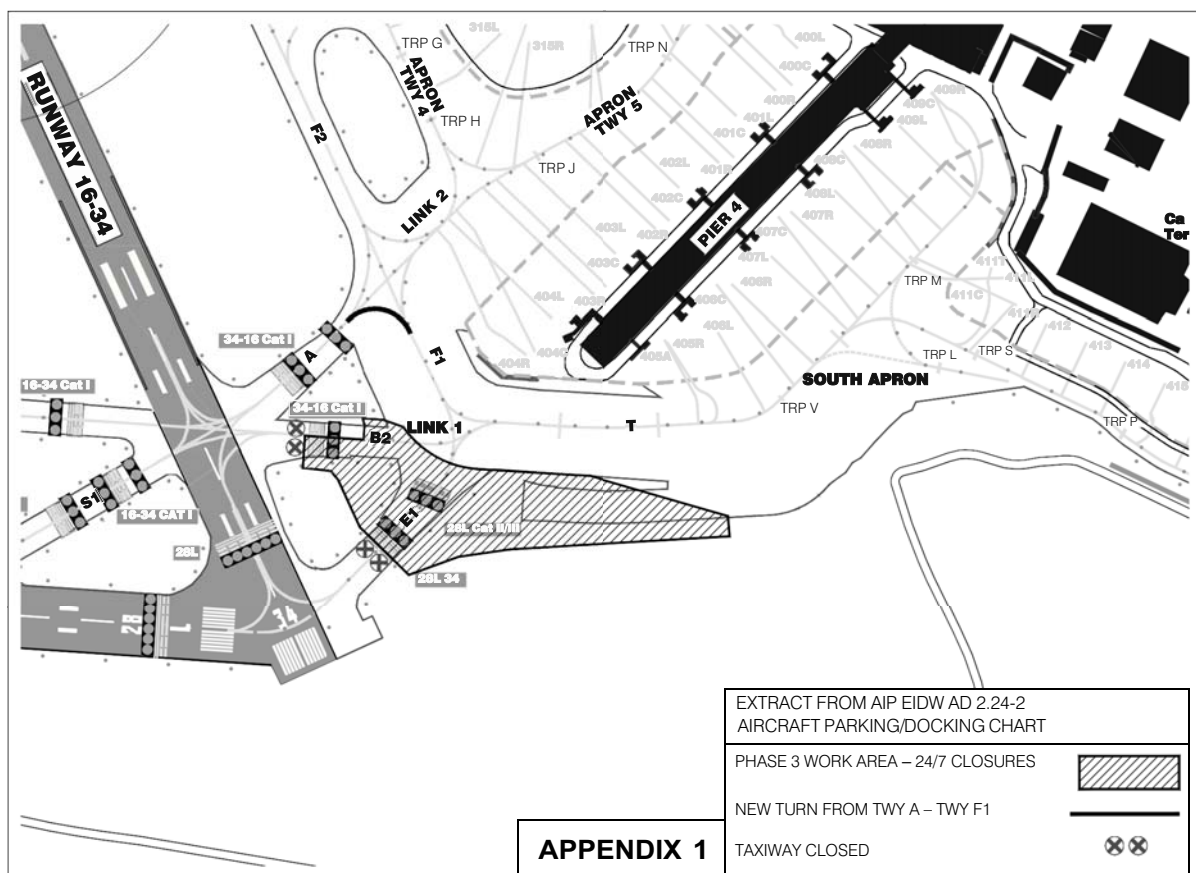
**Phase 4 – (January 2026 – May 2026) – Refer to Appendices 4, 5 & 6 for location**

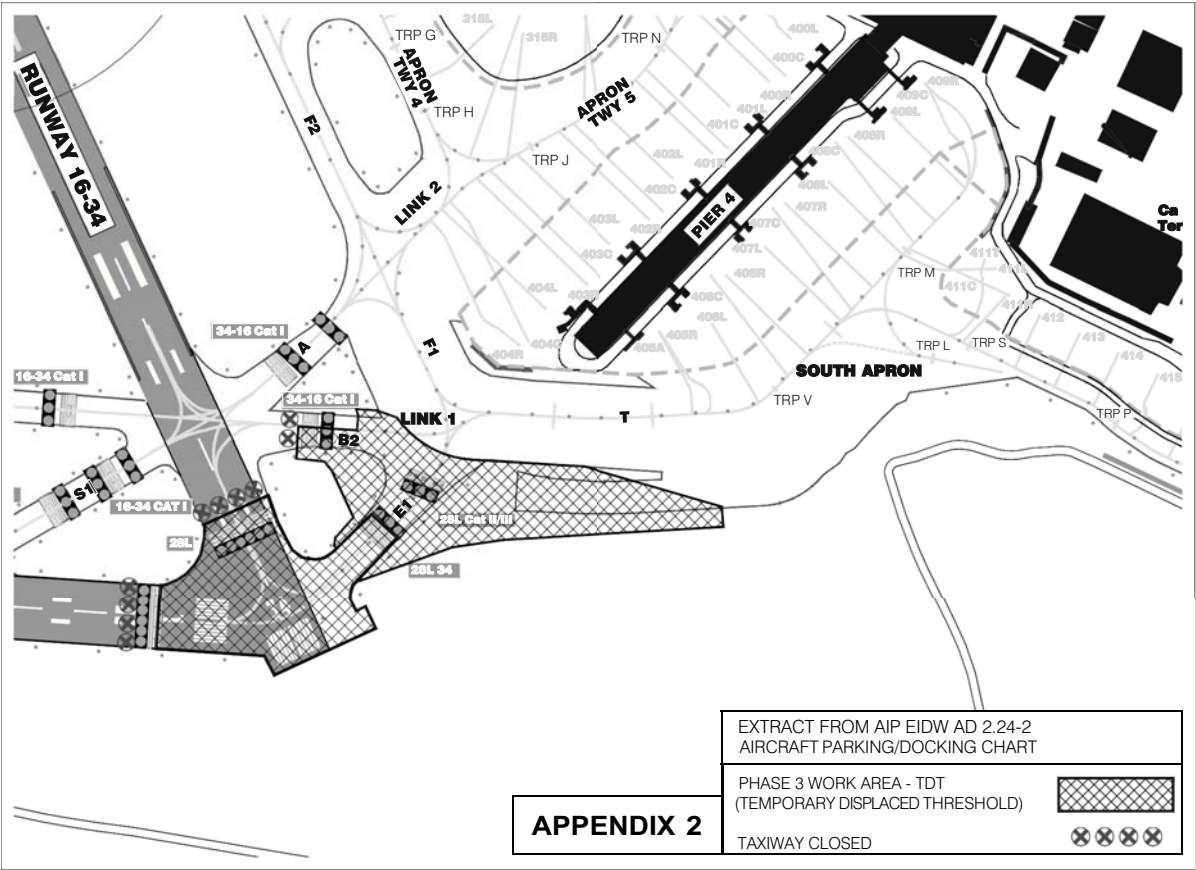
**Operational Impact:**

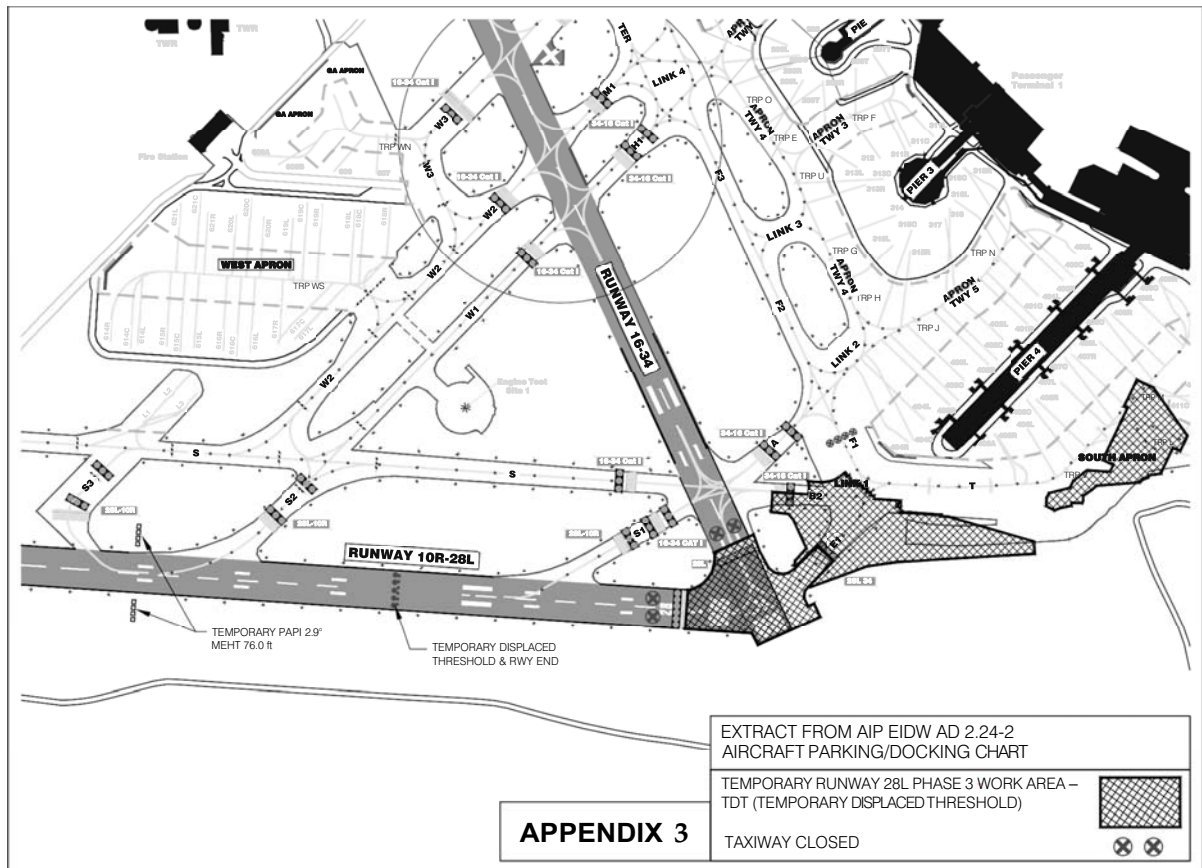
1. Aircraft stands 405A, 405R, 406L and 406C will be temporarily closed.
2. The following TWYs E1, B2, F1, and B1 will be withdrawn from service nightly from 22:30 to 04:15 (local time), Monday to Sunday inclusive.

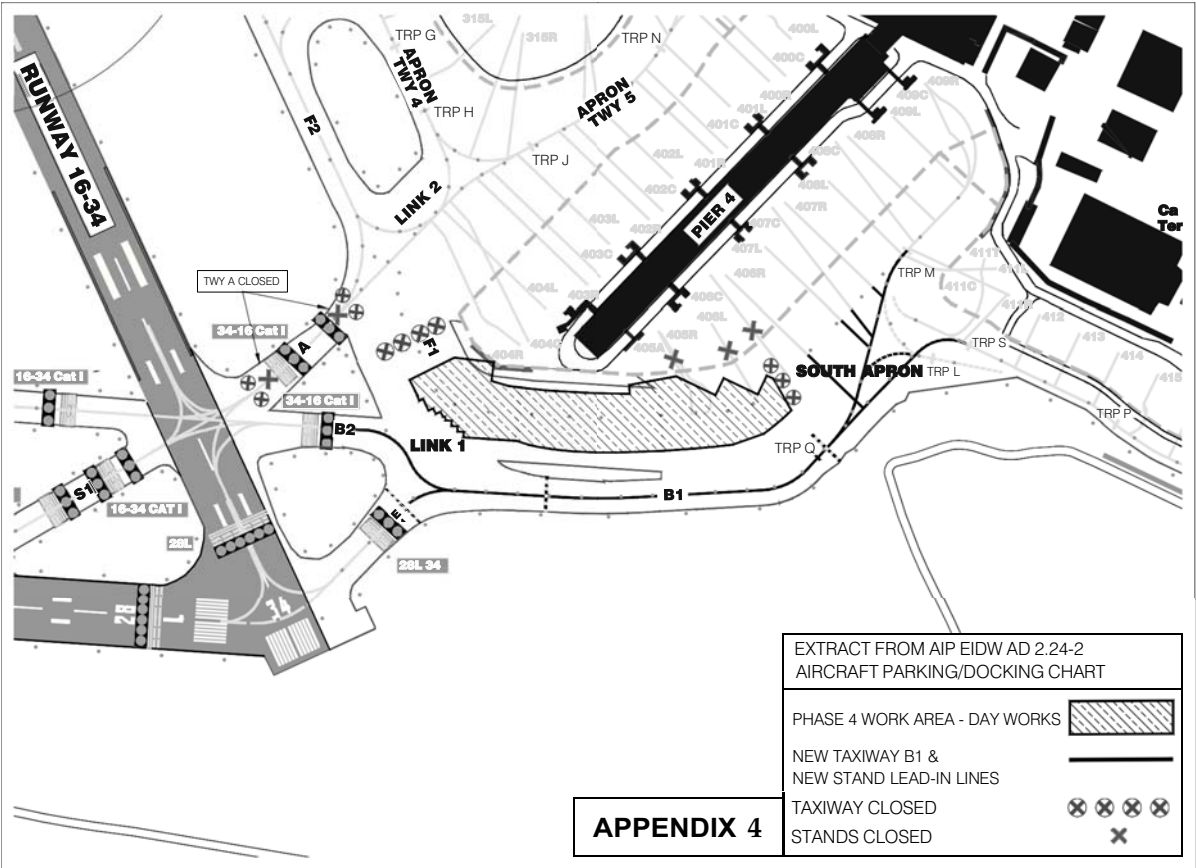
**Note:** At the end of this phase, new TWY designated Z will be introduced to accommodate aircraft with a wingspan less than 65m.

Exact dates and times of works within phases will be promulgated by NOTAM with reference to this Supplement.



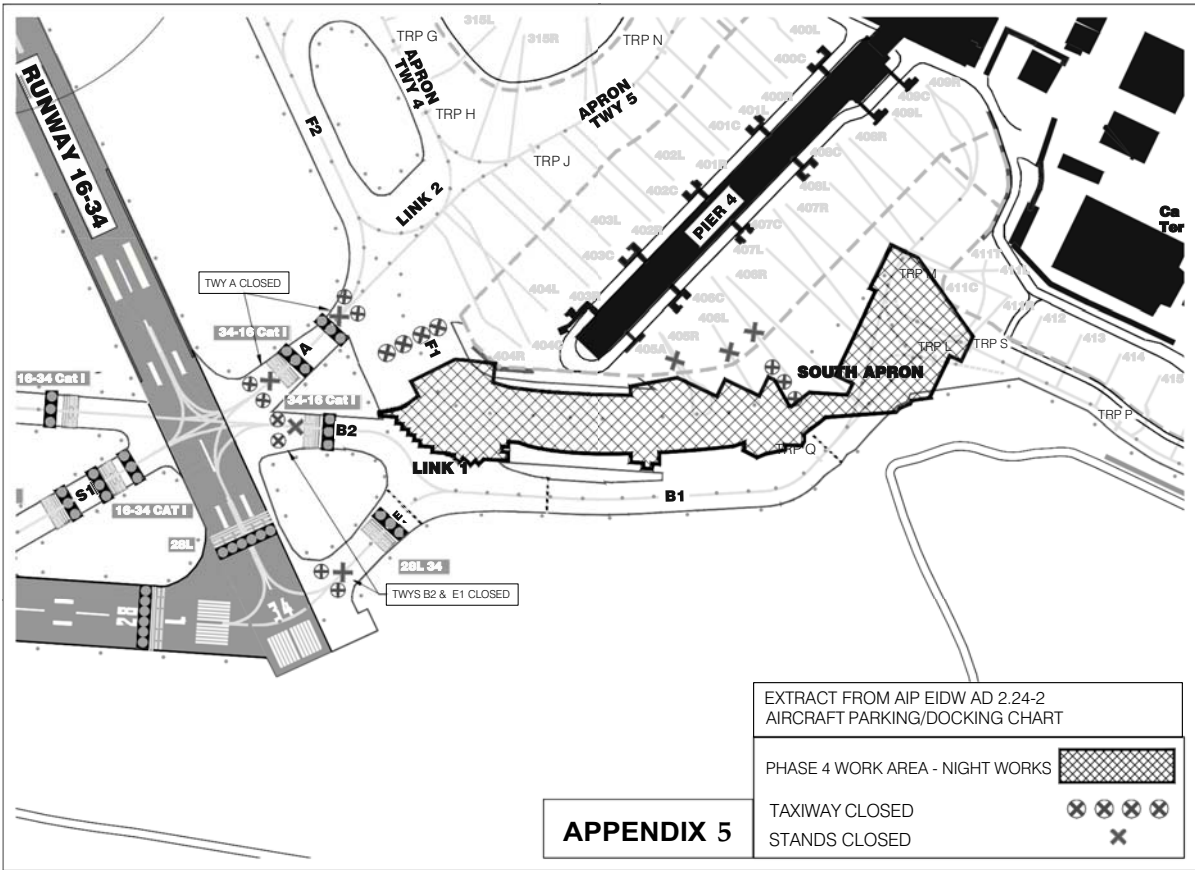


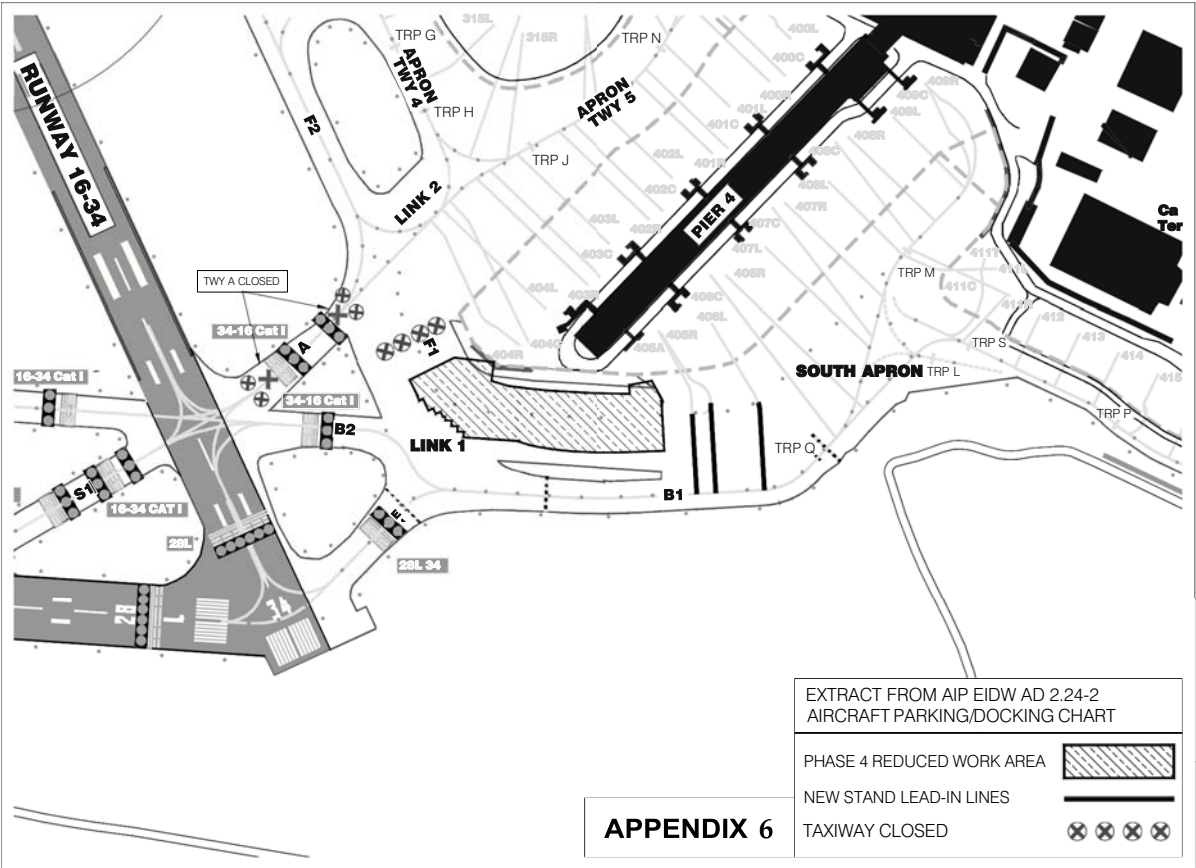




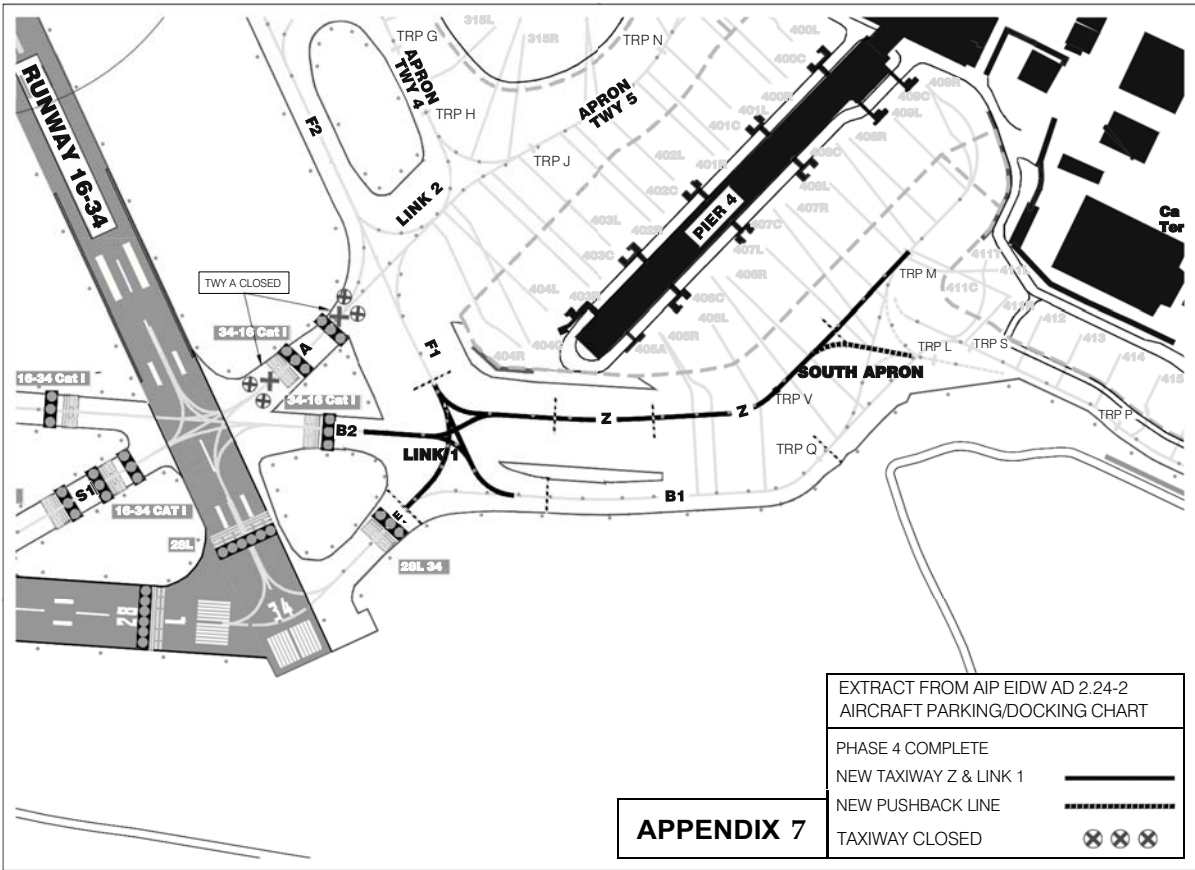
APPENDIX 4











THIS PAGE INTENTIONALLY LEFT BLANK