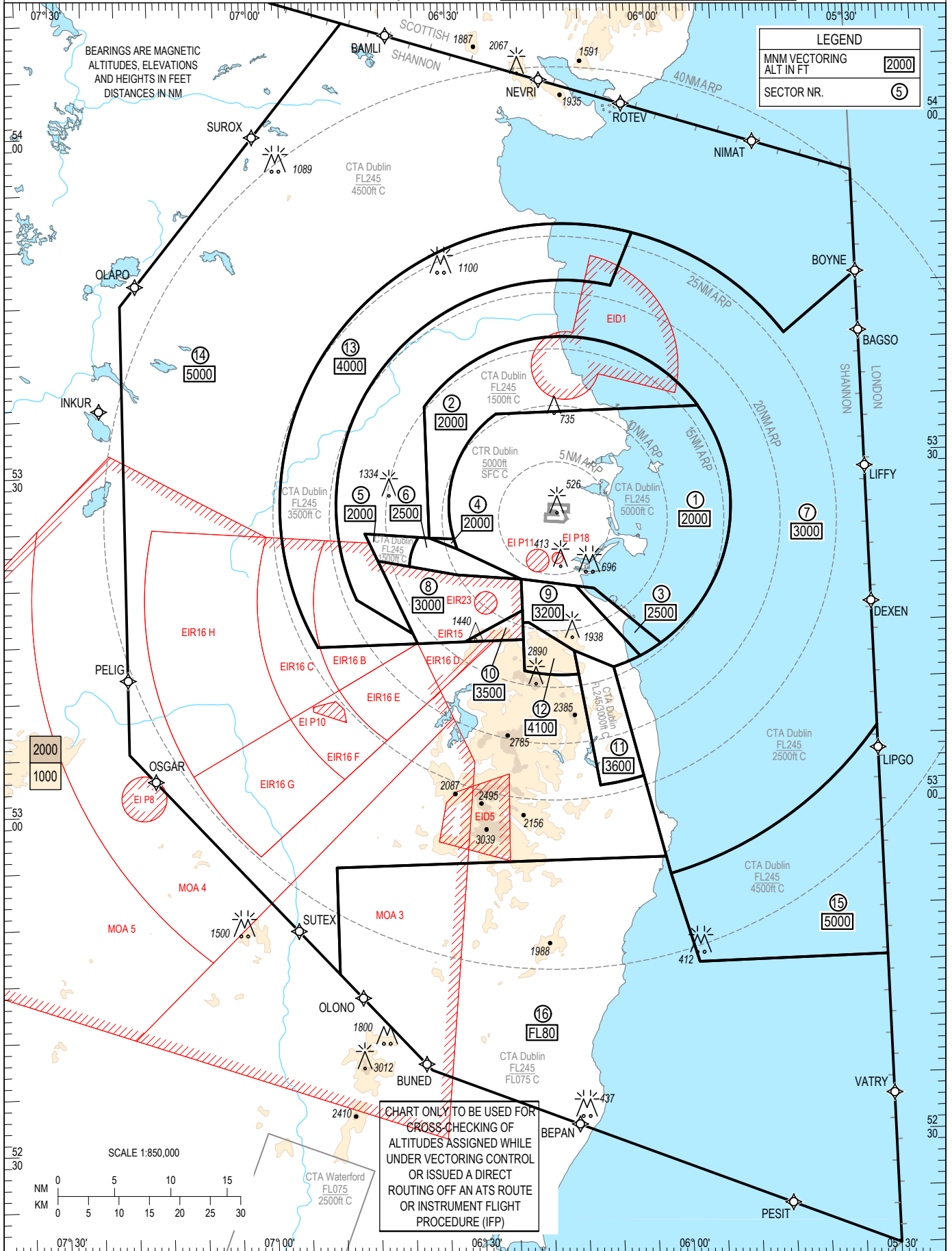


ATC SURVEILLANCE MINIMUM ALTITUDE CHART - ICAO

AERODROME ELEV 242ft
TRANS ALT 5000ft
TRANS LEVEL by ATC

Dublin ATIS	124.530	Dublin APP	121.100
Dublin TWR	118.600	Dublin GND	121.800
ACC Lower North	132.580	ACC Upper North	129.180
ACC Lower South	120.755	ACC Upper South	135.655

DUBLIN / DUBLIN



CHANGE: MAG VAR & MSA removed. Note 1: Sector 16 changed to FL80 RWY 28R and 10L. Added.

NOTES:

1. Levels/altitudes assigned by ATC include a correction for low temperature effect where necessary.
2. Max IAS 250 KT below FL100.
3. COMMUNICATION FAILURE: In accordance with procedures described in AIP Ireland EIDW AD 2.22, paragraph 5.3 Communications failure procedures for arriving aircraft.

ATC Surveillance Minimum Altitude Coordinates

Sector 1. MNM ALT **A2000**

53°34'41"N 006°24'22"W, arc 10 NM radius centre
53°26'21"N 006°15'08"W, 53°22'52"N 006°30'48"W,
53°20'00"N 006°21'30"W, 53°18'57"N 006°10'47"W,
53°13'54"N 006°01'14"W, arc 15 NM radius centre
53°26'21"N 006°15'08"W, 53°34'45"N 005°54'20"W,
53°34'41"N 006°24'22"W

Sector 2. MNM ALT **A2000**

53°34'41"N 006°24'22"W, arc 10 NM radius centre
53°26'21"N 006°15'08"W, 53°23'46"N 006°31'16"W,
53°23'55"N 006°34'55"W, 53°35'31"N 006°35'00"W,
arc 15 NM radius centre 53°26'21"N 006°15'08"W,
53°34'45"N 005°54'20"W, 53°34'41"N 006°24'22"W

Sector 3. MNM ALT **A2500**

53°13'54"N 006°01'14"W, 53°18'57"N 006°10'47"W
53°19'13"N 006°13'27"W, 53°12'50"N 006°04'22"W
arc 15 NM radius centre 53°26'21"N 006°15'08"W,
53°13'54"N, 006°01'14"W

Sector 4. MNM ALT **A2000**

53°22'52"N 006°30'48"W, 53°23'55"N 006°34'55"W,
53°23'46"N 006°31'16"W, arc 10 NM radius centre
53°26'21"N 006°15'08"W, 53°22'52"N 006°30'48"W

Sector 5. MNM ALT **A2000**

53°24'01"N 006°36'30"W,
arc 5 NM radius centre 53°21'10"N 006°29'38"W,
53°21'27"N 006°37'58"W, 53°22'02"N 006°42'37"W,
53°24'28"N 006°44'26"W, 53°24'01"N 006°36'30"W

Sector 6. MNM ALT **A2500**

53°23'55"N 006°34'55"W, 53°22'52"N 006°30'48"W,
53°20'00"N 006°21'30"W, 53°20'06"N 006°23'12"W,
53°20'34"N 006°30'56"W, 53°21'27"N 006°37'58"W,
arc 5 NM radius centre 53°21'10"N 006°29'38"W,
53°24'01"N 006°36'30"W, 53°23'55"N 006°34'55"W

Sector 7. MNM ALT **A3000**

53°18'38"N 006°45'56"W, 53°15'29"N 006°37'46"W,
53°24'28"N 006°44'26"W, 53°23'55"N 006°34'55"W,
53°35'31"N 006°35'00"W, arc 15 NM radius centre
53°26'21"N 006°15'08"W, 53°11'56"N 006°08'21"W,
52°53'28"N 006°01'08"W, arc 34 NM radius centre
53°26'21"N 006°15'08"W, 53°05'51"N 005°30'00"W,
53°46'02"N 005°30'00"W, 53°40'53"N 005°41'04"W,
arc 25 NM radius centre 53°26'21"N 006°15'08"W,
53°50'16"N 006°03'06"W, 53°45'40"N 006°06'36"W,
arc 20 NM radius centre 53°26'21"N 006°15'08"W,
53°18'38"N 006°45'56"W

Sector 8. MNM ALT **A3000**

53°22'02"N 006°42'37"W, 53°14'36"N 006°37'07"W,
53°14'38"N 006°30'07"W, 53°17'13"N 006°21'30"W,
53°20'00"N 006°21'30"W, 53°20'34"N 006°30'56"W,
53°22'02"N 006°42'37"W

Sector 9. MNM ALT **A3200**

53°11'56"N, 006°08'22"W,
arc 15 NM radius centre 53°26'21"N 006°15'08"W,
53°12'50"N 006°04'22"W, 53°19'13"N 006°13'27"W,
53°20'00"N, 006°21'30"W, 53°17'13"N 006°21'30"W,
53°16'08"N 006°21'30"W, 53°16'08"N 006°20'36"W,
53°13'30"N 006°14'05"W, 53°11'56"N 006°08'22"W

Sector 10. MNM ALT **A3500**

53°17'13"N 006°21'30"W, 53°14'38"N 006°30'07"W,
53°14'39"N 006°21'30"W, 53°17'13"N 006°21'30"W

Sector 11. MNM ALT **A3600**

53°01'31"N 006°10'57"W,
arc 25 NM radius centre 53°26'21"N 006°15'08"W,
53°02'13"N 006°04'32"W, 53°11'56"N 006°08'21"W,
53°13'30"N 006°14'05"W, 53°01'31"N 006°10'57"W

Sector 12. MNM ALT **A4100**

53°11'24"N 006°13'32"W, 53°13'30"N 006°14'05"W,
53°16'08"N 006°20'36"W, 53°16'08"N 006°21'30"W,
53°11'52"N 006°21'30"W, arc 15 NM radius centre
53°26'21"N 006°15'08"W, 53°11'24"N 006°13'32"W

Sector 13. MNM ALT **A4000**

53°18'38"N 006°45'56"W, 53°15'29"N 006°37'46"W,
53°14'36"N 006°37'07"W, 53°14'32"N 006°51'52"W,
arc 25 NM radius centre 53°26'21"N 006°15'08"W,
53°50'16"N 006°03'06"W, 53°45'40"N 006°06'36"W,
arc 20 NM radius centre 53°26'21"N 006°15'08"W,
53°18'38"N 006°45'56"W

Sector 14. MNM ALT **A5000**

54°09'42"N 006°45'38"W, 53°55'00"N 005°30'00"W,
53°46'02"N 005°30'00"W, 53°40'53"N 005°41'04"W,
arc 25 NM radius centre 53°26'21"N 006°15'08"W,
53°14'32"N 006°51'52"W, 53°14'39"N 006°21'30"W,
53°11'52"N 006°21'30"W,
arc 15 NM radius centre 53°26'21"N 006°15'08"W,
53°11'24"N 006°13'32"W, 53°01'31"N 006°10'57"W,
arc 25 NM radius centre 53°26'21"N 006°15'08"W,
53°02'13"N 006°04'32"W, 52°55'00"N 006°01'44"W,
52°55'00"N 006°50'00"W, 52°45'34"N 006°50'00"W,
53°05'26"N 007°20'00"W, 53°45'07"N 007°20'00"W,
54°06'37"N 006°50'00"W, 54°09'42"N 006°45'38"W

Sector 15. MNM ALT **A5000**

53°05'51"N 005°30'00"W, 52°45'34"N 005°30'00"W,
52°45'34"N 005°57'27"W, 52°53'28"N 006°01'08"W,
arc 34 NM radius centre 53°26'21"N 006°15'08"W,
53°05'51"N 005°30'00"W

Sector 16. MNM ALT **FL80**

52°55'00"N 006°50'00"W, 52°55'00"N 006°01'44"W,
52°53'29"N 006°01'08"W, 52°45'34"N 005°57'27"W,
52°45'34"N 005°30'00"W, 52°20'00"N 005°30'00"W,
52°36'50"N 006°37'01"W, 52°45'34"N 006°50'00"W,
52°55'00"N 006°50'00"W