

ATC SURVEILLANCE MINIMUM
ALTITUDE CHART - ICAO

AERODROME ELEV 46 ft
TRANS ALT 5000ft
TRANS LEVEL by ATC

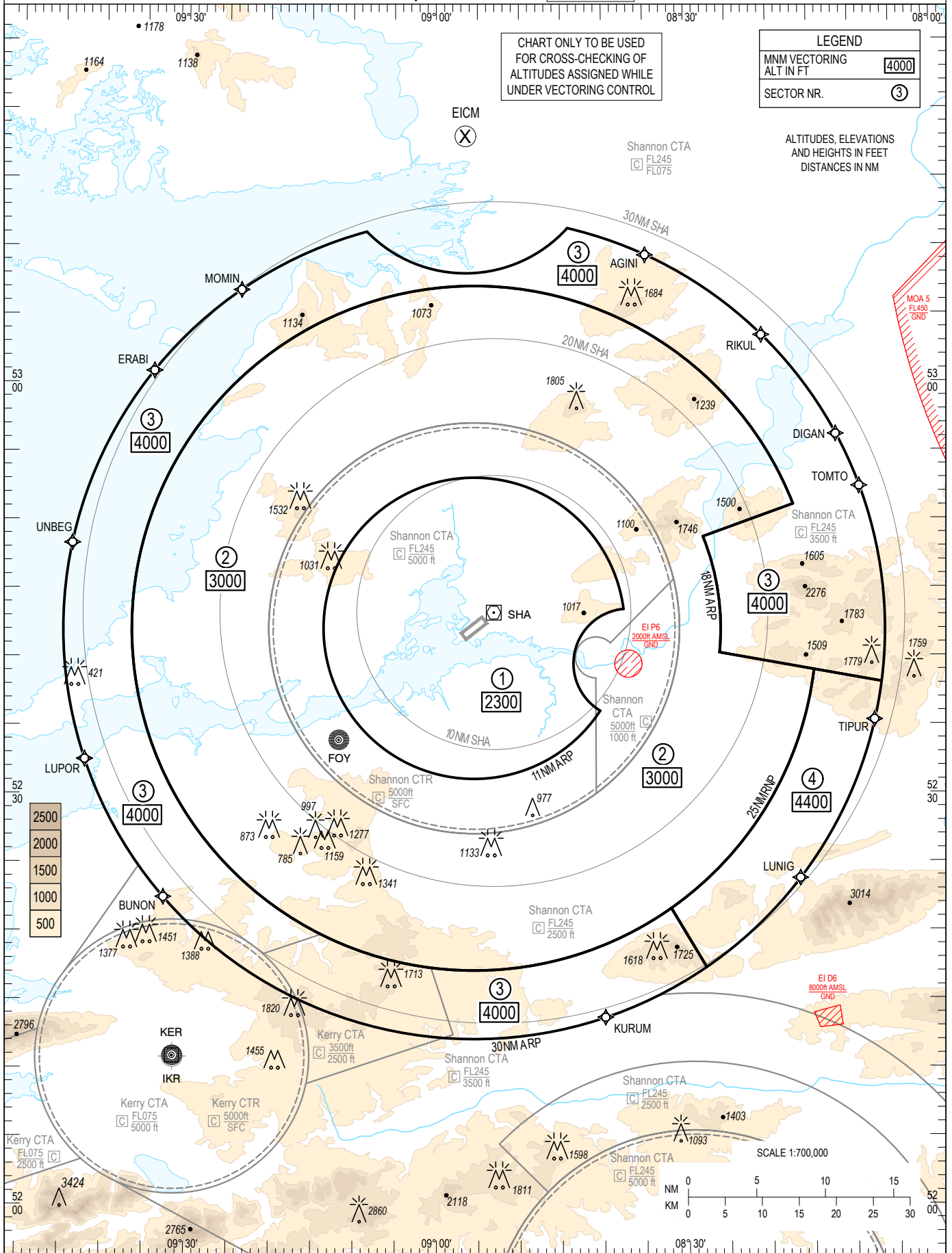
ATIS 130.955
TWR 118.700
GND 121.800
APP 121.400

SHANNON / SHANNON

CHART ONLY TO BE USED
FOR CROSS-CHECKING OF
ALTITUDES ASSIGNED WHILE
UNDER VECTORIZING CONTROL

LEGEND	
MNM VECTORIZING ALT IN FT	4000
SECTOR NR.	3

ALTITUDES, ELEVATIONS
AND HEIGHTS IN FEET
DISTANCES IN NM



INFORMATION BOX: 1. ALTITUDE TEMPERATURE CORRECTION to 0°C taken into account in determining minimums. 2. MAX IAS 250kts below FL100.
 3. COMMUNICATION FAILURE: In accordance with procedures described in AIP Ireland, EINN AD 2.22 FLIGHT PROCEDURES, paragraph 5.2.4 Communications failure procedures for arriving aircraft.
WARNING: Set hPa only.

CHANGE: New chart.

ATC Surveillance Minimum Altitude Coordinates

Sector 1. MNM ALT **2300**

52°43'29"N 008°37'32"W,
arc anti-clockwise 4 NM radius centre 52°39'30"N 008°36'59"W,
52°36'05"N 008°40'23"W,
arc 11 NM radius centre 52°42'07"N 008°55'29"W,
52°43'29"N 008°37'32"W

Sector 2. MNM ALT **3000**

Inner boundary:

52°43'29"N 008°37'32"W,
arc anti-clockwise 4 NM radius centre 52°39'30"N 008°36'59"W,
52°36'05"N 008°40'23"W,
arc 11 NM radius centre 52°42'07"N 008°55'29"W,
52°43'29"N 008°37'32"W

Outer boundary:

52°51'06"N 008°17'04"W, 52°48'46"N 008°27'57"W,
arc 18 NM radius centre 52°42'07"N 008°55'29"W,
52°40'19"N 008°26'03"W, 52°39'02"N 008°14'43"W,
arc 25 NM radius centre 52°42'07"N 008°55'29"W,
52°51'06"N 008°17'04"W

Sector 3. MNM ALT **4000**

52°38'06"N 008°06'38"W, 52°40'19"N 008°26'03"W,
arc anti-clockwise 18 NM radius centre 52°42'07"N 008°55'29"W,
52°48'46"N 008°27'57"W, 52°51'06"N 008°17'04"W,
arc anti-clockwise 25 NM radius centre 52°42'07"N 008°55'29"W,
52°21'40"N 008°32'00"W, 52°17'21"N 008°27'50"W,
arc 30 NM radius centre 52°42'07"N 008°55'29"W,
53°11'03"N 009°08'26"W,
arc anti-clockwise 10 NM radius centre 53°18'01"N 008°56'30"W,
53°11'18"N 008°44'11"W,
arc 30 NM radius centre 52°42'07"N 008°55'29"W,
52°38'06"N 008°06'38"W

Sector 4. MNM ALT **4400**

52°38'06"N 008°06'38"W, 52°39'02"N 008°14'43"W,
arc 25 NM radius centre 52°42'07"N 008°55'29"W,
52°21'40"N 008°32'00"W, 52°17'21"N 008°27'50"W,
arc anti-clockwise 30 NM radius centre 52°42'07"N 008°55'29"W,
52°38'06"N 008°06'38"W