

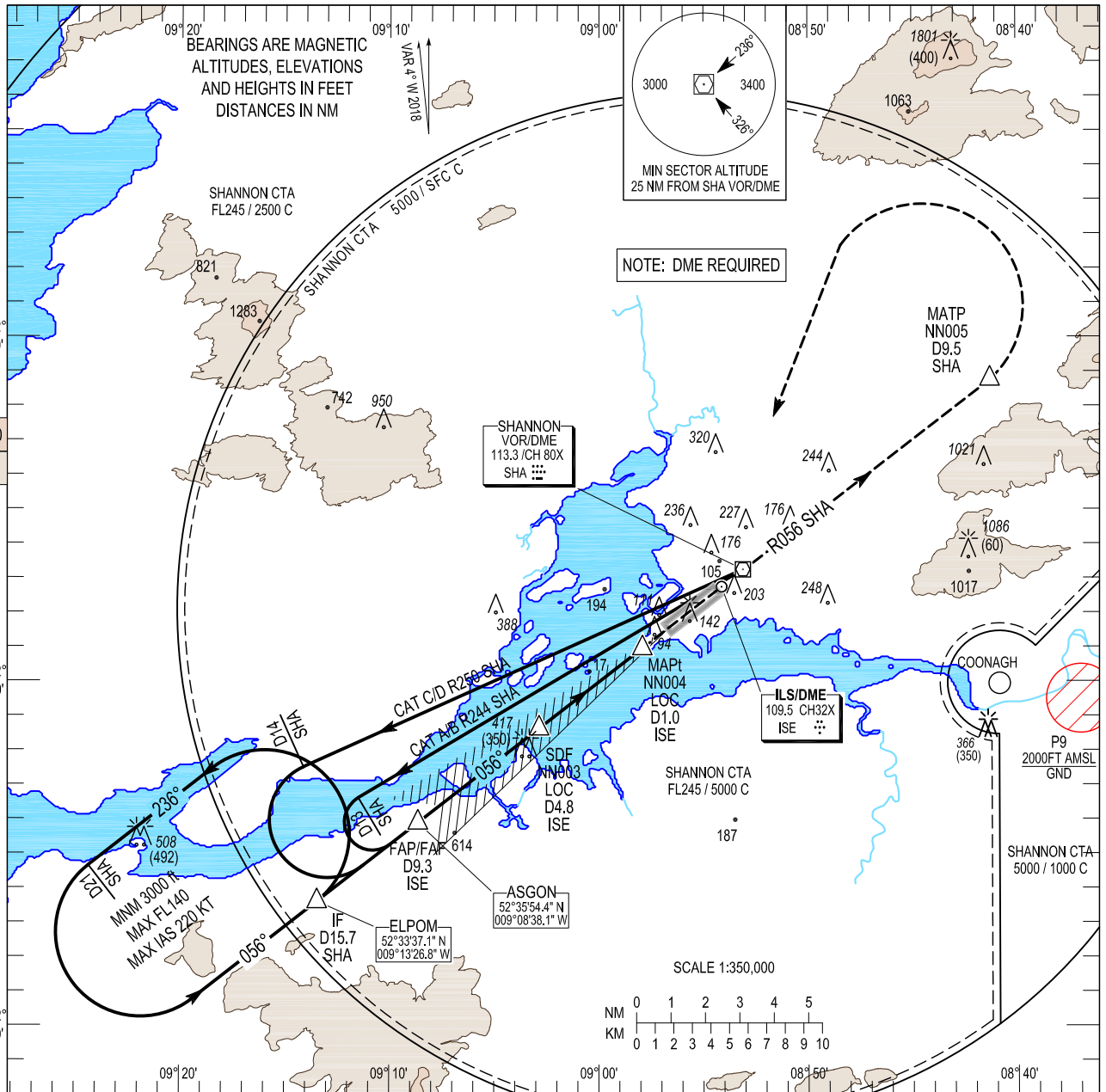
**INSTRUMENT
APPROACH
CHART- ICAO**

AERODROME ELEV 46 ft
HEIGHTS RELATED TO THR
RWY 06 - ELEV 46 ft

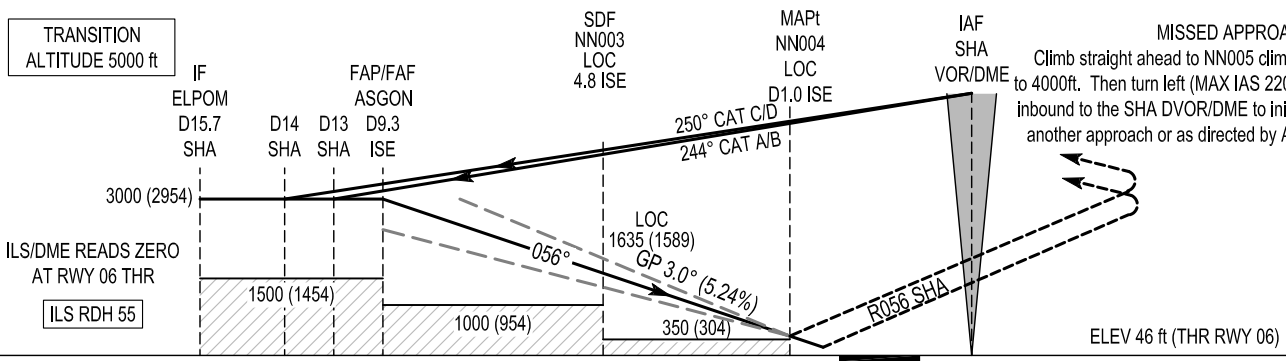
TWR 118.700
GND 121.800
APP 121.400
ATIS 130.955

**CONSULT NOTAM
FOR LATEST
INFORMATION**

SHANNON / SHANNON
ILS OR LOC RWY 06
(ACFT CAT A, B, C, D)



Change: MAG VAR, MSA, Frequencies, Holdings, Profile, Missed approach, CAT I/CA (H).



15 14 13 12 11 10 9 8 7 6 5 4 3 2 1 0 1 2 3 4 5 NM FROM THR 06

OCA (H)		A	B	C	D	Recommended Profile on Final Approach for GP INOP																
STRAIGHT - IN APPROACH	CAT I	197 (151)	204 (158)	213 (167)	222 (176)	DME ISE	9.0	8.0	7.0	6.0	5.0	4.0	3.0	2.0	1.0							
	LOC	350 (304)				ALT (HT)	2965(2919)	2650(2604)	2330(2284)	2010(1964)	1695(1649)	1375(1329)	1055(1009)	740(694)	420(374)							
VISUAL MANOEUVRING (These heights are AAL)		500 (454)	540 (494)	720 (674)	800 (754)	Descent Rate 5.24%, (3°), 318 ft/NM					Kts	80	100	120	140	160						
											ft / min	425	530	640	745	850						

06 DEC 2018

RWY 06 ILS Approach

Fix	IF ELPOM	FAP/FAF ASGON	SHA	MATP NN005	IAF SHA
Fix Coordinates	523337.1N 0091326.8W	523554.4N 0090838.1W	524315.6N 0085306.8W	524904.1N 0084044.4W	524315.6N 0085306.8W
Fix Formation Bearing °T	232.20 SHA	232.26 ISE	-	052.18	-
Fix Formation Distances	15.71 SHA	9.27 ISE	-	9.50 SHA	-

RWY 06 LOC Approach

Descent Angle:	3.00°						
Fix	IF ELPOM	FAP/FAF ASGON	SDF NN003	MAPt NN004	SHA	MATP NN005	IAF SHA
Fix Coordinates	523337.1N 0091326.8W	523554.4N 0090838.1W	523838.7N 0090251.4W	524058.4N 0085755.3W	524315.6N 0085306.8W	524904.1N 0084044.4W	524315.6N 0085306.8W
Fix Formation Bearing °T	232.20 SHA	232.26 ISE	232.26 ISE	232.26 ISE	-	052.18	-
Fix Formation Distances	15.71 SHA	9.27 ISE	4.80 ISE	1.00 ISE	-	9.50 SHA	-

Holding Identification - EINN AD 2.24-10

<i>Holding Fix</i>	<i>Latitude (N) / Longitude (W)</i>	<i>Inbound True Track (degrees)</i>	<i>Inbound Magnetic Track (degrees)</i>	<i>Maximum Indicated Airspeed (kts)</i>	<i>Minimum/ Maximum Holding Level / Altitude (FL/ft)</i>	<i>Limiting outbound distance (NM)</i>	<i>Direction of Turn</i>
ELPOM	523337.1N / 0091326.8W	051.85	056	220	3000ft / FL140	D21 SHA	L