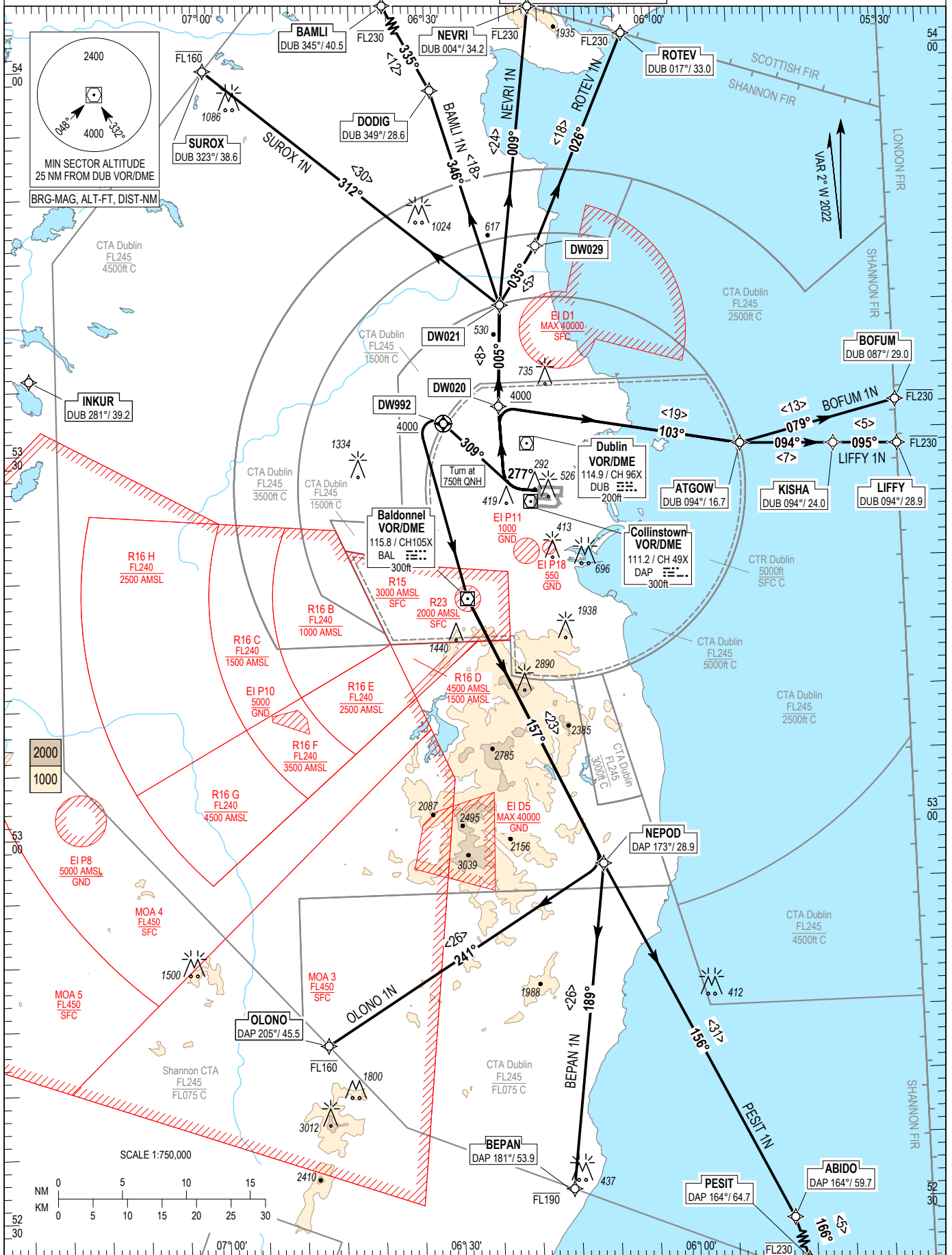


RNAV STANDARD DEPARTURE CHART
INSTRUMENT (SID) - ICAO

TRANS ALT 5000ft
TRANS LEVEL by ATC

ATIS DEP	124.530
TWR NTH	124.680
ACC Lower North	132.580
ACC Lower South	120.755

DUBLIN RWY 28R, CAT A, B
 PESIT 1N, BAMLI 1N, BEPAN 1N, BOFUM 1N, LIFFY 1N,
 NEVRI 1N, OLONO 1N, ROTEV 1N, SUROX 1N.



NOTES: 1. Climb gradient 6.6 % (400 ft/NM) (3.3% for obstacle clearance). 2. Turn above 750 ft QNH (No turns before DER). 3. Integrity check fix available from RADAR. 4. Immediately after take off contact ACC Lower North or ACC Lower South as appropriate. 5. Aircraft routing to INKUR will be given a SUROX SID and RADAR transition. 6. DME/DME or GNSS navigation required. 7. On passing 2000 ft contact ACC Lower North or ACC Lower South as appropriate. 8. For BOFUM and LIFFY MAX IAS: 290kts above FL100.

CHANGE: Verso page amended.

PESIT 1N CAT A/B SID RWY28R

PESI1N

Nav. Spec.	WPT Name	Latitude (N) / Longitude (W)	Path Term	Fly-By / Fly-Over	True track / Mag track	Distance (NM)	Upper limit / Lower limit (ft)	Speed limit (kts)	Remarks
RNAV 1	-	-	CA	-	275.3 / 277	-	- / +A750	-	-
RNAV 1	DW992	533143.9 / 0062914.6	CF	Fly-Over	307.3 / 309	-	- / +A4000	-	R288 DUB / D6.7 DUB
RNAV 1	BAL	531759.6 / 0062652.0	DF	Fly-By	-	-	-	-	Turn L
RNAV 1	NEPOD	525657.2 / 0061029.8	TF	Fly-By	154.8 / 157	23.3	-	-	Turn L
RNAV 1	ABIDO	522844.0 / 0054744.0	TF	Fly-By	153.8 / 156	31.5	-	-	-
RNAV 1	PESIT	522356.6 / 0054524.0	TF	Fly-By	163.4 / 166	5.0	-FL230 / -	-	Turn R

BAMLI 1NCAT A/B SID RWY28R

BAML1N

Nav. Spec.	WPT Name	Latitude (N) / Longitude (W)	Path Term	Fly-By / Fly-Over	True track / Mag track	Distance (NM)	Upper limit / Lower limit (ft)	Speed limit (kts)	Remarks
RNAV 1	-	-	CA	-	275.3 / 277	-	- / +A750	-	-
RNAV 1	DW020	533255.4 / 0062156.8	DF	Fly-By	-	-	- / +4000	-	Turn R
RNAV 1	DW021	534049.2 / 0062118.5	TF	Fly-By	002.8 / 005	7.9	-	-	Turn R
RNAV 1	DODIG	535746.0 / 0062934.0	TF	Fly-By	344.0 / 346	17.7	-	-	Turn L
RNAV 1	BAMLI	540828.5 / 0063904.0	TF	Fly-By	332.5 / 335	12.1	-FL230 / -	-	Turn L

BEPAN 1N CAT A/B SID RWY28R

BEPAIN

Nav. Spec.	WPT Name	Latitude (N) / Longitude (W)	Path Term	Fly-By / Fly-Over	True track / Mag track	Distance (NM)	Upper limit / Lower limit (ft)	Speed limit (kts)	Remarks
RNAV 1	-	-	CA	-	275.3 / 277	-	- / +A750	-	-
RNAV 1	DW992	533143.9 / 0062914.6	CF	Fly-Over	307.3 / 309	-	- / +A4000	-	R288 DUB / D6.7 DUB
RNAV 1	BAL	531759.6 / 0062652.0	DF	Fly-By	-	-	-	-	Turn L
RNAV 1	NEPOD	525657.2 / 0061029.8	TF	Fly-By	154.8 / 157	23.3	-	-	Turn L
RNAV 1	BEPAN	523136.2 / 0061549.5	TF	Fly-By	187.3 / 189	25.6	-FL190 / -	-	Turn R

BOFUM 1N CAT A/B SID RWY28R

BOFU1N

Nav. Spec.	WPT Name	Latitude (N) / Longitude (W)	Path Term	Fly-By / Fly-Over	True track / Mag track	Distance (NM)	Upper limit / Lower limit (ft)	Speed limit (kts)	Remarks
RNAV 1	-	-	CA	-	275.3 / 277	-	- / +A750	-	-
RNAV 1	DW020	533255.4 / 0062156.8	DF	Fly-By	-	-	- / +4000	-	Turn R
RNAV 1	ATGOW	532920.2 / 0055032.5	TF	Fly-By	100.6 / 103	19.1	-	-	Turn R
RNAV 1	BOFUM	533214.0 / 0053000.0	TF	Fly-By	076.6 / 079	12.6	-FL230 / -	290	Turn L

LIFFY 1N CAT A/B SID RWY28R

LIFF1N

Nav. Spec.	WPT Name	Latitude (N) / Longitude (W)	Path Term	Fly-By / Fly-Over	True track / Mag track	Distance (NM)	Upper limit / Lower limit (ft)	Speed limit (kts)	Remarks
RNAV 1	-	-	CA	-	275.3 / 277	-	- / +A750	-	-
RNAV 1	DW020	533255.4 / 0062156.8	DF	Fly-By	-	-	- / +4000	-	Turn R
RNAV 1	ATGOW	532920.2 / 0055032.5	TF	Fly-By	100.6 / 103	19.1	-	-	Turn R
RNAV 1	KISHA	532901.7 / 0053821.6	TF	Fly-By	092.3 / 094	7.3	-	-	Turn L
RNAV 1	LIFFY	532848.3 / 0053000.0	TF	Fly-By	092.6 / 095	5.0	-FL230 / -	290	-

NEVRI 1N CAT A/B SID RWY28R

NEVR1N

Nav. Spec.	WPT Name	Latitude (N) / Longitude (W)	Path Term	Fly-By / Fly-Over	True track / Mag track	Distance (NM)	Upper limit / Lower limit (ft)	Speed limit (kts)	Remarks
RNAV 1	-	-	CA	-	275.3 / 277	-	- / +A750	-	-
RNAV 1	DW020	533255.4 / 0062156.8	DF	Fly-By	-	-	- / +4000	-	Turn R
RNAV 1	DW021	534049.2 / 0062118.5	TF	Fly-By	002.8 / 005	7.9	-	-	Turn R
RNAV 1	NEVRI	540406.0 / 0061611.4	TF	Fly-By	007.4 / 009	23.5	-FL230 / -	-	Turn R

OLONO 1N CAT A/B SID RWY28R

OLON1N

Nav. Spec.	WPT Name	Latitude (N) / Longitude (W)	Path Term	Fly-By / Fly-Over	True track / Mag track	Distance (NM)	Upper limit / Lower limit (ft)	Speed limit (kts)	Remarks
RNAV 1	-	-	CA	-	275.3 / 277	-	- / +A750	-	-
RNAV 1	DW992	533143.9 / 0062914.6	CF	Fly-Over	307.3 / 309	-	- / +A4000	-	R288 DUB / D6.7 DUB
RNAV 1	BAL	531759.6 / 0062652.0	DF	Fly-By	-	-	-	-	Turn L
RNAV 1	NEPOD	525657.2 / 0061029.8	TF	Fly-By	154.8 / 157	23.3	-	-	Turn L
RNAV 1	OLONO	524323.1 / 0064644.4	TF	Fly-By	238.5 / 241	25.8	-FL160 / -	-	Turn R

ROTEV 1N CAT A/B SID RWY28R

ROTE1N

Nav. Spec.	WPT Name	Latitude (N) / Longitude (W)	Path Term	Fly-By / Fly-Over	True track / Mag track	Distance (NM)	Upper limit / Lower limit (ft)	Speed limit (kts)	Remarks
RNAV 1	-	-	CA	-	275.3 / 277	-	- / +A750	-	-
RNAV 1	DW020	533255.4 / 0062156.8	DF	Fly-By	-	-	- / +4000	-	Turn R
RNAV 1	DW021	534049.2 / 0062118.5	TF	Fly-By	002.8 / 005	7.9	-	-	Turn R
RNAV 1	DW029	534521.0 / 0061621.0	TF	Fly-By	033.0 / 035	5.4	-	-	Turn R
RNAV 1	ROTEV	540143.7 / 0060358.4	TF	Fly-By	024.0 / 026	18.0	-FL230 / -	-	Turn L

SUROX 1N CAT A/B SID RWY28R

SURO1N

Nav. Spec.	WPT Name	Latitude (N) / Longitude (W)	Path Term	Fly-By / Fly-Over	True track / Mag track	Distance (NM)	Upper limit / Lower limit (ft)	Speed limit (kts)	Remarks
RNAV 1	-	-	CA	-	275.3 / 277	-	- / +A750	-	-
RNAV 1	DW020	533255.4 / 0062156.8	DF	Fly-By	-	-	- / +4000	-	Turn R
RNAV 1	DW021	534049.2 / 0062118.5	TF	Fly-By	002.8 / 005	7.9	-	-	Turn R
RNAV 1	SUROX	535948.0 / 0065936.5	TF	Fly-By	310.2 / 312	29.6	-FL160 / -	-	Turn L