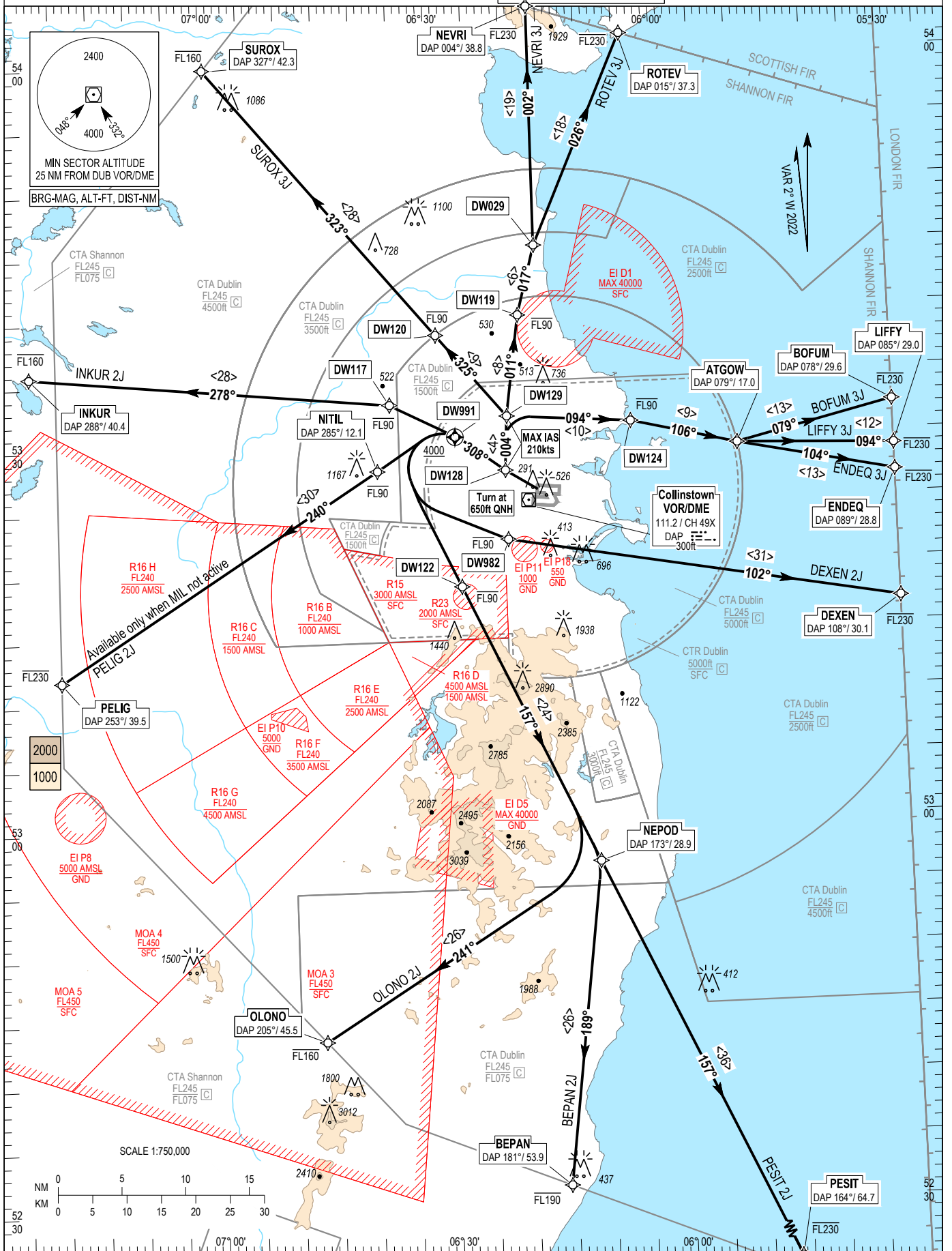


STANDARD DEPARTURE CHART
INSTRUMENT (SID) - ICAO (RNAV)

TRANS ALT 5000ft
TRANS LEVEL by ATC

ATIS DEP
TWR NTH 129.640
ACC Lower North 124.680
ACC Lower South 132.580
120.755

DUBLIN RWY 28R, CAT C, D
DEXEN 2J, LIFFY 3J, PESIT 2J, BEPAN 2J, OLONO 2J, PELIG 2J,
INKUR 2J, SUROX 3J, NEVRI 3J, ROTEV 3J, BOFUM 3J, ENDEQ 3J.



NOTES: 1. Climb gradient 9.1 % (550 ft/NM) (3.3% for obstacle clearance). 2. Turn above 650 ft QNH (No turns before DER). 3. Integrity check fix available from RADAR. 4. For BOFUM, LIFFY, ENDEQ and DEXEN MAX IAS: 290kts above FL100. 5. On passing 2000ft contact ACC Lower North or ACC Lower South as appropriate.

CHANGE: Verso page, speed at BOFUM, DEXEN, ENDEQ and LIFFY added.

BEPAN 2J CAT C/D SID RWY28R
BEPA2J

Nav. Spec.	WPT Name	Latitude (N) / Longitude (W)	Path Term	Fly-By Fly-Over	True track / Mag track	Distance (NM)	Upper limit / Lower limit	Speed limit (kts)	Remarks
RNAV1	-	-	CA	-	275.3 / 277	-	- / +A650	210	-
RNAV1	DW128	532756.6 / 0062108.2	CF	Fly-By	305.5 / 308	-	-	210	Turn R, 221° DUB / D2.6 DUB
RNAV1	DW991	533013.9 / 0062632.6	CF	Fly-Over	305.4 / 308	-	- / +A4000	-	R275° DUB / D4.9 DUB
RNAV1	DW122	531846.8 / 0062718.3	DF	Fly-By	-	-	-FL090 / -	-	Turn L
RNAV1	NEPOD	525657.2 / 0061029.8	TF	Fly-By	155.0 / 157	24.1	-	-	-
RNAV1	BEPAN	523136.2 / 0061549.5	TF	Fly-By	187.3 / 189	25.6	-FL190 / -	-	Turn R

BOFUM 3J CAT C/D SID RWY28R
BOFU3J

Nav. Spec.	WPT Name	Latitude (N) / Longitude (W)	Path Term	Fly-By Fly-Over	True track / Mag track	Distance (NM)	Upper limit / Lower limit	Speed limit (kts)	Remarks
RNAV1	-	-	CA	-	275.3 / 277	-	- / +A650	210	-
RNAV1	DW128	532756.6 / 0062108.2	CF	Fly-By	305.5 / 308	-	-	210	Turn R, 221° DUB / D2.6 DUB
RNAV1	DW129	533136.2 / 0062055.7	TF	Fly-By	001.9 / 004	3.7	-	210	Turn R
RNAV1	DW124	533120.3 / 0060426.0	TF	Fly-By	091.4 / 094	9.8	-FL090 / -	-	Turn R
RNAV1	ATGOW	532920.2 / 0055032.5	TF	Fly-By	103.5 / 106	8.5	-	-	Turn R
RNAV1	BOFUM	533214.0 / 0053000.0	TF	Fly-By	076.6 / 079	12.6	-FL230 / -	290	Turn L

DEXEN 2J CAT C/D SID RWY28R
DEXE2J

Nav. Spec.	WPT Name	Latitude (N) / Longitude (W)	Path Term	Fly-By Fly-Over	True track / Mag track	Distance (NM)	Upper limit / Lower limit	Speed limit (kts)	Remarks
RNAV1	-	-	CA	-	275.3 / 277	-	- / +A650	210	-
RNAV1	DW128	532756.6 / 0062108.2	CF	Fly-By	305.5 / 308	-	-	210	Turn R, 221° DUB / D2.6 DUB
RNAV1	DW991	533013.9 / 0062632.6	CF	Fly-Over	305.4 / 308	-	- / +A4000	-	R275° DUB / D4.9 DUB
RNAV1	DW982	532223.0 / 0062101.5	DF	Fly-By	-	-	-FL090 / -	-	Turn L
RNAV1	DEXEN	531649.4 / 0053000.0	TF	Fly-By	100.0 / 102	31.1	-FL230 / -	290	-

ENDEQ 3J CAT C/D SID RWY28R
ENDE3J

Nav. Spec.	WPT Name	Latitude (N) / Longitude (W)	Path Term	Fly-By Fly-Over	True track / Mag track	Distance (NM)	Upper limit / Lower limit	Speed limit (kts)	Remarks
RNAV1	-	-	CA	-	275.3 / 277	-	- / +A650	210	-
RNAV1	DW128	532756.6 / 0062108.2	CF	Fly-By	305.5 / 308	-	-	210	Turn R, 221° DUB / D2.6 DUB
RNAV1	DW129	533136.2 / 0062055.7	TF	Fly-By	001.9 / 004	3.7	-	210	Turn R
RNAV1	DW124	533120.3 / 0060426.0	TF	Fly-By	091.4 / 094	9.8	-FL090 / -	-	Turn R
RNAV1	ATGOW	532920.2 / 0055032.5	TF	Fly-By	103.5 / 106	8.5	-	-	Turn R
RNAV1	ENDEQ	532644.4 / 0053000.0	TF	Fly-By	101.8 / 104	12.5	-FL230 / -	290	-

INKUR 2J CAT C/D SID RWY28R
INKU2J

Nav. Spec.	WPT Name	Latitude (N) / Longitude (W)	Path Term	Fly-By Fly-Over	True track / Mag track	Distance (NM)	Upper limit / Lower limit	Speed limit (kts)	Remarks
RNAV1	-	-	CA	-	275.3 / 277	-	- / +A650	210	-
RNAV1	DW128	532756.6 / 0062108.2	CF	Fly-By	305.5 / 308	-	-	210	Turn R, 221° DUB / D2.6 DUB
RNAV1	DW991	533013.9 / 0062632.6	CF	Fly-Over	305.4 / 308	-	- / +A4000	-	R275° DUB / D4.9 DUB
RNAV1	DW117	533310.5 / 0063604.4	DF	Fly-By	-	-	-FL090 / -	-	Turn L
RNAV1	INKUR	533551.3 / 0072328.6	TF	Fly-By	275.7 / 278	28.4	-FL160 / -	-	Turn L

LIFY 3J CAT C/D SID RWY28R
LIFY3J

Nav. Spec.	WPT Name	Latitude (N) / Longitude (W)	Path Term	Fly-By Fly-Over	True track / Mag track	Distance (NM)	Upper limit / Lower limit (ft)	Speed limit (kts)	Remarks
RNAV1	-	-	CA	-	275.3 / 277	-	- / +A650	210	-
RNAV1	DW128	532756.6 / 0062108.2	CF	Fly-By	305.5 / 308	-	-	210	Turn R, 221° DUB / D2.6 DUB
RNAV1	DW129	533136.2 / 0062055.7	TF	Fly-By	001.9 / 004	3.7	-	210	Turn R
RNAV1	DW124	533120.3 / 0060426.0	TF	Fly-By	091.4 / 094	9.8	-FL090 / -	-	Turn R
RNAV1	ATGOW	532920.2 / 0055032.5	TF	Fly-By	103.5 / 106	8.5	-	-	Turn R
RNAV1	LIFY	532848.3 / 0053000.0	TF	Fly-By	092.3 / 094	12.3	-FL230 / -	290	Turn L

NEVRI 3J CAT C/D SID RWY28R

NEVR3J

Nav. Spec.	WPT Name	Latitude (N) / Longitude (W)	Path Term	Fly-By Fly-Over	True track / Mag track	Distance (NM)	Upper limit / Lower limit	Speed limit (kts)	Remarks
RNAV1	-	-	CA	-	275.3 / 277	-	- / +A650	210	-
RNAV1	DW128	532756.6 / 0062108.2	CF	Fly-By	305.5 / 308	-	-	210	Turn R, 221° DUB / D2.6 DUB
RNAV1	DW129	533136.2 / 0062055.7	TF	Fly-By	001.9 / 004	3.7	-	210	Turn R
RNAV1	DW119	533955.8 / 0061847.9	TF	Fly-By	008.6 / 011	8.4	-FL090 / -	-	Turn R
RNAV1	DW029	534521.0 / 0061621.0	TF	Fly-By	015.0 / 017	5.6	-	-	Turn R
RNAV1	NEVRI	540406.0 / 0061611.4	TF	Fly-By	000.3 / 002	18.8	-FL230 / -	-	Turn L

OLONO 2J CAT C/D SID RWY28R

OLON2J

Nav. Spec.	WPT Name	Latitude (N) / Longitude (W)	Path Term	Fly-By Fly-Over	True track / Mag track	Distance (NM)	Upper limit / Lower limit	Speed limit (kts)	Remarks
RNAV1	-	-	CA	-	275.3 / 277	-	- / +A650	210	-
RNAV1	DW128	532756.6 / 0062108.2	CF	Fly-By	305.5 / 308	-	-	210	Turn R, 221° DUB / D2.6 DUB
RNAV1	DW991	533013.9 / 0062632.6	CF	Fly-Over	305.4 / 308	-	- / +A4000	-	R275° DUB / D4.9 DUB
RNAV1	DW122	531846.8 / 0062718.3	DF	Fly-By	-	-	-FL090 / -	-	Turn L
RNAV1	NEPOD	525657.2 / 0061029.8	TF	Fly-By	155.0 / 157	24.1	-	-	-
RNAV1	OLONO	524323.1 / 0064644.4	TF	Fly-By	238.5 / 241	25.8	-FL160 / -	-	Turn R

PELIG 2J CAT C/D SID RWY28R

PELI2J

Nav. Spec.	WPT Name	Latitude (N) / Longitude (W)	Path Term	Fly-By Fly-Over	True track / Mag track	Distance (NM)	Upper limit / Lower limit	Speed limit (kts)	Remarks
RNAV1	-	-	CA	-	275.3 / 277	-	- / +A650	210	-
RNAV1	DW128	532756.6 / 0062108.2	CF	Fly-By	305.5 / 308	-	-	210	Turn R, 221° DUB / D2.6 DUB
RNAV1	DW991	533013.9 / 0062632.6	CF	Fly-Over	305.4 / 308	-	- / +A4000	-	R275° DUB / D4.9 DUB
RNAV1	NITIL	532800.0 / 0063755.0	DF	Fly-By	-	-	-FL090 / -	-	Turn L
RNAV1	PELIG	531158.5 / 0072000.0	TF	Fly-By	237.8 / 240	29.9	-FL230 / -	-	-

PESIT 2J CAT C/D SID RWY28R

PESI2J

Nav. Spec.	WPT Name	Latitude (N) / Longitude (W)	Path Term	Fly-By Fly-Over	True track / Mag track	Distance (NM)	Upper limit / Lower limit	Speed limit (kts)	Remarks
RNAV1	-	-	CA	-	275.3 / 277	-	- / +A650	210	-
RNAV1	DW128	532756.6 / 0062108.2	CF	Fly-By	305.5 / 308	-	-	210	Turn R, 221° DUB / D2.6 DUB
RNAV1	DW991	533013.9 / 0062632.6	CF	Fly-Over	305.4 / 308	-	- / +A4000	-	R275° DUB / D4.9 DUB
RNAV1	DW122	531846.8 / 0062718.3	DF	Fly-By	-	-	-FL090 / -	-	Turn L
RNAV1	NEPOD	525657.2 / 0061029.8	TF	Fly-By	155.0 / 157	24.1	-	-	-
RNAV1	PESIT	522356.6 / 0054524.0	TF	Fly-By	155.0 / 157	36.4	-FL230 / -	-	-

ROTEV 3J CAT C/D SID RWY28R

ROTE3J

Nav. Spec.	WPT Name	Latitude (N) / Longitude (W)	Path Term	Fly-By Fly-Over	True track / Mag track	Distance (NM)	Upper limit / Lower limit	Speed limit (kts)	Remarks
RNAV1	-	-	CA	-	275.3 / 277	-	- / +A650	210	-
RNAV1	DW128	532756.6 / 0062108.2	CF	Fly-By	305.5 / 308	-	-	210	Turn R, 221° DUB / D2.6 DUB
RNAV1	DW129	533136.2 / 0062055.7	TF	Fly-By	001.9 / 004	3.7	-	210	Turn R
RNAV1	DW119	533955.8 / 0061847.9	TF	Fly-By	008.6 / 011	8.4	-FL090 / -	-	Turn R
RNAV1	DW029	534521.0 / 0061621.0	TF	Fly-By	015.0 / 017	5.6	-	-	Turn R
RNAV1	ROTEV	540143.7 / 0060358.4	TF	Fly-By	024.0 / 026	18.0	-FL230 / -	-	Turn R

SUROX 3J CAT C/D SID RWY28R

SURO3J

Nav. Spec.	WPT Name	Latitude (N) / Longitude (W)	Path Term	Fly-By Fly-Over	True track / Mag track	Distance (NM)	Upper limit / Lower limit	Speed limit (kts)	Remarks
RNAV1	-	-	CA	-	275.3 / 277	-	- / +A650	210	-
RNAV1	DW128	532756.6 / 0062108.2	CF	Fly-By	305.5 / 308	-	-	210	Turn R, 221° DUB / D2.6 DUB
RNAV1	DW129	533136.2 / 0062055.7	TF	Fly-By	001.9 / 004	3.7	-	210	Turn R
RNAV1	DW120	533832.6 / 0062944.0	TF	Fly-By	323.0 / 325	8.7	-FL090 / -	-	Turn L
RNAV1	SUROX	535948.0 / 0065936.5	TF	Fly-By	320.5 / 323	27.7	-FL160 / -	-	Turn R