

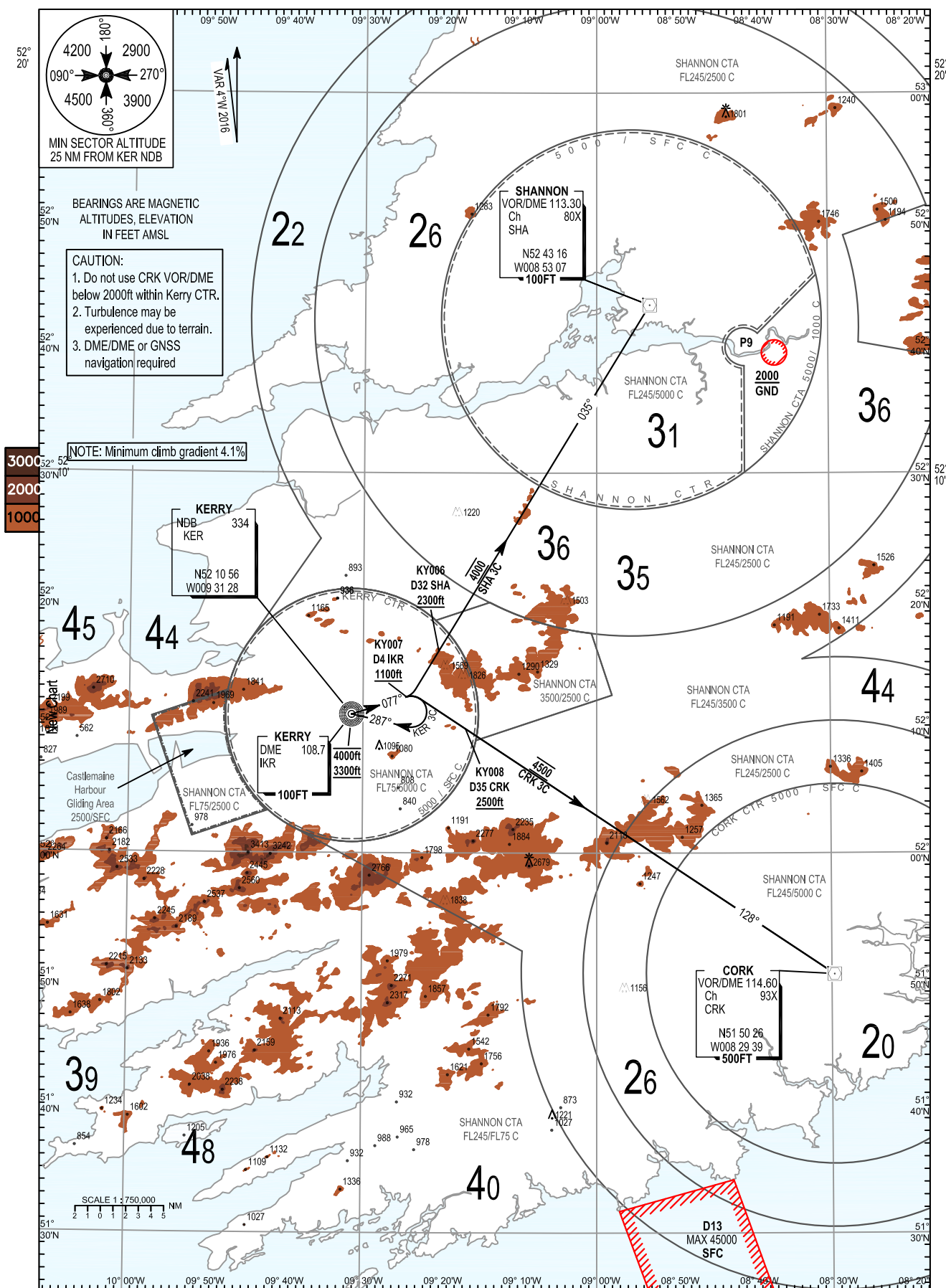
AIP IRELAND
STANDARD DEPARTURE CHART
INSTRUMENT (SID) ICAO

TRANS ALT 5000FT
TRANS LEVEL by ATC

Kerry TWR	123.325
Kerry GND	121.600
Shannon Control	124.700
ATIS	118.025

KERRY RWY 08
CAT A,B

SHA 3C, CRK 3C, KER 3C



CHANGE: Caution Note 3 added

SHA 3C CAT A/B SID RWY 08

SHA3C

Navigation Performance	Path Terminator	WPT Name	Latitude (N), Longitude (W)	Fly-By or Fly-over	Distance (NM)	True Track/ Magnetic Track	Upper limit/ Lower Limit	Speed Limit (kts)	Remarks
RNAV1	CF	RWY08	-	-	-	072.2/ 077	-	-	-
RNAV1	CF	KY007	521218.9/ 0092426.1	Fly-Over	4.0	072.2/ 077	-4000/ +1100	-	-
RNAV1	CF	KY006	521556.8/ 0092017.3	Fly-By	3.6	031.1/ 035	-4000/ +2300	-	L
RNAV1	TF	SHA	524315.6/ 0085306.8	Fly-By	32.0	031.1/ 035	4000	-	-

CRK 3C CAT A/B SID RWY 08

CRK3C

Navigation Performance	Path Terminator	WPT Name	Latitude (N), Longitude (W)	Fly-By or Fly-over	Distance (NM)	True Track/ Magnetic Track	Upper limit/ Lower Limit	Speed Limit (kts)	Remarks
RNAV1	CF	RWY08	-	-	-	072.2/ 077	-	-	-
RNAV1	CF	KY007	521218.9/ 0092426.1	Fly-Over	4.0	072.2/ 077	-4500/ +1100	-	-
RNAV1	CF	KY008	520947.4/ 0091648.9	Fly-By	4.3	123.2/ 128	-4500/ +2500	-	R
RNAV1	TF	CRK	515026.2/ 0082939.4	Fly-By	35.0	123.3/ 128	4500	-	-

KER 3C CAT A/B SID RWY 08

KER3C

Navigation Performance	Path Terminator	WPT Name	Latitude (N), Longitude (W)	Fly-By or Fly-over	Distance (NM)	True Track/ Magnetic Track	Upper limit/ Lower Limit	Speed Limit (kts)	Remarks
RNAV1	CF	RWY08	-	-	-	072.2/ 077	-	-	-
RNAV1	CF	KY007	521218.9/ 0092426.1	Fly-Over	4.0	072.2/ 077	-4000/ +1100	-	-
RNAV1	CF	KER	521055.8/ 0093128.2	Fly-By	4.5	282.8/ 287	-4000/ +3300	-	R