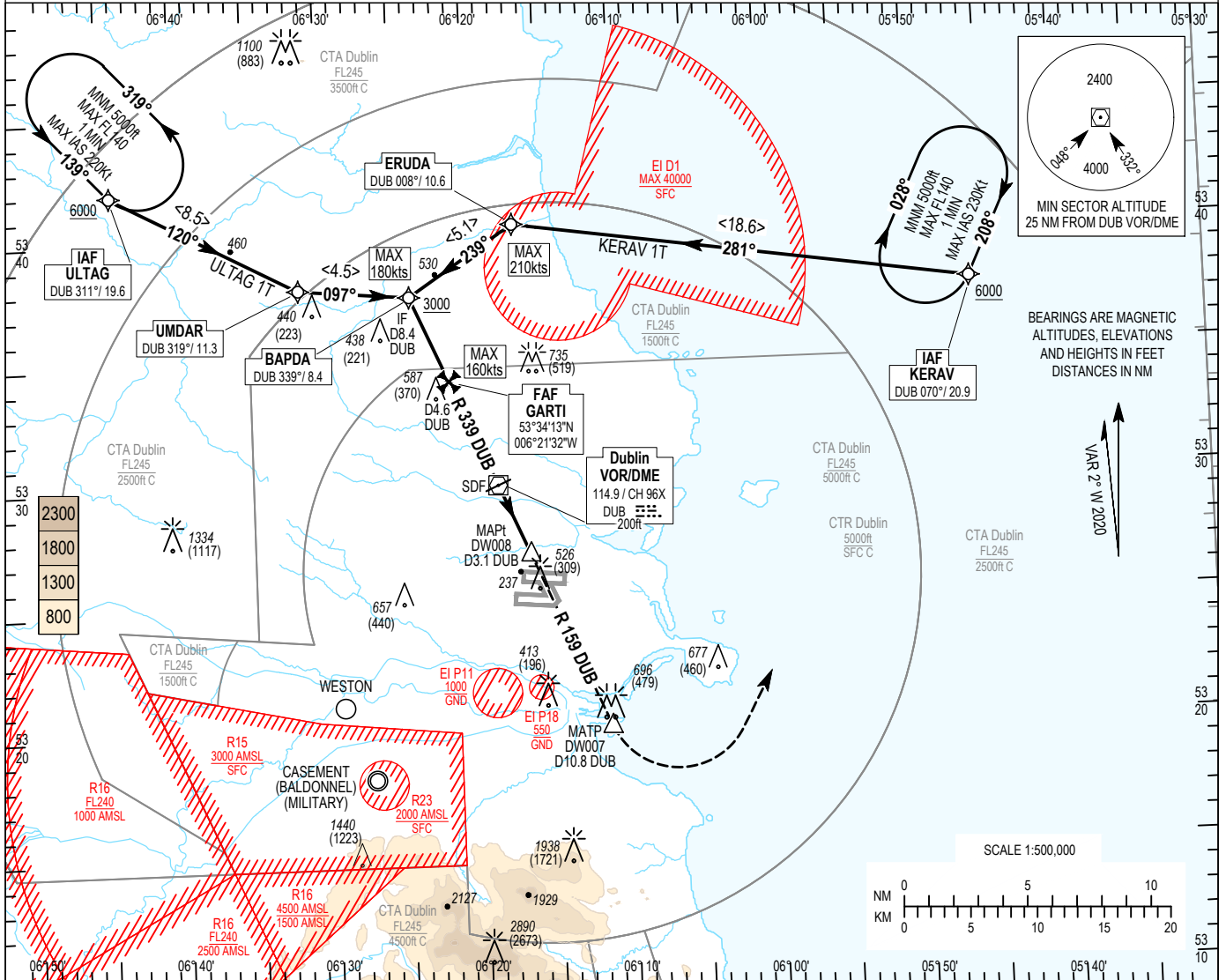


INSTRUMENT
APPROACH
CHART- ICAO

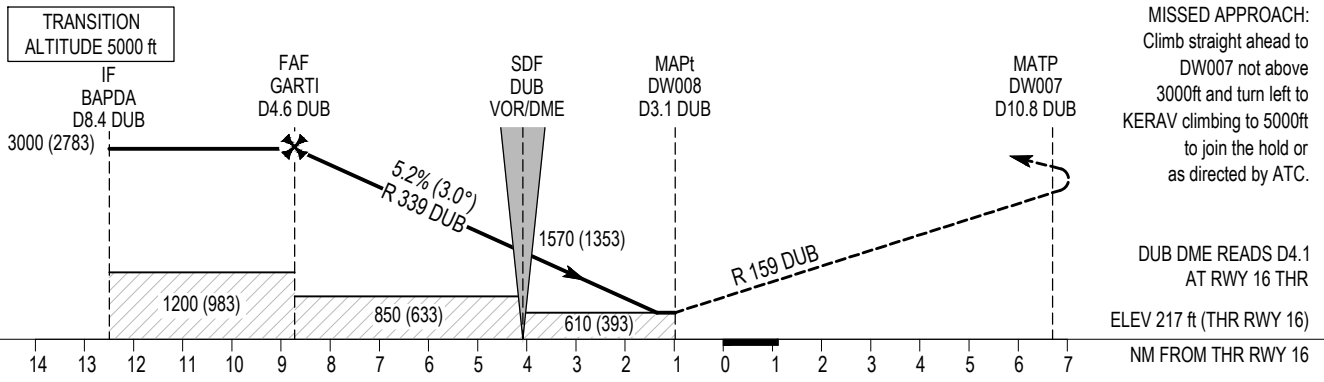
AERODROME ELEV 242 ft
HEIGHTS RELATED TO
THR RWY 16 - ELEV 217 ft

TWR	118.600
FINALS	119.930
GND	121.800
ATIS	124.530
APP	121.100

DUBLIN/DUBLIN
VOR RWY 16
(ACFT CAT A, B, C, D)



CHANGE: MAG VAR, Obstacles, Recommended Profile on Final approach, Chart Numbering, Frequencies and Notes



OCA (H)	A	B	C	D
	610 (393)			
Straight-in Approach	610 (393)			
Visual Manoeuvring (Heights AAL)	830 (588)		1100 (858)	

NOTE:

1. DME required
2. Timing not authorised for determining MAPt.
3. DME/DME or GNSS navigation required for initial approach.
4. Non RNAV aircraft may expect radar vectors from IAF to IF.

Recommended Profile on Final Approach									
DIST DME DUB (NM)	4	3	2	1	0	1	2	3	
ALT / HT (ft)	2850 (2633)	2530 (2313)	2210 (1993)	1890 (1673)	1570 (1353)	1250 (1033)	930 (713)	620 (403)	
Ground Speed	kts			80	100	110	120	140	160
Descent rate gradient - 5.2% (3.0°) 318 ft/NM	ft / min			430	530	580	640	740	850

KERAV 1T RWY16 VOR

Navigational performance	Path descriptor	WPT Name	Latitude (N) / Longitude (W)	Fly-By or Fly-Over	Distance (nm)	True track / Magnetic track	Upper limit / Lower limit	Speed limit (kts)	Remarks
RNAV 1	IF	KERAV	533742.7 / 0054557.3	Fly-By	-	-	- / A6000	-	IAF
RNAV 1	TF	ERUDA	534029.0 / 0061655.0	Fly-By	18.6	278.8 / 281	-	210	-
RNAV 1	TF	BAPDA	533740.0 / 0062403.7	Fly-By	5.1	236.5 / 239	- / A3000	180	IF

ULTAG 1T RWY16 VOR

Navigational performance	Path descriptor	WPT Name	Latitude (N) / Longitude (W)	Fly-By or Fly-Over	Distance (nm)	True track / Magnetic track	Upper limit / Lower limit	Speed limit (kts)	Remarks
RNAV 1	IF	ULTAG	534201.0 / 0064417.2	Fly-By	-	-	- / A6000	-	IAF
RNAV 1	TF	UMDAR	533803.3 / 0063135.5	Fly-By	8.5	117.6 / 120	-	210	-
RNAV 1	TF	BAPDA	533740.0 / 0062403.7	Fly-By	4.5	094.9 / 097	- / A3000	180	IF

RWY 16 VOR Approach

Descent Angle:	5.24% (3.00°)				
Fix	BAPDA D8.4 DUB	GARTI D4.6 DUB	SDF DUB	MAPt (DW008) D3.1 DUB	MATP (DW007) D10.8 DUB
Fix Coordinates	533740.0N 0062403.7W	533412.8N 0062132.1W	532957.8N 0061825.6W	532707.3N 0061622.2W	532003.5N 0061115.7W
Fix Formation Bearing °T	336.50 DUB	336.48 DUB	-	156.63 DUB	156.58 DUB
Fix Formation Distances	8.42 DUB	4.64 DUB	-	3.10 DUB	10.81 DUB

Holding Identification - EIDW AD 2.24-40.1

Holding Fix	Latitude (N) / Longitude (W)	Inbound True Track (degrees)	Inbound Magnetic Track (degrees)	Maximum Indicated Airspeed (kts)	Minimum/ Maximum Holding Level / Altitude (FL/ft)	Limiting outbound time (min) / distance (NM)	Direction of Turn
KERAV	533742.7N / 0054557.3W	205.6	208	230	A5000 / FL140	1 min	R
ULTAG	534201.0N / 0064417.2W	136.6	139	220	A5000 / FL140	1 min	L