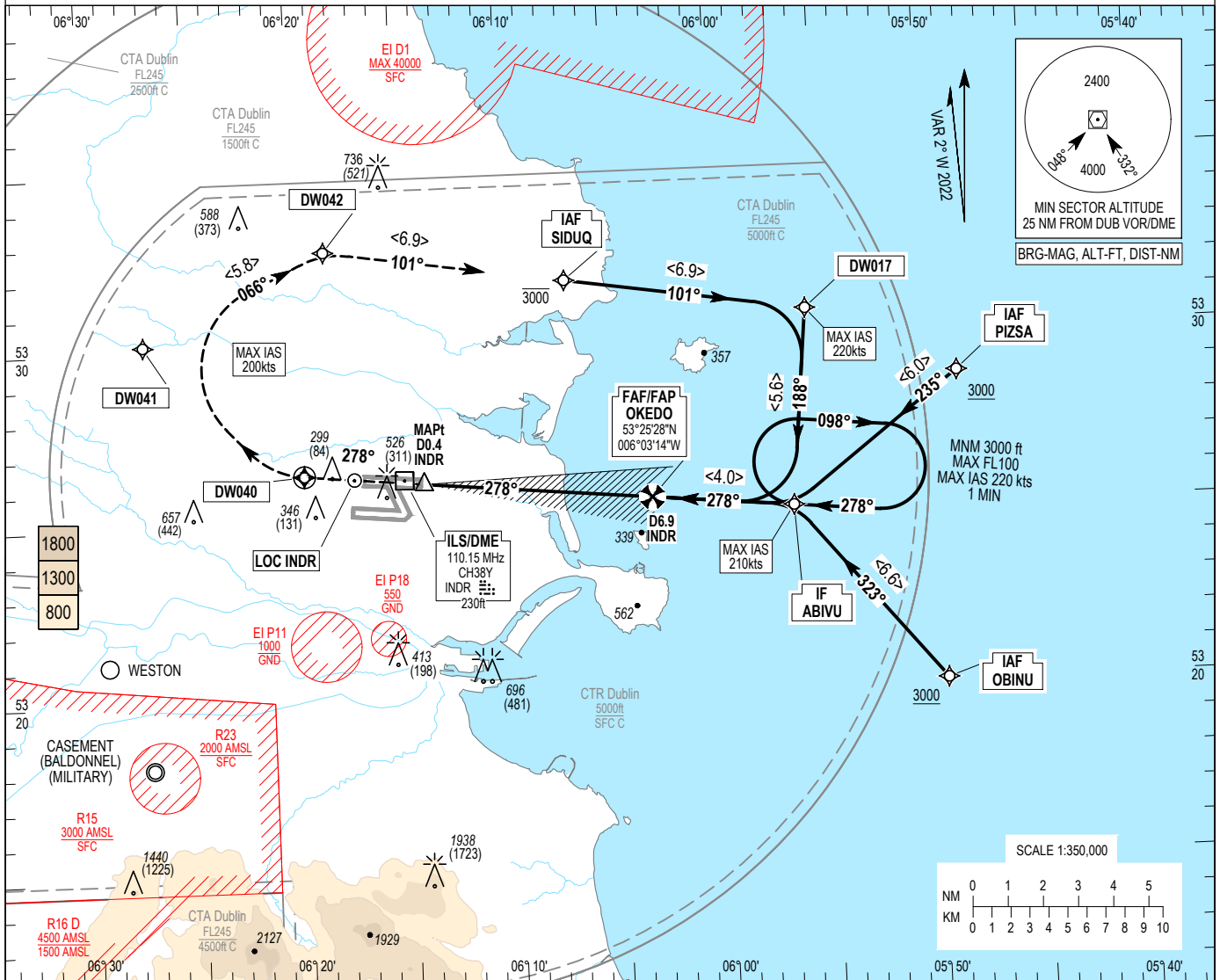


**INSTRUMENT  
APPROACH  
CHART- ICAO**

**AERODROME ELEV 243 ft**  
HEIGHTS RELATED TO  
THR RWY 28R - ELEV 215 ft

ATIS ARR	124.530
APP	121.100
FINALS	119.930
TWR NTH	124.680
GND NTH	125.855

**DUBLIN/DUBLIN**  
ILS CAT I and II or LOC RWY 28R  
(ACFT CAT A, B, C, D)

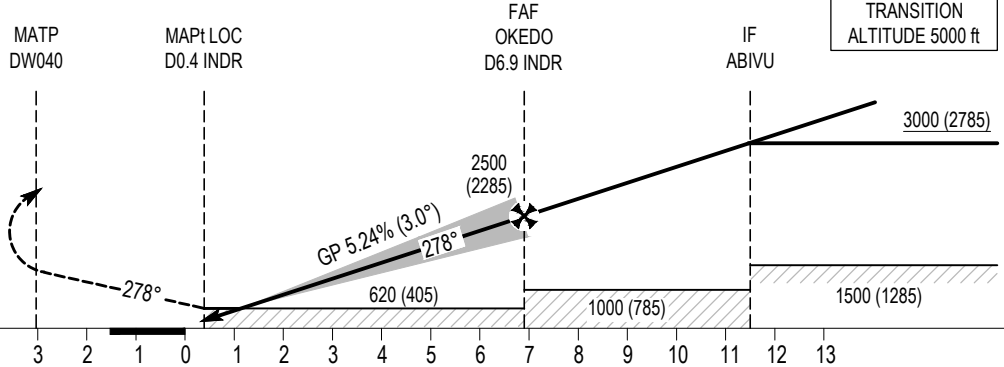


**MISSED APPROACH:**  
Climb straight ahead to DW040  
turn right to DW041, DW042  
(MAX IAS 200 kts) then proceed  
not above 3000ft to SIDUQ to  
initiate another approach or as  
instructed by ATC.

**RDH 51**

ELEV 215 ft (THR RWY 28R)

NM FROM THR RWY 28R



OCA (H)		A	B	C	D
Straight-in Approach	CAT I	349 (134)	357 (142)	367 (152)	377 (162)
	CAT II	262 (47)	273 (58)	286 (71)	301 (86)
	LOC	620 (405)			
Visual Manoeuvring (Heights AAL)		830 (588)		1100 (858)	

- NOTE:**
1. DME required or vectoring to final approach for ILS.
  2. Timing not authorised for determining the MAPt.
  3. RNAV1 required for initial and missed approach.
  4. ILS/DME INDR reads zero at THR RWY 28R.

Recommended Profile on Final Approach						
DIST from THR (NM)	2	3	4	5	6	
ALT / HT (ft)	900 (685)	1220 (1005)	1540 (1325)	1855 (1640)	2175 (1960)	
Ground Speed	kts		80	100	110	120
Descent rate gradient - 5.24% (3°) 318 ft/NM	ft / min		430	540	590	640
			140	160	750	850

CHANGE: New chart.

**Dublin INITIAL APP ILS RWY 28R via SIDUQ**

Nav. Spec.	WPT Name	Latitude (N)/ Longitude (W)	Path Term	Fly-By Fly-over	True track / Mag track	Distance (NM)	Upper limit / Lower limit	Speed Limit (kts)	Remarks
RNP APCH	SIDUQ	533142.4 / 0060703.6	IF	-	-	-	- / +A3000	-	-
RNP APCH	DW017	533039.7 / 0055538.6	TF	Fly-By	098.7 / 101	6.9	-	220	-
RNP APCH	ABIVU	532505.7 / 0055631.5	TF	Fly-By	185.4 / 188	5.6	-	210	Turn R

**Dublin INITIAL APP ILS RWY 28R via PIZSA**

Nav. Spec.	WPT Name	Latitude (N)/ Longitude (W)	Path Term	Fly-By Fly-over	True track / Mag track	Distance (NM)	Upper limit / Lower limit	Speed Limit (kts)	Remarks
RNP APCH	PIZSA	532844.3 / 0054933.6	IF	-	-	-	- / +A3000	-	-
RNP APCH	ABIVU	532505.7 / 0055631.5	TF	Fly-By	232.6 / 235	6.0	-	210	-

**Dublin INITIAL APP ILS RWY 28R via OBINU**

Nav. Spec.	WPT Name	Latitude (N)/ Longitude (W)	Path Term	Fly-By Fly-over	True track / Mag track	Distance (NM)	Upper limit / Lower limit	Speed Limit (kts)	Remarks
RNP APCH	OBINU	532001.7 / 0054931.2	IF	-	-	-	- / +A3000	-	-
RNP APCH	ABIVU	532505.7 / 0055631.5	TF	Fly-By	320.5 / 323	6.6	-	210	-

**Dublin ILS CAT I and II or LOC Approach RWY 28R**

Descent Angle:	3.00°	
Fix	FAF (D6.9 THR – OKEDO)	MAPt (D0.4 THR)
Fix Coordinates	532528.2N / 0060314.0W	532604.6 N / 0061402.9 W
Fix Formation Bearing (°T)	095.25 LOC 28R	095.24 LOC 28R
Fix Formation Distances	6.89 THR	0.39 THR

**Dublin MISSED APP ILS RWY 28R**

Nav. Spec.	WPT Name	Latitude (N)/ Longitude (W)	Path Term	Fly-By Fly-over	True track / Mag track	Distance (NM)	Upper limit / Lower limit	Speed Limit (kts)	Remarks
RNP APCH	DW040	532623.8 / 0061944.4	CF	Fly-Over	275.4 / 278	-	-	200	R318 DAP / D1.4 DAP
RNP APCH	DW041	533011.9 / 0062712.8	DF	Fly-By	-	-	-A3000 / -	200	Turn R
RNP APCH	DW042	533244.1 / 0061829.1	TF	Fly-By	063.9 / 066	5.8	-A3000 / -	200	Turn R
RNP APCH	SIDUQ	533142.4 / 0060703.6	TF	Fly-By	098.5 / 101	6.9	-A3000 / -	-	Turn R

**Hold Identification – ABIVU**

Holding Fix	Latitude (N) / Longitude (W)	Inbound True Track (degrees)	Inbound Mag Track (degrees)	Maximum Indicated Airspeed (kts)	Minimum Holding Altitude/ Level (FL/ft)	Maximum Holding Altitude/ Level (FL/ft)	Outbound time (min)	Direction of Turn
ABIVU	532505.7 / 0055631.5	275.4	278	220	+A3000	-FL100	1	R