

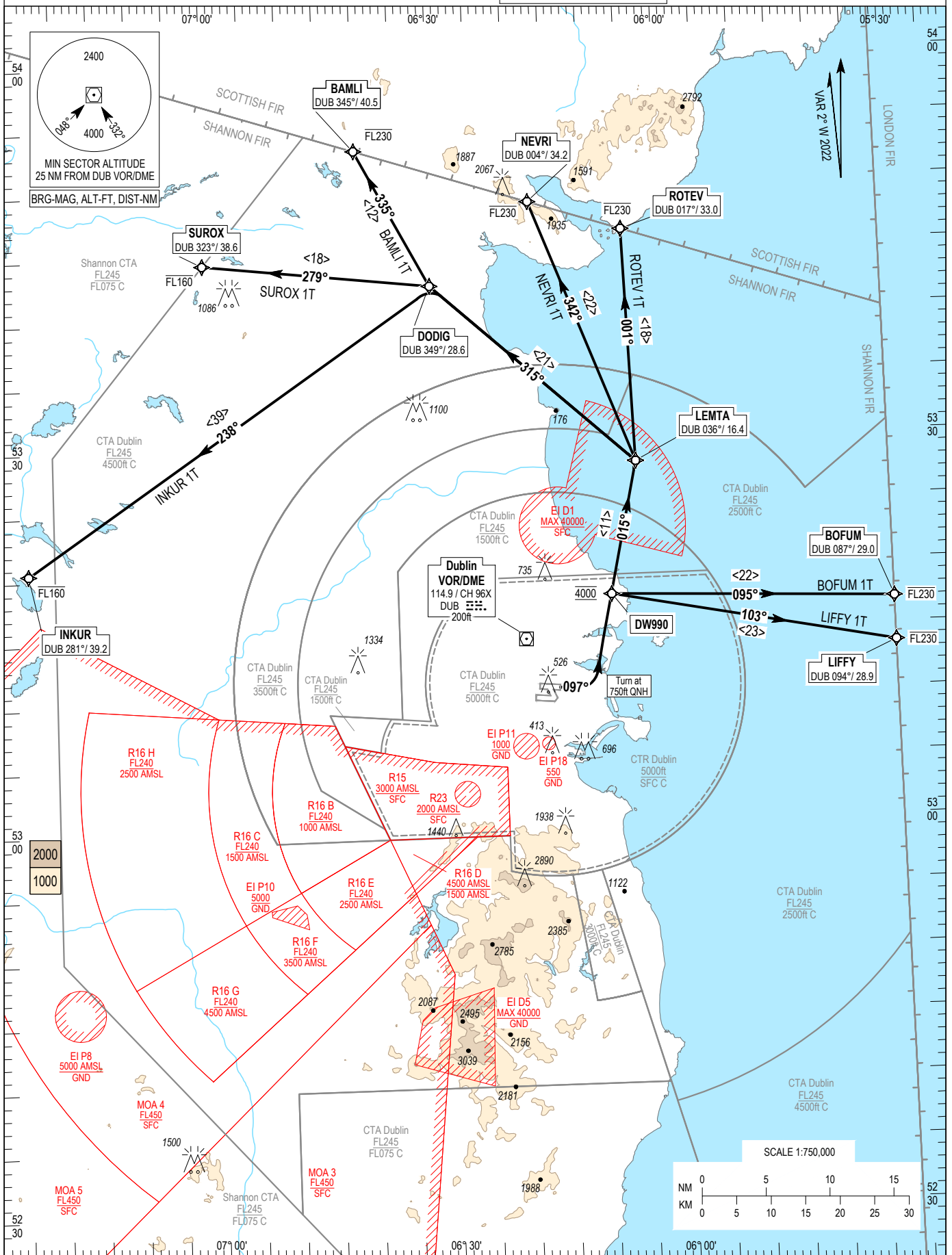
RNAV STANDARD DEPARTURE CHART
INSTRUMENT (SID) - ICAO

TRANS ALT 5000ft
TRANS LEVEL by ATC

ATIS DEP	129.640
TWR NTH	124.680
DEP North	127.865
DEP South	123.990

DUBLIN RWY 10L, CAT A, B

BOFUM 1T, LIFFY 1T, INKUR 1T,
SUROX 1T, NEVRI 1T, ROTEV 1T.



NOTES: 1. Climb gradient 6.6% (400 ft/NM) (3.3% for obstacle clearance). 2. Turn above 750 ft QNH (No turns before DER) 3. Integrity check fix available from RADAR. 4. Immediately after take off contact Dublin Departure North or South as appropriate. 5. Close-in obstacles (poles and streetlights) to the right of departure track exist.

CHANGE: New Chart.

BAMLI 1T CAT A/B SID RWY10L

BAML1T

Nav. Spec.	WPT Name	Latitude (N)/ Longitude (W)	Path Term	Fly-By Fly-over	True track / Mag track	Distance (NM)	Upper limit / Lower limit (ft)	Speed Limit (kts)	Remarks
RNAV1	-	-	CA	-	095.3 / 097	-	- / +A750	-	-
RNAV1	DW990	533314.9 / 0060701.7	DF	Fly-By	-	-	A4000 / A4000	-	Turn L
RNAV1	LEMTA	534334.3 / 0060311.6	TF	Fly-By	012.4 / 015	10.6	-	-	-
RNAV1	DODIG	535746.0 / 0062934.0	TF	Fly-By	312.5 / 315	21.1	-	-	Turn L
RNAV1	BAMLI	540828.5 / 0063904.0	TF	Fly-By	332.5 / 335	12.1	- FL230 / -	-	Turn R

BOFUM 1T CAT A/B SID RWY10L

BOFU1T

Nav. Spec.	WPT Name	Latitude (N)/ Longitude (W)	Path Term	Fly-By Fly-over	True track / Mag track	Distance (NM)	Upper limit / Lower limit (ft)	Speed Limit (kts)	Remarks
RNAV1	-	-	CA	-	095.3 / 097	-	- / +A750	-	-
RNAV1	DW990	533314.9 / 0060701.7	DF	Fly-By	-	-	A4000 / A4000	-	Turn L
RNAV1	BOFUM	533214.0 / 0053000.0	TF	Fly-By	092.4 / 095	22.1	- FL230 / -	-	Turn R

LIFFY 1T CAT A/B SID RWY10L

LIFF1T

Nav. Spec.	WPT Name	Latitude (N)/ Longitude (W)	Path Term	Fly-By Fly-over	True track / Mag track	Distance (NM)	Upper limit / Lower limit (ft)	Speed Limit (kts)	Remarks
RNAV1	-	-	CA	-	095.3 / 097	-	- / +A750	-	-
RNAV1	DW990	533314.9 / 0060701.7	DF	Fly-By	-	-	A4000 / A4000	-	Turn L
RNAV1	LIFFY	532848.3 / 0053000.0	TF	Fly-By	101.1 / 103	22.5	- FL230 / -	-	Turn R

INKUR 1T CAT A/B SID RWY10L

INKU1T

Nav. Spec.	WPT Name	Latitude (N)/ Longitude (W)	Path Term	Fly-By Fly-over	True track / Mag track	Distance (NM)	Upper limit / Lower limit (ft)	Speed Limit (kts)	Remarks
RNAV1	-	-	CA	-	095.3 / 097	-	- / +A750	-	-
RNAV1	DW990	533314.9 / 0060701.7	DF	Fly-By	-	-	A4000 / A4000	-	Turn L
RNAV1	LEMTA	534334.3 / 0060311.6	TF	Fly-By	012.4 / 015	10.6	-	-	-
RNAV1	DODIG	535746.0 / 0062934.0	TF	Fly-By	312.5 / 315	21.1	-	-	Turn L
RNAV1	INKUR	533551.3 / 0072328.6	TF	Fly-By	235.9 / 238	38.8	- FL160 / -	-	Turn L

NEVRI 1T CAT A/B SID RWY10L

NEVR1T

Nav. Spec.	WPT Name	Latitude (N)/ Longitude (W)	Path Term	Fly-By Fly-over	True track / Mag track	Distance (NM)	Upper limit / Lower limit (ft)	Speed Limit (kts)	Remarks
RNAV1	-	-	CA	-	095.3 / 097	-	- / +A750	-	-
RNAV1	DW990	533314.9 / 0060701.7	DF	Fly-By	-	-	A4000 / A4000	-	Turn L
RNAV1	LEMTA	534334.3 / 0060311.6	TF	Fly-By	012.4 / 015	10.6	-	-	-
RNAV1	NEVRI	540406.0 / 0061611.4	TF	Fly-By	339.6 / 342	22.0	- FL230 / -	-	Turn L

ROTEV 1T CAT A/B SID RWY10L

ROTE1T

Nav. Spec.	WPT Name	Latitude (N)/ Longitude (W)	Path Term	Fly-By Fly-over	True track / Mag track	Distance (NM)	Upper limit / Lower limit (ft)	Speed Limit (kts)	Remarks
RNAV1	-	-	CA	-	095.3 / 097	-	- / +A750	-	-
RNAV1	DW990	533314.9 / 0060701.7	DF	Fly-By	-	-	A4000 / A4000	-	Turn L
RNAV1	LEMTA	534334.3 / 0060311.6	TF	Fly-By	012.4 / 015	10.6	-	-	-
RNAV1	ROTEV	540143.7 / 0060358.4	TF	Fly-By	358.6 / 001	18.2	- FL230 / -	-	Turn L

SUROX 1T CAT A/B SID RWY10L

SURO1T

Nav. Spec.	WPT Name	Latitude (N)/ Longitude (W)	Path Term	Fly-By Fly-over	True track / Mag track	Distance (NM)	Upper limit / Lower limit (ft)	Speed Limit (kts)	Remarks
RNAV1	-	-	CA	-	095.3 / 097	-	- / +A750	-	-
RNAV1	DW990	533314.9 / 0060701.7	DF	Fly-By	-	-	A4000 / A4000	-	Turn L
RNAV1	LEMTA	534334.3 / 0060311.6	TF	Fly-By	012.4 / 015	10.6	-	-	-
RNAV1	DODIG	535746.0 / 0062934.0	TF	Fly-By	312.5 / 315	21.1	-	-	Turn L
RNAV1	SUROX	535948.0 / 0065936.5	TF	Fly-By	276.8 / 279	17.9	- FL160 / -	-	Turn L