

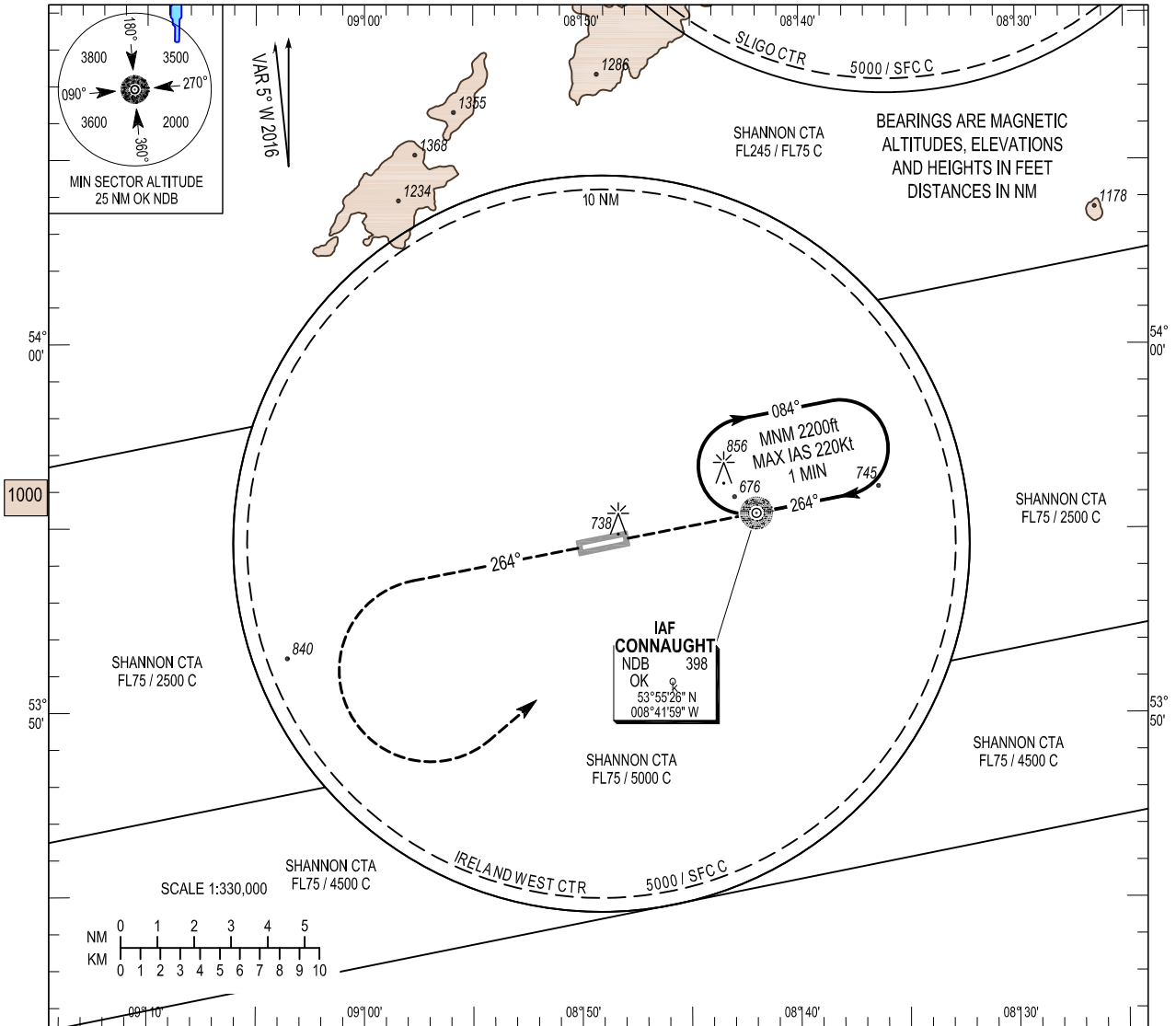
INSTRUMENT APPROACH CHART - ICAO

AERODROME ELEV 665 ft
 HEIGHTS RELATED TO THR RWY 26 - ELEV 665 ft

TWR	130.7
GND	130.7, 121.9
Emerg	121.5

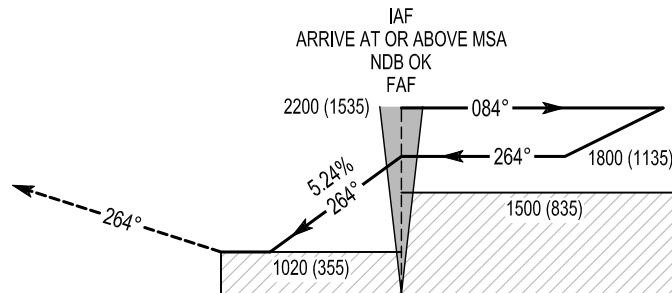
CONSULT NOTAM FOR LATEST INFORMATION

IRELAND WEST/KNOCK NDB RWY 26
 (ACFT CAT A, B, C, D)



MISSED APPROACH:
 At the MAPt, Climb on track 264° to 3000ft, turning left continuing climb to 4000ft to enter the OK hold or as instructed by ATC

TRANSITION ALTITUDE 5000 ft



ELEV 665 ft (THR RWY 26)

NM FROM THR RWY 26

5	4	3	2	1	0	1	2	3	4	5	6	7	8	9	10	11	12	13
---	---	---	---	---	---	---	---	---	---	---	---	---	---	---	----	----	----	----

Change: General Revision.

Chart created by ASAP s.r.o.

OCA (H)	A	B	C	D	Time FAF to MAPt 3.67NM	Min:Sec	3:09	2:27	2:12	1:50	1:34	1:23
STRAIGHT-IN APPROACH	1020 (355)				Ground speed	Kts	70	90	100	120	140	160
VISUAL MANOEUVRING (These heights are AAL)	1060 (395)	1160 (495)	1260 (595)	1360 (695)	Descent Rate 5.24%, (3°), 318 ft/NM	ft / min	370	480	530	640	740	850

RWY 26 NDB Approach

Descent Angle:	3.00°	
Fix	IAF OK	FAF OK
Fix Coordinates	535526.2N 0084159.3W	535526.2N 0084159.3W
Fix Formation Bearing °T	-	-
Fix Formation Distances	-	-

Holding Identification EIKN AD 2.24-13

<i>Holding Fix</i>	<i>Latitude (N) / Longitude (W)</i>	<i>Inbound True Track °T</i>	<i>Inbound Magnetic Track °M</i>	<i>Maximum Indicated Airspeed (kts)</i>	<i>Minimum /Maximum Holding Level / Altitude (FL/ft)</i>	<i>Distance outbound (NM)</i>	<i>Direction of Turn</i>
NDB OK	535526.2 / 0084159.3	258.9	264	220	3000ft/FL80	6.1	R