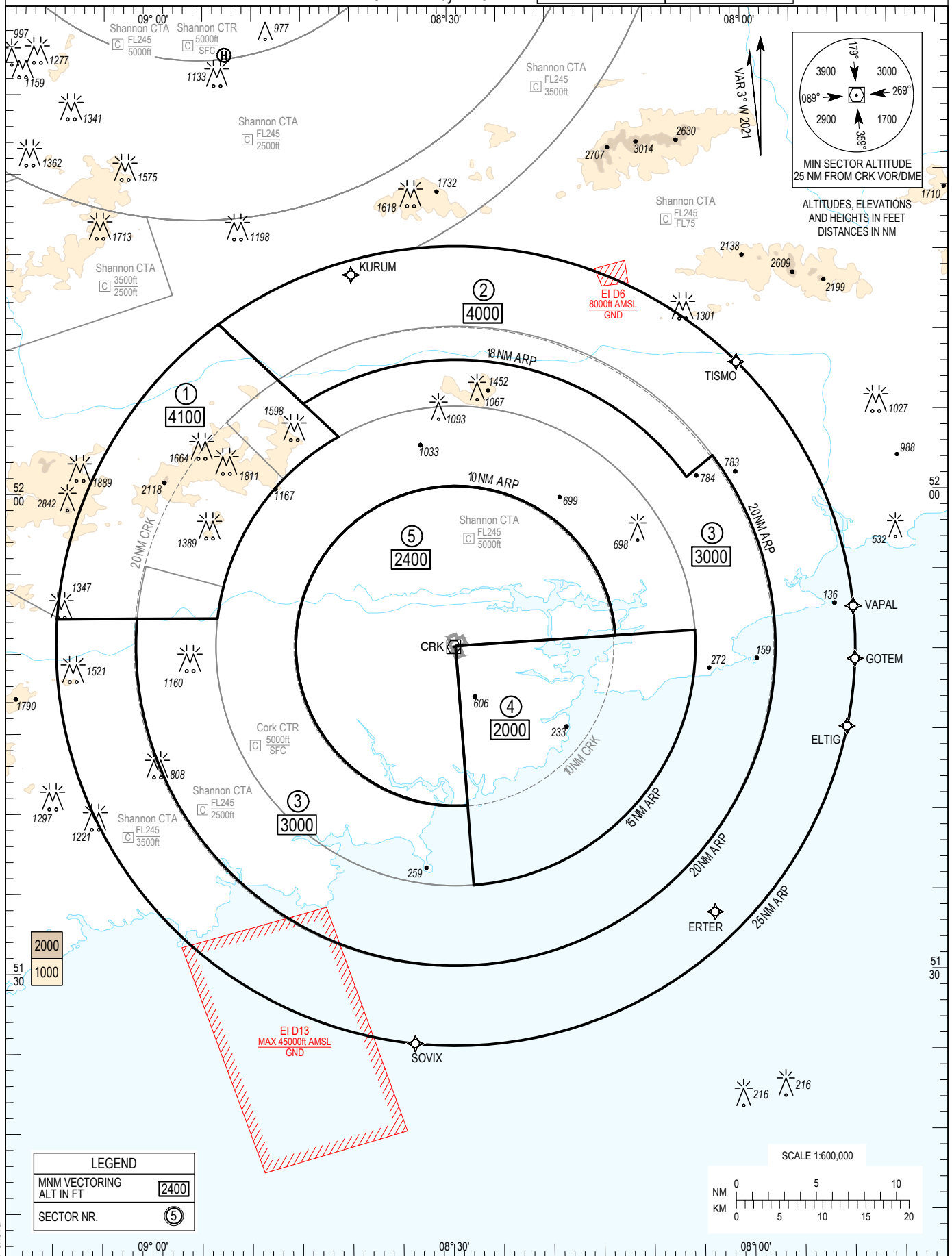


ATC SURVEILLANCE MINIMUM
ALTITUDE CHART - ICAO

AERODROME ELEV 502ft
TRANS ALT 5000ft
TRANS LEVEL by ATC

Cork TWR	119.300	APP RADAR	118.800
Cork GND	121.850		
Cork ATIS	120.925		
Cork APP	119.900		

CORK / CORK



INFORMATION BOX:
 1. ALTITUDE TEMPERATURE CORRECTION to -5°C taken into account in determining minimums. 2. MAX IAS 250KT below FL100. 3. COMMUNICATION FAILURE: In accordance with EICK AD 2.22 FLIGHT PROCEDURES Paragraph 3.2. 4. Chart only to be used for cross checking of altitudes assigned while under vectoring control.

CHANGE: New chart.

ATC Surveillance Minimum Altitude Coordinates

Sector 1. MNM ALT 4100

52°10'39"N 008°53'21"W,
arc anti-clockwise 25 NM radius centre 51°50'29"N 008°29'28"W,
51°52'13"N 009°09'42"W, 51°52'16"N 008°53'30"W
arc 15 NM radius centre 51°50'29"N 008°29'28"W,
52°03'36"N 008°41'11"W, 52°10'39"N 008°53'21"W

Sector 2. MNM ALT 4000

52°05'40"N 008°44'45"W,
arc 17.9 NM radius centre 51°50'29"N 008°29'28"W,
52°00'56"N 008°05'59"W, 52°02'15"N 008°03'20"W,
arc 20 NM radius centre 51°50'29"N 008°29'28"W,
51°52'15"N 009°01'37"W, 51°52'13"N 009°09'42"W,
arc anti-clockwise 25 NM radius centre 51°50'29"N 008°29'28"W,
52°10'39"N 008°53'21"W, 52°05'40"N 008°44'45"W

Sector 3. MNM ALT 3000

52°03'36"N 008°41'11"W,
arc anti-clockwise 15 NM radius centre 51°50'29"N 008°29'28"W,
51°52'16"N 008°53'30"W, 51°52'15"N 009°01'37"W,
arc anti-clockwise 20 NM radius centre 51°50'29"N 008°29'28"W,
52°02'15"N 008°03'20"W, 52°00'56"N 008°05'59"W,
arc anti-clockwise 17.9 NM radius centre 51°50'29"N 008°29'28"W,
52°05'40"N 008°44'45"W, 52°03'36"N 008°41'11"W

51°40'31"N 008°28'21"W, 51°35'32"N 008°27'48"W,
arc anti-clockwise 15 NM radius centre 51°50'29"N 008°29'28"W,
51°51'21"N 008°05'19"W, 51°51'04"N 008°13'22"W,
arc anti-clockwise 10 NM radius centre 51°50'29"N 008°29'28"W,
51°40'31"N 008°28'21"W

Sector 4. MNM ALT 2000

51°51'21"N 008°05'19"W,
arc 15 NM radius centre 51°50'29"N 008°29'28"W,
51°35'32"N 008°27'48"W, 51°50'29"N 008°29'28"W,
51°51'21"N 008°05'19"W

Sector 5. MNM ALT 2400

51°40'31"N 008°28'21"W,
arc anti-clockwise 10 NM radius centre 51°50'29"N 008°29'28"W,
51°51'04"N 008°13'22"W, 51°50'29"N 008°29'28"W.
51°40'31"N 008°28'21"W