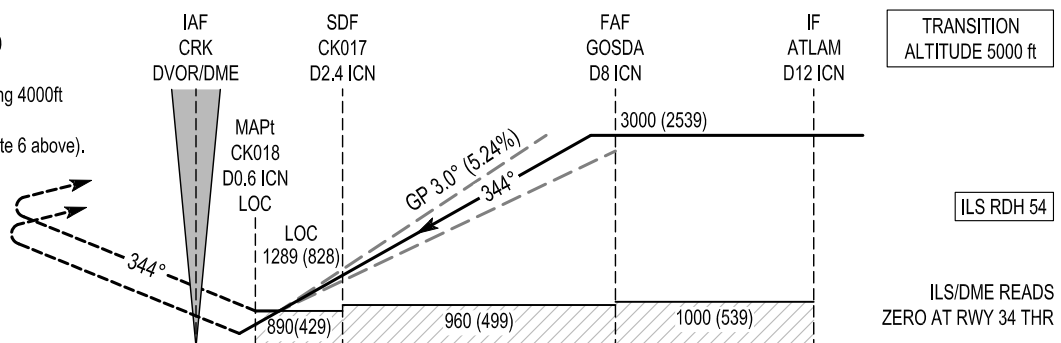


MISSED APPROACH:
Climb straight ahead to CK030 climbing to 4000ft. Turn right to CRK DVOR/DME maintaining 4000ft to initiate another approach or as directed by ATC (See note 6 above).



OCA (H)		A	B	C	D	Recommended Profile on Final Approach for LOC									
STRAIGHT - IN APPROACH	CAT I	618 (157)	628 (167)	639 (178)	652 (191)	ICN DME	7	6	5	4	3	2	1		
	LOC	890 (429)				ALT (HT)	2750 (2289)	2430 (1969)	2110 (1649)	1790 (1329)	1475 (1014)	1155 (694)	835 (374)		
VISUAL MANOEUVRING (These heights are AAL)		960 (458)	1000 (498)	1100 (598)	1200 (698)	Descent Rate 5.24%, (3°), 318 ft/NM				Kts	80	100	120	140	160
										ft / min	425	530	640	745	850

11 OCT 2018

RWY 34 ILS Approach

Fix	IF ATLAM	FAF GOSDA	MATP CK030	IAF CRK
Fix Coordinates	513840.8N 0082231.3W	514228.0N 0082444.6W	515827.0N 0083411.9W	515026.2N 0082939.4W
Fix Formation Bearing °T	159.87 ICN	159.87 ICN	340.71 CRK	
Fix Formation Distances	12.00 ICN	7.96 ICN	8.50 CRK	

RWY 34 LOC Approach

Descent Angle:	3.00°					
Fix	IF ATLAM	FAF GOSDA	SDF CK017	MAPt CK018	MATP CK030	IAF CRK
Fix Coordinates	513840.8N 0082231.3W	514228.0N 0082444.6W	514740.5N 0082748.7W	514920.4N 0082847.7W	515827.0N 0083411.9W	515026.2N 0082939.4W
Fix Formation Bearing °T	159.87 ICN	159.87 ICN	159.87 ICN	159.87 ICN	340.71 CRK	
Fix Formation Distances	12.00 ICN	7.96 ICN	2.41 ICN	0.6 ICN	8.50 CRK	

Holding Identification - EICK AD 2.24-22

<i>Holding Fix</i>	<i>Latitude (N) / Longitude (W)</i>	<i>Inbound True Track (degrees)</i>	<i>Inbound Magnetic Track (degrees)</i>	<i>Maximum Indicated Airspeed (kts)</i>	<i>Minimum/Maximum Holding Level / Altitude (FL/ft)</i>	<i>Limiting outbound distance (NM)</i>	<i>Direction of Turn</i>
GOSDA	514228.0N / 0082444.6W	340.0	344	220	3000ft / FL080	D13 ICN	L